



Ray Haradin
Specialist in Early Toys, Banks and Soldiers

CATALOG 58

It has been a wonderful and exciting year. In preparation for our Winter Catalog, we have searched the world for the most delightful and eye-catching toys ever produced. Representing all the great manufacturing countries of the world, we have assembled a toy store like no other. Peruse the pages, wonder and amazement will ensue.



TM

RAY HARADIN
Toys of Yesteryear
1039 Lakemont Drive
Pittsburgh, PA 15243-1817
(412) 343-8733
Fax: (412) 344-5273
email: raytoys@aol.com
raytoys.com




Ray Haradin
412-343-8733
FAX 412-344-5273
raytoys@aol.com

Consultant
Leon Weiss
917-991-7352
leonweiss@me.com

Bre Day
412-841-0623
bremarieday@gmail.com

Consultant
Steven Weiss
212-729-0011
sweiss57@me.com



Doorstops

Large Pirate Door Stop

Eastern Specialty Company | Excellent Condition
American - Circa 1920's | \$1650 (1)
12¼" Tall



British Redcoat Soldier Door Stop

Possibly Albany Foundry | Pristine Condition
American - Circa 1920 | \$975 (2)
10¾" Tall



Pirate Girl Door Stop

American - Circa 1930 | Pristine Condition
13½" Tall | \$2200 (3)



Flapper Girl Door Stop

E. G. Mfg. Company | Excellent Condition
Toledo, Ohio - 1920's | \$1250 (4)
12" Tall



Harlequin Door Stop

Made by Hubley Mfg. | Excellent Plus
Lancaster, PA - 1930's | \$1350 (5)
8" Tall



Flapper Girl Door Stop

E. G. Mfg. Company | Excellent Condition
Toledo, Ohio - 1920's | \$1450 (6)
11½" Tall



**Back View of John Quincy Adams
Saltbox Home and Outbuildings**

Copyright by James MacGregor | Excellent Condition
Braintree, MA - 1910's - 10" Long | \$3250 (8)
No Other Known Specimen



Edgar Allen Poe House

By Bradley and Hubbard
Meriden, Ct - 1920 - 8" Long
Pristine Condition - \$1450 (7)



Cottage Door Stop

By Eastern Specialty Company
American - 1920's - 8" Long
Pristine Condition - \$875 (9)



Windmill Door Stop

Made by Greenblatt Studios | Near Mint
Boston, MA -1926 | Condition
11¾" Tall | \$1150 (11)



**Lighthouse and Keeper's Cottage
A Rare Rubber Wedge Door Stop**

American - Circa 1920 - 10" Tall
Excellent Condition - \$875 (10)



Highland Lighthouse on Cape Cod

By Eastern Specialty Company
American - 1920's - 7¾" Tall
Excellent Condition - \$1450 (12)



Figural Cast Iron

Doberman Pinscher Door Stop

Made by Hubley Mfg. Company
Lancaster, Pa. - Circa 1930's

Near Mint Condition	\$1250 (13)

Canine Paperweights

By Hubley Mfg. Company
All Virtually Mint Condition

Cocker Spaniel - \$245	\$245 (14)
Barking Hound Dog - \$275	
Wire Haired Terrier - \$245	

Seated Bloodhound Door Stop

American - Circa 1930's

Pristine Condition	\$1075 (15)



Mammy Paperweights

By Hubley Mfg. Company
Lancaster, Pa. - Circa 1930's

All Virtually Mint Condition	\$285 For Each (16)

Popeye, Olive Oyl and Wimpy

Cast Iron Figural Paperweights
Made By the Hubley Mfg. Co.
Lancaster, Pa. - Circa 1940

Near Mint Condition	\$1250 (17)



Indian Chief Iron Charger

By Bradley & Hubbard Co.
Meriden, Ct. - Circa 1895

Pristine Condition	\$2250 (18)
13" Diameter	

Woman in Canoe Door Stop

American - Circa 1920

Excellent Condition	\$875 (19)

Indian Chief Iron Charger

By Bradley & Hubbard Co.
Meriden, Ct. - Circa 1895

Pristine Condition	\$2250 (20)
13" Diameter	



Minute Man Bank

Made by Hubley Mfg. | Near Mint
Lancaster, Pa. - 1917 | \$1450 (21)



Andy Gump Still Bank

Made By Arcade Mfg. Company | Pristine Condition
Freeport, IL - 1930 | \$1150 (22)
4 1/4" Tall



Indian with Tomahawk

Made by Hubley Mfg. | Pristine Condition
Lancaster, Pa. - 1920's | \$725 (23)



Policeman Figural Safe Bank

Made by James Harper
Chicago - 1907 - 5 1/2"
Excellent Condition
\$5250 (24)

**General Butler Bank
Satirized as a Frog**

By J. & E. Stevens Co.
Cromwell, Ct. - Ca. 1890
Excellent Condition
\$4500 (25)



"Give Me A Penny"

(Twistpin Version) | Excellent Paint
Wing Manufacturing | \$650 (26)
Chicago, IL - 1890's



Baseball Player

Deluxe Polychrome | Excellent Condition
Made by A. C. Williams | \$1450 (27)
Ravenna, Ohio - 1910's



Mammy Still Bank

Made by Hubley Toys | Mint with Original Box
Lancaster, PA - 1930's | \$495 (28)
5 1/4" Tall



Still Banks

Medium Crown Bank

J. & E. Stevens Company | Pristine Condition
Cromwell, CT - Circa 1895 | \$1375 (29)
3½" Tall



Green Pagoda Bank

English - Ca. 1895 | Pristine Condition
5" Tall | \$1250 (30)



Medium Cupola Bank

J. & E. Stevens Company | Pristine Condition
Cromwell, CT - Circa 1890 | \$1375 (31)
4¼" Tall



Skyscraper with Clock

By A. C. Williams Company | Excellent Condition
Ravenna, OH - Ca. 1910 | \$925 (32)
5¾" Tall



Set of Four Skyscraper Banks

Made by A. C. Williams Company | Near Mint Condition
Ravenna, OH - Circa 1920's | \$1450 (33)



Triangular Building with Clock

Made by Hubley Mfg. Company | Excellent Condition
Lancaster, PA - Ca. 1914 | \$975 (34)
6" Tall



Large Cupola Bank Finished in Patriotic Colors

J. & E. Stevens Company | Pristine Condition
Cromwell, CT - Ca. 1890 | \$1650 (35)
5½" Tall



Oriental Camel Bank

Unknown Manufacturer | Excellent Condition
American - Ca. 1890 | \$1950 (36)
4¾" Long



Large Cupola Bank Very Unusual Pumpkin Color

J. & E. Stevens Company | Excellent Condition
Cromwell, Ct. - Ca. 1890 | \$1175 (37)
5½" Tall



Painted State Bank

Made by Kyser & Rex
Philadelphia - 1890
5¾" Tall

Excellent
Condition
\$1500 (38)



Home Savings Bank

By J. & E. Stevens Company
Cromwell, CT - 1890's
6" Tall

Pristine
Condition
\$750 (39)



Large Painted Cupola Bank

By J. & E. Stevens Company
Cromwell, CT - 1880's
5½" Tall

Pristine
Condition
\$775 (40)



Globe Savings Fund Bank

Made by Kyser & Rex
Philadelphia - 1890's - 7" Tall

Excellent Condition
\$3500 (41)



Bird on Church Roof Bank

Designed by Elisha Stevens
By the J. & E. Stevens Company
Cromwell, CT - Circa 1878
6½" Tall

Excellent Condition
\$4850 (42)



**Medium Painted Cupola Bank
Outstanding Stencilled Roof**

By J. & E. Stevens Company
Cromwell, CT - 1880's
4¼" Tall

Pristine
Condition
\$950 (43)



Deluxe Painted Mosque Bank

By A. C. Williams Company
Ravenna, Ohio - 1920's
4" Tall

Excellent
Condition
\$375 (45)



Tower Bank

Made by Kyser & Rex
Philadelphia - 1890's - 7" Tall

Pristine Condition
\$1650 (44)

Cast Iron Bell Toys



Daisy Bell Toy

Gong Bell Mfg. Co.
East Hampton, Ct. - Circa 1890
Excellent Plus Condition
\$4200 (46)



Ding Dong Bell Toy

By Gong Bell Mfg. Co.
East Hampton, Ct. - Circa 1890
Excellent Condition - 9" Long
\$2850 (47)



Trick Pony Bell Toy

By Gong Bell Mfg. Co.
East Hampton, Ct. - Circa 1895
Pristine Condition - 7 $\frac{3}{4}$ " Long
\$3450 (48)

Eagle Bell Toy

By Gong Bell Mfg. Co.
East Hampton, Ct. - Circa 1890's

Near Mint Condition
\$3950 (49)



Eagle Bell Toy with Unusual Foliate Base

By Gong Bell Mfg. Co.
East Hampton, Ct. - Circa 1890's

Near Mint Condition
\$4850 (50)



Bruno & Bob Bell Toy

By Gong Bell Mfg. Co.
East Hampton, Ct. - Ca. 1900
Excellent Condition
\$2850 (51)



Waddler Bell Toy

By Gong Bell Mfg. Co.
East Hampton, Ct. - Circa 1890's
Excellent Condition - \$3250 (52)



Clown Riding Pig Bell Toy

By Gong Bell Mfg. Co.
East Hampton, Ct. - Ca. 1890's
Pristine Condition - \$1450 (53)



Cast Iron Toys



**Finch on Holly Branch
Whimsical Clucking Toy**
Made by J. & E. Stevens Co.
Cromwell, Ct. - Circa 1880's
Ex - Donal Markey Collection
Pristine Condition (lacks lower beak)
\$4500 (54)



Fishing Boy Pull Toy
By the J. & E. Stevens Co.
Cromwell, Ct. - Circa 1890
Excellent Condition
\$4800 (55)



"Just Out" Cap Gun
By Ives, Blakeslee & Co.
Bridgeport, Cr. - Circa 1890
Pristine Condition (Hairline)
\$3250 (56)



Young America Bell Toy
Unknown Manufacturer
American - Circa 1876
Near Mint - \$5500 (57)

**Monkey Riding Tricycle Bell Toy
Very Rare Deluxe Painted Version**

By the J. & E. Stevens Company
Cromwell, Ct - Circa 1895 - 8" Long
Pristine Condition - \$7500 [\(58\)](#)



Unusual Monkey Platform Toy

Attributed to Ives, Blakeslee or to
Judd Manufacturing Company
American - Circa 1890 - 7¼" Long
Ex - Bertoia Collection
Mint Condition - \$11,500 [\(59\)](#)

Cast Iron Automotive

Art Deco Buick Sedan Yellow Cab Still Bank

By Arcade Mfg. Company
Freeport, IL - 1928 - 8" Long
Excellent Condition
\$2950 (60)



Yellow Cab Co. Taxi

By Arcade Mfg. Company
Freeport, IL - 1928 - 9" Long
Near Mint Condition
\$2750 (61)



Art Deco Buick Sedan With Rubber Whitewall Tires

By Arcade Mfg. Company
Freeport, IL - 1932 - 8" Long
Excellent Plus
\$3450 (62)



Military Ambulance

By Kenton Mfg. Co. | Mint Unused Condition
Ohio - Circa 1925 | \$2850 (63)
5½" Long



**Double Decker Bus
Five Window Version**

By Kenton Mfg. Co. | Pristine Condition
Ohio - Circa 1932 | \$2250 (64)
6½" Long



**Double Decker Bus
Ten Window Version**

By Kenton Mfg. Co. | Mint Condition
Ohio - Circa 1932 | \$6750 (65)
11¾" Long



**Double Decker Bus
Eight Window Version**

By Kenton Mfg. Co. | Pristine Condition
Ohio - Circa 1932 | \$2850 (66)
9½" Long



Double Decker Bus

By Kenton Mfg. Co. | Pristine Condition
Ohio - Circa 1925 | \$3450 (67)
8¾" Long



Double Decker Bus

By Kenton Mfg. Co. | Near Mint Condition
Ohio - Circa 1925 | \$2850 (68)
6¼" Long



Cast Iron Automotive

Automotive Pumper

By Kenton Mfg. Company
Ohio - Circa 1935 - 15" Long

Excellent Condition
\$2850 (69)



Webaco Fuel Oil Truck

By Arcade Mfg. Company
Freeport, IL - Circa 1928
13' Long

Very Fine
Condition
\$3250 (70)



Automotive Hook and Ladder

By Kenton Mfg. Company
Ohio - Circa 1935 - 22" Long

Pristine Condition
\$3250 (71)



Chauffeured Touring Car

Made by A.C. Williams Company
Ravenna, OH - Circa 1918 - 11½" long

Pristine Condition
\$3250 (72)



Yellow Taxi

Arcade Mfg Company
Freeport, IL - Circa 1940's
8¼" Long

Mint Condition
\$2450 (73)



Rare Reo Coupe with Rumble Seat

By Arcade Mfg. Company
Freeport, IL - Circa 1928
9" Long

Includes Original Arcade Decal
Pristine Condition
\$5250 (74)



Green Fishtail Racecar

Hubley Toys - Lancaster, PA
Circa 1933 - 8¾" Long
Includes Original Decal
Excellent Condition - \$2850 (75)



Silver Fishtail Racecar

Hubley Toys - Lancaster, PA
Circa 1935 - 10½" Long
Excellent Condition - \$3250 (76)

Man Riding Ornate Tricycle

Jules Faivre Company
French - Circa 1895 - 13" Tall
Rich Garthoeffner Collection
Near Mint Condition
\$18,500 (77)



Three Bicycle Racers

Made by Ideal Mfg. Co.
Pennsylvania - Late 1890's
Ex - Bill Bertoia Collection
Pristine Condition - 9 1/2" Long
\$16,500 (78)



Scarce Bunnies Chariot

The Ideal Toy Company
 Connecticut - 1890 - 9 1/4"
 Donal Markey Collection
 Near Mint Condition
 \$14,500 (79)

Why is a Roman Chariot being drawn by and driven by rabbits? There's no logical explanation for this bizarre imagery, nevertheless, it makes for a very charming child's toy.



Articulated Walking Horse

Made by Ives, Blakeslee & Company
 Bridgeport, Ct. - 1880's - 9" x 9 1/4"
 Excellent Plus Condition
 \$4800 (80)

Here we find a very sublime example of Ives' classic walking horse. Many years ago, Barney Barenholtz brought my attention to the toy's minimalist profile. As a toy manufacturer himself, he often mused about the nature of timeless design. And for Barney, this toy was an excellent illustration of these qualities, observing that the toy not only resembled the reduced simplicity one finds in Etruscan sculpture but also in the modernists like Marino Marini.



Cast Iron Horse Drawn



Hansom Cab

By Welker & Crosby
Brooklyn, NY - 1890
13" Long
Pristine Condition
\$4250 [\(81\)](#)

Fancy Landau Carriage

Made by Shimer Toys
Pennsylvania - 1890's
5" Long
Provenance: Weiss Family Collection
Pristine Condition - \$4850 [\(82\)](#)



Back-to-Back Trap

Made by Kenton Toys
Ohio - 1890's
13½" Long
Excellent Condition
\$4500 [\(83\)](#)

Steep Back Open Phaeton

Made by Kenton Toys
Ohio - 1890's - 13" Long
Excellent Condition - \$3850 [\(84\)](#)





Spider Phaeton Carriage
Made By Kenton Toys
Ohio - 1890's - 13½" Long
Pristine Condition - \$4850 (85)



Commercial Buckboard
Made by the Harris Toy Company
Toledo, Ohio - 1890's - 14¼" Long
Pristine Condition - \$2750 (86)



Doctors Open Buckboard
Made by the Harris Toy Company
Toledo, Ohio - 1890's - 13¼" Long
Pristine Condition - \$2750 (87)



Fancy Open Phaeton
Made by Hubley Toys
Lancaster, PA - 1900 - 17" Long
Pristine Condition - \$4250 (88)

Cast Iron Horse Drawn

Depot Wagon

Made by Carpenter Toys
New York - Early 1880's
Excellent Condition - 12" Long
\$1850 (89)



Tally Ho Stagecoach

Made by Pratt & Letchworth
Buffalo, NY - Circa 1890
From the Weiss Family Collection
Excellent Condition - 27" Long
\$42,500 (90)



When Carpenter Toys went out of business in the late 1880's, William Pryor Letchworth renewed the patents and bought the casting molds for several of their most noteworthy toys, including their iconic Tally Ho. The P & L version of this toy was identical to Carpenters in all respects save one. For the body of the coach, P & L chose to highlight the window and door details in color. There are only four extant specimens of this rare toy.

Two Seat Brake

Made by Hubley Toys
Lancaster, Pa. - Circa 1900
Very Good Paint - 17" Long
Toy retains four original figures
\$8500 (91)

No children's toy evokes a nostalgic sense of travel in the late nineteenth century better than the various sizes of toy Brakes. Just looking at them, one wonders what it must have felt like to cross America's relatively uncharted network of unpaved roads to get from one place to another. Undoubtedly, it must have been a dirty and dusty experience.



Consolidated Street Trolley Car

Made by Wilkins Toy Works | Very Good Condition
Keene, NH - Circa 1890's | 13" Long
\$1650 (92)



Puritan Paddlewheel Steamboat

Made by Wilkins Toy Works | Near Mint Condition
Keene, NH - Circa 1890's | 10 1/2" Long
\$3250 (93)



Fire Chief's Vehicle

By Dent Hardware Co. | Mint Condition
Fullerton, Pa. - Circa 1912 | 11" Long
Gertrude Hegarty Collection | \$4500 (94)



World's Fair Car Line Trolley
Chicago 1893 Exposition

Made by Wilkins Toy Works | Pristine Condition -18 1/2" Long
Keene, NH - Circa 1893 | \$4800 (95)



Cast Iron Horse Drawn

Fire Patrol Vehicle

Made by Dent Hardware Co. | Pristine Condition - 18" long
Fullerton, Pa. - Circa 1912 | \$4250 (96)



Three Horse Water Tower Scarce Miniature Scale

Made by Dent Hardware Co. | Near Mint Condition - 22" Long
Fullerton, Pa. - Circa 1912 | \$5500 (97)
Gertrude Hegarty Collection



Three Horse Medium Hose Reel

Made by Dent Hardware Co. | Near Mint Condition - 17½" Long
Fullerton, Pa. - Circa 1912 | \$7500 (98)
Gertrude Hegarty Collection



Coal Wagon with Coal Chute

By Dent Hardware
Fullerton, Pa. - Ca. 1910 - 15½" Long
Gertrude Hegarty Collection

Mint Condition
\$5250 (99)



Two Horse Hose Reel

By Dent Hardware
Fullerton, Pa. - Ca. 1910 - 19" Long
Gertrude Hegarty Collection

Mint Condition
\$9500 (100)



Two Horse Transfer Wagon

Made by Dent Hardware Co.
Fullerton, Pa. - Circa 1910

Pristine Condition - 20" Long
\$3500 (101)



Cast Iron Horse Drawn

Rare Combination Fire Vehicle

Made by Pratt & Letchworth | Pristine Condition - 18" Long
Buffalo, NY - Circa 1890 | \$13,500 (102)
Ex - Bill Bertoia Collection



This extraordinary fire toy is perhaps the most elusive toy fire vehicle in the hobby. At most, there are only 5 or 6 extant specimens. This is a particularly fine example as it still retains the original figures and ladders.

Fire Patrol Vehicle

Made by Pratt & Letchworth | Pristine Condition - 17" Long
Buffalo, NY - Circa 1890 | \$7500 (103)



This highly unusual toy incorporates design elements taken from Carpenter Toys, notably the ratchet articulating wheel set at the horse's rear feet. Pratt & Letchworth had bought out Carpenter in the late 1880's. Miraculously, the toy retains all four original figures.

Chemical Combination Fire Vehicle

By the Ives, Blakeslee and Company | Pristine Condition
Bridgeport, Ct - Circa 1890 | 21" Long
Gertrude Hegarty Collection | \$16,500 (104)



The Burning Building

By F. W. Carpenter and Co. | Excellent Condition
 Harrison, NY Circa 1890 | \$45,000 (105)
 Ex - Hegarty Toy Collection | (Also refer to full condition report)



Carpenter's iconic child's toy depicting a building ablaze with ladies in distress is undeniably the most fascinating and appealing toy created in the late nineteenth century. Carpenter offered this product in three different formats. This specimen represents the deluxe expanded two story version complete with two climbing fireman on ladders, a pivoting hose man on the ground and two helpless female victims that require rescuing.

To operate the toy, start by pulling the cord attached to the ladder on the right. Watch as the brave fireman rushes up the rungs of the ladder. When he reaches the roof, where one lady waits nervously, his hand tips a tray that causes her to roll down into the elevator shaft on the left. The weight of this figure going downwards causes the second fireman to ascend his ladder and rescue the woman on the balcony where flames are about to engulf her. When the lady from the roof rolls out the side of the building, the second fireman and the lady from the balcony now safely descend. Simultaneous to all of this frenetic action, the fireman with the hose on the ground pivots from the right to the left side of the building. That this toy even works is an absolute miracle that defies engineering design.

Cast Iron Horse Drawn

Oversized Hose Reel

Dent Hardware Company
Fullerton, PA - 1912 - 24" Long
Near Mint Condition
\$12,500 [\(106\)](#)



Two Horse Flying Artillery

Ives, Blakeslee and Company
Bridgeport, Ct. - Circa 1890
Donal Markey Collection

Pristine Condition
23" Long
\$8500 [\(107\)](#)



Oversized Fire Pumper

Dent Hardware Company
Fullerton, PA - 1912 - 24" Long
Near Mint Condition
\$12,500 [\(108\)](#)



Three Horse Hose Reel

By Dent Hardware Co. | Pristine Condition
Fullerton, Pa. - Circa 1912 | 22" Long
\$6250 (109)



Two Horse Fire Pumper with Deluxe Burnished Copper Highlights

Made by the Dent Hardware Co. | Near Mint Condition
Fullerton, Pa. - Circa 1912 | 22" Long
Gertrude Hegarty Collection | \$7250 (110)



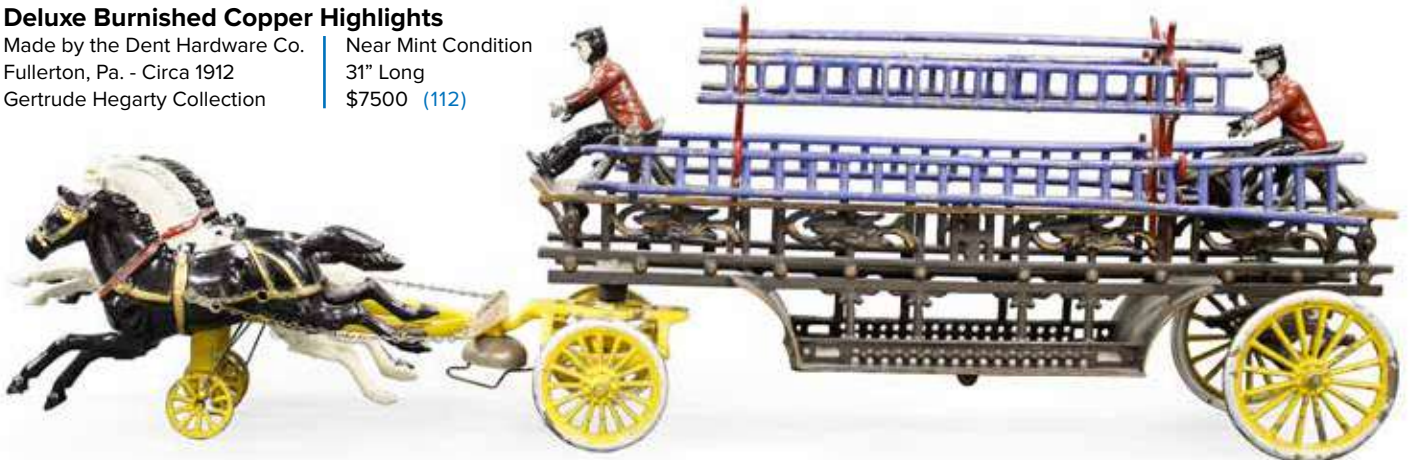
Two Horse Water Tower

By the Dent Hardware Co. | Near Mint Condition
Fullerton, Pa. - Circa 1912 | 30" Long
Gertrude Hegarty Collection | \$7500 (111)



Three Horse Hook and Ladder with Deluxe Burnished Copper Highlights

Made by the Dent Hardware Co. | Near Mint Condition
Fullerton, Pa. - Circa 1912 | 31" Long
Gertrude Hegarty Collection | \$7500 (112)



Mechanical Banks

Miniature Organ Bank

Monkey in Blue Tunic

Made by Kyser & Rex Co.
Philadelphia, Pa. - Circa 1880's

Near Mint
Condition
\$3850 (113)



Medium Organ Bank

Made by Kyser & Rex Co.
Philadelphia, Pa. - Circa 1880's

Excellent
Condition
\$2200 (114)



Miniature Organ Bank

Monkey in Yellow Tunic

Made by Kyser & Rex Co.
Philadelphia, Pa. - Circa 1880's

Pristine
Condition
\$2850 (115)



Organ Bank - Cat & Dog

Made by Kyser & Rex Co.
Philadelphia, Pa. - 1880's

Excellent
Condition
\$2850 (116)



Outstanding Tabby Bank

Rare All Japanned Finish with
Very Extraordinary Highlights
Unknown Manufacturer - 1880's

Near Mint
Condition
\$9500 (117)



Organ Bank - Boy & Girl

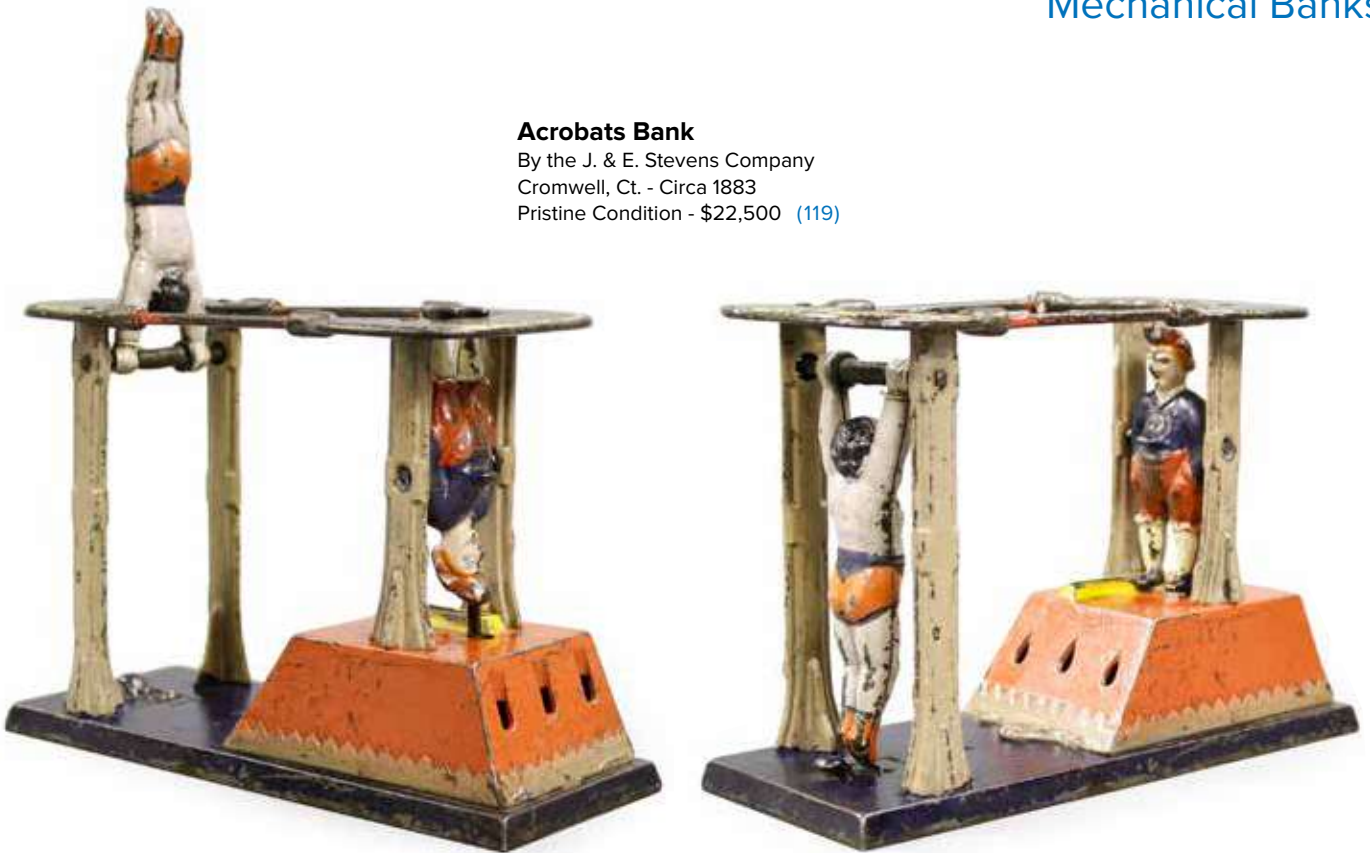
Made by Kyser & Rex Co.
Philadelphia, Pa. - 1880's

Excellent
Condition
\$3750 (118)



Acrobats Bank

By the J. & E. Stevens Company
Cromwell, Ct. - Circa 1883
Pristine Condition - \$22,500 (119)



Merry-Go-Round Bank

Made by Kyser & Rex Co.
Philadelphia, Pa. - Circa 1880's
Very Good Condition - \$28,500 (120)
Restoration to Base & Baseplate



Mechanical Banks

Owl Turns Head Bank Gray-Brown Variant

By the J. & E. Stevens Company
Cromwell, Ct. - Circa 1880's
Pristine Condition
\$2500 (121)



Owl Turns Head Bank Rare Snow White Color

By the J. & E. Stevens Company
Cromwell, Ct. - Circa 1890
Pristine Condition
\$12,500 (122)



Owl Turns Head Bank Yellow-Brown Variant

By the J. & E. Stevens Company
Cromwell, Ct. - Circa 1880's
Near Mint Condition
\$3250 (123)



White Hen and Chicks Bank

Designed by Charles Bailey
By the J. & E. Stevens Company
Cromwell, Ct. - Circa 1901
Pristine Condition
\$16,500 (124)



Frog on Lattice Scarce White Base

By J. & E. Stevens Co.
Cromwell, Ct. - 1870's
Excellent Condition
\$3800 (125)



Rooster Bank

By Kyser & Rex Company
Philadelphia, Pa. - Circa 1885
Pristine Condition
\$2950 (126)





Boy Robbing the Bird's Nest

By the J. & E. Stevens Company
Cromwell, Ct. - Circa 1906
Near Mint Condition
\$28,500 (127)

This bank, perhaps better than any other, exemplifies how mechanical banks are able to convey a sense of narrative purely based upon their design. An inquisitive boy has come upon a bird's nest ensconced in the low-lying branch of a tree. Curious, he tosses his hat on the ground and shimmies up some berry-laden vines and begins to edge his way out on the branch. At the same time, Papa and Mama bird are returning to defend their unborn young. A catastrophe ensues. To operate the bank, place the tree limb in the upright position and rest a coin in the aperture at the base of the tree. When the silver lever on the left is pushed down, the tree limb appears to break, knocking the coin into the bank.

**Eagle and Eaglets Bank
Beige Grass with Strong Highlights**

By the J. & E. Stevens Company
Cromwell, Ct. - Circa 1883
Near Mint with the Original Box
Functioning Bellows
\$8500 (128)

To accentuate it's patriotic theme, the Stevens Company marketed this bank as the Eagle Bank. It depicts a very sensitive and poignant narrative of a mother both feeding and protecting her young. Place a penny in her beak and press the snake-shaped lever found behind her tail. She leans forward to drop your coin into the nest. At the same time, her babies rise to meet her with opening beaks. An internally set bellows is also engaged that makes a faint chirping noise. This is a truly exceptional specimen of this bank.



Mechanical Banks

Boys Stealing Watermelons Figures with Solid Outfits

Made by Kyser and Rex Co.
Philadelphia, Pa. - Circa 1890
Provenance: Ed Mosler Collection
Pristine Condition
\$8500 (129)



Butting Buffalo Bank with Rare Original Racoon

Made by Kyser & Rex Co.
Philadelphia, Pa. - Circa 1888
Excellent Condition
\$16,500 (130)

Uncle Remus Bank

Made by Kyser & Rex Co.
Philadelphia, Pa. - Circa 1890
Excellent Condition
\$12,500 (131)



Organ Grinder and Performing Bear

Made by the Kyser & Rex Company | Pristine Condition
Philadelphia, Pa. - Circa 1891 | \$12,500 (132)



Punch and Judy Bank

By Shepard Hardware | Pristine Condition
Buffalo, NY - Circa 1890's | \$8500 (133)



Monkey Bank

By Hubley Mfg. Co. | Mint Condition
Lancaster, Pa. - Ca. 1930 | \$3250 (134)



Trick Dog Bank

By Hubley Mfg. Co. | Near Mint Condition
Lancaster, Pa. - Ca. 1935 | \$1500 (135)



Trick Dog Bank White Clown Variation

By Hubley Mfg. Co. | Pristine Condition
Lancaster, Pa. - Ca. 1930 | \$4500 (136)



Mechanical Banks

Hall's Excelsior Bank Rare Light Tan Color

By J. & E. Stevens Co.
Cromwell, Ct. - Ca. 1875
Pristine Condition
\$2850 (137)



New Bank - Blue Cupola

Attributed to J. & E. Stevens
Cromwell, Ct. - Circa 1875
Illustrated in Morphy Book
Near Mint Condition
\$10,500 (138)



Hall's Excelsior Bank Unusual Cerulean Blue

By J. & E. Stevens Co.
Cromwell, Ct. - Ca. 1880
Excellent Condition
\$1650 (139)



Green Cabin Bank

By J. & E. Stevens Co.
Cromwell, Ct. - Ca. 1890
Pristine Condition
\$1750 (140)



Yellow Cabin Bank

By J. & E. Stevens Co.
Cromwell, Ct. - Ca. 1890
Pristine Condition
\$2950 (142)



Yellow Novelty Bank

By J. & E. Stevens Co.
Cromwell, Ct. - Ca. 1880
Pristine Condition
\$2950 (141)



Cat and Mouse Bank

By J. & E. Stevens Co.
Cromwell, Ct. - 1890's
Pristine Condition
\$8750 (143)



**Speaking Dog Bank
Scarce Blue Dress**

By J. & E. Stevens Co.
Cromwell, Ct. - Ca. 1895
Pristine Condition
\$8500 (144)



Reclining Chinaman Bank

By J. & E. Stevens Company
Cromwell, Ct. - Mid 1880's
Pristine Plus Condition
\$19,500 (145)



A man invites us to play a hand of poker with him. At first glance, this bank appears very pretty and relatively innocuous. However, something far more insidious is genuinely afoot. On close inspection, one discovers disturbing symbolism that portrays the Chinese as having deplorable character marked by shiftiness and duplicity. This irrational belief system was commonly referred to in the press as “Yellow Peril”. Such ill-founded racist fears tragically illustrate American society’s inability to allow diverse foreign social groups easy assimilation into the fabric of it’s culture.

The Chinaman is presented in an odd recumbent position as if he is relaxing in an opium den. To emphasize his aura of “otherness” (i.e. not one of us), he is shown dressed as a coolie and his hair is pulled into a long braided queue that reaches his hips. A penny placed in his jacket pocket disappears when you press the activating lever. At the same time, he lowers his right hand to reveal four aces and he flips his left hand up to his chin. He mocks us and smirks at us because he knows that he has tricked us and “pocketed” our money. He pulls aces from up his sleeve every time because he slyly cheats at cards. This nefarious depiction of the Chinese reinforces the harmful notion that they are schemers who are not trustworthy. Another indication of their supposed criminal sociopathy is the inclusion of the rat beneath his legs.

Mechanical Banks

Automatic Coin Savings Bank "Drop a Coin - Tells Your Fortune"

Scarce Variant with Wall Hanger
Unknown American Manufacturer
Provenance: F. H. Griffith Collection
Near Mint Condition
\$5500 (146)



Bunker Hill Monument Bank • Zig Zag Semi-Mechanical •

Unknown Manufacturer
USA - Circa 1880's - 16" Tall
Excellent Condition
\$8500 (147)



Ten Cent Adding Bank

Designed by Isaac Pforzheimer
Unknown American Manufacturer
Patented August 20th, 1889
Pristine Condition
\$3750 (148)



Magician Bank

By J. & E. Stevens
Cromwell, Ct. - 1900
Excellent Condition
\$7500 (149)



Lighthouse and Keeper's Cottage Rare Ebony Finish to Cottage

Unknown American Manufacturer
First seen advertised in 1891
Pristine Condition
\$9500 (150)



Guessing Bank - Male Figure Also used as a Gambling Device

"Pays Five for One if You Call the Number"
Patented by E. McLoughlin - May 1877
Pristine Condition
\$10,500 (151)

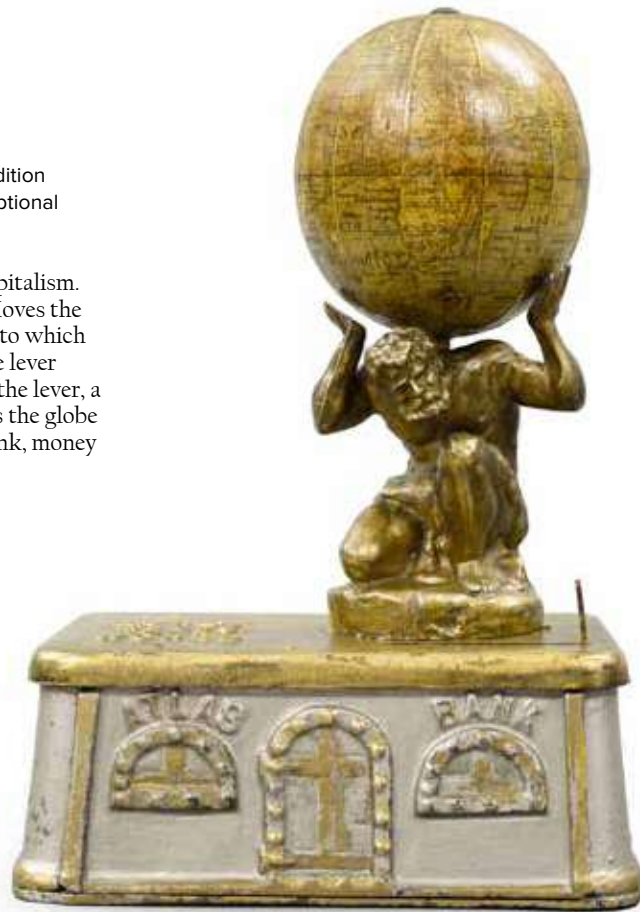


Atlas Bank

Unknown Manufacturer
American - Circa 1895

Paint is Pristine Condition
Paper Globe is Exceptional
\$16,500 (152)

The Atlas Bank is the ultimate expression of capitalism. On the top-plate, we read the slogan “Money Moves the World”. At first glance, we cannot find a slot into which we can deposit the coins. However, pushing the lever leftwards reveals the coin slot. Upon release of the lever, a powerful spring is engaged that feverishly spins the globe on Atlas’ back. Thus, in the case of the Atlas Bank, money literally moves the world.



Shoot the Chute Bank

Original by J. & E. Stevens Company
Boxed 2nd Casting By Mark Haber
Connecticut - Circa 1940's (153)

Near Mint Condition
\$13,500

Buster Brown and Tige take a sled ride down a steep incline. This represents a sensational 1940's copy made from the original factory mold by pioneering toy bank hobbyist Mark Haber. In modern times, bank collectors refer to these early copies as desirable “collectible forgeries”. A boxed period specimen in pristine condition might run as much as \$95,000.



Mechanical Banks

Two Frogs Bank

By J. & E. Stevens Co.
Cromwell, Ct. - Ca. 1880's

Pristine Condition
\$7500 (154)



Zoo Bank

By Kyser & Rex
Philadelphia - Ca. 1880's

Excellent Condition
\$3750 (155)



Frog on Rock Bank a.k.a. "Jug-O-Rum"

Made by Kilgore Mfg.
Westerville, Ohio - Ca. 1930

Mint Condition
\$5800 (156)



Santa at Chimney Bank

By Shepard Hardware
Buffalo, NY - Ca. 1890

Excellent Condition
\$3300 (157)



Chief Big Moon Bank

By J. & E. Stevens Co.
Cromwell, Ct. - Ca. 1899

Pristine Condition
\$5250 (158)





Germania Exchange Bank

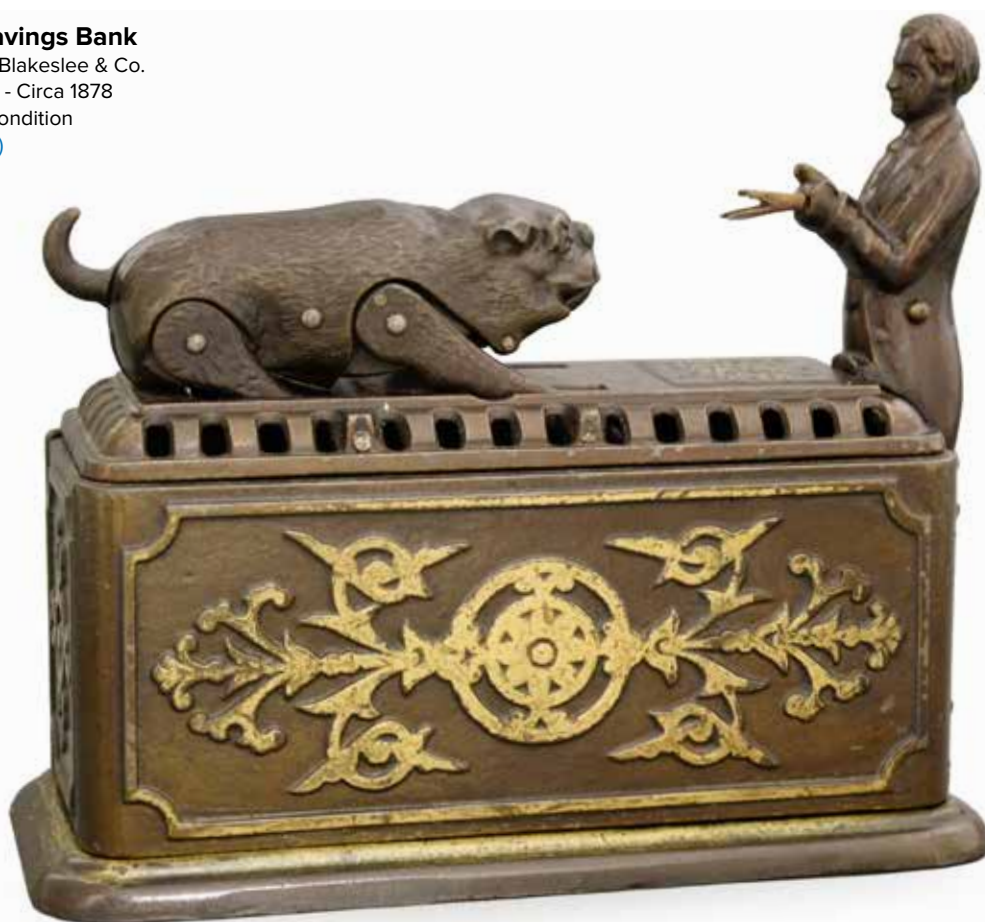
Attributed to J. & E. Stevens | Excellent Condition (New Trap)
Cromwell, Ct. - Circa 1884 | \$67,500 (159)

The Germania Exchange Bank is composed of tin, iron and lead elements. This unusual feature suggests the handiwork of top bank designer Charles Bailey. His long-standing affiliation with the Stevens Company would also suggest that they manufactured the bank. The rather esoteric imagery of this amusing goat clutching a beer stein with his front hooves is both puzzling and charming. However, German beer producers often used the goat as a mascot in the marketing campaign for their beverages, especially Bock Beer. In any case, the Germania Exchange has long been valued as one of the rarest and most engagingly dynamic banks ever produced.

Mechanical Banks

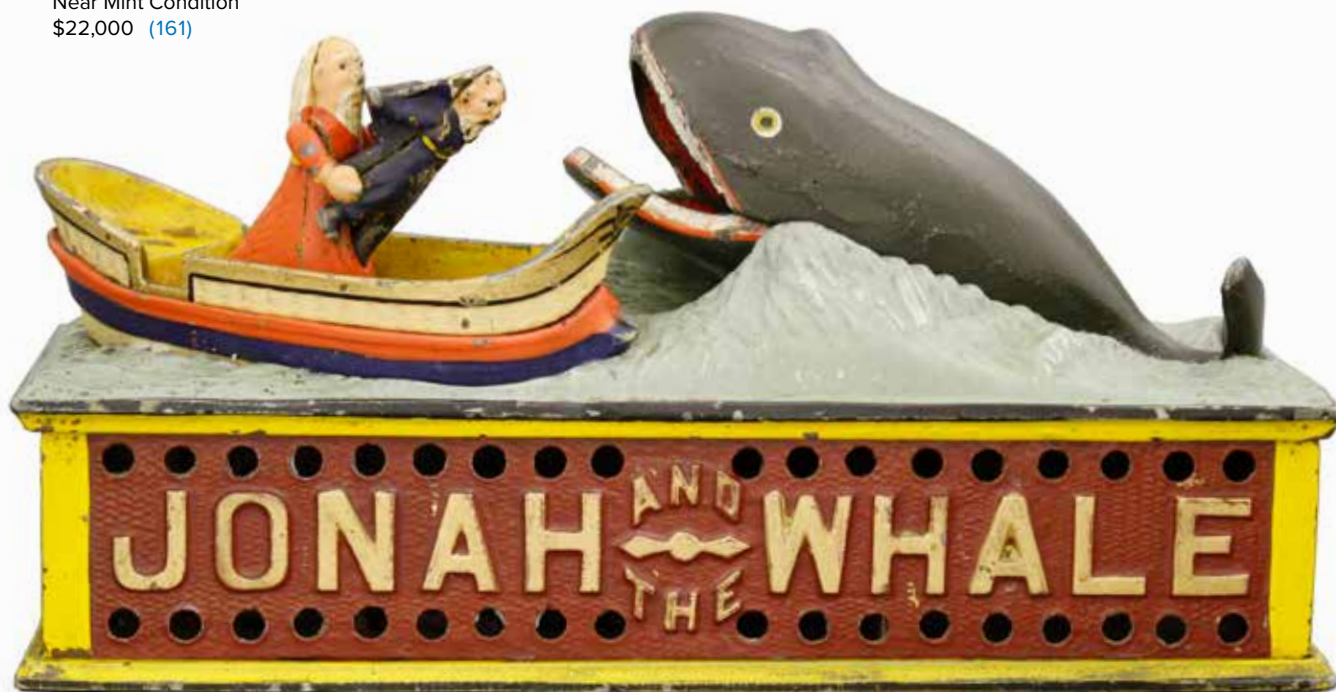
Bull Dog Savings Bank

Made by Ives, Blakeslee & Co.
Bridgeport, Ct. - Circa 1878
Pristine Plus Condition
\$16,500 (160)



Jonah and the Whale Bank

Made by Shepard Hardware
Buffalo, NY - Circa 1890
Near Mint Condition
\$22,000 (161)





Speaking Dog Bank
Made by Shepard Hardware
Buffalo, NY - Circa 1890
Near Mint with the Box
\$16,500 (162)

**Chief Big Moon Bank
a.k.a. Indian Camp Bank**
Made by J. & E. Stevens
Cromwell, Ct. - Circa 1897
Near Mint with the Box
\$18,500 (163)



Mechanical Banks

Teddy and the Bear (Scarce Gray Tree)

By the J. & E. Stevens Co.
Cromwell, Ct. - Ca. 1905
Provenance: Seaman's Savings
Mint Condition (Hairline)
\$12,500 (164)



Tammany Bank - Hall's Patent Black Coat and Gray Pants

By the J. & E. Stevens Company
Cromwell, Ct. - Circa 1875
Pristine Plus Condition
\$2500 (165)



Motor Bank

By Kyser & Rex Co.
Philadelphia - 1890
Some Paint Restoration
and Trap Replaced
\$14,500 (166)



Tammany Bank Rare Blue Jacket

By the J. & E. Stevens Co.
Cromwell, Ct. - Circa 1890
Near Mint Condition
\$3850 (167)



Lion Hunter Bank

By J. & E. Stevens Co.
Cromwell, Ct. - Ca. 1911
Pristine Condition
\$18,500 (168)

After Teddy Roosevelt left the office of the presidency in 1909, he went on an extended safari in Africa and toured Europe for several months. Ever since his youth, an adoring fan base clamored for news of Teddy's heroic exploits. The Lion Hunter demonstrates that Teddy was absolutely fearless. He stares down the barrel of his rifle to look directly into the eyes of a ferocious lion. For his admirers, it didn't matter whether such stories were true or not. To the contrary, they provided the folklore upon which his reputation for courage is based.



Bavarian Marksman Bank with a Feather in His Cap

Made by J. & E. Stevens Co.
Cromwell, Ct. - Circa 1890's
Excellent Plus Condition
\$14,500 (169)



This variation of the marksman bank commonly known as the Grenadier Bank is extremely scarce and desirable. Possibly, the Stevens Company produced this unusual variant for souvenir sale to European participants in the internationally renowned rifle competition staged at the Creedmore estate on eastern Long Island. Such speculative thoughts are further borne out by the fact that nearly all examples of this bank have been found in Europe. In any case, please note Stevens' modifications for the figure's cap with feather. Additionally, the detailing found in the tree bark and the grass is far more intricate.

Mechanical Banks

Lehmann "TIT - BITS" Bank With German Portrait Images

Made by Ernst Paul Lehmann Co.
Brandenburg, Germany - Circa 1889
Pristine Condition
\$10,500 (170)



The "TIT - BITS" Automatic Money-Box With Map Images of the British Empire

Made by Ernst Paul Lehmann Co.
Brandenburg, Germany - Circa 1889
Excellent Condition
\$5500 (171)



Lehmann "TIT - BITS" Bank With English Portrait Images

Made by Ernst Paul Lehmann Co.
Brandenburg, Germany - Circa 1889
Very Good Condition
\$4500 (172)



Mickey Mouse Bank "Right Hand Pointing"

Made by Saalheimer & Strauss
Germany - Circa Mid 1930's
Excellent Condition
\$10,500 (173)



Cross Legged Minstrel Bank

Attributed to J. Levy Company
Probably Manufactured by the
Saalheimer and Strauss Company
Nuremberg, Germany - Circa 1925
Provenance - Hegarty Collection
Near Mint Condition
\$3250 (174)



Sentry in Guardhouse Advert for Lyon's Toffee

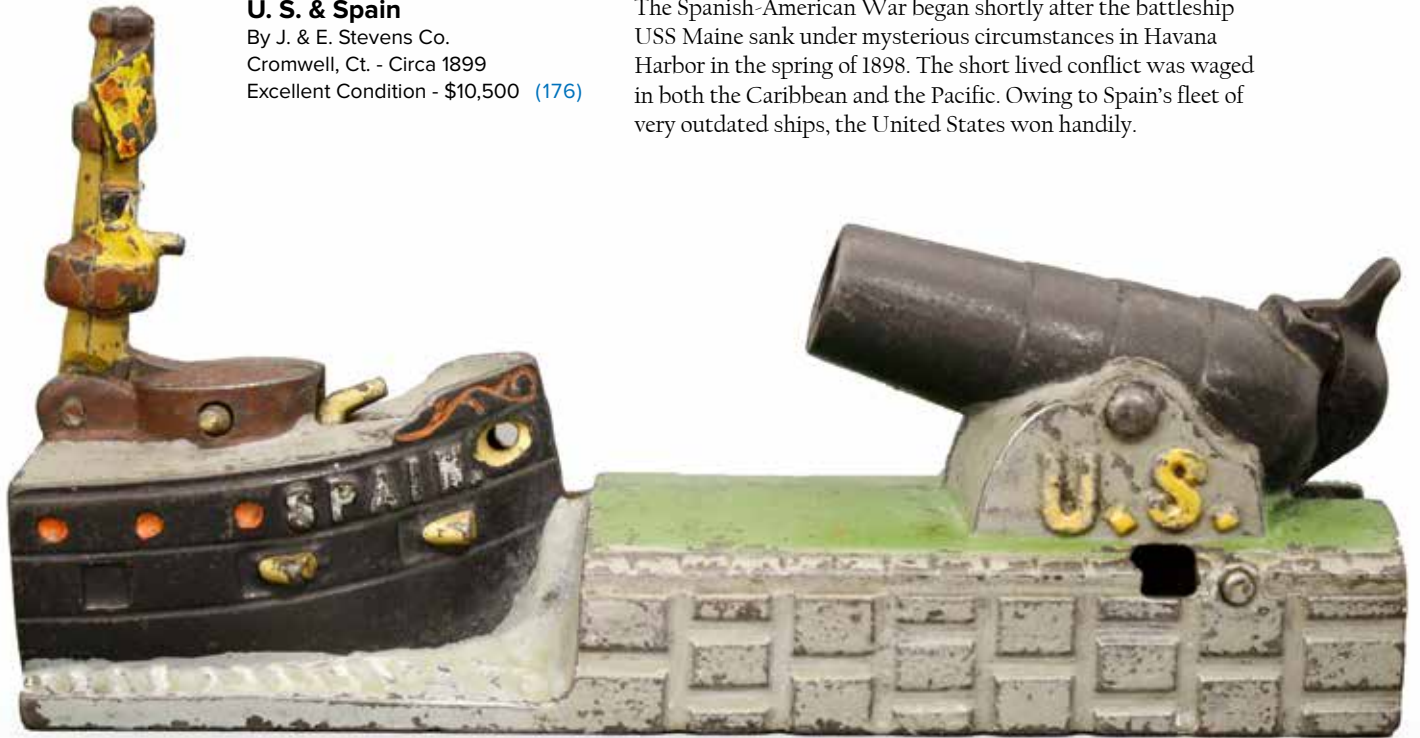
Made by Saalheimer & Strauss
Germany - Circa 1930's
Excellent Condition
\$1750 (175)



U. S. & Spain

By J. & E. Stevens Co.
Cromwell, Ct. - Circa 1899
Excellent Condition - \$10,500 (176)

The Spanish-American War began shortly after the battleship USS Maine sank under mysterious circumstances in Havana Harbor in the spring of 1898. The short lived conflict was waged in both the Caribbean and the Pacific. Owing to Spain's fleet of very outdated ships, the United States won handily.



Darktown Battery Bank

Made by J. & E. Stevens Co.
Cromwell, Ct. - Circa 1890's
Pristine Condition
\$6850 (177)

Mammy and Child Bank

Blue Dress Variant
By Kyser & Rex Co.
Philadelphia - Ca. 1890
Excellent Condition
\$9500 (178)



Mechanical Banks

Elephant Howdah- Pull Tail

Hubley Manufacturing Company | Pristine Condition
Lancaster, Pa. - Circa 1934 | \$1800 (179)



"LAND-ON Roosevelt - 1936"

Souvenir Given Away at the
Republican National Convention | Virtually Mint
Unknown American Maker | \$1500 (180)



Elephant with Howdah (Man Pops Up)

Enterprise Mfg. Co. | Pristine Condition
Philadelphia - 1880's | \$5250 (181)



Elephant with Three Stars

Unknown Manufacturer | Near Mint Condition
American - Circa 1880's | \$8750 (182)

Mechanical Banks

Clown on Globe Bank

By the J. & E. Stevens Co. | Pristine with Original Box
Cromwell, Ct. - Circa 1890 | \$9500 (183)



Early Trick Dog Bank

By Shepard Hardware | Excellent Condition
Buffalo, NY - 1880's | \$4500 (184)



Girl Skipping Rope Bank

By the J. & E. Stevens Co. | Restoration to Face & Apron
Cromwell, Ct. - Circa 1890's | Excellent Condition
\$24,500 (185)



Boy on Trapeze Bank

J. Barton Smith Company | Excellent Condition
Philadelphia, Pa. - Ca. 1890 | \$4250 (186)



Mechanical Banks

Indian with White Bear

J. & E. Stevens
Cromwell, Connecticut - Circa 1880
Excellent Condition
\$8500 (187)



New Bank- Rare Center Lever

J. & E. Stevens
Cromwell, Connecticut - Circa 1872
An exceedingly rare bank.
Excellent Condition
\$12500 (188)



Hall's Lilliput Bank

By J. & E. Stevens Co.
Cromwell, Ct. - 1880
Pristine Condition
\$4500 (189)



Magic Bank- Green

J. & E. Stevens
Cromwell, Connecticut - Circa 1876
Pristine Condition
\$9500 (190)



JN Bank with Moving Eyes- Small

Sydenham & McOustra
England - Circa 1935
With original box.
Pristine Condition
\$2200 (191)



"Gem" Registering Bank

J. & E. Stevens
Cromwell, Connecticut - Circa 1893
Retains original paper labels.
Pristine Condition
\$3500 (192)



**Women's Suffrage Bank
Papier Mache and Cardboard**

Germany - Dated Xmas 1913 | Pristine Condition - 9½" Tall
Perelman Museum Collection | \$14,500 (193)



Before the bank is operated, it appears to be merely an ordinary red English pillar-shaped mailbox. The mail slot says “Post Here - Penny Only”. It is further identified as being the mail for the Christmas of 1913. When a large English penny is slipped into the slot, the top of the mailbox explodes and a modern looking woman carrying a flag marked “Votes for Women” pops up. This very remarkable woman is an image of Emmeline Pankhurst, the founder and leader of the Women’s Social and Political Union (WSPU). She is cited as being the most visible, influential and militant advocate in the campaign for British suffrage. She was portrayed by Meryl Streep in the recent 2015 film, “Suffragette”.

**Hall's Empire Bank Prototype
Handmade Bronze & Iron Sample**

Patented by J. Hall - Sept. 8, 1874 | Excellent Condition - 6" Tall
Ex-Hegarty Bank Collection | \$55,000 (194)
Ex-Ed Mosler Bank Collection
Ex-Al Davidson Bank Collection

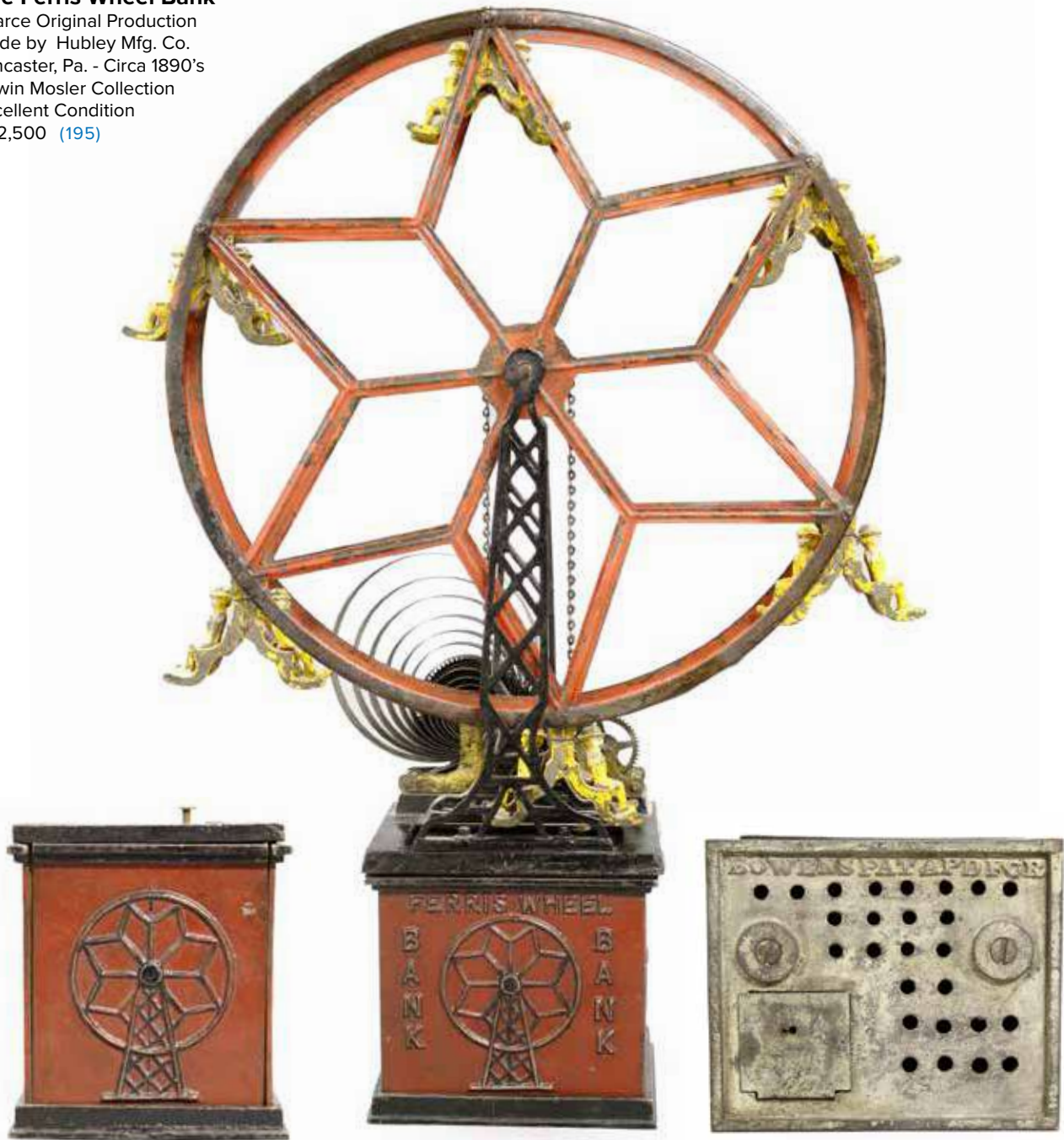


Though this elegant building bank was never brought to market, John Hall ultimately assigned his patent rights to the J. & E. Stevens Company, who re-designed the toy as a one story building known as the Lilliput Bank. Hall placed the bank teller figure on the balcony level, but he also noted that the figure could be on the lower floor as well. This rare mechanical bank artifact has been owned by several of the most illustrious hobbyists in the field. It presents a unique opportunity to acquire something extraordinarily rare for your collection.

Mechanical Banks

The Ferris Wheel Bank

Scarce Original Production
Made by Hubley Mfg. Co.
Lancaster, Pa. - Circa 1890's
Edwin Mosler Collection
Excellent Condition
\$22,500 (195)



Early collectors pondered whether the Ferris Wheel Bank had ever been produced. It's clear that these pioneers were aware of all the known patent documents and a line cut illustration from the period also existed. Yet, no specimens of this dynamic and impressively scaled bank had ever surfaced, at least not by 1940. That's when two overly zealous hobbyists from Philadelphia (Pendergast and Salafian) began to create their own version of the bank. In truth, their task was not too difficult.

The top of the bank is surmounted by a popular toy ferris wheel toy that Hubley actually produced in the mid 1890's. It was a replica of the great ferris wheel at the Columbian Exposition staged in Chicago in 1893 and 1894. As there was a relatively ample supply of the toy, the duo needed only to create the coin collecting base. They guesstimated the measurements of the bank's operating chassis by examining the scale of the base in relation to the wheel in all of the extant illustrations. Their guesswork very nearly nailed it. However, since the 1940's, two original period specimens have been discovered that demonstrate several significant differences in design, notably, the way in which coins are deposited and the side panels do not say Ferris Wheel Bank. Here is a great chance to add a genuinely rare bank to your collection.



Mechanical Stump Speaker

By Ives, Blakeslee & Company
Bridgeport, Ct. - Circa 1880
Mint with the Box
\$22,500 (196)



Mechanical Columbian Wheel

Made by Hubley Manufacturing
Lancaster, Pa. - Circa 1890's
Very Fine - 15" Wide x 17" Tall
\$4800 (197)

Hubley's toy replica of the ferris wheel at the Columbian Exposition staged in Chicago in 1893 was wildly appealing and popular. However, its prohibitive price tag of \$2.50 was so steep that few parents could afford to buy it for their kids.

American Clockwork Toys

General Butler Walking Figure

By the Ives, Blakeslee Company | Excellent Condition
 Bridgeport, Ct. - Circa 1880 | \$4800 (198)



Benjamin Butler was a General in the Union Army. He is infamously known for perpetrating many dastardly deeds.

Chloe - The Old Nursemaid

By the Ives, Blakeslee Company | Excellent Condition
 Bridgeport, Ct. - Circa 1890 | \$9500 (199)



This represents one of the most difficult and desirable pieces to add to one's collection of American Clockwork toys.

Santa Claus Walking Figure

By the Ives, Blakeslee Company | Excellent Condition
 Bridgeport, Ct. Circa 1880 | \$6500 (200)



Santa is rarely found complete with his original pack of toys and dolls still in place on his back.

Women's Rights Advocate Rare Blue Checkered Dress

By the Ives, Blakeslee Company | Excellent Condition
 Bridgeport, Ct. - Circa 1890 | \$7500 (201)



Hand Held Jigging Figure

Designed by Charles Hotchkiss | Excellent Condition
 Made by the Ives, Blakeslee Company | \$4250 (202)
 Bridgeport, Ct. - Circa 1880



Preacher in the Pulpit Rare Baptist Minister With Original Wooden Box

By the Ives, Blakeslee Company | Pristine Condition
 Bridgeport, Ct. - Circa 1890 | \$5250 (203)



American Clockwork Toys

Washerwoman on Green Base

By the Ives, Blakeslee Company
Bridgeport, Ct. - Circa 1880's
(Lacks Bottom Wood Panel)

Excellent
Condition
\$3850 (204)



Mammy Holding Her Baby Dinner Table Whisk Broom

American - Circa 1890's
Near Mint
Condition
\$1075 (205)



Washerwoman on Red Base

By the Ives, Blakeslee Company
Bridgeport, Ct. - Circa 1880's

Excellent
Condition
\$4500 (206)



Women's Rights Advocate On a Red Painted & Stenciled Base

By the Ives, Blakeslee Company
Bridgeport, Ct. - Circa Late 1870's

Pristine
Condition
\$9500 (207)



Black Couple Dancing on a Stage with a Red Curtain

Probably by Automatic Toy Works
Connecticut - Circa Mid 1870's

Very Good
Condition
\$6250 (208)



Preacher Sermonizing at His Pulpit On a Blue Painted & Stenciled Base

By the Ives, Blakeslee Company
Bridgeport, Ct - Circa 1875

Pristine
Condition
\$4750 (209)



American Clockwork Toys

Monkey Churning Butter

By the Ives, Blakeslee Company | Pristine Condition
Bridgeport, Ct. - Circa 1890 | \$12,500 (210)
Ex - Blair Whitton Collection
Ex - Tom Anderson Collection



Monkey Jigger on Tin Top

Made by Automatic Toy Works | Excellent Condition
Connecticut - Circa 1880's | \$3500 (211)



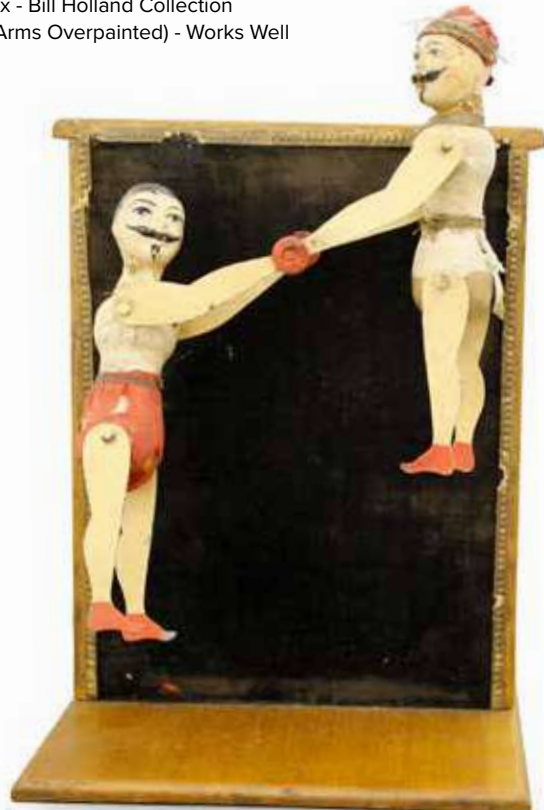
Clown with Bell Jigger

By the Ives, Blakeslee Company | Excellent Condition
Bridgeport, Ct. - Circa 1880's | \$4200 (212)
Ex - Barney Barenholtz Collection
Ex - Tom Anderson Collection



Rare Double Acrobats Toy

By the Ives, Blakeslee Company | Excellent Condition
Bridgeport, Ct. - Circa 1890 | \$5500 (213)
Ex - Bill Holland Collection
(Arms Overpainted) - Works Well





**Punch Riding a Fancy
Horse Head Velocipede**

Made by Ives, Blakeslee | Pristine Condition
Bridgeport, Ct. - Ca. 1875 | \$75,000 (214)

This amusing image of the irascible Mr. Punch presents us with one of the rarest American mechanical toys. In fact, at this time, there are no other extant specimens known. Punch can be easily identified by his long bony nose and by the hump on his back. When the toy is given a vigorous winding, Punch will be seen moving his arms quickly back and forth. This action makes it appear as if he is really driving the rear wheels of the velocipede.



The Heavy Swell

Ernest Paul Lehmann
Germany - Circa 1920
Near Mint Condition
\$5500 (215)

With very rare original key.



Girl on Mechanical Swing

Ives Blakeslee & Company
Bridgeport, Connecticut - Circa 1872
Pristine Condition
\$23,000 (216)

Very rare and desirable polychrome
example in its original box.



**“LIBERTY” Fire Pumper
Rare Clockwork Version**

By James Fallows Company | Professionally Restored
Philadelphia - Circa 1890 -17½” | \$14,500 (217)



“ATALANTA” Steam Yacht

By Ives, Blakeslee & Co. | (Minor restoration to reds)
Bridgeport, Ct. - Circa 1880's | Ex - Louis Hertz Collection
Excellent Condition - 18 " Long | \$22,500 (218)



There are only three extant specimens of this extraordinary American toy boat.

Fire Pumper with Dexter Horses

Made by Althof-Bergmann | Restored Condition - 22" Long
New York City - Circa 1880 | \$9500 (219)



American Clockwork Toys

Cuzner's Mechanical Trotter

By Ives, Blakeslee & Company | Pristine Condition - 11" long
Patented March 8, 1871 | Includes the Original Box
Ex - Barenholtz Collection | \$11,500 (220)
Ex - Tom Anderson Collection



"HUDSON" Mechanical Locomotive

Made by George Brown Company | Excellent Condition - 9½" Long
Forestville, Ct. - Circa 1865 | \$3850 (221)



Mechanical Monkey Bell Ringer

Made by Ives, Blakeslee & Co. | Pristine Condition - 9" Long
Bridgeport, Ct. - Circa 1880's | \$4250 (222)



Mechanical Boy in Gig

Made by Althof-Bergmann
New York City - Circa 1880
Pristine Condition
17" Long
\$9250 (223)



Waltzing Couples in Bandstand
A Super Scarce Mechanical Toy

By the George Brown Company
Forestville, Ct. - Circa 1875
(One of Only Two Known)
Very Good (Couples Restored)
\$15,000 [\(224\)](#)



American Tin Toys



Equestrian on Galloping Horse
Of Unusually Small Scale
Made by Althof-Bergmann
New York City - Circa 1875 - 3¼" Long
Ex -Barenholtz Collection
Pristine Condition
\$950 (225)

Pair of Rocking Equestrians
American Tin Novelty Toys
Made by James Fallows
Philadelphia - Circa 1890
Both in Excellent Condition
\$3250 for the pair (227)



Extraordinary Horse Platform Toy
Early and with Yellow Wheels
Made by Hull & Stafford Company
Clinton, Ct. - Circa 1865 - 6½" Long
Excellent Condition
\$1650 (226)



The Galloping Equestrian
Rare Articulated Platform Toy
By the Althof-Bergmann Company
New York City - Ca. 1875 - 10" Long
Outstanding Condition
\$7500 (228)



Rare & Unusual Platform Toy
Depicting Two Equestrians
Made by Althof-Bergmann Co.
New York City - Circa 1880's - 13" Long
Provenance - Hegarty Collection
Pristine Condition
\$10,500 (229)

Horse and Colt Platform Toy
on an Unusual Stained Base
Probably by Althof-Bergmann
New York City - Ca. 1875 - 9" Long
Outstanding Condition
\$5500 (230)



Monkey Pushing Hoop

American Tin Novelty Toy
Probably Althof-Bergmann
New York City - Circa 1875
Excellent Condition
4 1/4" Long
\$4500 (231)



Lion on Rocking Base American Tin Bell Toy

Made by Althof-Bergmann
New York City - Circa 1875
Excellent Condition
3 1/4" Long
(Bell wire re-soldered)
\$3250 (232)



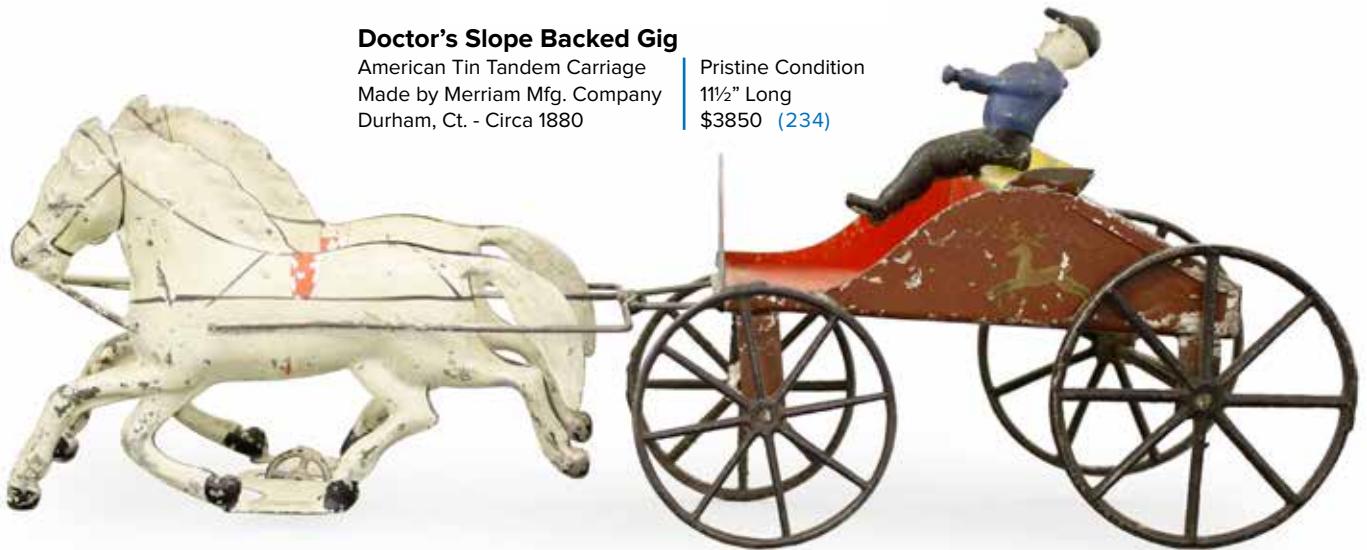
Bear Pushing Hoop

American Tin Bell Toy
Made by Althof-Bergmann
New York City - Circa 1880
Minor Restoration
4" Long
\$2500 (233)



Doctor's Slope Backed Gig

American Tin Tandem Carriage
Made by Merriam Mfg. Company
Durham, Ct. - Circa 1880
Pristine Condition
11 1/2" Long
\$3850 (234)



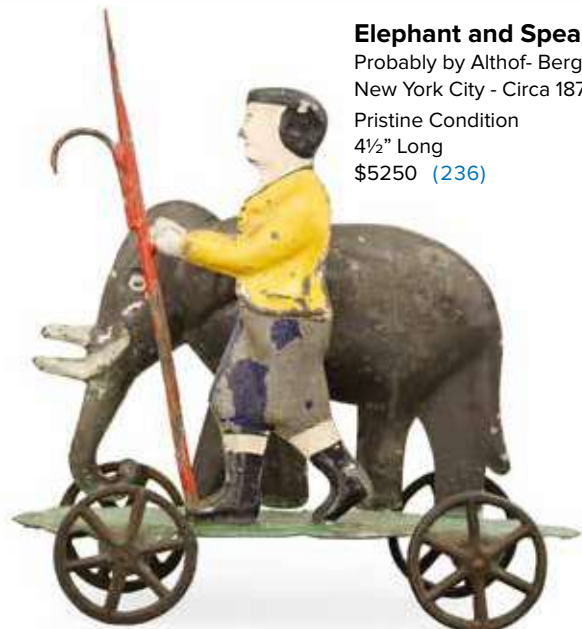
Spotted Dog Platform Toy

Probably by Hull & Stafford
Clinton, Ct. - Circa 1865
Excellent Paint - 4 1/2" Long
(re-soldered to Base)
\$850 (235)



Elephant and Spear Carrier

Probably by Althof-Bergmann
New York City - Circa 1875
Pristine Condition
4 1/2" Long
\$5250 (236)



American Tin Toys



Rare Dog Balance Toy On a Wheeled Base

Made by Althof-Bergmann
New York City - Circa 1880
Pristine Condition - 10" Tall
(Restoration to counterweight)
\$8250 (237)

Though mass produced, early American tin toys often resemble tiny folk art masterpieces because of their ethereal form and primitive silhouette. This kinetic balance toy is a perfect illustration of the pleasing effects of design minimalism.

Rare Patriotic Hoop Bell Toy

Made by Althof-Bergmann
New York City - Circa 1876
Ex - Barenholtz Collection
Excellent Condition - 7½" x 9½"
\$28,500 (238)

In the field of American tin toys, this elegant toy might be designated "as good as it gets". The simplistic design of the parade marcher pushing the hoop makes for a surprisingly strong composition. When it was first produced, the exterior of the hoop was painted red, white and blue in three even lengths. Good evidence of this still exists. Collectors rarely find a large fragile early tin toy in pristine unrestored condition like this beauty.





**Figures Striking Bells
Unusual Patriotic Bell Toy**

Probably by Althof-Bergmann
New York City - Circa 1875
Excellent Condition - 10 1/2" Long
\$27,500 (239)

Probably produced at the time of America's Centennial, patriotically dressed figures can be seen marching behind a white horse. They strike bells that sound different chimes. There are absolutely no other known examples of this most unusual toy.



**Large Peddler's Wagon
"American Toys & Fancy Goods"**

By the George Brown Company
Forestville, Ct. - Circa 1875
Pristine Condition - 19 1/2" Long
\$9500 (240)



American Tin Toys



Rare Horse and Trainer Articulated Platform Toy

Made by Althof-Bergmann
New York City - Circa 1880's
Excellent Condition - 9" Long
\$8800 (241)



Goat and Shepherd Bell Toy

Made by Althof-Bergmann
New York City - 1875
Excellent - 9¼" Long
\$7500 (242)



Canine Platform Toy with Articulated Swiveling Head

Made by Althof-Bergmann
New York City - Circa 1880's
Excellent Condition - 9" Long
\$5800 (243)

Man with Three Faces

Made by Jacob Distler
Germany - Circa 1920
Pristine Litho - 9¼"
\$4500 (244)



This bizarre figure, whose face changes from caucasian to black to asian, represents one of the most fascinating novelty toys ever created.

Rare Skating Bear

By Gebruder Bing
Germany - Circa 1920's
Pristine Condition - 9" Tall
\$2850 (245)



Acrobatic Bear on Wire

Possibly S. Guntermann
Germany - Circa 1920
Excellent - 12" Tall
\$1500 (246)



Self Walking Bear

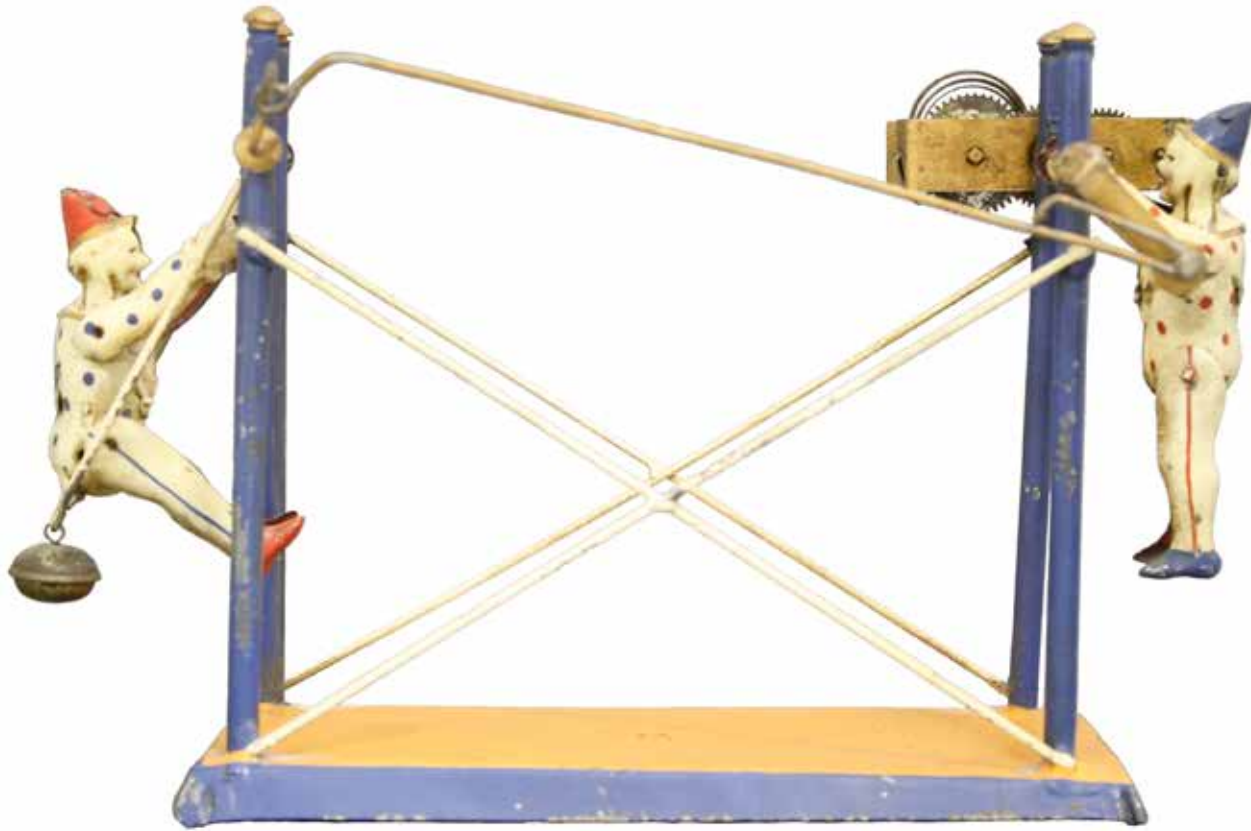
By Schuco Toys
Germany - 1930's
Excellent - 9¾"
\$1250 (247)



Novelty Toys

Two Acrobatic Clowns at Play Rare German Tin Novelty Toy

Attributed to Guntermann | Pristine Condition - 8" Long
Germany - Circa 1910 | \$3750 (248)



Dapper Dan - The Jigging Banker

Made by Louis Marx & Company | Mint with the Box - 10" Tall
New York City - Circa 1920 | \$4250 (249)
Ex - Donal Markey Collection



Popeye and Olive Oyl Jiggers

Made by Louis Marx & Company | Mint in the Box - 9 1/2" Long
New York City - Late 1930's | \$4250 (250)



Charlie Chaplin as the Tramp

Made by Schuco Toys
 Germany - Late 1920's
 6¼" Tall
 Excellent Condition
 \$950 (251)



Quacking Donald Duck

Made by Schuco Toys
 Germany - Late 1930's - 5½" Tall
 Pristine Condition
 \$1650 (252)



Bear on his Scooter

Made by Schuco Toys
 Germany - 1930's - 5¼" Tall
 Near Mint Condition
 \$1250 (253)



Drumming Pig Bank

Made by Schuco Toys
 Germany - Circa 1948
 4½" Tall
 Mint with Box & Key
 \$1500 (254)



Cosmopolitan Piggy Traveller

Made by Schuco Toys
 Germany - Circa 1948
 4½" Tall
 Mint with Box & Key
 \$950 (255)



Schuco Toys

Juggler Clown

Made by Schuco Toys
Germany - Circa 1950's
5" Tall

Pristine Condition
\$675 (256)



Santa Claus with Candle and Tree

Made by Schuco Toys
Germany - Circa 1930
5½" Tall

Excellent Condition
\$1650 (257)



Black Musician with Cymbals and Drum

Made by Schuco Toys
Germany - Circa 1948
4½" Tall

Near Mint Condition
\$495 (258)



Fascist Soldier Dancing with Josephine Baker

Made by Schuco Toys
Germany - Late 1930's
5" Tall

Excellent Condition
\$950 (259)



"Monkey Business" Novelty Lipstick

Made by Schuco Toys
Germany - Circa 1933

Mint Condition
\$750 (260)



This toy deploys a clever play on words for sexual activity as one finds two naked babies in the body of the monkey.

Bar Mitzvah Clown Boy Dancing with his Sister

Made by Schuco Toys
Germany - Circa 1930's
5" Tall

Excellent Condition
\$750 (261)



Dancing Bavarian Children

Made by Schuco Toys
Germany - Ca. 1930's
5" Tall

Near Mint Condition
\$475 (262)



Dancing Mouse Couple

Made by Schuco Toys
Germany - Circa 1940's
4¼" Tall

Mint Condition with Box
\$675 (263)



Dancing Aryan Youth

Made by Schuco Toys
Germany - 1930's
5" Tall

Excellent Condition
\$525 (264)





**The Three Little Pigs
Flautist • Drummer • Violinist**
Made by Schuco Toys
Germany - Late 1930's
All Near Mint - 4 1/2" Tall
\$2500 for the Set (265)

German Mother and Baby
Made by Schuco Toys
Germany - 1930's - 5" Tall
Excellent Condition
\$525 (266)



Elegant Mister Bunny
Made by Schuco Toys
Germany - 1930's - 6 1/2" Tall
Excellent Condition
\$750 (267)



Friar with Keys
Made by Schuco Toys
Germany - 1930's - 4 3/4" Tall
Excellent Condition
\$825 (268)



Fox with Goose in Suitcase
Made by Schuco Toys
Germany - 1940's - 5 1/4" Tall
Near Mint Condition
\$475 (269)



**Angel Musicians Trio Including
Violinist, Flautist and Drummer**
Made by Schuco Toys
Germany - Late 1920's - 5" Tall
Excellent Condition
\$4850 for the Set (270)

These angelic musicians are extremely rare. No collector has ever seen the full trio before.



German Tinplate Toys

Flatbed Delivery Lorry

Made By Hausser Company
Germany • 1936 • 11 1/2" Long
Pristine Condition
\$1800 (271)



Horse Drawn Milk Wagon

Made by Gebruder Marklin
Germany • 1904 • 13" Long
Pristine Condition
\$4400 (272)



WW1 Ambulance

Made by Lineol
Germany • 1935 • 12"
Near Mint Condition
\$4200 (273)

This is in particularly fine condition because it is a factory showroom sample.



Two Lamp Posts and a Stop Sign

Made by Gebruder Marklin Company
Germany • Circa 1906
Excellent Condition
\$3200 (274)

Lamp posts are 8" in height and the stop sign is 6 1/2" tall.



Rare Hand Enameled Limousine

Made by Georges Carette Cie.
Germany - Circa 1908 - 12 1/2" Long
Ex - Bill Bertoia Collection
Ex - Don Kaufman Collection
Mint Condition - Includes the
Original Chauffeur and Box
\$34,500 (275)



European Tinplate Autos

Cream and Blue Limousine

Made by the Fischer Company
Germany - Circa 1920
Mint Condition - 13" Long
\$7500 [\(276\)](#)



Impressive Lithographed Limousine with Bulldog Hood Ornament

Made by the Tipp Company
Germany - Circa 1925
Mint Condition - 15 1/2" Long
\$8500 [\(277\)](#)



**Scarce Rumble Seat Coupe
(Salmon, Rose and Taupe)**

Made by the Tipp Company
Germany - Circa 1928
Mint with Box - 10 3/4" Long
\$3850 (278)



**Chauffeured Limousine
(Rare Two Tone Green)**

Made by Karl Bub Co.
Germany - Circa 1928
Don Kaufman Collection
Pristine Litho - 15" Long
\$8250 (279)



German Toys

Peacock Squeak Toy

Germany - Circa 1880 | Near Mint Condition
\$1350 (280)



Guinea Hen Squeak Toy

Germany - Circa 1860 | Pristine Condition
\$1250 (281)



Wild Turkey Squeak Toy

Germany - Circa 1880 | Pristine Condition
\$1450 (282)



Six Wooden Soldiers

Germany - Circa 1875 | Pristine Condition
\$875 (283)



Cavalry Officer on his Horse

Germany - Circa 1875 | Excellent Condition - 6¾" Long
Tasteful Restoration Throughout
\$2200 (284)



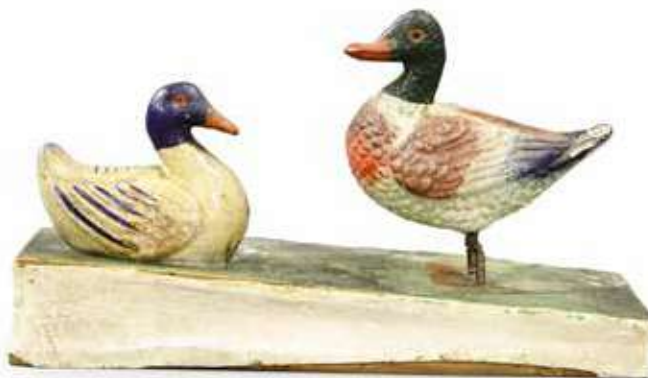
Rabbit Boy with Carrot Figural Candy Container

Germany - Circa 1930's | Mint Condition
\$875 (285)



Two Ducks Squeak Toy

Germany - Circa 1870 | Excellent Condition
Barenholtz Collection
\$1075 (286)



Small Heron Squeak Toy

Germany - Circa 1880 | Pristine Condition
\$1075 (287)





Strutting Roosters Platform Toy

Erzgebirge Region of Germany
Circa 1850 - 7½" Long
Pristine Condition
\$7500 (288)

Without a doubt, this extraordinary toy represents one of the finest surviving examples of early carving from the Erzgebirge Region of Germany. It has been illustrated in several books on the topic.

Officer on Horseback

Germany - Circa 1875
Near Mint - 9¼" Long
\$5750 (289)



German papier-mache and wood toys from this period are almost never found in such sensational condition as this elegant equestrian.

American Folk Art Toys

Comic Live Wire Acrobat

Made by Schoenhut Toys | Near Mint in Box - 9 3/4" Tall
Philadelphia - Circa 1920 | \$525 (290)



Articulated Canter Horse

Made by Lynes Toys | Pristine Paint - 10 3/4" x 12"
England - Circa 1920 | \$950 (291)

Rubber Ball Shooting Gallery

Made by Schoenhut Toys | Mint with Box
Philadelphia - Circa 1920 | 13" x 13"
\$2850 (292)

This extraordinarily colorful paper lithographed toy simulates the experience of going to the shooting arcade at the State Fair. A pellet gun used with tiny rubber balls can be aimed at various targets, including: pipes, clowns, a conventional target, a deer and a rabbit.



Crandall's Lively Horseman

By Charles Crandall Company
 Montrose, Pa. - Patented 1867
 Ex - Barney Barenholtz Collection
 Excellent Condition - 16 1/2" Tall
 \$8500 (293)



An ad in the "Youth's Companion" of October 30, 1879 described this pull toy as, "the most comical and pleasing mechanical toy ever seen. There is no clockwork to get out of order. It is strongly made, prettily painted, not easily broken and can be taken apart and packed in the box on which they perform. It represents Barnum's, circus rider to perfection." There are only a few known examples of this wonderful early wooden toy. It enthralled Barney Barenholtz when he first discovered it in the early 1970's. It is illustrated prominently on page 205 of his book *American Antique Toys 1830 - 1900*.

American Folk Art Toys

Collection of Five Felix the Cat Toys

Copyrighted by Pat Sullivan 1922 -1924
 New York City - Circa Mid 1920's
 One is 4 1/4", One is 5 3/4", two are 8"
 and the rare large Felix is 13 1/4" Tall
 All are in Excellent Condition
 \$3450 for the Full Set of Five. (294)



Artist's Mannequin Haberdashery Figure

European - Circa 1900 | Pristine Condition
 Mary Merritt Collection | 16" Tall
 \$4250 (295)



Folk Art Tammany Bank

Made by a Loving Parent | Great Condition
 American - Circa 1880's | 9 1/2" Tall
 \$1450 (296)



Unusual Carved Wooden Still Bank Possibly Christopher Columbus

European Made - Circa 1920 | Excellent Paintwork
 14" Tall
 \$2750 (297)





**Exuberant Painted Horseshoe
Decorated with
Masonic Symbols**

Upstate New York - Circa 1890
Near Mint Condition - 11" x 13½"
\$1075 (298)



Ceremonial Rites Hourglass

From the Shamokin Lodge for the
International Order of Odd Fellows
Pennsylvania - Circa 1895 - 12" Tall
\$3750 (299)

**Carved Grimacing Black Figure
Comically Sticking His Tongue Out**

Western New Jersey - Circa 1900
Excellent Paint & Patina - 21 ½" Tall
\$7500 (300)



**Farmer in Mule Drawn Gig
Entitled 'I BUY NO GAS'**

Identified as John Perhap
Pennsylvania - Circa 1920
Excellent - 18" x 14 ½" x 8 ½"
\$4500 (301)



American Folk Art

A Man with Glasses Wearing Blue & Gray

Carved by John Vivolo
Connecticut - 1970

Pristine
16 1/2" Tall
\$2250 (302)



Man with Top Hat Whirligig

American - Circa 1875

Excellent Condition
14" Tall
\$3250 (303)



Worker Carrying a Ladder Small White Bird on His Hat

Carved by John Vivolo
Connecticut - Circa 1970

Pristine Paint
19" Tall
\$2750 (304)



"Plaball" Pinball Baseball Game

American - Pat Pend. - 1920's

Pristine Condition - 24" x 26"
\$1250 (305)



Unusual Painted Checkerboard (Mauve, Red and Black)

American - Circa 1890's

Pristine - 15 1/2" x 18 1/4"
\$1250 (306)





Yacht Yolanda
By Gebruder Marklin Co.
Germany • Circa 1918 • 16"
Excellent Plus Condition
\$34,500 (307)



Yacht Havel
By Gebruder Marklin Co.
Germany • Circa 1910 • 29"
Excellent Condition
\$35,000 (308)



European Toys

Armored Battleship Cruiser

Made by Gebruder Bing
Germany • 1910 • 16" Long
Pristine with Original Box
\$5500 (309)



Sailor Playing Accordion Seated on a Whiskey Barrel

Made by George Heyde
Germany • 1934 • 100mm Scale
Very Good Condition
\$950 (310)

Marching Soldier Musician Gyroscopic Novelty Toy

By Carl Rossignol
France • 1910 • 3 3/4" Tall
Excellent Condition
\$1500 (311)



Large Articulated Field Gun

By Gebruder Marklin Company
Germany • 1906 • 17" Long
Pristine Plus Condition
\$7500 (312)

One of Marklin's largest and most intricate guns with both horizontal and lateral gun movement and recoiling barrel.



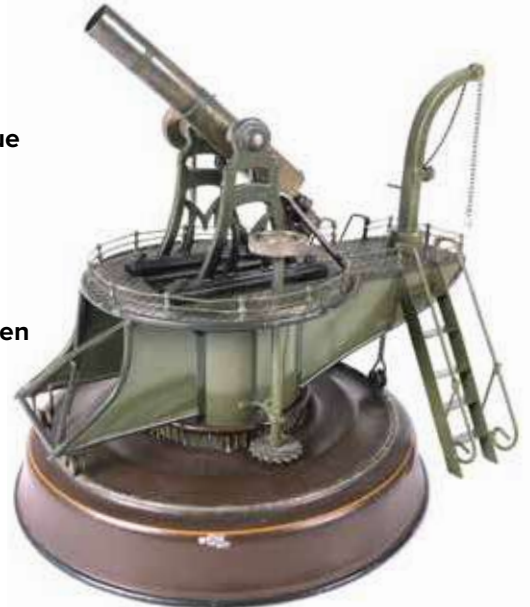
Large Naval Coastal Gun - Blue

By Gebruder Marklin Company
Germany • 1908 • 9 1/2" High
Excellent Condition
\$6500 (313)



Large Naval Coastal Gun - Green

By Gebruder Marklin Company
Germany • 1912 • 9 1/2" High
Excellent Condition
\$4500 (314)



Small Field Gun

By Gebruder Marklin Co.
Germany • 1920's • 3 1/2"
Excellent Condition
\$225 (315)



Naval Field Gun

By Gebruder Marklin Co.
Germany • 1920's • 4"
Excellent Condition
\$275 (316)



Small Field Gun

By Gebruder Marklin Co.
Germany • 1920's • 4 1/2"
Excellent Condition
\$295 (317)



Various Makers

Four River Boats

Made by Buchner
Germany • 1890's
4 1/2" to 5" Long
Pristine Condition
\$3800 (318)



Exquisite hand-painted "bath tub" boats.

Bavarian Village

Made by Krause
Germany • 1890's
Excellent Condition
\$4500 (319)

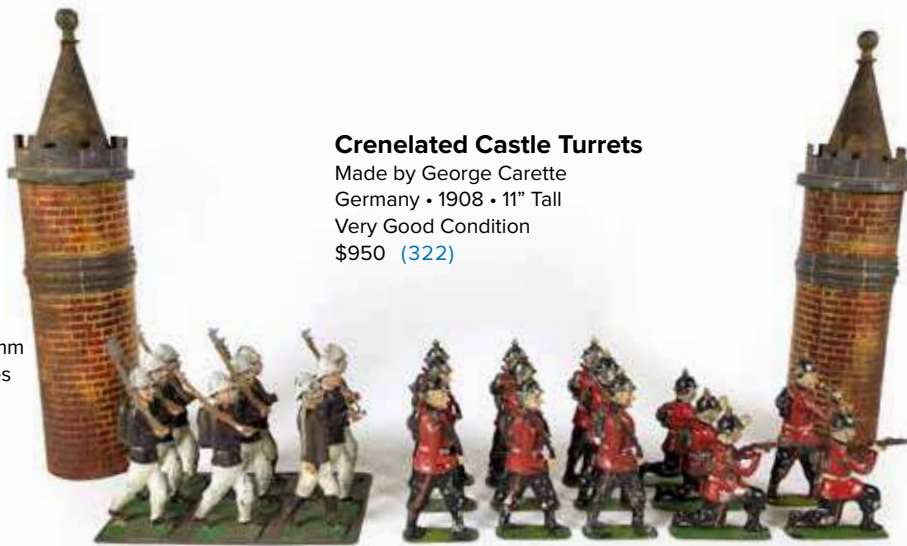


This is a wonderful tinplate toy village with lead appliqué. The set includes nine buildings and three trees.

"A Day in the Park" Rare Set of Demi-Rounds

Made by NORIS Co.
35mm Scale in Original Box
Set includes 48 pieces.
Pristine Condition
\$3200 (320)





Crenelated Castle Turrets

Made by George Carette
 Germany • 1908 • 11" Tall
 Very Good Condition
 \$950 (322)

An Unusual Line Infantry Kneeling, Firing & Marching

Made by Meir
 Germany • 1900's • 90mm
 Set includes fourteen pieces.
 Excellent Condition
 \$1200 (323)

Marching Marines

Made by Meir
 Germany • 1900's • 90mm
 Set includes nine figures
 on a removable parade
 ground base.
 Excellent Condition
 \$950 (321)

Fortified Bridge and Naval Armada

Made by George Heyde Company
 Germany • Circa 1890's
 Excellent Plus Condition
 \$38,000 (324)

At this time, this is the only known
 example of this spectacular toy. Includes
 Heyde Armada of seven battleships.



Harbor Scene with Lighthouse

Made by George Heyde Company
 Germany • Circa 1890's
 Pristine Condition
 \$14,500 (325)

This represents a wonderful
 depiction of a turn of the
 century harbor. It includes
 28 separate pieces,
 comprising a lighthouse,
 a harbor entrance, four
 armored vessels, three
 sailing ships, a peek-a-boo
 submarine and seventeen
 waves.



Various Makers

Herero Campaign - Boer War

A Very Scarce Demi-Round Set
By George Spenkuch Company
Germany • Circa 1905 • 29 Pieces
Pristine Condition with Original Box
\$2950 [\(326\)](#)



The Boer Cavalry

George Heyde Company
Germany • Circa 1910 • 50mm
This set includes 12 pieces.
Pristine Condition with original box
\$3850 [\(327\)](#)



**Kaiser Wilhelm II
The Ulan Regiment**

Made by Haffner
Germany • Circa 1890
Exquisite Set - 9 Pieces
90mm Scale In the Original Box
Pristine Plus Condition
\$27,500 (328)



Prussian Infantry at Attention

Made by Haffner
Germany • Circa 1890
90mm Scale In the Original Box
(Box lid is missing edges)
"Rohrenottos" 11 Piece Set
Pristine Condition
\$12,500 (329)



German Brass Band

Made by Haffner
Germany • Circa 1890
90mm Scale
"Rohrenottos" 11 Piece Set
Excellent Condition
\$4500 (330)



Various Makers

A Monumental Lifeguard

Made by NORIS
Germany • Circa 1895 • 120mm
Excellent Plus Condition
\$6000 (331)



King George V

George Heyde Company
Germany • Circa 1910 • 100mm
Excellent Plus Condition
\$2750 (332)



U. S. Cavalry Officers & Bugler

George Heyde Company
Germany • Circa 1910 • 80mm
This group includes four pieces.
Excellent Plus Condition
\$2950 (333)



Rare U. S. Cavalry Officer

George Heyde Company
Germany • Circa 1910 • 100mm
Pristine Condition
\$2500 (334)



Mexican Cavalry Officer

By George Heyde Company
Germany • Circa 1920 • 80mm
Excellent Condition
\$925 (335)



**Infantry of the Line
First Empire Officer**

Made by Charles Fouille
Paris • Circa 1950 • 7 1/2"
Near Mint Condition
\$1650 (336)



**Chasseur a Cheval
First Empire Officer**

Made by Charles Fouille
Paris • Circa 1950 • 9"
Near Mint Condition
\$2750 (337)



Mounted Kaiser Wilhelm

By the Haffner Company
Germany • Circa 1910 • 75mm
Excellent Condition
\$825 (338)



Mounted Cuirassier

By the Haffner Company
Germany • Circa 1910 • 75mm
Excellent Condition
(Saddle Replaced)
\$1100 (339)



Heyde Company

Prussian Infantry

George Heyde Company
Germany • Circa 1920 • 65mm
This set includes 12 pieces.
Excellent Condition
\$2800 (340)



Prussian Marching Band with Mounted Officer

George Heyde Company
Germany • Circa 1910 • 75mm
This set includes 13 pieces.
Excellent Plus Condition
\$5500 (341)



German Line Infantry Marching

George Heyde Company
Germany • Circa 1910 • 75mm
This set includes ten pieces.
Excellent Condition
(Lacks one Rifle)
\$5500 (342)



British Line Infantry Marching

George Heyde Company
Germany • Circa 1910 • 60mm
This set includes
12 pieces.
Excellent Condition
\$2950 (343)



Nine Mounted Lancers

By the Krause Company
Germany • Circa 1875 • 80mm
Excellent Plus Condition
\$24,500 (344)

This extraordinary boxed set of nine mounted lancers is exceptional in every detail. They use truly wonderful colors and they are super refined and delicate figures.



Various Makers



U. S. 22nd Infantry Firing on the Enemy

By the George Heyde Company
Germany • Circa 1910 • 50mm
This set includes 24 pieces.
Pristine Condition with original box
\$3300 [\(345\)](#)

Prussian Band with Bandstands

By the Christian Ammon Company
Germany • Circa 1880 • 65mm
This rare early set includes 25 pieces.
Excellent Plus Condition
\$7000 [\(346\)](#)



U. S. 22nd Infantry

By the George Heyde Company
Germany • Circa 1910 • 75mm
This beautiful set includes 12 pieces.
Excellent Plus Condition
\$5500 [\(347\)](#)



The Triumph of Germanicus

By the George Heyde Company
Germany • Circa 1920's • 50mm
From the Schenk Collection
Pristine Condition • 38 pieces
\$6500 (348)



Germanicus seated atop the elephant is very rare.
This elegant box is for display only.



Winter Set with Observation Balloon

By the George Heyde Company
Germany • Circa 1920 • 50mm
Excellent Condition • 11 pieces
\$26,500 (349)





Greeks - 10 Figures

By the George Heyde Company
Germany • Circa 1930 • 50mm
Pristine Condition with original box
\$475 (350)

Mounted Knights Charging

This set includes 11 pieces.
By the George Heyde Company
Germany • Circa 1910 • 60mm
Very Good Condition
\$3850 (351)



Barbarians - 10 Figures

By the George Heyde Company
Germany • Circa 1930 • 50mm
Excellent Condition with original box
\$850 (352)

German Supply Column

By the George Heyde Company
Germany • Circa 1910 • 50mm
This set includes 36 pieces.
Pristine Plus Condition with original box
\$3500 (353)



Rare German Telegraph Set

By the George Heyde Company
Germany • Circa 1910's • 50mm
Excellent Plus Condition • 56 pieces
\$12,500 (354)



French - German Battle Scene

By the George Heyde Company
Germany • Circa 1920 • 50mm
This dramatic set includes 22 pieces.
Pristine Plus Condition with original box
\$1450 (355)

Various Makers

U. S. Colonial Infantry

By George Heyde Company
Germany • Circa 1920 • 50mm
This set includes nine pieces.
Pristine Condition with original box
\$525 (356)



U. S. Cavalry

By George Heyde Company
Germany • Circa 1920 • 50mm
This set includes a dozen pieces.
Excellent Plus Condition with original box
\$750 (357)



German Artillery Set

By NORIS
Germany • Circa 1900 • 30mm
This elegant set includes 18 pieces.
Pristine Condition with original box
\$1850 (358)



Lion Hunt - 15 Pieces

By the George Heyde Company
Germany • Circa 1910 - 50mm
Very Good Condition • 15 pieces
\$6500 (359)



Elephant Hunt

By the George Heyde Company,
Germany • Circa 1910 - 50mm
Excellent Condition - figures tacked to display board.
\$11,000 (360)

Wonderful provenance from the descendant of the original owner. Was presented as a farewell gift to the family nanny in India, circa 1920. In the original as gifted display case.



Heyde Company

The Sultan of Morocco

By the George Heyde Company
Germany • Circa 1920 • 50mm
Pristine Condition with original box
19 pieces
\$3500 (361)



British Camel Corps with Attacking Arabs

By the George Heyde Company
Germany • Circa 1920 • 50mm
Very Good Condition • 21 pieces
Set pictured in *Heyde Hunters*
\$6250 (362)



Moroccans

By the George Heyde Company
Germany • Circa 1920 • 50mm
Pristine Condition with original box
24 pieces
\$2750 (363)





Buffalo Bill Cody with Annie Oakley Wild West Show
Made by George Heyde Company
Dresden • Circa 1910 • 60mm Scale
Totally Unique Set Never Seen Before
Excellent Condition
\$27,500 (364)



Monumental Indian Brave with Bow
Made by George Heyde Company
Dresden • Circa 1910 • 140mm Scale
Very Good Condition
\$1375 (365)



Indian Camp Life
Made by George Heyde Company
Dresden • Circa 1920 • 30mm Scale
This outrageous set includes 41 pieces.
Excellent Condition
\$4800 (366)

Heyde Company

Woman and Rooster on Fence

By George Heyde Company
Dresden • 1920's • 120mm Scale
Excellent Condition
\$750 (367)



Skeleton on Lamp Post

By George Heyde Company
Dresden • 1930 • 6 3/4" Tall
Excellent Condition
\$950 (368)



Large Scale Stag & Doe

By George Heyde Company
Dresden • 1920's • 120mm Scale
Pristine Condition
\$345 (369)



Mounted Knights at the Hilt

George Heyde Company
Germany • Circa 1910 • 55mm
Very Good Condition
\$285 (370)



Fox Hunt Figure

By George Heyde Company
Dresden • 1930's • 90mm
Pristine Condition
\$345 (371)



Group of Three Polo Players

By George Heyde Company
Dresden • 1930's • 90mm
Pristine Condition
\$1250 (372)



Mounted Arabs Charging

By George Heyde Company
Dresden • 1920's • 50mm
Excellent Condition - missing one tail
12 pieces
\$2500 [\(373\)](#)



Mounted Arabs Charging

By George Heyde Company
Dresden • 1920's • 60mm
Pristine Condition • 12 pieces
\$4250 [\(374\)](#)



**Arabs on Rearing Horses
Rare Set of Six Figures
in original box**

By George Heyde Company
Dresden • Circa 1910 • 60mm
Excellent Condition • 6 pieces
\$4800 [\(375\)](#)



Hollow cast horses with
elaborately cast reins.



Heyde Company

Religious Nativity Set

Made by George Heyde Company
Dresden • Circa 1920 • 50mm Scale
Pristine Condition • 36 pieces
\$7800 (376)



African Native Collecting Water Unusual Novelty Candlestick

By George Heyde Company
Dresden • Circa 1920 • 160mm
Excellent Condition
\$1075 (377)



Arab Mounted on a Camel

By George Heyde Company
Dresden • Circa 1920 • 80mm
Excellent Condition
\$485 (378)



Two Arabs at the Well

By George Heyde Company
Dresden • Circa 1910
Well is 12" Tall with
140mm figures.
Excellent Condition
\$2800 (379)



Collection of Miniature Military Hats

Paris, France • Circa 1930 • 20 pieces

Excellent Condition

\$12,500 (380)



Various Makers

Greenwood and Ball Figures

England • Circa 1954 • 7 pieces

Near Mint Condition

\$3200 [\(381\)](#)

In original boxes



Collection of Stadden Officers

England • Circa 1960 • 12 pieces

Near Mint Condition

\$3200 [\(382\)](#)



Collection of Vertunni Officers

Paris, France • Circa 1960 • 12 pieces

Pristine Condition

\$3200 [\(383\)](#)



Collection of Graham Farish Figures

England • Circa 1960 • 20 pieces

Pristine Condition

\$3800 [\(384\)](#)

Includes rare trumpeter and pages.



Collection of MIM Figures

Belgium • Circa 1952
40 mounted and 56 foot figures.
\$22,000 (385)



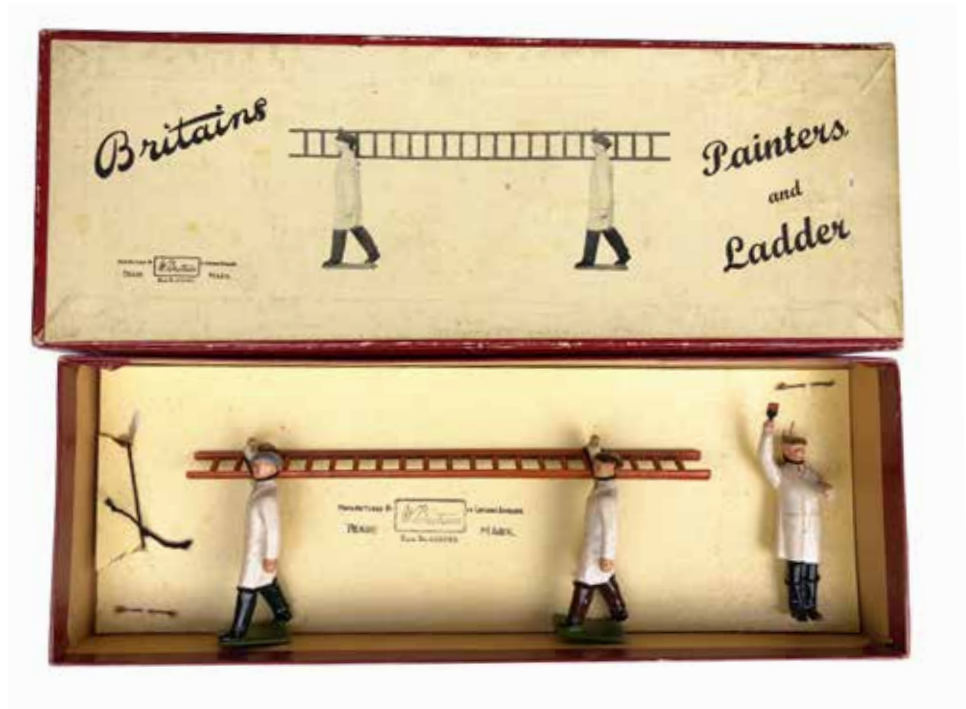
Set #1495 Painters and Ladder

Britains • England • Circa 1954

Tied in original box 4 pieces

Near Mint Condition

\$1800 (386)



Set #25 Soldiers that Shoot

Britains • England • Circa 1895 • 4 pieces

Excellent Condition

\$2500 (387)



Set #15MG Miniature Garden

Britains • England • Circa 1934

In original box

Excellent Condition

\$475 (388)





Full Band of the Coldstream Guards

Britains • England • Circa 1911 • 21 Pieces
 Near Mint Condition with Pristine Box.
 \$5500 (389)

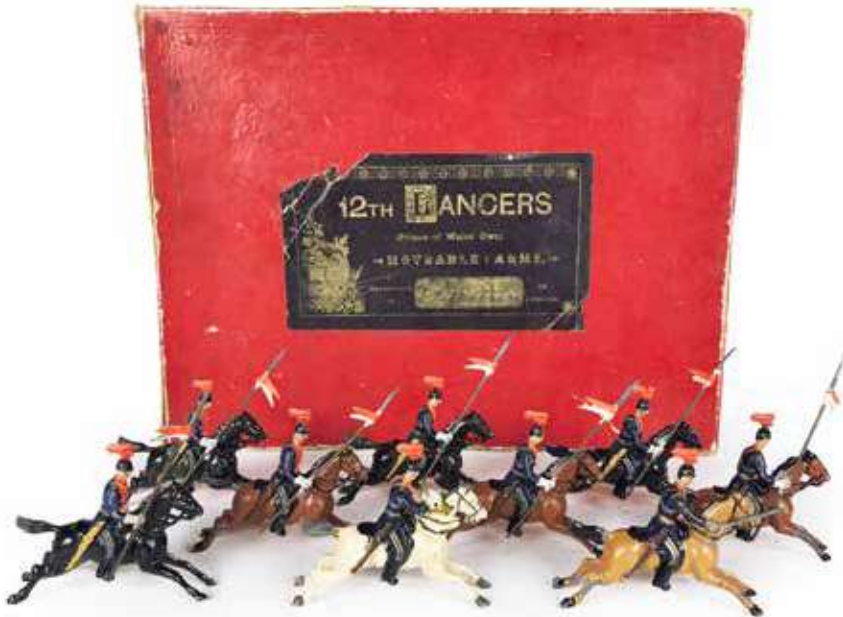
In original box, 2nd Version with moveable arms and gaitors. This set is an extremely rare 21 piece set with an interesting A. W. Gamage label on the box. Provenance Dimitri Ilyinsky Collection in protective leather box.

Britains

Extremely Rare Paris Office Boer Infantry

Britains • England • Circa 1908
Pristine Condition with original box
11 pieces
\$8500 (390)

Never before seen set in exquisite condition.
Mounted Officer with fixed rifle Infantry
Marching at the slope on oval bases



Set #8 12th Lancers

Britains • England • Circa 1893
Pristine Condition • 9 pieces
Box Excellent
\$12,500 (391)

In original box, 1st version with slot arms. Rarely seen with box.

Paris Office Chasseurs and Cuirassiers

Britains • England • Circa 1910
Excellent Condition • 10 pieces
\$5000 (392)

Very rare box marked W.B. for William Britains.





Set #144 Royal Field Artillery

Britains • England Circa 1935 • 9 pieces
Near Mint Condition in Pristine Box
\$8500 (393)

In original box with backing Provenance The Dimitri Ilyinsky Collection in protective leather box.



Set #146 Royal Army Service Corps Wagon

Britains • England Circa 1906 • 5 pieces
Pristine Condition in Excellent Box
\$1500 (394)

In original box with collar harness.



Set #316 Royal Horse Artillery at the Halt

Britains • England Circa 1935 • 9 pieces
Excellent Condition; Missing one plume.
Excellent Box
\$6500 (395)

In original box Provenance The Dimitri Ilyinsky Collection in protective leather box.

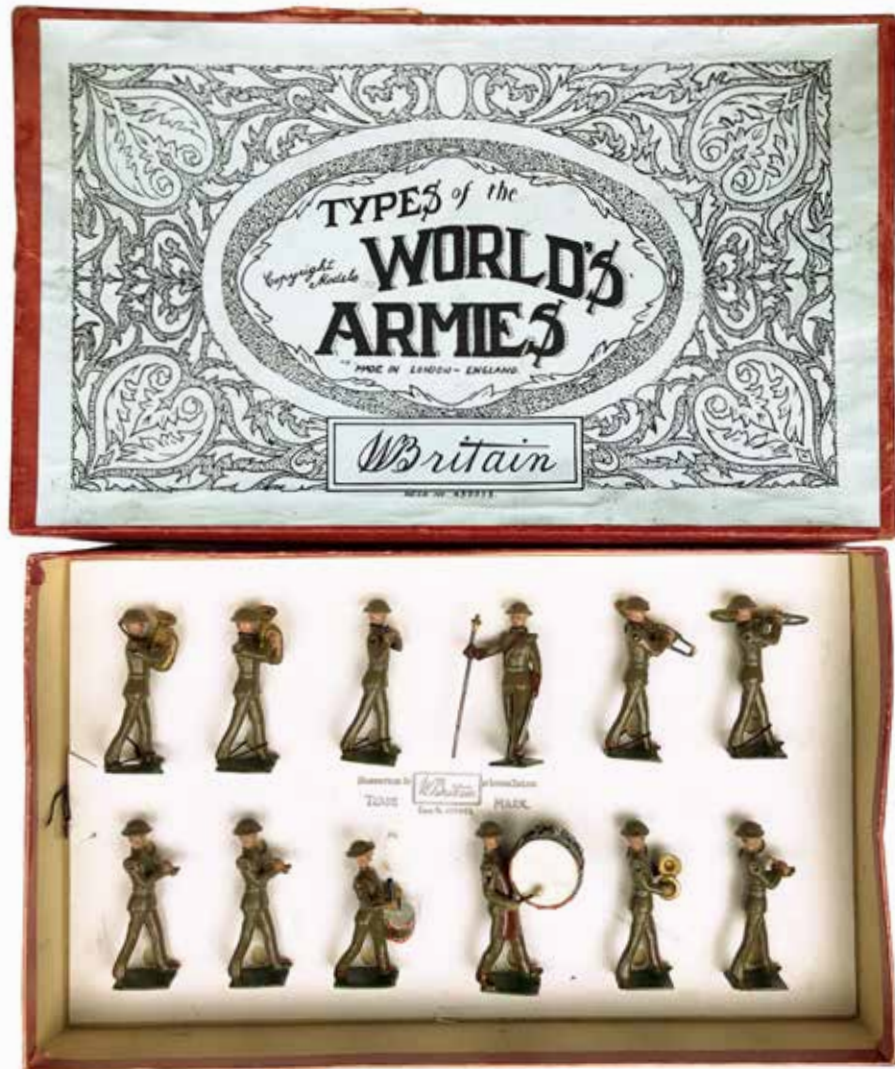


Britains

Set #1301 - U. S. Military Band

Wearing Steel Helmets
Britains • England • Circa 1939
Pristine Condition
\$5500 (396)

This extraordinarily rare twelve piece set is in the original box with tie card.



Set #102 - British Army Display

Britains • England • Circa 1934
Pristine Plus Condition
\$7500 (397)

This impressive set of 33 pieces is in the original four tiered box with tie cards.



Set #3/225 Bahamas Police on Parade

Britains • England • Circa 1965
Near Mint Condition with original box
\$2500 (398)

Very rare 8 piece set
tied in original box



Set #3/225A Bahamas Police on Parade

Britains • England • Circa 1965
Excellent Condition
\$2200 (399)

Very rare 4 piece configuration.

Set #2186 Full Bahamas Police Band

Britains • England • Circa 1960
Near Mint Condition
\$14,000 (400)



Extremely rare originally tied in original box. 28 pieces
Provenance The Dimitri Ilyinsky Collection in protective leather box.

Britains

Set #8 4th Queen's Own Hussars

Britains • England • Circa 1896
Excellent Condition
\$2800 (401)

In original box with tie card, 1st Version rocking horse. 5 pieces



Set #24 9th Queen's Royal Lancers

Britains • England • Circa 1896
Excellent Condition
\$4200 (402)

In original partitioned box, 1st Version cross legged. 5 pieces



Set #43 2nd Lifeguards

Britains • England • Circa 1900
Excellent Condition
\$3500 (403)

In original partitioned box with short carbines. 5 pieces Provenance Ernest Hilary Weighill Collection



Set #44 2nd Dragoon Guards

Britains • England • Circa 1902
Pristine Condition with Excellent Box
\$3400 (404)

In original box with tie card. 5 pieces



Set #74 Royal Welsh Fusiliers with Goat Mascot

Britains • England • Circa 1904
Pristine Condition
\$3800 (405)

In original slotted box, 1st Version on oval base. 8 pieces



Set #83 The Middlesex Yeomanry

Britains • England • Circa 1898
Excellent Condition
\$6500 (406)

Rare transitional set photographed on page 26 of *The Great Book of Britains* and the box is photographed on page 56 of *Britains Toy Soldiers*. 5 pieces



Set #98 King's Royal Rifle Corps

Britains • England • Circa 1899
8 pieces Pristine Condition
\$5500 (407)

In original box with backing, spiked helmet pigeon chested. Provenance Bert Erlich Collection, Dimitri Ilyinsky Collection

Set #105 Imperial Yeomanry

Britains • England • Circa 1900
Near Mint Condition with Pristine Box
\$6500 (408)

In original partitioned box. This is the finest known example of this very rare set. Provenance Dimitri Ilyinsky Collection in protective leather box.



Set #108 6th Inniskilling Dragoons

Britains • England • Circa 1900
Pristine Condition with Excellent Box
\$3400 (409)

In original box with backing and early sand colored uniforms. 5 pieces

Set #106 6th Dragoon Guards

Britains • England • Circa 1900
Pristine Condition with Excellent Box
\$2400 (410)

In original box with backing
Provenance The Lyle Thurborn Collection
5 pieces



Set #175 Austro-Hungarian Lancers

Britains • England • Circa 1930
Near Mint Condition with Pristine Box
\$1800 (411)

In original box with backing.
Provenance The Dimitri Ilyinsky Collection. 5 pieces



Set #218 Spanish Cavalry

Britains • England • Circa 1930
Excellent Condition
\$2800 (412)

In original box with backing. 5 pieces

Britains

Set #233A USA Infantry

Britains • England • Circa 1936
Pristine Condition • 18 pieces
\$6800 (413)

Extremely rare Soldiers on
Parade stand up box



Set #37 Full Band of the Coldstream Guards

Britains • England • Circa 1954
Originally tied in box • 21 pieces
Near Mint Condition with Pristine Box
\$950 (414)



Scout Car

Warren Lines- Circa 1936
Manhattan, New York
5 Pieces with original box.
Pristine Condition
\$4200 (415)



Field Gun

Warren Line - Circa 1936
Manhattan, New York
1 Piece with original box
Pristine Condition
\$425 (416)



Field Gun with Gunner Seats

Warren Line - Circa 1936
Manhattan, New York
1 Piece with original box
Pristine Condition
\$475 (417)



Limber Wagon

Warren Line - Circa 1936
Manhattan, New York
1 Piece with original box
\$225 (418)



Warren Toy Soldiers



Mounted Cavalry Flag and Pennant Bearers

Warren Lines - Circa 1936
Manhattan, New York
4 Pieces with original boxes.
Near Mint Condition
\$3800 (419)



Mounted Officer Squadron with Sabers

Warren Lines - Circa 1936
Manhattan, New York
5 Pieces with original box.
Pristine Condition
\$3600 (420)

Infantry Squadron at Attention

Warren Lines - Circa 1936
Manhattan, New York
8 Pieces with original box.
Excellent Condition
\$2400 (421)



Flag & Pennant Bearers with Mounted Officer

Warren Lines - Circa 1936
Manhattan, New York - 7 Pieces
Pristine Condition
\$2200 (422)



Field Artillery

Warren Lines - Circa 1936
Manhattan, New York
15 Pieces with original box.
Pristine Condition
\$4400 (423)



American Dimestore Soldiers



Three Lead Dimestore Soldiers to Include: Two Prone Soldiers and a Sniper Dressed in Camouflage
 Made by Barclay and Manoil - 1930's
 Excellent to Near Mint - \$275 (424)



Two Lead Dimestore Indians Mounted on Horseback
 Both by Barclay - Circa 1930's
 Near Mint Condition - \$175 (425)



Three Lead Dimestore Figures to Include: Two Firemen and a Cop
 Made by Barclay and Manoil - 1930's
 Excellent to Near Mint - \$225 (426)



Two Rare Lead Dimestore Soldiers to Include: an Italian Soldier and an Advancing Japanese Soldier
 Both are by Barclay - Circa 1940
 Near Mint Condition - \$750 (427)



Two Lead Dimestore Soldiers to Include: Man at Typewriter and a Soldier Eating Soup
 Made by Barclay and Manoil
 Excellent Condition - \$200 (428)



Two Rare Lead Dimestore Soldiers to Include: Parachutist Landing and a Soldier Jumping with Chute Mid-Air
 Made by Barclay and Manoil - 1930's
 Near Mint Condition - \$375 (429)



Two Lead Dimestore Figures to Include: Masked Cowboy on Horseback & Standing Cowboy
 Both are by Barclay - 1930's
 Near Mint Condition - \$175 (430)



Three Lead Dimestore Soldiers to Include: Soldier Behind Wall, Targets and an Officer Reading a Report
 Made by Barclay and Manoil - 1930's
 Excellent and Pristine Condition - \$275 (431)



Two Lead Dimestore Soldiers to Include: Flag Bearer, Tent and a Spotlight Projectionist
 Made by Barclay and Manoil - 1930's
 Very Good Condition - \$185 (432)

American Dimestore Soldiers



Marching Band and Flag Bearer Six Lead Dimestore Soldiers

Five by Barclay & one by Manoil
Made in America - Circa 1930's
All in Pristine Condition - \$450 (433)



Five Lead Dimestore Soldiers to Include: Signal Flag, Telephone Operator, Wireless Operator, Homing Pigeon Dispatcher & Range Finder

All five made by Barclay - Circa 1930's
All in Pristine Condition - \$375 (434)



Six Lead Dimestore Soldiers to Include: Nurse, Doctor, 2 Stretcher Bearers carrying Wounded Soldier and a Soldier with His Arm in a Sling

Made by Barclay and Manoil
Made in America - Circa 1930's
All in Pristine Condition - \$450 (435)



Three Lead Dimestore Soldiers to Include: Tommy Gunner, Anti-Aircraft Man and a Hand Grenade Thrower

Made by Barclay and Manoil - Circa 1930's
All in Pristine Condition - \$225 (436)

Three Lead Dimestore Soldiers to Include: Gas Mask Charging, Gas Mask with Flare Gun and Gas Mask with Bomb Pouch

Made by Barclay and Manoil - Circa 1930's
All in Pristine Condition - \$175 (437)

Three Lead Dimestore Soldiers to Include: Griddle Master, Aviator Mechanic and the Crouching Photographer

Made by Barclay and Manoil - Circa 1930's
Excellent and Pristine Condition - \$275 (438)



Three Lead Dimestore Soldiers to Include: Machine Gunner, Missile Carrier and an Artillery Loader

Made by Barclay and Manoil - Circa 1930's
Excellent and Pristine Condition - \$175 (439)



Three Lead Dimestore Soldiers to Include: Running Soldier, General Patton & a Sentry with a Blue Gun

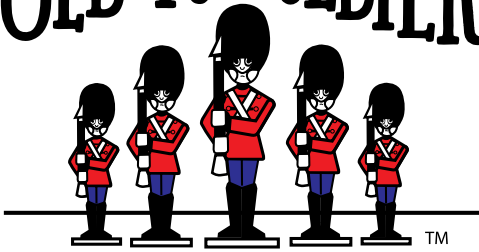
Made by Barclay and Manoil - Circa 1930's
Excellent and Pristine Condition - \$350 (440)



Three Lead Dimestore Soldiers to Include: Motorcycle with Sidecar, Bicycle & Motorcycle with Mounted Machine Gun

Barclay, Manoil and Jones - Circa 1930's
Excellent and Pristine Condition - \$450 (441)

OLD TOY SOLDIER

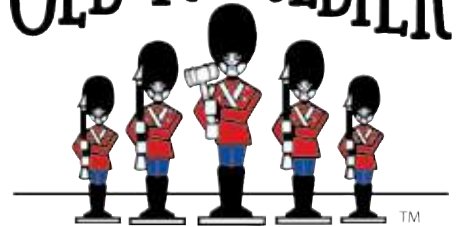


oldtoysoldier.com



Ray Haradin
Toys of Yesteryear
raytoys.com

OLD TOY SOLDIER



AUCTIONS USA

oldtoysoldierauctions.com



cybertoyauctions.com

Follow us!



You Tube

Subscribe to our YouTube channel today:
Toy Soldiers, Antiques and Collectibles



rslauctionco.com

P.O. Box 13323 - Pittsburgh, PA 15243 ~ 412-343-8733
#oldtoysoldier ~ raytoys@aol.com ~ #rayandbre

