



Toys of Yesteryear 2025

Come with me and explore the Golden Age of Toys! We all experienced, and still fantasize about, the thrill fortunate children experienced when they entered a Toy and Novelty Shoppe around the turn of the century. Life was very hard for the masses but for the privileged class and their offspring it afforded luxuries of many a type: imagine walking out of the shoppe, then or now, with a 30" clockwork Battleship; or jumping with joy at the thought of conducting military maneuvers in the family pond; or being captain of the "Baltimore" or "Havel" in taking the family on a Sunday cruise.

War was always in the air so these ships needed to beware of the enemies' Torpedo Boats and Submarines. As with these early Sidewheelers and Riverboats, all herein presented to you, they represent the epitome of early Toy manufacture. Live steam driven vessels such as the Rock & Graner "London" demonstrated superior German craftsmanship. Yet not to be outdone, the French produced their own wonders: Barre was one on the earliest of French manufactures and their remarkable hot air Riverboat is an example of how both companies, as well as both countries, competed in seeking to capture the hearts and minds of their youth.

With war there came Soldiers, housed in barracks. Some of the earliest and most popular Soldier production was in the form of flats and demi-rounds. First introduced in the 1700's, these sets were very often whimsical and imaginative recreations of specific battles such as the Sedan, a turning point for Napoleon and his forces, ever serving too to inspire and educate the future officer. Grand sets like the Streets of Tokyo afforded these young warriors the chance to play act war for when they were in the field of battle all too soon thereafter. Other sets were produced to commemorate such historical events as the opening of important buildings as with the Crystal Palace in 1851.

By way of providing their own contribution and inspiration to cultural tides, Heyde and Noris produced virtually every regiment of the German army. Their large scale (aka monumental) figures were manufactured by their craftsmen in a size which allowed children to play war games as availed by the highest level of parental expenditure. The British, for their part, were not ones to be outdone: companies like Britains Limited started producing, beginning in 1863, virtually every patriotic regiment in their own form of retaliation and so too provided their own young warriors with access to their own imaginations.

Within this catalog you will find some of the very best Toys and Toy Soldiers ever produced. Each item has been personally inspected in allowing for only the best as I invite you to take a step back in time into my turn of the century toy shoppe. I hope you exit with a smile of wondrous enjoyment on your face.




RAY HARADIN
Toys of Yesteryear
1039 Lakemont Drive
Pittsburgh, PA 15243-1817
(412) 343-8733
Fax: (412) 344-5273
email: raytoys@aol.com
raytoys.com



Ray Haradin
412-343-8733
FAX 412-344-5273
raytoys@aol.com



 facebook.com/oldtoysoldier  @oldtoysoldier  @oldtoysoldier

 Subscribe to our channel - Ray and Bre Live



1 | “JEANNE D’ARC” BATTLESHIP
\$90,000

Gerbruder Marklin & Cie. Circa 1908. 30” Condition very fine.

Found in the historic French spa town of Vichy, this magnificent toy, named after the French heroine who lead the French Army to victory in the Hundred Years War, is the epitome of crafted elegance. Complete with two stacks, railed observation decks, wheelhouse, searchlights, working cranes and stairs it is typically referred to as “2nd Series” (viz. distinctive prow). Therein this clockwork powered example, on original wheeled stand, is of early production (viz. the rarer form of lifeboat as it further rests within cradle (4) as opposed to hang from davits). An exceptional piece, finely painted in great detail with lovely patina to varnish.

Extremely rare and the “go to” standard for warship excellence.





2 | "BALTIMORE" SIDEWHEELER
\$115,000

Gebrüder Marklin & Cie., Germany. Circa 1898. 20"
Condition excellent.

Found stored away wrapped in a quilt, this highly-stylized, romantic sidewheeler is from the apex of Marklin's "Golden Era" of highly sought production. Clockwork driven with original key. On original iron stand. Simply a phenomenal trophy piece, of extreme rarity, and the "go to" standard of riverboat excellence.

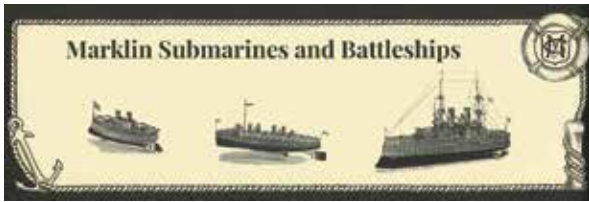




3 | "HAVEL" YACHT
\$26,000

Gebruder Marklin & Cie, Germany. Circa 1910. 28"
Condition excellent.

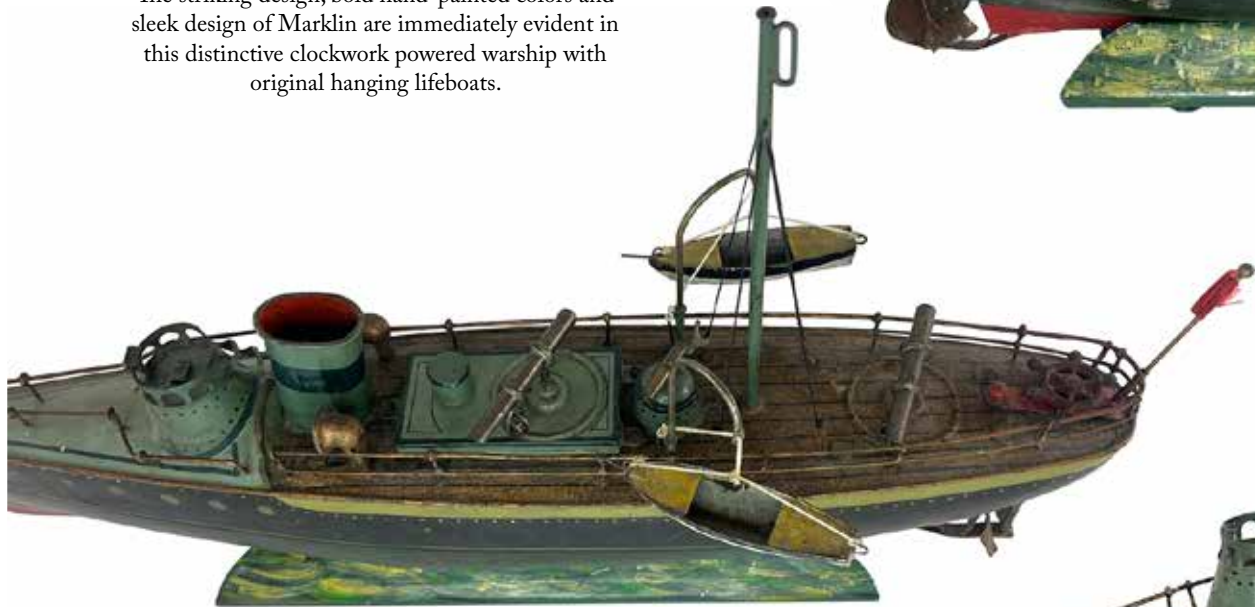
A lovely example of this elegant clockwork powered yacht, complete with connecting antenna between masts and on original wave stand, is in the larger of its' two manufactured sizes. This boat enjoyed a long production run due to its significant visual appeal to both child and adult alike.



4 | TORPEDO BOAT
\$24,500

Gebruder Marklin & Cie, Germany. Circa 1906. 20"
Condition superb.

The striking design, bold hand-painted colors and sleek design of Marklin are immediately evident in this distinctive clockwork powered warship with original hanging lifeboats.





5 | BATTLESHIP

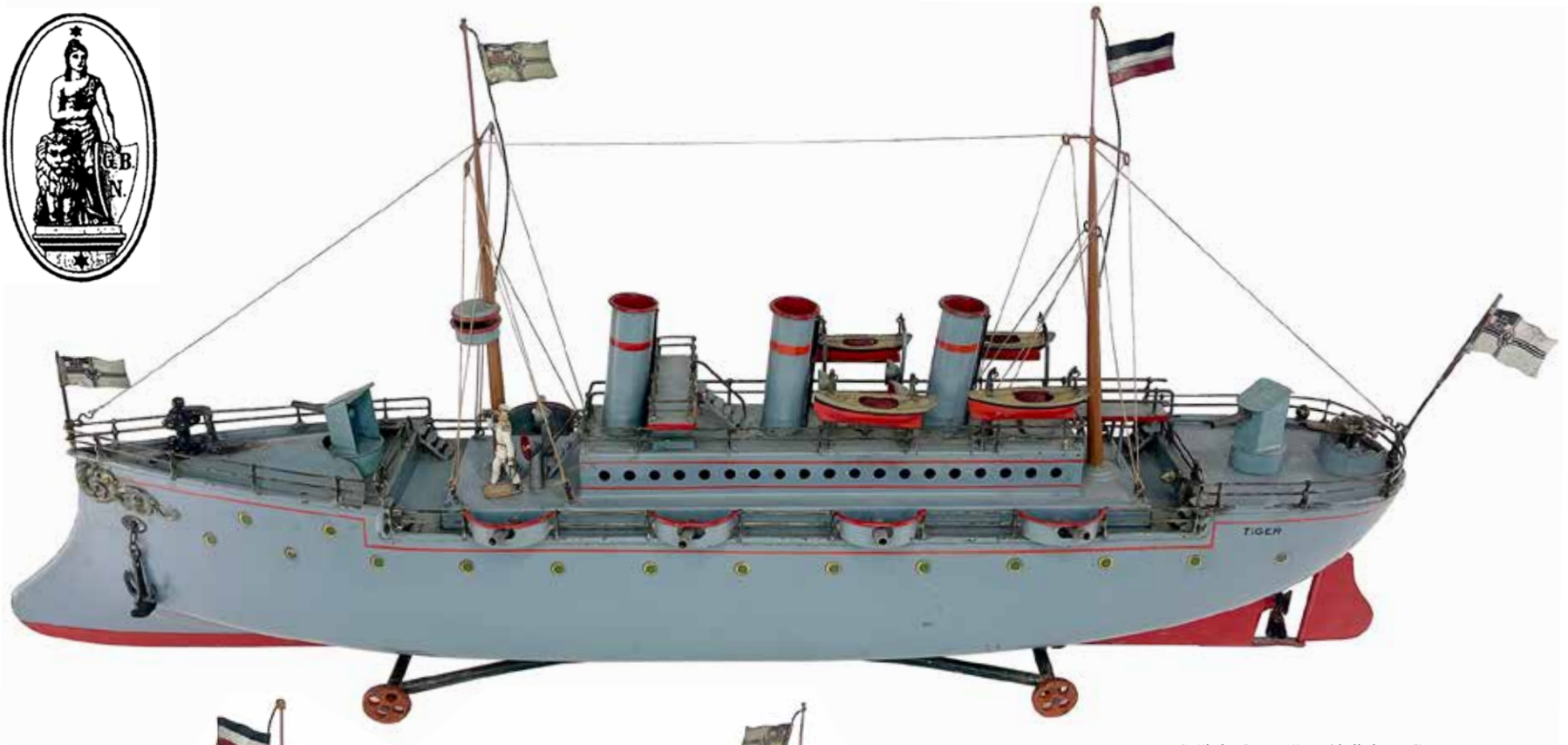
\$32,500

Gebruder Marklin & Cie, Germany. Circa 1930. 36"
Condition near mint.

After the Great War, Marklin's subsequent toy design took on a greater realism, often referred to as "3rd Series", as is evident in this superbly appointed clockwork powered battleship with three propellers, two smokestacks, six life boats, six large cannons above deck and twelve below.







6 | "TIGER" BATTLESHIP
\$19,500

Gerbruder Bing, Nuremberg, Germany. Circa 1902. 28"
Condition pristine.

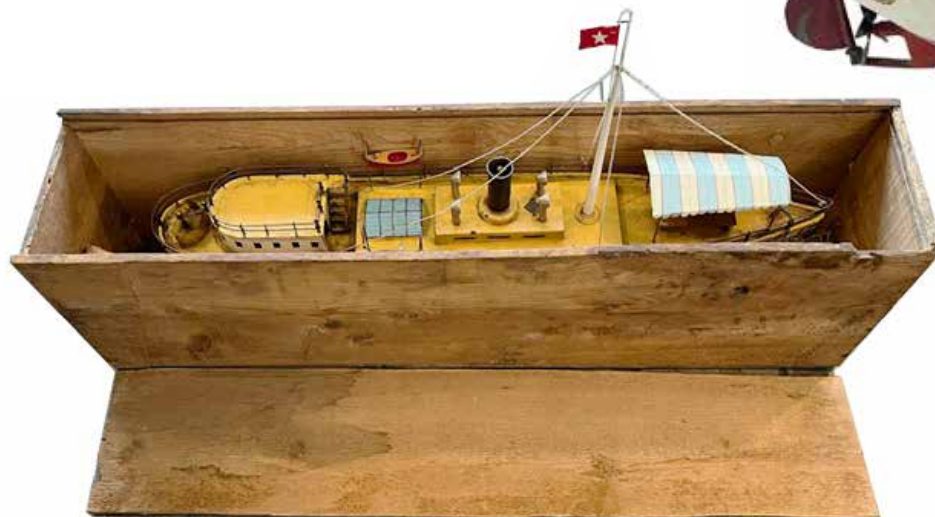
Manufactured in three sizes, this superb warship is the
largest and one of Bing's most successful. Complete in
all its details, clockwork powered, with original flags and
wheeled stand.



7 | "WHITE STAR"
PASSENGER RIVERBOAT
\$16,500

Gebruder Bing, Germany. Circa 1904. 26"
Condition very good.

Charming in its romance, this vibrant riverboat provides summer shade for original period composition passengers under the elegant prow canopy. Clockwork mechanism. With original shipping crate, packing and wheeled stand





8 | TORPEDO BOAT

\$8800

Gebrüder Bing, Germany. Circa 1898. 20"
Condition very good.

Among the rarest of all surviving boat examples, this clockwork powered warship harkens back to Bing's earliest turn of the century production. The subtle paint colors are imbued with a fine patina aside detailed gold stencil filigree. A gem.



9 | SIDE WHEELER
\$14,500

Gebruder Bing, Germany. Circa 1895 18"
Condition very fine.

This beautiful live steam paddle wheel riverboat has a painted wood veneer finish and elegantly painted bow. Extremely elegant and fine craftsmanship.



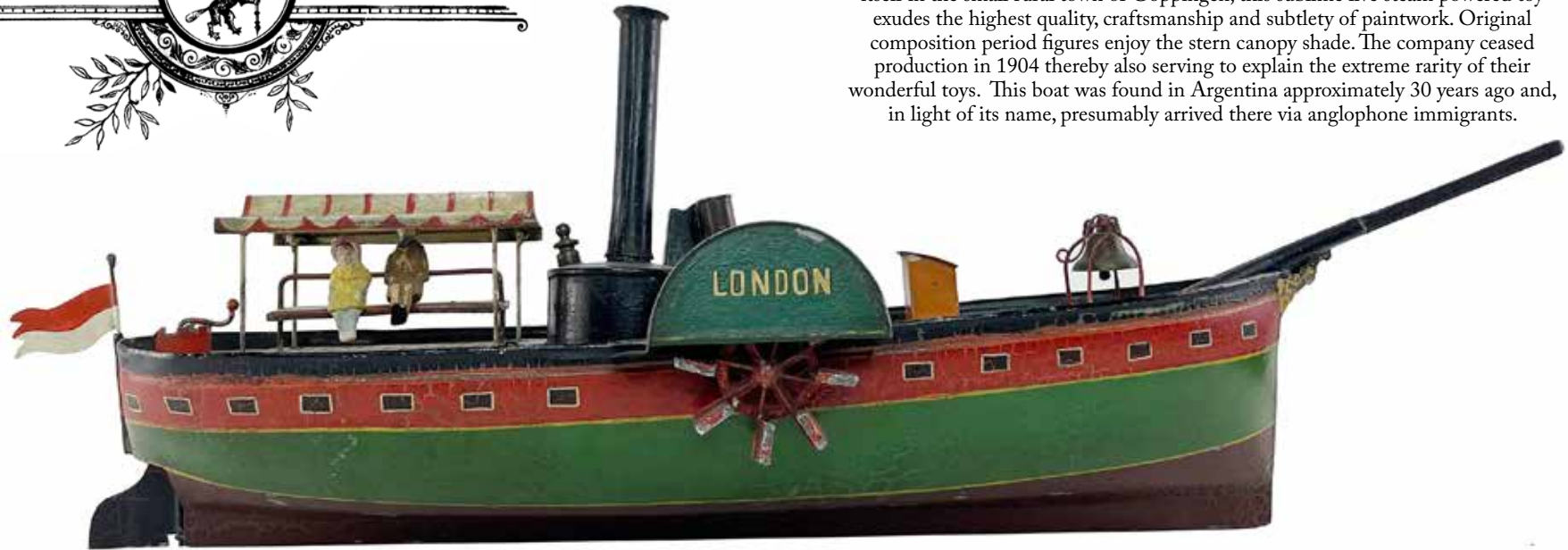


10 | SIDE WHEELER

\$19,500

Rock & Graner, Germany. Circa 1880. 19.5"
Condition excellent.

Manufactured by one of the earliest-known German toy makers which established itself in the small rural town of Goppingen, this sublime live steam powered toy exudes the highest quality, craftsmanship and subtlety of paintwork. Original composition period figures enjoy the stern canopy shade. The company ceased production in 1904 thereby also serving to explain the extreme rarity of their wonderful toys. This boat was found in Argentina approximately 30 years ago and, in light of its name, presumably arrived there via anglophone immigrants.





11 | RIVERBOAT

\$6500

Ernst Plank, Germany. Circa 1900. 16"
Condition very good.

By renowned Nuremberg maker Ernst Plank (founded 1866), this charming live steam powered riverboat, with elegant prow decoration, affords the elegant simplicity of early-period design. With box.





12 | RIVERBOAT
\$10,500

Barre. France. Circa 1875. 26" Condition pristine.
Henri Barre is among the very earliest and rarest of French toy manufacturers. This exceptionally rare hot air propulsion passenger boat, with superb deck and elegant hull styling, is from the famed Forbes Collection.





13 | MONITOR
\$18,500

Attributed to Barre. France. Circa 1870. 28"
Condition Very Fine.

Among the very earliest toy boats known to have survived. A piece of naval history in and of itself (a similar, if far lesser, example is in "la Musée de la Marine" in Paris), this important boat is driven by an astonishingly complex internal clockwork/air pressure piston mechanism that allowed the boat to submerge and resurface. A once-in-lifetime piece never previously seen by me in my career.



MÄRKLIN



Prämiiert
Dresden 1877.
II. Preis.

Georg Heyde

Prämiiert
Dresden 1879.
I. Preis.

**Zinn- und Blechspielwaarenfabrik
DRESDEN-A.**

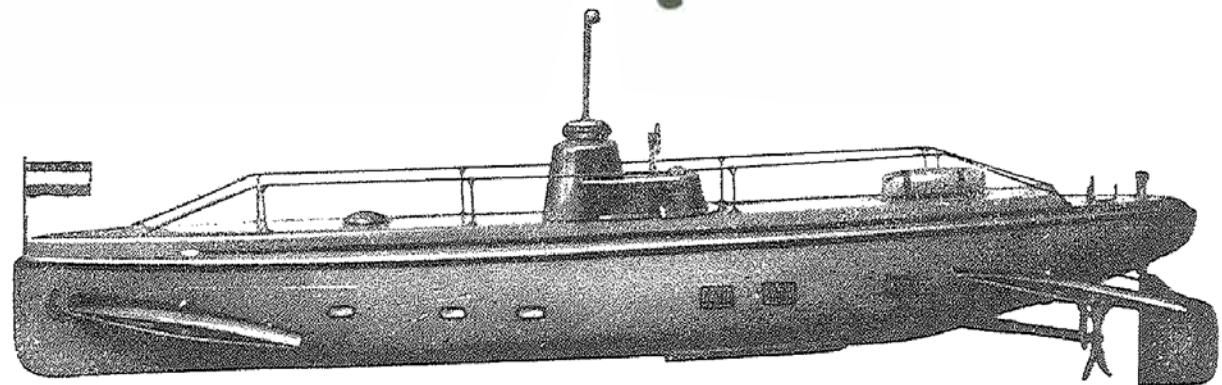
Spezialität:
Zerlegbare massive Zinncompositionsfiguren.
Blech-Casernen (gesetzlich geschützt).
Extrafeine, mittelfeine und ordinäre Figuren.
En-gros. Export.



14 | SUBMARINE \$8500

Gebrüder Märklin & Cie. Circa 1930. 16.5"
Condition mint.

The third largest of Märklin's famed series of submarines, this sublime clockwork powered example is striking in its sleek design.



5081
Unterseeboot



15 | SUBMARINE

\$10,500

Gebruder Bing, Germany. Circa 1908. 17 1/2"
Condition pristine.

In extremely rare large size, with French Dept store lithography still on its rudder, this magnificent submarine, with very appealing sculpting, likely never saw water. Working clockwork mechanism with handsome original key.





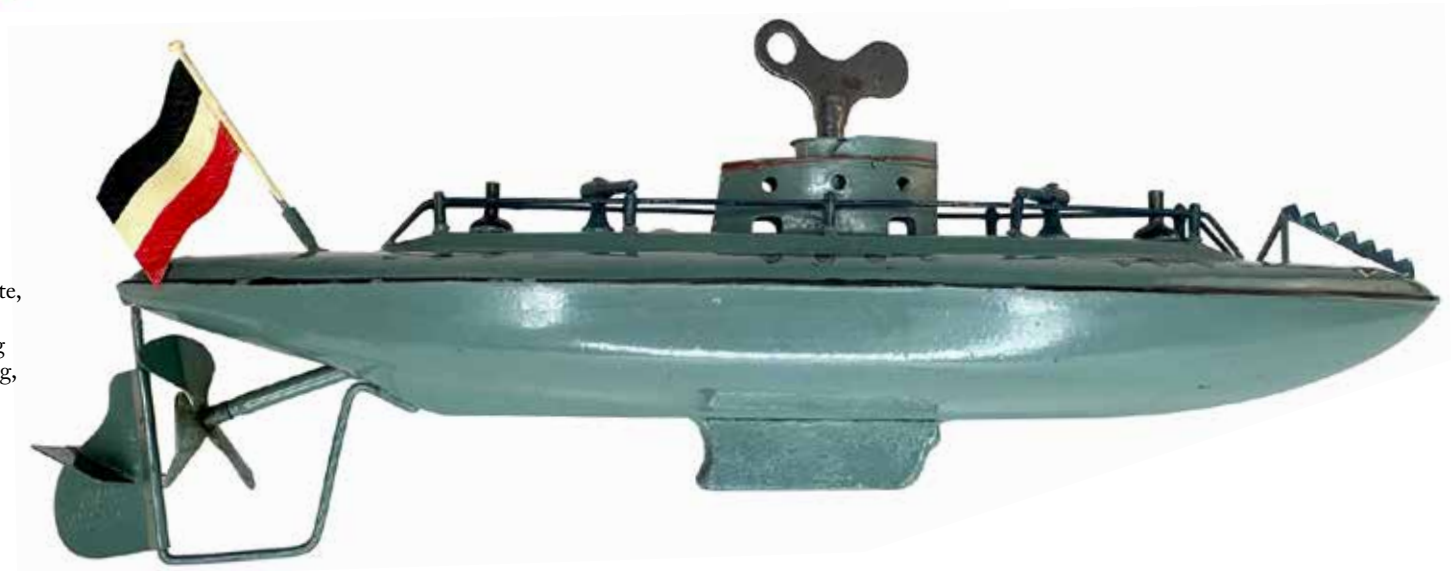
16 | OCEAN LINER
\$3800

Gebruder Bing, Germany. Circa 1930. 16.5"
Near perfect example of this extremely popular
clockwork ocean liner.

17 | SUBMARINE
\$1750

Fleischmann, Germany. Circa 1930. 10"
Condition pristine.

This extremely rare 10" submarine is in exquisite,
un-played with condition. In excellent box,
complete with period 1930s German packing
newspaper and excelsior. Clockwork is working,
with original key.





18 | HEYDE, KASERNE
\$6500

A wonderful addition to any collection, the Heyde “kaserne” was made in two sizes, this being the larger. The toy has hinges that fold open/closed such that when extended it measures 20” (ex-flags) x 10” x 3.5”. The interior and exterior windows are paper appliqués. The colorful, busy interior provides for rooms, stalls and staircase to the upper level. Condition very good.





19 | ALLGEYER, CRYSTAL PALACE (20mm)
\$5500

This highly important Allgeyer set is based on the cast iron and plate glass structure which housed the Great Exhibition of 1851.
 Queen Victoria opened the exhibition which was later to become the first of the World's Fair exhibitions featuring culture and industry.
 ?? pieces. Retains box top with vivid detail.
 Condition very good.





20 | HAFNER, BATTLE OF SEDAN (30mm)
\$2800

A large 100 plus piece set of flat figures depicting the Battle of Sedan, 1870, in a nice wooden box. Box very good (top of box has split and glue repair). Condition excellent.



21 | HARNISCH, CIRCUS MENAGERIE (40MM)

\$3600

Germany, circa 1870.

Attributed to the extremely early and rare maker Georg Harnisch of Hannover, this exceptional and colorful display features beasts of prey and a pachyderm-drawn lion wagon. In original wooden box. Condition excellent.





22 | SCHULTZ, FRENCH INFANTRY IN ACTION (30mm)
\$650

Flat figures. Circa 1900. 125 pieces. Box excellent. Condition excellent.



23 | SCHULTZ, BATTLE SET (30mm)
\$850

Very large flat set dating from 1890. 96 pieces. Box excellent. Condition excellent.



24 | HEINRICHSEN, ULANS (30mm)
\$275

Demi-round figures depicting the famed light cavalry unit. 10 pieces. In original box (fair with missing edges). Condition excellent.



25 | HEINRICHSEN, MANEUVERS (40MM)
\$850

Includes rare truck. 42 pieces. Condition excellent.



26 | HEINRICHSEN, GERMAN FRENCH BATTLE WORLD WAR I (40mm)
\$750

26 pieces. Box excellent. Condition excellent.



27 | SPENKUCH, RUSSO-JAPANESE WAR (40mm)

\$1200

21 colorful demi-round castings in original tie-in card. Firm original box. Condition Excellent.



28 | WOLLNER, ARTILLERY SET (40mm)

\$750

Made in Austria. 14 pieces in original box. Fine 40mm demi-round castings in Wollner's characteristic violet-pink backdrop. Condition Excellent.



29 | WOLLNER, PONTOON SECTION NO. 2 (40mm)

\$750

Made in Austria. Beautiful demi-round set of engineers and their pontoon wagon. 16 pieces plus bridging sections in original box. Circa 1890. Condition excellent.



30 | KRAUSE, FRANCO - PRUSSIAN WAR (35mm)

\$750

36 demi-round figures (2 rifle tips missing). In original box (wear to corners and edges). Very Good.





31 | SPENKUCH, RAILWAY FIGURES (45mm)
\$850

Lovely set of colorful, finely detailed, well cast flats of great appeal to the Train and Figure enthusiast alike. c. 1914. 13 pieces. Box excellent. Condition excellent.



32 | SPENKUCH, "FLIEGERABTEILUNG"
("AVIATION DEPARTMENT") (45mm)
\$1450

Boxed set of mint finely detailed, well cast flats, including airplanes and staff car. Rare, c.1914. Box excellent. Condition excellent.



33 | KRAUSE,
MILITARY REVIEW (40mm)
\$850

Very nice 12 piece demi-round set of figures. Beautiful presentation box. Circa 1890. Condition excellent.



34 | WOLLNER, PR LANCERS (40mm)
\$950

Made in Austria. Demi-round figures. Circa 1890. 25 pieces. Condition excellent. Box excellent.



**35 | HEYDE, SEA FORTRESSES WITH
DEFENDING ARMADA**

\$7400

Fine naval display, of exceptional rarity, contains two forts (6") with large German flags, two connecting sea wall sections, two steam driven tug boats (1.5") and fleet comprising 4 steam boats (3") and 3 sailing vessels (3.5"), all guns blazing! 22 pieces, inc 7 waves. Condition excellent.

36 | HEYDE SAILING ARMADA

\$2200

Contains 5 ships, the largest two ships measuring 4.25" in length, 1 ship 3.5" and 2 ships at 2.5" along with a near submerged submarine and 4 wave sections. 10 pieces. Condition good (some flaking to ships' sides).



**37 | HEYDE, SAILORS ADVANCING
AND FIRING (48mm)**

\$1550

A beautiful set of sailors and a wonderful addition to any Figured and/or Boat collection. 23 pieces in original box (Good/lid missing edges) Condition excellent.



38 | HEYDE, BOER WAR (48mm)
\$6500

Very dramatic action set of opposing armies at full gallop.
Contains one exceptional triplex figure along with ramparts and shrubbery.
19 pieces in original box. Condition excellent.



39 | HEYDE, WINTER HUNT (48mm)
\$12,500

A phenomenal and extremely charming set depicting life in the wilderness circa 1910. Retains the original snow covered base and box (very good). 50 pieces. Condition excellent.



40 | HEYDE, THE OLD GUARD (48mm)
\$ 5,500

Wonderful set of “toy” soldiers. These comical figures have expressive details unlike anything Heyde produced. One of my favorite sets.
Condition excellent.



41 | HEYDE, STREETS OF TOKYO (48mm)
\$22,500

Circa 1920. Phenomenal set depicting life in the streets of Tokyo at the turn of the century. 50 pieces. Near mint condition, still tied in the original box. Box excellent. Condition excellent.





42 | HEYDE, NATIVITY (54mm)
\$5500

Wonderful rare set depicting the birth of baby Jesus in cradle in the presence of the 3 Three Wise Men. Rare, circa 1910. 35 pieces. Unboxed. Condition excellent.



43 | HEYDE, ELEPHANT HUNT (48mm)
\$8500

One of this maker's most appealing sets and an enduring favorite. Colorful and charming with bright tropical vegetation. Circa 1910. Condition very good.



44 | HEYDE, GRECO-TURKISH WAR (54mm)
\$2100

Interesting set with numerous vignettes and farmhouse. 21 pieces. Condition very good.



45 | HEYDE, 1ST REGIMENT GRENADIERS (48mm)
\$450

15 pieces in original box. Condition very good.



46 | HEYDE, GUARD REGIMENT (54mm)
\$725

Circa 1910. 12 pieces
Box fair with edging gone. Condition excellent.



47 | HEYDE, ULANENS (48mm)
\$725

12 pieces in original box (fair/edging missing).
Circa 1910. Condition very good



48 | NORIS, GUARD DU CORPS (54mm)
\$900

Fine set in lovely, rare colorful box with fine lithography,
c. 1905. 6 pieces. Original box good with watermarks.
Condition excellent.



49 | NORIS, GERMAN CAVALRY (54mm)
\$900

Fine set in lovely, rare colorful box with fine lithography,
c. 1905. 6 pieces with original box. Box very good.
Condition excellent.





50 | HEYDE, U.S. CONTINENTAL ARMY (54mm)

\$2100

Seldom seen figures, c. 1910. 21 pieces.
Unboxed. Condition very good.



51 | HEYDE, LANDSKNECHT (54mm)

\$650

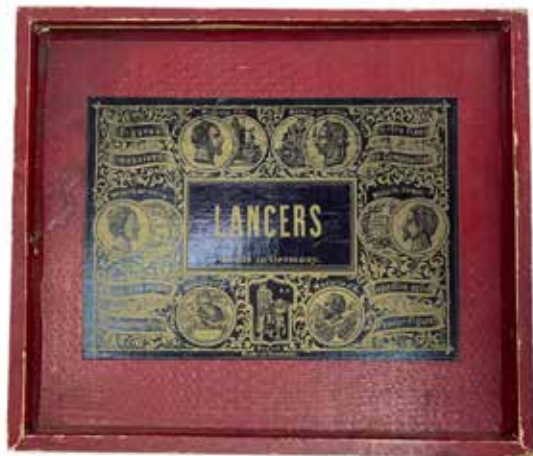
Colorful set of the German mercenary pikemen, c. 1910.
11 pieces. Unboxed. Condition very good. (One figure missing arm.)



52 | HEYDE, KNIGHTS' JOUST PENNANTS

\$400

Very rare and colorful set of four, c.1910. Condition excellent. Unboxed.



53 | NORIS, LANCERS (48mm)

\$1200

Very nice early figures in a pristine wooden box.
12 pieces including officers, trumpeters, and lancers.
1 missing lance tip. Box pristine. Condition excellent.



54 | NORIS, GEORGE V AND LORD KITCHNER (60mm)

\$1750

Box very good. Condition excellent.



55 | HEYDE, RAILWAY PERSONNEL AND PASSENGERS (50mm)

\$850

Nice civilian (5) and staff (5) figures tied in the
original box. 10 pieces. Box excellent.
Condition excellent.



56 | HEYDE-FOR-MARKLIN HORSE DRAWN
ARTILLERY (60mm)
\$2800

Team of horses pulling limber and field gun with 2 seated gunners. Circa 1912.
6 pieces. Condition very good.



57 | SCHELLER LARGE-SCALE PRUSSIAN PARADE (65mm)
\$5700

Attributed to early production of Carl Scheller, these extremely rare marching Prussians are of the highest quality sculpting and paintwork and have a lovely patina.
c. 1890. 16 pieces. Condition excellent.



C. Ammon, Zinnfiguren-Fabrik
 Nürnberg, Schlotfegerg. 9

— Letzte Neuheit: —

Vorposten ==
 == **im Feuer**

D. R. G. M. No. 3006

Hervorragende Aufmachungen.
 Feinste Ausführung. Muster zu Diensten



58 | AMMON, MUSIC BAND OF THE INFANTRY (60mm)

\$7400

Exquisite figures uniquely crafted in the form of co-joined hollow castings, by rare maker Christian Ammon. Wonderfully executed, of exceptional elegance, in magnificent wood box (gold stenciling, hook clasps, silk interior). A Treasure. c. 1880. Condition Excellent.



59 | NORIS, CAVALRY (75mm)
\$4500

Ceremonious and elegant c. 1905. 7 pieces.
Condition excellent.



Geb Brüder Heinrich
Fürth i. B. Kgl. bayr. Hofl.
Beisoldatenfabrik
NORIS

Stets Neuheiten.
Musterlager: Berlin S. 42.
Oranienstr. 137 A.
Zu den Messen in Leipzig:
Peterstrasse 44,
(Gross. Heiter) Laden rechts.



61 | NORIS, LARGE SCALE HUSSARS (80mm)
\$8000

An exquisite set of 10 large scale Hussars. Circa 1890.
Condition Excellent.



60 | NORIS, BELGIAN INFANTRY (75mm)
\$2600

Marching at the slope. Stately and impressive, very colorful, c. 1905.
10 pieces. Condition excellent (missing most bayonet tips and 4 plumes).



62 | HEINRICH, GUARDS (65mm)
\$950

Marching at the Slope. 9 pieces.
Box retains excellent label although structure of the box is poor.
Condition excellent.

63 | NORIS, INFANTRY
(75mm)
\$7500

Beautiful figures with exquisite mounted officer. Circa 1885.
19 pieces. Wooden box good.
Condition excellent.



64 | NORIS, LIFEGUARDS (70mm)
\$1900

Captain, bugler and 5 troopers, well detailed in impressive wood box. Rare, c.1890.
7 pieces. Box excellent. Condition very good.



65 | NORIS, LARGE SCALE INFANTRY (75mm)
\$6500

An exceptional set with wasp waist figures. Officer sports large mutton chops.
Includes trumpeter and flag bearer. 12 pieces. Fine lithographed label on lid although box itself poor.
Condition excellent.



66 | NORIS, PRUSSIAN CUIRASSIERS (80mm)
\$12,500

Phenomenal large-scale set depicting the epitome of German craftsmanship. The paintwork is outstanding on this 14 piece set. c. 1905. Condition excellent.



67 | NORIS, GARDE DU CORP (80mm)
\$750

A high luster. Condition excellent.



68 | HEYDE, FREDERICK II
(THE GREAT) HOLDING CANE (75mm)
\$1100

With separately cast reins and saddle.
Condition excellent.



69 | DORFLER, HESSIANS LARGE SCALE (80mm)
\$1100

Famed for its rare and unusual distinctive castings, a lovely set of marching Hessians by the rare maker, Hans Dorfler of Fürth c. 1906 Condition very good.



71 | NORIS, INFANTRY AT ATTENTION (90mm)
\$4400

Wonderful boxed set of extremely rare, solid cast figures. Rare, c. 1890. 6 pieces. Original box base and tie card, lid is a fine reproduction. Condition excellent.



70 | HAFFNER, BELGIAN INFANTRY AT ATTENTION (90mm)
\$6500

Very impressive set of twelve solid cast figures complete in lovely oversize, crisp box from one of the most prestigious and rarest of early German makers, c. 1900. Condition very good.



72 | HEINRICH,
ROYAL HORSE GUARDS (80mm)
\$11,500

Exceptional set comprising 17 mounted figures in original three-tier wood box with colorful label. c. 1900. Condition Excellent.

J. HAFFNER

in

FÜRTH

bei NÜRNBERG in Bayern.



Zinnfiguren-Fabrik.

Das Geschäft erzeugt immerwährend das Neueste, hauptsächlich Specialitäten in den **feinen massiven** und **feinen flachen** Zinnfiguren.



73 | HAFFNER, OFFICERS OF THE GENERAL STAFF (80mm)

\$4500

With exquisite detailing to the figures and finely cast. c. 1925
Condition very good.



74 | HEYDE, TOURNAMENT KNIGHTS (80mm)
\$8500

Vibrantly painted, with 5 at full gallop and 5 at the halt. Exceptional castings with moveable face visor and horses adorned with bright plumes. c. 1910 Condition pristine.



75 | HEYDE, BUFFALO HUNT (80mm)
\$6500

Wonderful set depicting 9 N. American Indians (bow & arrow, club, rifle) on galloping horse in pursuit of 3 prey c. 1910 Condition excellent.



**76 | NORIS, HUSSAR
(120mm)
\$3600**

Monumental solid cast figure.
Magnificent and extremely rare.
c. 1890 Condition excellent.



**77 | HEYDE, COLDSTREAM GUARDS
(140mm)
\$2600**

Very impressive solid cast pair standing at ease.
Separately cast rifle, c. 1910
Excellent condition.



**78 | HEYDE, FIELD MARSHALL
VON HINDENBURG (135mm)
\$1400**

Superb example of the famed leader. c. 1925
Condition excellent.



**79 | HEYDE, "SOLDIER (PRUSSIAN)
AT THE SHOOT" (120mm)
\$2250**

Fabulous solid cast marksman. Each rifle is separately
cast (spring-loaded tin barrel as fires an actual
projectile) as can be raised/lowered to/from eye level.
c. 1908 Condition excellent.



**80 | HEYDE, "SOLDIER
(U.S. INFANTRY) AT THE SHOOT"
(120mm)
\$2250**

Fabulous solid cast marksman. Each rifle is separately
cast (spring-loaded tin barrel as fires an actual
projectile) as can be raised/lowered to/from
eye level. c. 1908 Condition excellent.



**81 | HEYDE, MARKSMAN
(120mm)
\$1900**

Very rare, superb solid cast German
infantryman with dictum scroll along
base. c. 1905 Condition very good.



**82 | HEYDE, HIGHLANDER
(120mm)
\$1200**

Monumental Scotsman (120mm)
marching at the slope. c. 1910
Condition very good.



83 | HEYDE, U.S. INFANTRY (140mm)
\$3500

Impeccably painted figures marching at the slope. c. 1910
Condition pristine.



84 | HEYDE, U.S. INFANTRY (120mm)
\$11,000

Superb set of extremely rare hollow cast troops in a number of poses, c. 1905
Condition very good.



85 | HEYDE, HUSSARS (120mm)
\$18,500

Majestic “trophy” set. Magnificently plumed and finely painted. c. 1908
Condition excellent.



86 | SET OF CIVILIAN FIGURES (100mm)
\$2200

In treasured condition, this remarkably detailed hand-carved set of bright, finely painted figures is a testament to mid-C19th Germanic craftsmanship. Wonderful patina. c.1860.
Condition Excellent.



87 | HEYDE, DUTCH FARMING FAMILY (120mm)
\$1300

Fine, charming sold cast figures, comprising parents, smoking twins (duplex), family of ducklings (duplex) and stalk. c. 1910
Excellent Condition.



88 | FV, FRENCH INFANTRY (80mm)
\$4700

Wonderfully imaginative tin figures, on wheels, from early French maker, Jules Favire. Magnificent wood box opens vertically to present lithographed depiction of Prussians being defeated on the field. c. 1870
Condition Excellent.





89 | CBG MIGNOT,
"JARDIN D'ACCLIMATATION"
\$6500

Exceptional 4 tiered display set depicting Paris's Jardin d'Acclimatation as established in 1860 by Napoleon and his wife. Demi-round figures. c. 1920. Box excellent. Condition excellent.





90 | ELASTOLIN, MOUNTIE
(140mm)
\$650

Composition. Rare. c. 1930
Condition Excellent.



91 | TIPPLE TOPPLE, MENAGERIE
\$1600

Composition. Rare set in nice original box. c. 1930. Condition very good.



92 | FRANCHAL, NAVAL BAND (65mm)
\$2800

In part due to scarcity of post-war resources, some French manufacturers thought to manufacture figures in aluminium. A phenomenal display in stand-up display box. c. 1950 Condition Good.



93 | CASANELLAS, BULL FIGHT (40mm)
\$1250

Sometimes referred to informally as "Spanish Heyde", an important, rare and colorful corrida by Baldomero Casanellas. Well-crafted, elegant figures. c. 1930 Condition Excellent.



94 | BRITAINS SET #8 4TH QUEEN'S OWN HUSSARS
\$2800

Near perfect example of this very early set. c. 1908. Condition near mint, box excellent.



95 | BRITAINS SET #12 11th HUSSARS
\$8500

What an exceptional set! First version pony horse with rearing officer. The steed is decorated with an exquisite throat plume. This is the finest example of this set I have ever handled. It represents the very finest of Britains production. Condition Near Mint. box excellent.



96 | BRITIANS #26 BOER INFANTRY.
\$4500

Near mint oval base set with paper labels.
Exquisite patina. Condition near mint, box excellent.



97 | BRITIANS SET #35 ROYAL MARINE ARTILLERY
\$4500

Incredible example of this very early set. Oval base with valise packs.
Circa 1897 First version. This has exceptional luster with beautiful white and gold finishes. Condition near mint, box excellent



98 | BRITAINS #39 ROYAL HORSE ARTILLERY
\$6500

What a fabulous horse team. Superb luster and patina on this near mint 1st version gun team. Rear mounted gunners and horses with heavy horse collars. One of the finest examples of this set known. Condition near mint, box excellent.



99 | BRITAINS #144 ROYAL FIELD ARTILLERY
\$5500

Exquisite first version set. Rear mounted gunners, heavy horse collars and officer with drawn sword. Wonderful patina on this near mint horse team. Condition near mint, box excellent.



**100 | BRITAINS #91 UNITED STATES
INFANTRY**
\$6500

Fabulous first version set. Montana hat with oval base and officer. Superb luster and patina. Condition near mint, box excellent, adorned with writing from Ernest Hilary. I have handled a number of these "Hilary" sets. It has not been determined if this done by the original owner or if done by a relative for the deceased "Hilary". The later I believe to be true. Regardless the "Hilary" sets have all been some of the most exceptional 1st version sets I have ever handled.

**101 | BRITAINS SET # 100 LIFEGUARD BAND
IN BLUE TUNICS**
\$7500

First version set with blue tunics and fixed arms.
Extremely rare. This set is painted exceptionally well
with great detail and beautifully decorated spotted ponies.
Condition pristine, box excellent.





102 | BRITAINS NO. 321 DRUM & FIFE BAND OF THE LINE
\$1800

Pre war. 17 pieces. Condition excellent. Box excellent.



103 | BRITAINS SET NO. 1818 ROYAL FUSILIERS, HUSSARS
\$4800

and Scots Guards. An extremely rare, 2 tiered display set.
Circa 1939. 26 pieces. Condition near mint. Box excellent.



104 | BRITAINS #168 CIVILIANS
\$2800

First version with women in bottle dresses.
Condition near mint, box excellent.



105 | BRITAINS COCO CUBS
\$450

Very nice grouping of the beloved Britains figures.
18 pieces. Condition excellent.



106 | BRITAINS NO. 1321 CIVILIAN AUTOGIRO
\$4200

Condition pristine. Box pristine.



107 | MICKEYMOUSE & FRIENDS #1645
\$10,500

Britains, London England. Circa 1938.

One of the most iconic and sought after sets Britains ever produced.
This rare set is in pristine condition and comes with an exquisitely done reproduction box.



108 | BRITAINS #1398 OPEN TWO-SEATER
\$4500

Exceptional cream and black sports model. Very rare.
Condition pristine, box excellent.



109 | BRITAINS #1398 OPEN TWO-SEATER
\$6500

What a beautiful sky blue and violet sports car. Exceptionally rare. One of the finest sports cars known. A once in a lifetime car. Condition near mint, box excellent.



110 | BRITAINS #1399 TWO-SEATER COUPE
\$4500

Wonderful cream and black two tone coupe.
Condition pristine, box excellent.



111 | BRITAINS #1399 TWO-SEATER COUPE
\$6000

Fabulous two tone green and black coupe. Outstanding patina and luster.
Condition near mint. Box excellent.

