



Bringing wonderful, beautiful, fresh to the market and enchanting toys and soldiers to collectors--this has been my goal since 1987. This year I am very proud of the assortment and diversity being offered. As you know, many of the shows are no more and the vast majority of desirable items are finding their way to the auction houses. However, my 36 years of friendships and dealings with my network of contacts still produces some wonderful fruit! Enjoy this offering and, if there is a special piece that you think would enhance your collection, please contact one of us today. It might be gone tomorrow!

Sincerely,
Ray Haradin

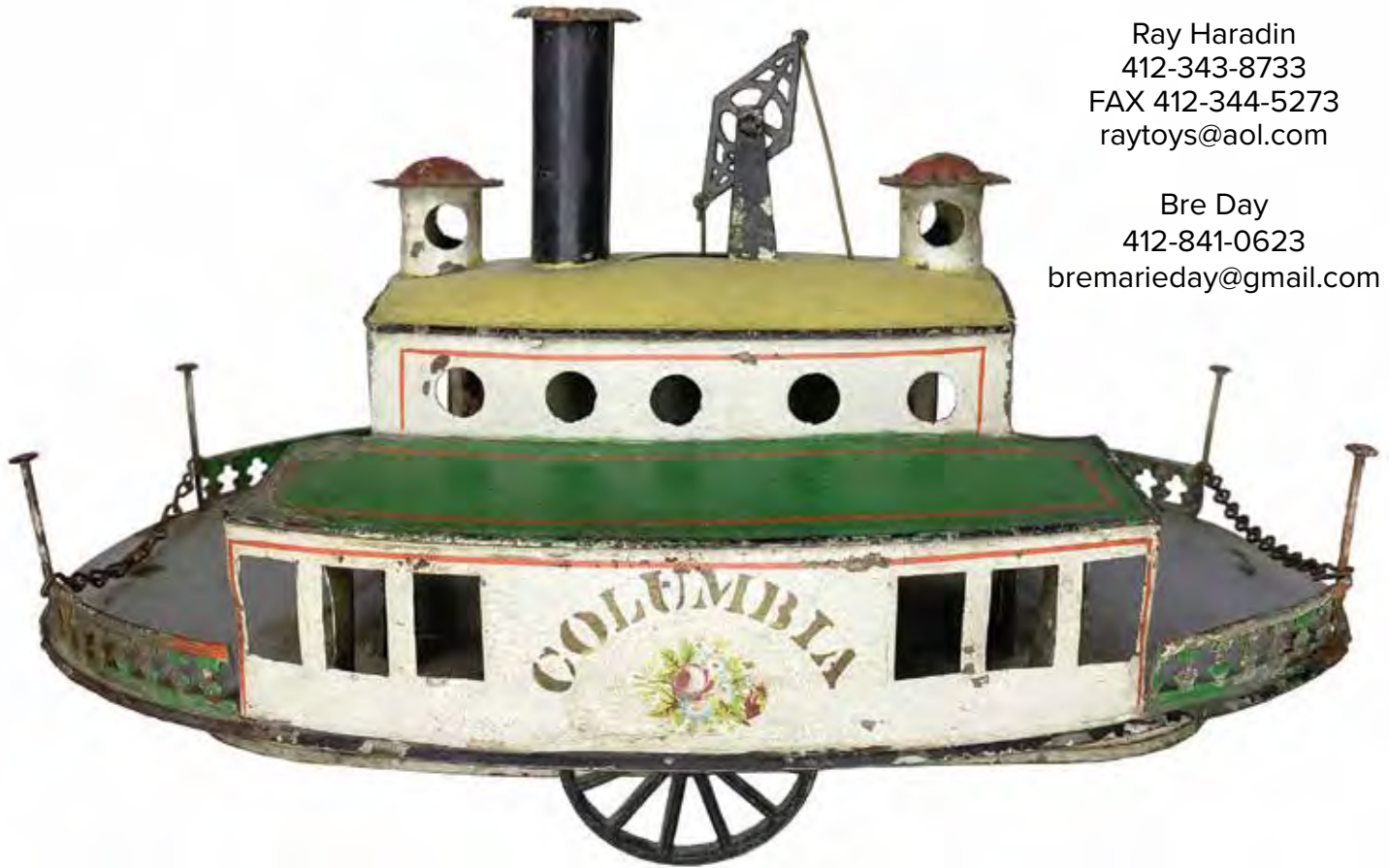


TM

RAY HARADIN
Toys of Yesteryear
1039 Lakemont Drive
Pittsburgh, PA 15243-1817
(412) 343-8733
Fax: (412) 344-5273
email: raytoys@aol.com
raytoys.com

Ray Haradin
412-343-8733
FAX 412-344-5273
raytoys@aol.com

Bre Day
412-841-0623
bremarieday@gmail.com



Consultant
Leon Weiss
917-991-7352
leonweiss@me.com

Consultant
Steven Weiss
212-729-0011
sweiss57@me.com



FOUILLE FIGURES



1 | HUSSAR 1ST REGIMENT 1815

\$900

Made by Charles Fouille. Signed on Base.
Sold at Au Nain Bleu in Paris, France. 7 inches in height.
Condition Excellent.



2 | MARINE GUARD OFFICER 1ST EMPIRE

\$1200

Made by Charles Fouille. Paris France Circa 1950.
8 inches in height. With Original Box. Signed on Base.
Condition Excellent.



3 | FUSILIER OF THE GRENADIER GUARD

\$1200

Made by Charles Fouille. Paris, France.
Circa 1950. 8 inches in height.
With Original Box. Signed on Base.
Condition Excellent.



4 | DRAGON OF THE LINE 28TH REGIMENT 1809

\$1100

Made by Charles Fouille. Paris, France.
Circa 1950. 8 inches in height.
With Original Box. Signed on Base.
Condition Excellent.



5 | 1ST EMPIRE ARTILLERY OF THE GUARD

\$900

Made by Charles Fouille. Paris, France.
Circa 1950. With Original Box.
Signed on Base. 8 inches in height.
Condition Excellent.



6 | MOUNTED CUIRASSIER

\$2500

Made by Charles Fouille. Paris, France.
Circa 1950. 9 1/2 inches in height.

Exquisite large scale figure with
exceptional detailing. Signed on base.
With Original Box.
Condition Near Mint.



7 | MOUNTED CUIRASSIER OFFICER

\$2800

Made by Charles Fouille. Paris, France.

Circa 1950. 10 1/2 inches in height.

Exquisite Example. With Standard and
Original Box. Signed on Base.

Condition Near Mint.

≡ RIFFET FIGURES ≡



8 | 1ST EMPIRE GRENADEIER A CHEVAL DE LA GARDE
\$2000

Made by Marcel Riffet. Paris, France. Circa 1960. Signed on base.
13 1/2 inches to the top of standard. Excellent.

9 | MURAT
\$2100

Made by Marcel Riffet. Paris, France.
Circa 1960. Signed on base.
11 inches to the top of plume.
Excellent.

10 | MORTIER
\$1600

Made by Marcel Riffet. Paris, France.
Circa 1960. Signed on base.
8 1/2 inches high. With Original Box.
Near Mint.





11 | GENDARMES DU ROY 1745

\$950

Made by Marcel Riffet. Paris, France.
Circa 1960. Signed on base.
7 3/4 inches high. Near Mint.



12 | LAFAYETTE

\$450

Made by Marcel Riffet. Paris, France.
Circa 1960. Signed on base. 8 inches high.
With Original Box.
Very Good with chipping to face.



13 | CANTINIERE

\$550

Made by Marcel Riffet. Paris, France.
Circa 1960. Signed on base. 7 3/4 inches high.
With Original Box. Excellent.



14 | CAVALERIE 1786

\$750

Made by Marcel Riffet. Paris, France.
Circa 1960. Signed on base. 7 3/4 inches high.
With Original Box. Excellent.



15 | FRENCH OFFICERS OF THE GENERAL STAFF

\$5600

Made by NORIS/Gerbeau- CBG. Furth Germany and Paris, France. 55mm. Circa 1878. Depicting 9 French Staff Officers. A highly unusual set demonstrating the link between the early German and French Manufacturers. See Old Toy Soldier V46 #4. This particular set is believed to show figures manufactured by NORIS packaged by early CBG co-founder Gerbeau. A highly important set. With Original Box. 9 Pieces. Condition Excellent.



16 | ZOUAVES FIRING

\$3200

Made by Gerbeau / CBG. Paris, France. 55mm. Circa 1920s. 30 Pieces Near Mint. A bright and colorful set of Zouaves firing and advancing with Officer, Flagbearer and Trumpeter. Originally Tied in Original Box.

GERMAN GUNS



17 | ARMORED RAIL GUN
\$5200

Made by Gebruder Marklin Company. Germany.
Circa 1910. Measures 5 inches in height.
One of the rarest of all Marklin guns. Excellent Condition.



18 | LARGE COASTAL GUN
\$4000

Made by Gebruder Marklin Company. Germany.
Circa 1920. Measures 9 inches in height.
Beautiful dark green finish. Excellent Condition.



19 | LARGE EARLY COASTAL GUN
\$7000

Made by Gebruder Marklin. Germany. Circa 1910.
Measures 9 inches in height. A very early version of this sought after gun finished in navy blue with brown base and red highlights.
Contains an extremely rare set of four artillery men made by Heyde loading the gun. Excellent Condition.



20 | ARMOURD COASTAL GUN
\$3800

Made by Bing. Germany Circa 1906.
Only a handful of this wonderfully designed coastal gun have survived. The armored shield is removable. Very rare. Measures 10 1/2 inches in length. Excellent Condition.

GERMAN TOY SOLDIERS



21 | INFANTRY ON PARADE

\$4500

Made by J.A.A. Holtz Hamburg Germany Circa 1860. 48 Pieces. 75mm.
A very rare and seldom seen manufacturer of flats from the early years of
figure production. Set is from the original family. Condition Excellent.



22 | MEDIEVAL KNIGHTS

\$4500

Made by Besold. Nuremberg Germany.
80mm. Circa 1860. 9 Pieces. Incredibly
detailed articulated Medieval Knights made
by very early figure manufacture. Contained
in period wooden box. Condition Excellent.



23 | NAVAL WAR FLEET

\$6800

Made by Georg Heyde. Dresden Germany. 18 Pieces. Circa 1900. Contains 6 named transitional war ships with sails and steam driven. Names include Thunderer, Nelson, Victoria, Alice and Austria. Very unusual with the decks lined with miniature sailors. Largest ship measures 6 inches in length. 9 ships and 9 sets of waves. Condition Excellent.



24 | DUTCH AND FRENCH TROOPS

\$1200

Made by Johann Haffner. Furth Germany
Circa 1850. 30mm 53 Pieces. With Original Wooden Box.
Condition Excellent.



25 | FRENCH ENCAMPMENT

\$2400

Made by Allgeyer. Furth Germany Circa 1870. 30 mm 72 Pieces. With Original Wooden Box. Wonderful demiround set of a French Encampment in an exquisite wooden partitioned box. With bright and vibrant label marked PFS Paris Depose. Interior of box stamped Magasin des Enfants Passage de L'opra Paris Jouet et Jeux. Condition Excellent.



26 | FRENCH ARMY CAMP OF ORIZABA

\$6800

Made by Christian Ammon, Nuremberg Germany. Circa 1861. 30mm Approximately 400 figures. The largest most spectacular Ammon set we have handled. This large display depicts the French Army in the Mexican camp of Orizaba. With beautifully illustrated label. Condition Excellent.



27 | **ULTRA RARE MONUMENTAL US CAVALRY & INFANTRY**
\$22500

Made by Georg Heyde, Dresden Germany. Circa 1860. 200mm.
18 Pieces. One of the earliest sets of Heyde we have ever handled
including two Mounted Officers on large scale horseback measuring
200mm in height. Contains Troopers, Officers buglers.
Missing one rifle and standard. A true museum item.
Condition Very Good.





28 | 7TH REGIMENT COLOR PARTY
\$3500

Made by NORIS. Dresden Germany.
Circa 1905. 100mm 3 Pieces
Terrific figures with exquisite patina. 3 Pieces.
Condition Excellent.



29 | NODDING REGIMENTAL OFFICERS
\$4400

Made by Georg Heyde. Dresden Germany.
Circa 1910. 110mm. 3 Pieces Including General, Hussar and
Lancer. Two contained in their original boxes.
Condition Very Good.



**30 | BRITISH CAMEL CORPS
MOUNTED OFFICER**
\$750

Made by Georg Heyde. Dresden, Germany.
Circa 1920. 80mm figure. Condition Excellent.



**31 | EARLY MONUMENTAL SCOTS GREYS
MOUNTED OFFICER**
\$3800

Made by NORIS Germany 120mm. Circa 1890. Early paint.
Condition Excellent.



32 | LARGE SCALE ARABS

\$6500

Made by Georg Heyde. Dresden Germany. 90mm. Circa 1910 6 Pieces. Complete as sold in a set. Figures with lustrous patina. Condition Excellent.



33 | NORTH AMERICAN MOUNTED INDIANS

\$3200

Made by Georg Heyde. Dresden Germany 80mm. Circa 1920. 12 Pieces. Complete as sold in a set. Beautiful grouping of Indians Mounted on Horseback with rifles, hatchets and spears. With detachable saddles. Condition Excellent.



34 | THE RENDERING HOMAGE OF INDIAN PRINCES SET #1334
\$19500

Made by Georg Heyde. Dresden Germany. Circa 1911. Size No. 2 52 Pieces.
 Wonderful Delhi Durbar Set. By far the largest we have ever handled. Including
 4 ornamental elephants, 3 acrobats on horseback, two stilt walkers and a 10 piece band.
 Contained in its original box. Condition Figures Excellent, Box Good.





35 | PROCESSION OF GERMANICUS

\$8500

Heyde, Germany. Circa 1920. 48 Pieces . Size No. 2 One of Heyde's most popular sets The Procession of Germanicus Returning to Rome. Including 4 chariots and an oxen cart. Germanicus mounted on composition elephant. Excellent.



36 | ALEXANDER THE GREAT

\$18500

Made by Georg Heyde Dresden Germany. Circa 1920. 52 Pieces. Size No. 2. One of the most desirable of all Heyde sets. The elaborately decorated war elephant leads the way for Alexanders army. Exquisite Boxed Set Originally Tied. Condition Figures Excellent, Box Good.



37 | BUFFALO BILL CAVALCADE

\$18500

Made by Georg Heyde. Dresden Germany. Circa 1920. 60 Pieces. Size No. 2
Tremendous boxed example of Buffalo Bill's Tour of Europe containing troops
from throughout the world. Condition Figures Excellent, Box Very Good.





38 | OLD FRITZ
\$2100

Made by Georg Heyde. Dresden Germany. Circa 1920. 23 Pieces.
Size No. 2 With Original Box. Condition Excellent.



39 | TURKISH INFANTRY
\$775

Made by Georg Heyde. Dresden Germany. Circa 1920. Size No. 2
17 Pieces With Original Box. Condition Excellent.



40 | THE EXPLORATION ARCTIC SET

\$6500

Made by Georg Heyde. Dresden Germany Circa 1920. 32 Pieces. Size No. 2. Heyde's rendition of the expedition of the arctic containing some very rare figures. The set includes snow-covered trees and shrubs, large ice-covered rock, explorers with tools and supplies, rare vignette with two explorers and surveying instruments, 2 sleds with dogs, explorer paddling in kayak, polar bears including the standing bear, U.S. flag, 2 tents and a penguin. Condition Near Mint.



41 | CHINESE FIRING ('CHINESES')

\$6400

Made by NORIS Germany 70mm Circa 1900.
Complete set in magnificent original blood red wooden box.
Very early figures. 23 pieces with lustrous patina.
Condition Excellent.

BRITAINS TOY SOLDIERS



42 | BOER INFANTRY SET #26
\$1800

Made by Britains. London, England. Circa 1900. 8 Pieces. 1st Version Marching at Slope.
No Box. Lovely patina. Condition Near Mint.



43 | YORK AND LANCASTER REGIMENT SET #96
\$1800

Made by Britains. London, England. Circa 1898. 8 Pieces.
1st Version in Khaki with Pigeon Chests. No Box. Condition Excellent.



44 | GORDON HIGHLANDERS
SET #77
\$1800

Made by Britains. London, England.
Circa 1897. 8 Pieces. 1st Version Plug
Handed. In Original Battle Honors Box.
Including 2 pipers. Condition Excellent.

45 | US INFANTRY SET #91
\$2500

Made by Britains. London, England.
Circa 1900. 8 Pieces. 1st Version with
White Spiked Helmets. With Original
Box. Condition Figures Excellent,
Box Very Good.





**46 | SPANISH CAVALRY
SET #218**
\$1500

Made by Britains. London, England.
Circa 1930. 5 Pieces. With Original
Box. Condition Near Mint.

**47 | BULGARIAN INFANTRY
SET #172**
\$950

Made by Britains. London, England.
Circa 1930. 8 Pieces. Marching at Trail
with Officer. With Original Box.
Condition Excellent.



48 | 12TH LANCERS SET #128
\$1400

Made by Britains. London, England.
Circa 1920. 5 Pieces. Pony Horse Version.
Condition Near Mint.



49 | MOUNTAIN ARTILLERY SET #28
\$1500

Made by Britains. London, England. Circa 1885.
11 Pieces. 1st Version Mountain Artillery with Tan
Mules. In Early Partitioned Box. Including complete
field gun and original packing material. In Original
Box. Condition Excellent.





50 | PARIS OFFICE MATELOTS SET #143

\$1700

Made by Britains Paris France. Circa 1915 8 Pieces. Rare Paris Office Figures Made by Britains. London, England. Base embossed Depose. Condition Very Good.



51 | THE EAST YORKSHIRE REGIMENT SET #1557

\$1250

Made by Britains London England. Circa 1940 8 Pieces In Original box. Condition Excellent.

52 | CAMERONIAN HIGHLANDERS SET #1913

\$1600

Made by Britains. London, England. Circa 1940. 7 Pieces. Armies of the World Box Auchinleck Series Label. Condition Excellent.



53 | ROYAL MARINE LIGHT INFANTRY SET #1620

\$1200

Made by Britains. London, England. Circa 1938. 8 Pieces in Original Box. Condition Figures Excellent, Box Very Good.



54 | RARE KING EDWARD STATE COACH OF ENGLAND SET #1470
\$4200

Britains. London, England. Circa 1936. 10 Pieces. A rare variation of Britains State Coach for the Coronation of Edward VIII. Very limited production due to him abdicating the throne. Condition Excellent.



55 | NOAH'S ARK
\$1750

Made by Elastolin. Germany. Circa 1938. 31 Pieces. Beautifully detailed medium sized Noah's Ark in exquisite condition. Contain very rare Noah and his wife and 14 pair of animals with original ramp. 18 inches in length. Condition Excellent.



56 | THE DEER HUNT

\$8500

Erzerberger figures sold by Giroux. Germany/France. Circa 1850. 85mm
23 Pieces. Very early Hunting Set with original box. An extreme rarity to
be found in this type of condition. Condition Excellent.





57 | COLUMBIA FERRY BOAT

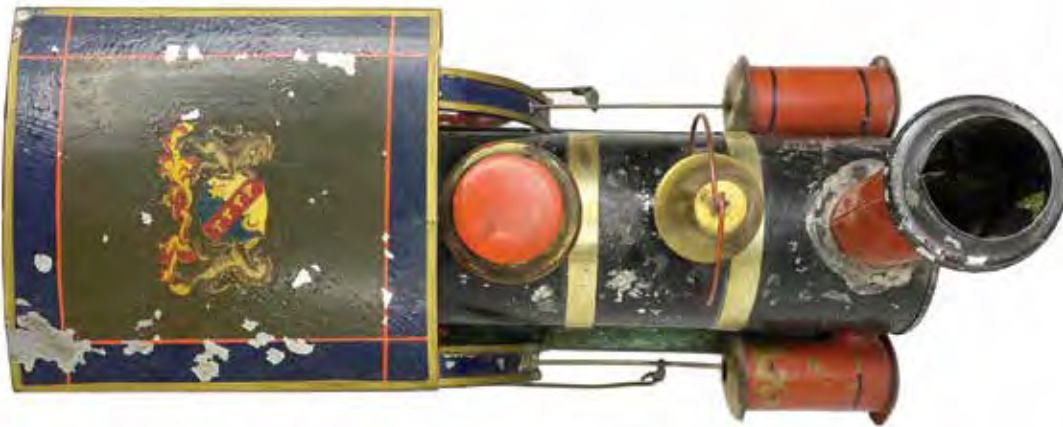
\$38000

Made by George Brown. Forestville, Connecticut. Circa 1870.
13 1/2 inches in length. This Ferry Boat is completely original and highly desirable. It is one of the finest known examples.
Condition Excellent.



58 | WHISTLER /CLOCKWORK LOCOMOTIVE
\$20000

Made by Ives Blakeslee and Company. Bridgeport, Connecticut. Circa 1876. Measures 13 inches in length. This elaborately decorated and vibrantly colored clockwork locomotive would be the prize of any collection. 100% original with original cardboard box. Condition Excellent.





**59 | LABRADOR WITH ARTICULATED HEAD
PLATFORM TOY**
\$5500

Made by James Fallows. Philadelphia, Pennsylvania. Circa 1885. Measures 9 inches in length. Outstanding condition on this black Labrador retriever toy. Exquisite highlighting on the dog's coat. When this toy is pulled across the floor he moves his head to the left.
Near Mint Condition.



**60 | LARGE SINGLE HORSE
CLOCKWORK SULKY**
\$16000

Made by George Brown. Forestville, Connecticut. Circa 1875. Measures 12 inches in length. Beautiful lustrous patina on this very delicately designed toy. 100% original.
Excellent Condition.

🌀 CLOCKWORK TOYS 🌀

61 | GIRL ON DECORATED SWING CLOCKWORK TOY

\$12000

Made by Ives Blakeslee and Company, Bridgeport, Connecticut. This vibrantly decorated toy is the fully painted version with beautiful gold and gray highlights and decorative counterweight yellow ball. The clockwork mechanism allows the girl to swing in a realistic manner. Measures 14 1/2 inches in height. Contains original patent sticker 1879. Also includes original triangular box "Warner Mechanical Swing Patented July 2nd 1872" Excellent Condition.



62 | BOY AND GIRL CLOCKWORK SEE SAW TOY

\$12000

Made by Ives Blakeslee and Company, Bridgeport, Connecticut. Circa 1872. Measures 18 inches in length. A companion to the prior toy, when wound the clockwork mechanism causes the figures to rhythmically see saw back and forth. In working order. Excellent Condition.





**63 | PEEK-A-BOO CAT
IN A TANKARD**

\$5500

Made by Ives Blakeslee and Company. Bridgeport, Connecticut. Circa 1870. Measures 10 1/2 inches in height. When the clockwork mechanism is engaged the cat in hiding slowly raises the top of the tankard, piers out above its rim, turns its head and sticks his tongue out at you then retreats back to the safety of the tankard!
Excellent Condition.

64 | THE BUTTER CHURNER

\$7500

Made by Ives Blakeslee and Company. Bridgeport, Connecticut. Circa 1872. Measures 10 1/2 inches in height. As the children play, mother watches on churning her butter for the day. On highly decorated green box with yellow butter churner. Black and red highlights. One of the finest examples of an early clockwork toy known.
Near Mint Condition.



65 | THE COCK FIGHT

\$6500

Made by Ives Blakeslee and Company. Bridgeport, Connecticut. Circa 1870. Measures 7 1/2 inches in length. This extremely rare toy of which only three examples are known realistically depicts roosters at battle. Clockwork mechanism. Excellent Condition.



66 | THE FIDDLER

\$12500

Made by Ives Blakeslee and Company.
Bridgeport, Connecticut. Circa 1875.
Measures 9 inches in height. This wonderful
clockwork toy realistically depicts a fiddler
in action with its original wooden box and
highly decorative paper label.
Pristine Condition.



**67 | THE SUFFRAGETTE -
WOMAN'S RIGHTS ADVOCATE**
\$8500

Made by Ives Blakeslee and Company,
Bridgeport, Connecticut. Circa 1875.
Measures 11 inches in height. The
clockwork driven Suffragette spreads her
message of equality the podium.
Excellent Condition.



**68 | STUMP SPEAKER
CLOCKWORK TOY**
\$12500

Made by Ives Blakeslee and Company. Bridgeport,
Connecticut. Circa 1875. Measures 10 inches in height.
The carpet bagger rallies the crowd from his pulpit.
Contains original wooden box. Pristine Condition.



69 | MONKEY PERAMBULATOR

\$25000

Made by Ives Blakeslee and Company, Bridgeport, Connecticut. Circa 1875. Measures 8 1/2 inches in height. One of the finest known examples of this early Darwinian clockwork toy. Features a monkey dressed as a human on a horse-headed perambulator. Brightly colored with beautiful patina. Excellent Condition.



70 | PUNCH ON PERAMBULATOR

\$45000

Made by Ives Blakeslee and Company. Bridgeport, Connecticut. Circa 1875. Measures 9 inches in height. The only known example of this toy. A true museum piece. An exquisitely dressed punch figure rides tin headed horse clockwork perambulator. Excellent Condition.

MECHANICAL BANKS



71 | SNAPPING BULLDOG

\$9500

Made by Ives Blakeslee and Company. Bridgeport, Connecticut. Circa 1875. A terrific example of this action packed clockwork mechanical bank. Provenance Bill Norman Collection. Pristine Condition.



72 | UNCLE REMUS

\$24500

Made by Kyser and Rex. Philadelphia, Pennsylvania. Circa 1880. A beautiful and bright example of this desirable bank. Pristine Condition.



73 | AFGHANISTAN BANK
\$11500

Made by Kyser and Rex. Philadelphia, Pennsylvania. Circa 1880. A superior example of the Russian bear and an English lion meeting at the gates of Herat with exquisite highlights. Pristine Condition.



74 | LIGHTHOUSE BANK
\$8500

Unknown manufacturer. Circa 1891
Measures 10 1/2 inches in height.
A terrific example of this highly architectural bank.
No cracks, breaks or repairs.
Excellent Condition.



75 | MULTI COLORED INDEPENDENCE HALL TOWER
\$4250

Made by Enterprise Manufacturing Philadelphia, Pennsylvania Circa 1885
Measures 9 1/2 inches in height.
Excellent Condition.



**76 | CHIEF BIG MOON
SCARCE RED AND YELLOW
BASE**
\$8500

Made by J & E Stevens. Cromwell,
Connecticut. Circa 1880.
Excellent Condition.



77 | CREEDMOOR BANK
\$12500

Made by J & E Stevens. Cromwell,
Connecticut. Circa 1877. One of the
finest known examples of this very
popular bank. Near Mint Condition.



78 | BOY ON TRAPEZE
\$12500

Made by J Barton Smith Company.
Circa 1885. A superior example of this
highly desirable bank. With original
wooden box. Excellent Condition.



79 | BLACK SEATED BULLDOG WITH RED BLANKET

\$4600

Made by J & E Stevens. Cromwell, Connecticut. Circa 1885. Excellent Condition.



80 | PADDY AND THE PIG - GREEN JACKET

\$2900

Made by J & E Stevens. Cromwell, Connecticut. Circa 1885. Very Good Condition.



81 | ROOSTER

\$6800

Made by Kyser and Rex. Philadelphia, Pennsylvania. Circa 1885. Tremendous highlights, making this one of the better known examples. Pristine Condition.



82 | WHITE OWL TURNS HEAD

\$4600

Made by J & E Stevens. Cromwell, Connecticut. Circa 1885. Excellent Condition.



83 | WHITE HEN AND CHICK

\$14000

Made by J & E Stevens. Cromwell, Connecticut. Circa 1885. Rare and desirable white version of this bank with original wooden box. Excellent Condition.



84 | PEG-LEG BEGGAR

\$3700

Made by Judd Manufacturing. Wallingford Connecticut. Circa 1890. Very Good Condition.



85 | UNCLE TOM BLUE JACKET

\$6000

Made by Kyser and Rex. Philadelphia, Pennsylvania. Circa 1885. Provenance Hagerty Collection. Pristine Condition.



86 | JN
\$5500

Made by J & E Stevens.
Cromwell, Connecticut.
A pristine example of this bank with
terrific gold highlighting on rear.
With original wooden box.
Pristine Condition.



87 | BARREL WITH ARMS
\$2100

Made by J & E Stevens. Cromwell, Connecticut. Circa 1880.
Pristine Patina Pristine Condition.



88 | SPITZ DOG
\$750

Made by Grey Iron Manufacturing.
Mount Joy, Pennsylvania, Circa 1928.
Wonderful finish. Pristine Condition.

➤ CAP GUNS ➤



89 | JUST OUT CAP PISTOL

\$2750

Made by Ives Manufacturing. Bridgeport Connecticut.
 Circa 1884. The hammer is a chickens head. When the trigger is pulled he peck the back of the egg, exploding a cap and causing a chick to pop out. Excellent Condition.

90 | LAYING CAT PISTOL

\$4500

Manufacturer unknown.
 Circa 1885 A wonderfully designed figural cap gun with beautiful details and highlighting. Provenance the Bernard Berenholtz Collection. Pristine Condition.



91 | UNCLE SAM SAID GIT

\$4750

Manufacturer unknown. Circa 1885
 One of the most desirable of all political cap guns engraved 'Do we remember the Maine - We Do!'. Excellent Condition.



≡ BELL TOYS ≡

92 | SWAN CHARIOT BRONZE PATTERN

\$3400

Made by J & E Stevens
A terrific example assembled from original pattern parts
with working bellows.
Excellent Condition.



93 | BOY FIGHTING ALLIGATOR

\$4200

Made by Gong Bell #56. Excellent Condition.



94 | RASTUS AND HIS MOTHER

\$4750

Made by Gong Bell #59. Circa 1890.
A far superior example of this very delicate bell toy.
Excellent Condition.



95 | MONKEY ON LOG

\$1400

Made by NN Hill Brass Company. Circa 1890.
A superior example of this very common bell toy.
Excellent Condition.



96 | RUNNING MONKEY
\$3000

Made by Gong Bell #49. Circa 1890.
Beautiful gold highlighting on green base.
Pristine Condition.

97 | MONKEYS CLIMBING POLE
\$4200

Made by J & E Stevens. Cromwell,
Connecticut. Circa 1875. Measures 10 1/2
inches in height. Highly decorated example of
this rare toy. Fantastic realistic action when the
toy is drawn across the floor.
Excellent Condition.



98 | JONAH AND THE WHALE
\$2400

Made by NN Hill Brass Company.
Circa 1890. One of the finest
known examples of this toy.
Pristine Condition.



99 | TEDDY BEAR BELL RINGER

\$7250

Made by Gong Bell. Circa 1900. A very rare toy.
Near Mint Condition.



100 | WILD MULE JACK

\$1900

Made by J & E Stevens. Cromwell, Connecticut.
Circa 1885. A superior example of this common bell
toy. Excellent Condition.



101 | FATHER CHRISTMAS TREE STAND

\$2400

Germany. Circa 1900. This is the large example of this
sought after tree stand. The base measuring 12 inches
square. Excellent Condition.





