



Toy, Bank and Soldier Specialist

CATALOG 57

Presented within this catalog are the finest mechanical banks, early toys and toy soldiers to be made available in years. There are many “one of a kind” and “best known example” items that will either greatly improve your collection or start your collecting at an extremely high level. All items have been personally selected and vetted to the highest standards - virtually all are world class examples. These toys will sell quickly. Call to acquire your favorite today.



RAY HARADIN
 Toys of Yesteryear
 1039 Lakemont Drive
 Pittsburgh, PA 15243-1817
 (412) 343-8733
 Fax: (412) 344-5273
 1-800-349-8009
 email: raytoys@aol.com
 raytoys.com



Ray Haradin
 412-343-8733 • raytoys@aol.com
 raytoys.com

Leon Weiss
 Toy and Bank Consultant
 917-991-7352
 leonweiss@me.com



Steven Weiss
 Toy and Bank Consultant
 212-729-0011



Still Banks

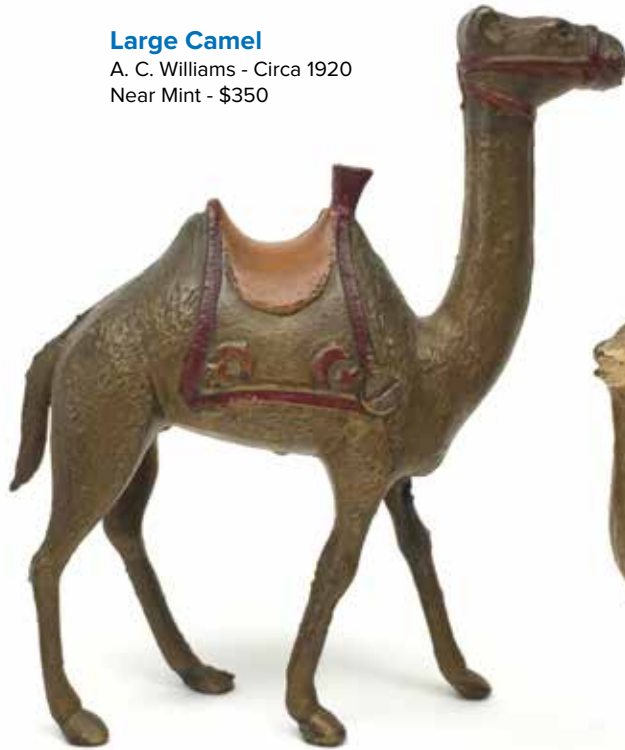
Rooster in Black

Arcade Manufacturing Company
Freeport, Illinois - Circa 1910
Near Mint - \$275



Large Camel

A. C. Williams - Circa 1920
Near Mint - \$350



Song Bird on Stump with Shamrock

A. C. Williams - Circa 1912
Near Mint - \$950

Rare with painted beak and green shamrock



The Indian Family

J. M. Harper
Chicago, Illinois - Circa 1907
Provenance: Edwin Mosler
Pristine Condition - \$2450



James Harper's Indian Family still bank is considered one of the most intricately cast banks ever crafted. Consider, for example, the extraordinary level of detail in the chief's beaded pigtailed and the refined subtlety of his feathered headdress

Model T Ford

Arcade Mfg. Company
Freeport, IL. - Circa 1925
Excellent Condition - \$1650



Arcade's iconic rendering of Henry Ford's Model T is one of the most popular of the transportation themed still banks. This example uses a slot in the rear window for the deposit of coins.

Baseball on Three Bats

Hubley Mfg. Company Lancaster, Pa. Circa 1914	Pristine Condition \$2200
---	------------------------------



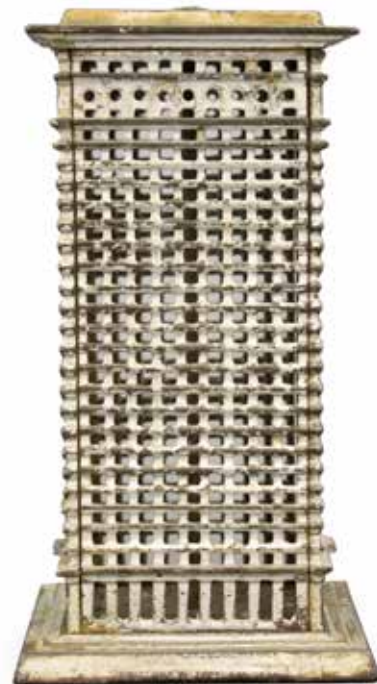
Double Door Bank

Grey Iron Casting Company Pennsylvania Circa 1899	Provenance: Donal P. Markey Near Mint Condition \$850
---	---



Large Highrise

Kenton Hardware Kenton, Ohio Circa 1920	Excellent Condition \$4800
---	-------------------------------



Highrise - Small & Medium

Kenton Hardware Kenton, Ohio - Circa 1920	Excellent Condition Small \$450, Medium \$525
--	--



Skyscraper with Six Turrets

By A. C. Williams Company Ohio - Circa 1920	Virtually Mint \$750
--	-------------------------



Still Banks

Elephant with Blanket

Kenton Hardware
Kenton, Ohio
Circa 1936

Excellent Condition
\$1650



Horse on Tub

A. C. Williams
Ravenna, Ohio
Circa 1920

Pristine Condition
\$375



Art Deco Elephant

A. C. Williams
Ravenna, Ohio
Circa 1930

Pristine Condition
\$475



Rabbit on Base

Kyser & Rex
Philadelphia
Circa 1884

Very Fine Condition
\$1450



Apple Bank

Kyser & Rex
Philadelphia
Circa 1890

Pristine Condition
\$2450



Two Kids

J. M. Harper
Chicago, Illinois
Circa 1907

Excellent Condition
\$1650



Mammy with Hands on Hips

Hubley Manufacturing Co. | Near Mint
Lancaster, Pennsylvania | \$350
Circa 1930



The Capitalist

Ober Mfg. Company | Very Fine Condition
Chagrin Falls, Ohio | \$1450
Circa 1905



Santa with Tree

Hubley Mfg. Company | Pristine Condition
Lancaster, Pa. | \$1500
Circa 1920



The Trust Bank

J. & E. Stevens | Excellent Condition
Cromwell, Ct. | \$5250
Circa 1890



Thrifty - The Wise Pig

Hubley Mfg. Company | Mint Condition
Lancaster, Pa. - 1930's | \$675
Provenance: Markey Collection



General Butler

J. & E. Stevens | Excellent Condition
Cromwell, Ct. | \$4800
Circa 1889



Still Banks

Medium Cupola - Burgundy

J. & E. Stevens | Excellent Condition
Cromwell, Ct. | \$550
Circa 1875



Log Cabin - Multicolor

Kyser & Rex | Pristine Condition
Philadelphia | \$1250
Circa 1890



This is a beautifully painted version. It is quite scarce as most examples are simply japanned.

Medium Cupola - Patriotic Colors

J. & E. Stevens | Excellent Condition
Cromwell, Ct. | \$625
Circa 1875



Japanned Pavilion Bank

Kyser & Rex | Excellent Condition
Philadelphia | \$875
Circa 1890



Bungalow Bank

Kenton Hardware | Pristine Condition
Kenton, Ohio | \$650
Circa 1920



Green & Yellow Pavilion Bank

Kyser & Rex | Fine Condition
Philadelphia | \$850
Circa 1885



Ironmaster Cottage

Kyser & Rex | Pristine Condition
Philadelphia | \$3200
Circa 1890



This is the trap-less version, the bank must be unscrewed to retrieve your coins.

Building with Basement

Ohio Foundry Company | Near Pristine Condition
Ohio | \$3800
Circa 1893



A very scarce building bank. This one with mica highlights to simulate snow.

Witch's Gingerbread House

French | Pristine Plus
Circa 1910 | \$2500



This is one of the best examples that we have seen.

Medium Cupola - Red Roof

J. & E. Stevens | Excellent Plus Condition
Cromwell, Ct. | \$650
Circa 1875



Green Mosque Bank

A. C. Williams | Provenance: Donal P. Markey
Ravenna, Ohio | Near Mint Condition
Circa 1915 | \$1350



Medium Cupola - Blue Roof

J. & E. Stevens | Pristine Condition
Cromwell, Ct. | \$850
Circa 1875



It is extremely rare to be painted in this manner.

Large Cupola - Patriotic Colors

J. & E. Stevens | Excellent Condition
Cromwell, Ct. | \$1150
Circa 1875



Deluxe Painted Statue of Liberty

Kenton Hardware | Excellent Condition
Kenton, Ohio | \$1650
Circa 1910



Large Cupola - Tan, Brown & Green

J. & E. Stevens | Pristine Condition
Cromwell, Ct. | \$1350
Circa 1875



Home Savings Bank

J. & E. Stevens | Excellent Condition
Cromwell, Ct. | \$950
Circa 1885



1882 Villa Bank

Kyser & Rex | Very Fine Condition
Philadelphia | \$1200
Circa 1882



Roof Bank

J. & E. Stevens | Very Fine Condition
Cromwell, Ct. | \$950
Circa 1895



Still Banks

Medium Cupola - Powder Blue

J & E Stevens Company | Near Mint
Cromwell, Ct. - Circa 1880's | \$1250



Castle Bank

By Kyser & Rex | Near Mint
Philadelphia, Pa. - Circa 1880's | \$1850



This unusual dark jappaned example has wonderful gold and red highlights.

City Bank - Pink, Red & Grays

J & E Stevens Company | Pristine Condition
Cromwell, Ct. - Circa 1880's | \$3750



Coin Registering Bank

By Kyser & Rex Company | Pristine Condition
Philadelphia, Pa. - Dated 1890 | \$14,500



Lilliput Still Bank

J. & E. Stevens | Excellent Plus
Cromwell, Ct. - Circa 1875 | \$6500



House with Bay Windows - Medium

Kyser & Rex Company | Excellent Condition
Philadelphia | \$3250
Circa 1880



Unusual austere palette of red, tan and burgundy.

Boston State House - Small

Smith & Egge | Pristine Condition
American | \$14,500
Circa 1890



The Boston State House represents one of the great icons of the architectural still bank field. This beautiful specimen is one of the finest known to exist.

House with Bay Windows - Medium

Kyser & Rex Company | Pristine Condition
Philadelphia | \$4250
Circa 1880



A super colorful example finished in teal blue, yellow and sage green.

Palace Bank - Multicolor

Ives, Blakeslee Company | Pristine Condition
Bridgeport, Ct. | \$32,500
Circa 1890



A Palace Bank with a deluxe painted finish is exceedingly scarce. This green and red example is exceptional in every detail.

Still Banks

Independence Hall - 3 in 1 - Large Size

Enterprise Mfg. Co. | Pristine Condition
Philadelphia | \$8500
Circa 1876



This impressive architectural bank was made for souvenir distribution at the Centennial Fair held in Philadelphia in 1876. There are perhaps a dozen known specimens of this large version which presents the full structure of Independence Hall.

Globe with Eagle Red with Gold Base

Enterprise Mfg. Company | Pristine Condition
Philadelphia | \$1475
Circa 1876



Globe with Eagle Gold with Red Base

Enterprise Mfg. Company | Excellent Condition
Philadelphia | \$1075
Circa 1876



Globe with Eagle Red with Blue Base

Enterprise Mfg. Company | Pristine Condition
Philadelphia | \$1875
Circa 1876



Boston Bull Terrier

Hubley Mfg. Company
Lancaster, Pa.
Circa 1930 - 10" Tall

Pristine Condition
\$975



Puppies in Basket

Designed by M. Rosenstein
Hubley Mfg. Company
Lancaster, Pa.
Dated 1932 - 7" Tall

Pristine Condition
\$975



Spaniel

American
Circa 1920 - 8" Tall

Pristine Condition
\$950



Beagle Puppy

Hubley Mfg. Company
Lancaster, Pa.
Circa 1930 - 8" Tall

Pristine Condition
\$1875



Seated Bloodhound

American
Circa 1935 - 7" Tall

Near Mint Condition
\$1250



Seated Beagle

American
Circa 1935 - 8" Tall

Pristine Condition
\$1250



Doorstops

Little Red Riding Hood

Eastern Specialty Company
Pennsylvania
Circa 1925 - 7" Tall

Excellent Condition
\$1350



Parakeet on Stump

Bradley & Hubbard
Connecticut
Circa 1920 - 8" Tall

Pristine Condition
\$750



Twin Cats

Hubley Mfg. Company
Lancaster, Pa.
Circa 1930 - 8" Tall

Pristine Condition
\$875



Poppies in a Basket

American
Circa 1925 - 11" Tall

Near Pristine Condition
\$1450



Large Cockatoo

American
Circa 1920 - 13" Tall

Excellent Condition
\$975



Modernistic Flower

American
Circa 1920 - 10" Tall

Pristine Condition
\$1950



Cape Cod Cottage

By Eastern Specialty Company | Near Mint Condition
 American | \$850
 Circa 1930 - 5" Tall



Old Salt at the Helm

Spencer Company | Pristine Condition
 Connecticut | \$950
 Circa 1935 - 6" Tall



Monroe Tavern

Sarah Symonds | Excellent Plus
 New England | \$2750
 Circa 1915 - 6" Tall



Spanish Fan Dancer

Hubley Mfg. Company | Pristine Condition
 Lancaster, Pa. | \$750
 Circa 1930 - 9" Tall



Highland Lighthouse

Eastern Specialty Company | Excellent Condition
 Pennsylvania | \$1850
 Circa 1925 - 8" Tall



Ragamuffin with Cane

American | Excellent Condition
 Circa 1920 - 10" Tall | \$875



**Raggedy Ann and Andy
 Pair of Figural Bookends**

P. F. Volland & Company | Very Fine Condition
 Chicago, IL. | \$2250
 Dated 1931 - 6" Tall



The Street Singers

Hubley Mfg. Company | Near Mint Condition
 Lancaster, Pa. | \$1950
 Circa 1930 - 7" Tall



**Boy and Girl Reading
 Pair of Figural Bookends**

Eastern Specialty Company | Pristine Condition
 Pennsylvania | \$1250
 Circa 1920 - 5" Tall



Shooting Gallery Targets

Zoot Suit Monkey Target

Made by Evans & Mueller | Excellent Condition
Chicago - 1930 - 10" x 13" | \$3750



Military Man Fairground Device

American - Circa 1900 - 19" Tall | Excellent Condition
\$12,500



Colossal Cast Iron Retriever

J. W. Fiske Company | 41" Long x 19" Tall
New York City | \$18,500
Circa 1890's



This magnificent sentinel canine is arguably one of the most sensitive and beautifully conceived iron sculptures created in the nineteenth century. He is imbued with a genuine sense of passion for his masters, waiting endlessly and patiently at the door for their safe return. Such loyalty deserves a good home. You might consider paying his adoption fees.

Shooting Gallery Targets

The Giraffe Rider Shooting Gallery Target

By C. W. Parker Company
Abilene, Kansas
Circa 1895

14" Long x 15" Tall
\$12,500



Clown Shooting Target

American
1930's - 12" Tall

Excellent Condition
\$1075



Pair of Cast Iron Jacks

American
Circa 1930 - 6" Tall

Pristine Condition
\$950

Leaping Rabbit Shooting Gallery Target

By C. W. Parker Company
Abilene, Kansas
Circa 1900
Old "in use" Park Paint

24" Long x 12" Tall
\$9500



Shooting Gallery Targets



Valkyrie Shooting Gallery Target

Made by the W. Wurflein Company
Philadelphia - Late 1890's - 70" Tall
Provenance: Hillary Underwood Collection
Pristine Original Condition
\$95,000

The Wurflein family surname was a very important gun making name in Philadelphia. Andrew Wurflein became famous for his precision single shot rifles and other muzzle loading guns as early as the 1840's. His son William founded the W. Wurflein Gun Co. in 1874 and it remained in active business until 1910. His specialty was percussion derringers and double barrel shotguns. In the late 1890's, as an adjunct to the gun business, William Wurflein produced a small line of exceptional quality shooting gallery targets, typically made of cast iron, sheet steel and wood.

This Valkyrie target represents the absolute pinnacle of achievement in Wurflein's shooting target output. From her breasts up she is made of thick gauge cast iron over wood and from her ribcage downwards she is only wood. She possesses many of the accoutrements often associated with the Valkyries, the small conclave of Norse women warriors. These include a Phrygian cap with Hermes wings above the ears, a heavy suit of mail with pointy breastplates and an owl clad shield. From the waist down, she is also clad in the showgirl style of the Gay 90's, as evidenced by her blue culottes, bright red stockings and black boots.

Richard and Valerie Tucker's recent scholarly examination of shooting gallery targets, *Step Right Up*, identifies these large scale creations by Wurflein only in old line cut illustrations from a company catalogue. This figure, along with one sold at Skinners Inc. last year, are among the first to ever be discovered. This presents a rare opportunity to acquire what is arguably the finest condition large shooting gallery target in the world.

Indian and Polar Bear

Rare White Bear Variant
By J. & E. Stevens Company
Cromwell, Ct.
Circa 1907

Pristine
Condition
\$6500



Mason Bank

By Shepard Hardware
Buffalo, NY.
Circa 1890

Excellent Condition
\$9500



Leap Frog

By Shepard Hardware
Buffalo, NY.
Circa 1890

Pristine Condition
\$5750



Hen and Chicks

Rare White Hen Variant
By J. & E. Stevens Company
Cromwell, Ct.
Circa 1897

Pristine Condition
\$22,500



Mechanical Banks

Always Did 'Spise a Mule

Boy Seated on Bench Version | Pristine Condition
By J. & E. Stevens Company | \$5800
Cromwell, Ct. - Circa 1897



Darktown Battery

By J & E. Stevens Company | Pristine Condition
Cromwell, Ct. - Circa 1888 | \$7500

Always Did 'Spise a Mule

Jockey Version | Pristine Condition
By J. & E. Stevens Company | \$3250
Cromwell, Ct. - Circa 1879



Chief Big Moon

Red and Yellow Base
By J. & E. Stevens Company
Cromwell, Ct. - Circa 1899

Pristine Condition
\$7500



Initiating Bank First Degree

By Mechanical Novelty Works
New Britain, Ct.
Circa 1880

Excellent Plus
Condition
\$ 27,500

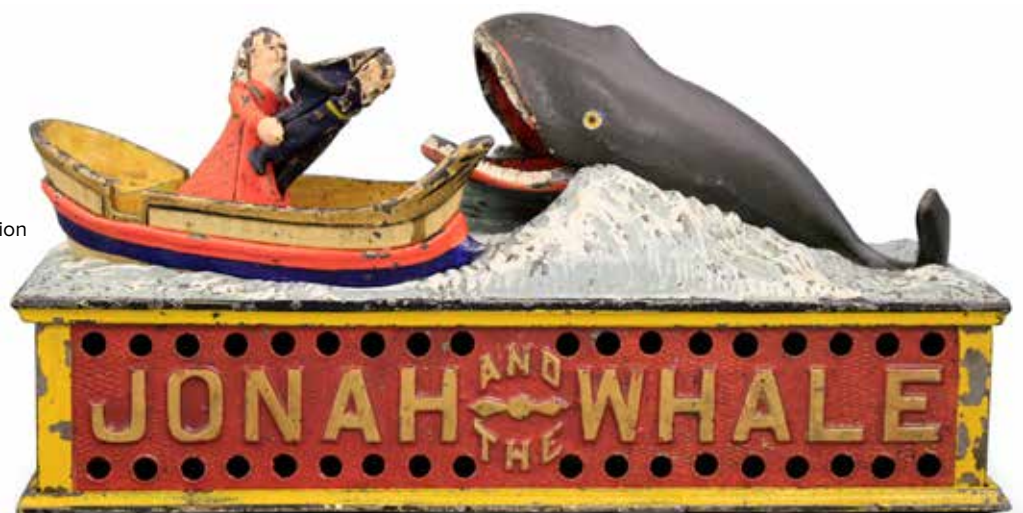


This unusual bank appears to draw its inspiration from the initiating rights of secret societies, where often an artificial goat was utilized to ceremonially butt the behind of the novice. In this instance, the coin held in the young man's hands are deposited into the frog's mouth when the goat strikes his behind, forcing him to lurch forward.

Jonah and the Whale

By Shepard Hardware
Buffalo, NY. - Circa 1890

Pristine Condition
\$6500



Mechanical Banks

Pig in Highchair

By J. & E. Stevens Company
Cromwell, Ct.
Circa 1897

Pristine
Condition
\$2450



"Joseph" Elephant with Howdah

Enterprise Manufacturing Company
Philadelphia, Pennsylvania - Circa 1880

Excellent Plus
\$4200



Bear Hugs Tree

By H. L. Judd Company
Wallingford, Ct.
Circa 1885

Pristine Condition
\$2750



The elephant is usually nameless,
however this one is named "Joseph"

Initiating Bank 2nd Degree

By Mechanical Novelty Works
New Britain, Ct.
Circa 1880

Excellent Condition
\$9500



Tabby Bank

By Kyser & Rex
Philadelphia
Circa 1885

Pristine Plus
Condition
\$7500



Mechanical Banks

Frog on Rock

AKA "Jug-O-Rum"
By Kilgore Mfg. Company
Westerville, Ohio
Circa 1930

Mint with
Original Box
\$ 7500



Rooster Bank

By Kyser & Rex
Philadelphia
Circa 1880's

Near Mint Condition
\$ 7500



Rabbit in Cabbage Bank

AKA "Flop-Ears"
By Kilgore Mfg. Company
Westerville, Ohio
Circa 1930

Mint with
Original Box
\$10,500



Cat and Mouse Bank

J & E Stevens Company
Cromwell, Ct. - Circa 1891
Pristine Plus Condition
\$10,500



Miniature Organ Bank

By Kyser & Rex Company
Frankford, Pa.
Circa 1880's
Pristine Condition
\$3250



St. Louis World's Fair

Combination Key Bank
By Wilmer Novelty Company
Cleveland, Ohio
Circa 1905

Mint with Cardboard Box
\$6500



Mechanical Banks

Presto Bank

By Kyser & Rex
Philadelphia
Circa 1890

Pristine Condition
\$1800



Musical Church

Unknown Manufacturer
Germany
Circa 1920

Pristine Condition
\$5500



Hall's Excelsior Bank

Finished in Patriotic Colors
By J & E Stevens Company
Bridgeport, Ct.
Circa 1870's

Near Mint Condition
\$5500



Panorama Bank

By J. & E. Stevens
Cromwell, Ct.
Circa 1880's

Pristine Condition
\$25,000



Novelty Bank

By J. & E. Stevens Company
Cromwell, Ct.
Circa 1872

Near Mint Condition
\$9500



Mechanical Banks

Magic Bank

By J. & E. Stevens
Cromwell, Ct.
Circa 1874

Pristine Condition
\$9500



Home Bank

By J. & E. Stevens Company
Cromwell, Ct.
Circa 1875

Excellent Condition
\$2800



Dog on Turntable Bank

Japanned with Green Wash
By the Judd Mfg. Company
Wallingford, Ct.
Circa 1880's

Provenance:
Donal Markey
Frank Kidd
Mint Condition
\$9500



Deluxe Painted Dog on Turntable

By the Judd Mfg. Company
Wallingford, Ct.
Circa 1880's

Excellent
Condition
\$7500



Dog on Turntable

Copper Finish with Green Wash
By the H. L. Judd Company
Wallingford, Ct.
Circa 1880's

Pristine
Condition
\$5250



Cabin Bank, Yellow

By J. & E. Stevens Company
Cromwell, Ct.
Circa 1885

Pristine Condition
\$2250



Cabin Bank, Green

By J. & E. Stevens Company
Cromwell, Ct.
Circa 1885

Near Mint Condition
\$2750



Mechanical Banks



Paddy and the Pig Bank

By J. & E. Stevens Company | Pristine Condition
Cromwell, Ct. - Circa 1880's | \$12,500

The Paddy and the Pig Bank tells a very amusing story. The Irishman has gotten drunk as evidenced by the flask of whiskey emerging from his back pocket. Apparently, in this cantankerous state, his beloved pig got away from him, compelling him to chase it down and re-secure her with the rope.

Two Frogs Bank

By J. & E. Stevens Company | Pristine Condition
Cromwell, Ct. - Circa 1882 | \$7500



The Two Frogs Bank depicts a sensitive playful moment between a mother and her young frog. The many shades of green, yellow and brown that constitute their camouflaged skin, along with the two toned sea grass, make this a particularly appealing bank in terms of aesthetics.

Boy Robbing Bird's Nest

J & E Stevens Company
Cromwell, Ct. - Circa 1906
Near Mint Condition
\$22,500



Owl Turns Head Bank

By J. & E. Stevens Company
Cromwell, Ct. - Circa 1880
Pristine Condition
\$2800



Eagle & Eaglets Bank

AKA The Eagle Bank
J & E Stevens Company
Cromwell, Ct. - Circa 1883
Near Mint with the
Original Wood Box
\$9500



Mechanical Banks



Shoot the Chute Bank

By J. & E. Stevens Company
Cromwell, Ct. - Circa 1940's
Pristine with Original Box
\$17,500

This exuberant mechanical toy bank depicts Buster Brown and his faithful canine companion Tige taking a sled ride down a steep incline. It is a 1940's copy made from the original mold by pioneering toy bank hobbyist Mark Haber. Collectors refer to such works as "desirable collectible forgeries". A boxed period specimen in pristine condition would run more than \$60,000.



Lion Hunter Bank

By the J & E Stevens Company

Cromwell, Ct. - Circa 1911

Mint Condition

\$65,000

At the end of his term in office, Teddy Roosevelt went on an extended safari in Africa. Ever since his youth, TR's exploits had been of great interest to the public. Now, as a former President, his every move was detailed in the press for his adoring fan base. The Lion Hunter bank presents us with an image of Teddy as a brave man with limitless courage. He stares down the barrel of his rifle and looks unflinchingly into the eyes of a lion. Whether such celebrated anecdotes of Teddy's fearlessness were genuine or mere dramatic balderdash, they have provided the folklore upon which his legacy is based. Originally in Gertrude Hegarty's collection and later in Stanley Kesselman's, this example of the Lion Hunter Bank has always been considered the #1 specimen.



**Symphonium Musical Savings Bank
"You Pay - I'll Play"**

Attributed to Lochmann

Leipzig, Germany - Circa 1895

Provenance: Mosler & Steckbeck Collections

Pristine Condition

\$22,500



Regina Musical Savings Bank

Regina Music Box Corporation
Rahway, New Jersey - Circa 1900
Near Mint
\$22,500

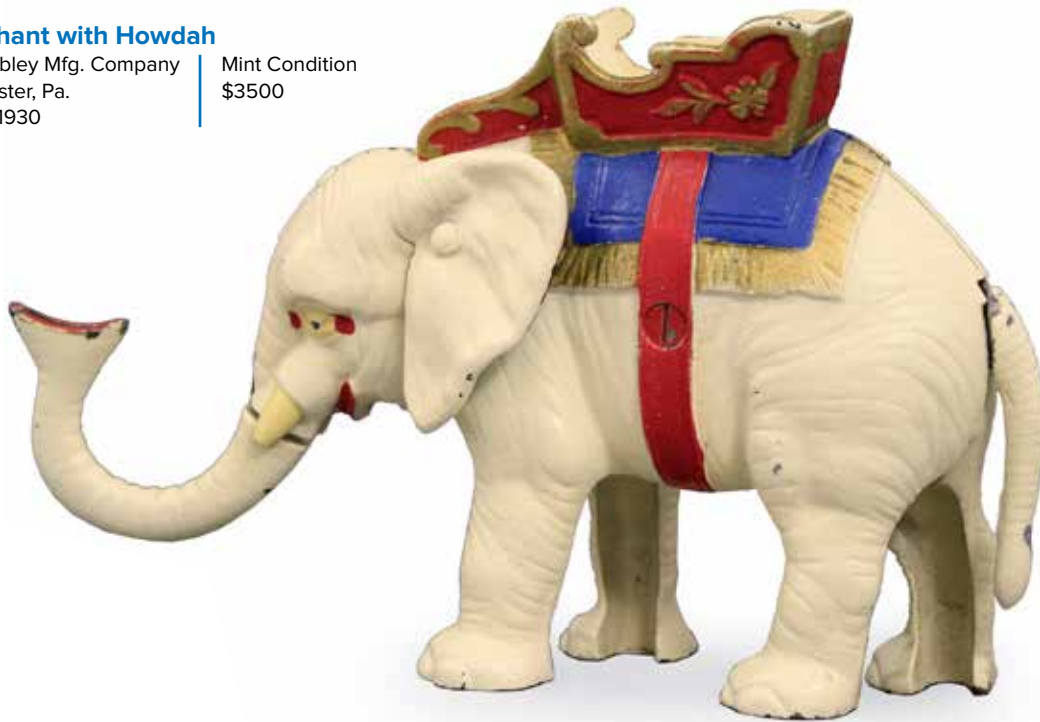
A very rare bank that plays beautiful tunes. This bank is encased in an oak housing and is adorned with numerous applications. Measures 17 inches high by 13 inches by 6 1/2 inches deep. When a coin is deposited, the music plays. The finest known example with 11 original musical disks.

Mechanical Banks

Elephant with Howdah

By Hubley Mfg. Company
Lancaster, Pa.
Circa 1930

Mint Condition
\$3500



Clown on Globe Bank

By J. & E. Stevens Company
Cromwell, Ct.
Circa 1890

Pristine with Box
\$9500



Uncle Sam Bank

Shepard Hardware Company
Buffalo, NY
Circa 1890 - 11 1/2" Tall

Pristine Condition
\$8500



Seated Bulldog with Red Blanket

J. & E. Stevens Company | Excellent Plus
Cromwell, Ct. - 1880's | \$3600



Speaking Dog Bank

Rare Blue Dress Color Variation | Pristine Condition
By the J & E Stevens Company | \$9500
Cromwell, Ct. - 1890's - 7 1/2" Long



Patronize the Blind Man and His Dog

By the Kyser & Rex Company | Excellent Condition
Philadelphia- 1880 - 7" Long | \$12,500



Not only do mechanical banks function to encourage us to save our loose coins, but in the case of the "Patronize the Blind Man" bank, we are instructed to provide alms for people less fortunate than ourselves.

Mechanical Banks

JN Bank

J. & E. Stevens Company | Pristine
Cromwell, Connecticut - Circa 1890 | \$3500



A wonderful example of this highly popular bank.
Beautiful gold lettering on the reverse.

William Tell

J. & E. Stevens Company | Excellent Plus
Cromwell, Connecticut - Circa 1896 | \$4250



Tammany Bank

J. & E. Stevens Company | Pristine
Cromwell, Connecticut - Circa 1873 | \$10,500



An exceptional "Hall's Pat". example of this popular bank with the original wooden box.

Professor Pug Frog's Great Bicycle Feat

J. & E. Stevens Company
Cromwell, Connecticut
Circa 1886.

Pristine
\$26,500



White blanket version. Set the high wheeled bicycle in place. Place a coin behind the bicycle's rear wheel and turn the crank. Press the activating lever and the frog on his bicycle will flip over, depositing the coin into the bank. This is one of the most animated mechanical banks.

Professor Pug Frog's Great Bicycle Feat

J. & E. Stevens Company
Cromwell, Connecticut
Circa 1886

Excellent Plus
\$13,500



Desirable red blanket version. Set the high wheeled bicycle in place. Place a coin behind the bicycle's rear wheel and turn the crank. Press the activating lever and the frog on his bicycle will flip over, depositing the coin into the bank. This is one of the most animated mechanical banks.

Mechanical Banks

Butting Ram - Man Thumbs Nose

Designed by Ole Storle
Wagner & Zweibel Machine Shop
Oshkosh, Wi. - Circa 1895

Pristine Condition
\$22,500



Fowler Bank

AKA the Sportsman Bank
By J & E Stevens Company
Cromwell, Ct. - Circa 1890

Excellent Condition
\$22,500



In the realm of "gun shooting" toy banks, the Fowler Bank is the most difficult one to obtain, especially in great condition like this example. Set the trigger on the rifle and place a cap inside. When the lever is pushed, the sportsman moves leftward as the bird is released, as if he is taking aim at his target. The cap explodes and the bird falls to the ground.



Atlas Bank

Unknown Manufacturer
American - Circa 1895
Near Mint Condition
\$27,500

With its age old slogan that “Money Moves the World”, the Atlas Bank easily qualifies as the ultimate capitalist bank. At first glance, coins cannot be deposited. But, if the lever is pushed leftward, the coin slot becomes patently visible. When the lever is released, a powerful spring causes the globe to spin on Atlas’ back. In the case of the Atlas Bank, money literally moves the world.

Mechanical Banks

Elephant and Three Stars

Unknown Manufacturer | Mint Condition
American | \$9500
Circa 1890's



An absolutely dazzling example of this bank that Frank Kidd acquired from renowned bank specialist Donal Markey.

Jumbo Bank - No Platform

Possibly Kyser & Rex Company | Pristine Condition
Philadelphia - Circa 1880's | \$3300



To date, only 3 specimens of the Jumbo Bank (produced sans platform) have been found. It represents a super scarce and desirable variation.

Circus Bank

By Shepard Hardware
Buffalo, NY - Circa 1888

Pristine Condition
\$48,500



The Circus Bank is arguably one of the most colorful and animated toy banks ever devised. As the clown circles the ring, the pony gallops up and down three times. Coins are deposited when the clown raises his right hand and pushes in the penny.

Motor Bank

Kyser & Rex Company
Frankford, Pa. - Late 1880's
Pristine Condition - \$85,000

The Motor Bank represents one of the most elusive mechanical banks in the world. Perhaps as many as two dozen exist, however, there are only a few known specimens that are without repair and include the original trap. This particular bank was selected for illustration in several books specializing in rare mechanical banks.



Perfection Registering Bank

Scarce Red Colored Base
By J & E Stevens Company
Cromwell, Ct. - Circa 1900
Pristine Condition - \$37,500

It was toy bank enthusiast Oliver Clark who first successfully deciphered the imagery portrayed on the Perfection Registering Bank. He began by trying to ascertain the identity of the girl and her canine companion. He quickly deduced that this was none other than Dorothy and Toto walking on the yellow brick road. All the characters from Frank Baum's classic tale The Wizard of Oz are present, including the Scarecrow, the Tin Man and the Cowardly Lion. Even the birds that torment the Scarecrow in the fields are revealed on the front of the bank.

Cast Iron Toys

Three Traffic Signs

American
Circa 1920s - 5" - 6" Tall

Near Mint Condition
\$1500



Lincoln Zephyr Touring Car

A. C. Williams
Ravenna, Ohio
Circa 1925 - 9" Long

Pristine Condition
\$1650



Pony Blimp

Kenton Hardware
Kenton, Ohio
Circa 1920 - 5½" Long

Excellent Condition
\$675



Policeman Motorcycle

Vindex Toys
Belvedere, Illinois
Circa 1928 - 9" Long

Excellent Condition
\$4800



Peashooter #7 Motorcycle

Hublely Mfg. Company
Lancaster, Pa.
Circa 1925 - 5½" Long

Excellent Condition
\$775



Flat Top Yellow Cab Bank

Arcade Mfg. Company
Freeport, IL
Circa 1925 - 8" Long

Excellent Condition
\$2200



Yellow Cab

Arcade Mfg. Company
Freeport, IL
Circa 1925 - 9" Long

Excellent Condition
\$2200



Alphonse & Gaston Car

Kenton Hardware
Kenton, Ohio
Circa 1910 - 7½" Long

Excellent Condition
\$5500



Alphonse and Gaston was an American comic strip designed and drawn by Frederick Burr Opper. It featured a bumbling pair of Frenchmen who exhibited an obsessive fondness for politeness. Even seated in the back seat of the Captain's motorized landau, they can be seen obsequiously bowing to one another. This toy rarely turns up in such beautiful condition.

"Seeing New York"

Scarce Automotive Charabanc
Kenton Hardware
Ohio - Circa 1911 - 9" Long

Excellent Plus Condition
\$12,500



The first use of motorized charabancs occurred in Edwardian times. They were elongated wagon-like buses that functioned most typically as sightseeing vehicles. In this instance, we find five renowned cartoon characters out for a tour of New York City. They include: the Captain, Gloomy Gus, Mama Katzenjammer, Happy Hooligan and Foxy Grandpa.

Cast Iron Toys

Hansom Cab with Cantering Horse

Ives, Blakeslee Company | Near Mint Condition
Bridgeport, Ct. | \$8500
Circa 1890 - 12" Long



Cabriolet Coach

Hubley Mfg. Company | Pristine Condition
Lancaster, Pa. | \$3250
Circa 1910 - 15" Long



Ornate Hansom Cab

Welker & Crosby | Pristine Condition
Brooklyn, New York | \$10,500
Circa 1880 - 11" Long





The Cutter Sleigh

By Ives, Blakeslee Company
Bridgeport, Ct. - Circa 1880
Excellent Condition
\$95,000

In the world of antique toys and the collecting of them, the Ives family of Bridgeport, Connecticut holds a very significant place. Not only did they produce a line of iron and clockwork novelty toys of paramount quality, but they also helped other toy designers bring their magical creations to the market place through industrial nurturing and inclusion in their brilliant marketing catalogues.

Jerome Secor is one such example of their beneficence .

This extraordinary toy sleigh is one of three different fancy carriage models that Ives produced in cast iron in an oversized format; the other two being a dog cart and hansom cab. All three from this group are extremely rare and desirable, but the Cutter Sleigh is their truest and greatest masterpiece. There are five known extant specimens of this toy. To date, Gertrude Hegarty's Cutter Sleigh is the only example outfitted with a dressed figure. It recently re-sold for \$234,000 as part of the Max Berry Collection.

Cast Iron Toys



Lady Liberty Bell Ringer

Made by the Kyser & Rex Company
Frankford, Pa. - Circa 1880 - 8" Long
Very Fine Condition
\$14,500

This fascinating bell toy represents one of the rarest politically themed toys ever produced. Indeed, to date, there exist only four known specimens. Kyser & Rex depicts Lady Liberty (aka Columbia) in a very forthright manner; standing erect and defiant in a scalloped chariot. The image of Lady Liberty ensconced in an ethereal chariot drawn through the clouds derives from long-standing print sources and other artistic precedents dating to earliest American times.

As the toy is pulled, Lady Liberty raises her flag bearing right arm up and down to ring the bell that proclaims freedom throughout the land. She wears patriotically colored garments adorned with stars. On her head, one finds the Liberty Cap that is often associated with her personage. In her left hand she holds a fasces, a bundle of long straight sticks that are entwined with an olive branch and surmounted by an axe blade. This symbolizes America's strength and her readiness for war, tempered by her preference for peace.



**Yankee School Master
aka the Alphabet Man**

Unknown Manufacturer

American - Circa 1880's - 10.5" Tall

Provenance: Bernard Barenholtz Collection

Excellent Condition

\$62,500

Though of unknown manufacture, the Yankee School Master is nonetheless considered to be a supreme icon of ingenuity and design. An imposing broad-shouldered, fancily dressed educator attempts to teach the alphabet to every child that plays with him. As the lever is lifted and depressed, his eyes roll and his left hand indicates that the letters beneath his bow tie have advanced.

No one has ever made an attribution as to the company that produced this clever cast iron figure. But, at this time, we will hazard a guess and attempt to unravel this long-standing mystery. We are firmly of the opinion that it is none other than the work of the J & E Stevens Company in Cromwell, Ct. He bears very obvious similarities in facial expression and hairstyle to the Tammany Bank as it was first produced in the 1870's. Furthermore, the nuanced hues of light green, Della Robbia blue, burnt red, yellow and brown are clearly in evidence in both toys. However, until we discover patent designs or production charts that demonstrate a direct link to Stevens, we will never know for certain.

Cast Iron Toys

Santa Sleigh

Kyser & Rex
Philadelphia, Pa.
Circa 1885 - 13" Long

Excellent Condition
\$11,500



Royal Circus Mirror Van

Hubley Mfg. Company
Lancaster, Pa.
Circa 1906 - 16" Long

Pristine Condition
\$5500



Royal Circus Bandwagon

Hubley Mfg. Company
Lancaster, Pa.
Circa 1906 - 33" Long

Excellent Condition
\$12,750



Police Patrol

Shimer Toy Company
Pennsylvania
Circa 1890 - 20" Long

Mint Condition
\$7500



Police Patrol

Dent Hardware Company
Fullerton, Pa.
Circa 1910 - 19" Long

Near Mint Condition
\$4800
(missing one rear figure)



Fire Patrol

Shimer Toy Company
Pennsylvania
Circa 1890 - 19" Long

Pristine Condition
\$8500



To our knowledge this is the only known painted specimen of the toy.

Cast Iron Toys

Hook & Ladder

Pratt & Letchworth
Buffalo, New York
Circa 1890 - 22" Long

Excellent Condition
\$2450



Two Horse Fire Pumper

Hubley Mfg. Company
Lancaster, Pa.
Circa 1896 - 21" Long

Pristine Condition
\$4500



Two Horse Hose Reel

Rare Size
Pratt & Letchworth
Buffalo, New York
Circa 1890 - 16" Long

Pristine Condition
\$5750



Mechanical Fire House with Pumper

Ives, Blakeslee & Company
Bridgeport, Connecticut - Circa 1890
15 1/2" long by 11 1/2" high by 7 1/2" wide

Excellent Plus
\$9500



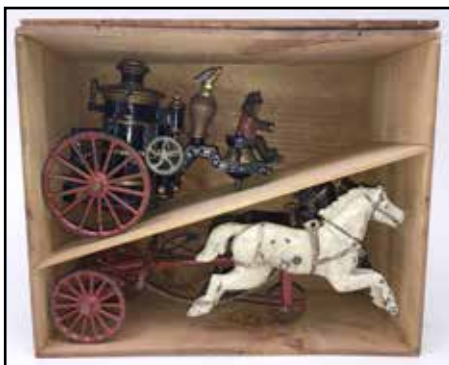
This iconic firefighting toy is one of the most expensive toys produced in the 19th century. When wound, the alarm bell sounds, the doors swing open and the pumper rolls into action.



Horse Drawn Clockwork Fire Pumper

Ives, Blakeslee & Company
Bridgeport, Connecticut - Circa 1890 - 19" long
Pristine - \$14,500

An exceedingly rare clockwork driven pumper in its original box with end label and original driver, fireman, bucket, eagle and key. An extraordinary find.



Cast Iron Toys

Two Horse Electroplated Pumper

Dent Hardware
Fullerton, Pa.
Circa 1910 - 21" Long

Mint Condition
\$8500



Two Horse Hose Reel

Dent Hardware
Fullerton, Pa.
Circa 1910 - 22" Long

Pristine Condition
\$10,500



Three Horse Fire Pumper

Dent Hardware
Fullerton, Pa.
Circa 1910 - 22" Long

Near Mint Condition
\$8500



Three Horse Hook & Ladder

Dent Hardware
Fullerton, Pa.
Circa 1910 - 31" Long

Pristine Condition
\$8500



Oversized Three Horse Fire Pumper

Kenton Hardware
Kenton, Ohio
Circa 1905 - 24" Long

Excellent Condition
\$8500



Oversized Three Horse Hook & Ladder

Kenton Hardware
Kenton, Ohio
Circa 1905 - 33" Long

Excellent Condition
\$8500



Cast Iron Toys

Father Christmas Tree Stand

Made in Germany
Circa 1900.

Excellent Plus
\$3200



Ding Dong Bell Toy

Gong Bell Mfg. Company
Connecticut
Circa 1890 - 9" Long

Pristine Condition
\$4500



Fire Ladder Truck

Arcade Manufacturing Company
Freeport, Illinois - Circa 1925. 15 1/2" long
Retains original box.

Excellent Plus
\$3400





Swan Chariot - Original Bronze Pattern

J. & E. Stevens

Cromwell, Connecticut - Circa 1890. 10" long

Near Mint - \$6500

An extraordinary fantasy toy depicting a young girl, safely seated in a gargantuan clam shell being pulled across the waters by an equally giant swan. Wonderful flapping action to the wings. This is an original brass pattern from the J. & E. Stevens Foundry. Purchased from Mark Haber.



Electroplated Brownies Sleigh

Hubley Manufacturing

Lancaster, Pennsylvania - Circa 1895 - 16 1/2" long

Near Mint

\$28,000

One of the rarest of all Hubley toys this electroplated toy is finished with a bronze and copper flashed surface that is emblematic of the opulence of the Gilded Age. Any lucky child given such a toy was most probably from a wealthy and privileged family.

Cast Iron Toys

Bremen Junkers W 33 Airplane

Made by Hubley Mfg. Company
Lancaster - 1930 - 7 1/2" Wingspan

Near Mint Condition
\$975



Represents the first plane to finish a transatlantic crossing (east to west), which occurred in April 1928. Details included a ribbed cabin and tail fin.

Lindy NR-211 Airplane

Made by Hubley Mfg. Company
Lancaster - 1930 - 10 3/4" Wingspan

Pristine Condition
\$6500



This magnificent toy plane is a fantastic representation of the Lockheed Model 8 Sirius single-engine, propeller driven monoplane built at the request of Charles Lindbergh. Commissioned in 1929, note the Art Deco details that include teardrop wheel covers.

Lindy's "Spirit Of St. Louis"

Made by Hubley Mfg. Company
Lancaster - 1930 - 13 1/4" Wingspan

Pristine Plus Condition
\$3450



A near perfect facsimile of Lindbergh's iconic single engine monoplane, in which he completed the first ever transatlantic aviation crossing in May 1927.

The Sculling Toys of U. S. Hardware

The U. S. Hardware Company of New Haven, Ct. was in business for a very short period from 1894 until 1900. Their specialty was a small line of articulated cast iron novelty toys and fairy rubber balls. Today, in the world of antique toys, the sculling toys produced by U. S. Hardware hold a place of great fascination and paramount significance to collectors. They represent great ingenuity and a level of technical design that is almost unparalleled. Small and colorful, they are undeniably among the most exciting and kinetic toy creations of the late nineteenth century. They were made in three sizes; a nine inch scull with 4 oarsmen and coxswain, a fourteen inch scull with 8 oarsmen and coxswain and an impressive 19 1/2 inch scull with 8 oarsman and coxswain. Each size was offered with either naval rowers or collegiate rowers. As the toys are pushed or pulled, the forward and backward motion of the oarsmen, along with the rhythmic movement of their oars, realistically simulates the gliding of the sculls in the water. The coxswains always remain fixed.

Articulated Four Man Scull

Naval Rowers and Coxswain	Pristine Condition
By the US Hardware Company	\$4250
New Haven, Ct.	
Circa 1895 - 9" Long	



Articulated Eight Man Scull

Collegiate Rowers and Coxswain	Excellent Original
By the US Hardware Company	Condition
New Haven, Ct.	\$5250
Circa 1895 - 14" Long	



American Advertising Tobacco Tins

Mammy Roly Poly Tin

Mayo's Tobacco Canister
Richmond, Va.
Circa 1900 - 7" Tall

Excellent Condition
\$825



Shop Keeper Roly Poly Tin

Mayo's Tobacco Canister
Richmond, Va.
Circa 1900 - 7" Tall

Pristine Condition
\$950



Satisfied Customer Roly Poly Tin

Mayo's Tobacco Canister
Richmond, Va.
Circa 1900 - 7" Tall

Excellent Condition
\$1075



Scotland Yard Roly Poly Tin

Mayo's Tobacco Canister
Richmond, Va.
Circa 1900 - 7" Tall

Pristine Condition
\$1950



American Clockwork and Tin Toys

Mechanical Walking Soldier

Union General Benjamin Butler
By Ives, Blakeslee Company
Bridgeport, Ct.
Circa 1880 - 9½" Tall

Pristine Condition	\$5500
-----------------------	--------



Mechanical Walking Santa Claus

By Ives, Blakeslee Company
Bridgeport, Ct.
Circa 1880 - 9½" Tall
Provenance: Louis Hertz Collection

Pristine Condition	\$8500
-----------------------	--------



Mechanical Walking Sailor

By Ives, Blakeslee Company
Bridgeport, Ct.
Circa 1880 - 9¾" Tall
Provenance: Perelman Toy Museum

Excellent Condition	\$18,500
------------------------	----------



Mechanical Walking Chinaman

By Ives, Blakeslee Company
Bridgeport, Ct.
Circa 1880 - 9½" Tall
Provenance: Blair Whitton Collection

Excellent Condition	\$12,500
------------------------	----------



Mechanical Jackass

By Ives, Blakeslee Company
Bridgeport, Ct.
Circa 1880 - 9¾" Tall

Very Fine Condition	\$10,500
------------------------	----------



Mechanical Walking Black Man

aka "Old Black Joe"
By Ives, Blakeslee Company
Bridgeport, Ct.
Circa 1880 - 9½" Tall

Excellent Condition	\$6500
------------------------	--------



American Clockwork and Tin Toys

Somersaulting Acrobat

By Automatic Toy Works | Pristine Condition
New York City | \$6500
Circa 1872 - 7¼" Long



Mechanical Wood Chopper

By Ives, Blakeslee Company | Excellent Condition
Bridgeport, Ct. | \$18,500
Circa 1880 - 7¼" Long



Sparring Pugilists

Made by Ives, Blakeslee Company | Pristine Condition
Bridgeport, Ct. | \$12,500
Circa 1880's - 8¼" Long

"Peek - a - Boo" Cat in the Milk Pail

Ives, Blakeslee and Company | Pristine Condition
Bridgeport, Ct. - 1880 - 9" Tall | \$8500



American Clockwork and Tin Toys

Mechanical Walking Lady

By Ives, Blakeslee Company | Mint with Original Box
Bridgeport, Ct. | \$27,500
Circa 1880 - 10½" Tall
Provenance: Tom Anderson Collection



Mechanical Banjo Player

Made by Jerome Secor | Excellent Condition -
Bridgeport, Ct. | \$19,500
Circa 1870's - 9¾" Tall
Provenance: Bill Bertioia



Women's Rights Advocate

By Ives, Blakeslee Company | Mint with Original Box
Bridgeport, Ct. | \$24,500
Circa 1880's - 10¼" Tall



Preacher in the Pulpit

Costumed as a Baptist Minister | Pristine Condition
By Ives, Blakeslee Company | \$8500
Bridgeport, Ct.
Circa 1880's - 10" Tall



This extraordinary clockwork toy is thought to be an image of pioneering black suffragette Sojourner Truth. This exceptional specimen recently surfaced from the attic of a Long Island estate. It was given as a gift by the Bishop of Hempstead, Long Island to his sister Mrs. Harper as a Christmas present in 1884.

This version of Ives' iconic sermonizing preacher is exceedingly scarce when dressed as a Baptist Revival minister in seemingly endless flowing robes.

American Clockwork and Tin Toys

Mechanical Tricyclist

Made by Stevens & Brown
Forestville, Ct.
Circa 1880 - 10¾" Long

Pristine Condition
\$5500



Mechanical Tricyclist

Made by Althof-Bergmann
New York
Circa 1875 - 9½" Long

Excellent Condition
\$6800



Chinese Men Drinking Tea

Germany
Circa 1880's - 5½" Tall

Excellent Condition
\$4250



This fascinating quartet of Chinese men appear to discuss world events over their cups of tea. They are all elegantly dressed in aristocratic costume.

Mechanical Monkey Velocipede

Ives, Blakeslee Company
Bridgeport, Ct. - 1880 - 8 3/4" Long

Near Mint Condition
\$37,500

As a recreational vehicle for children's transport, the velocipede is one of the oddest and most unusual three wheeled contraptions to gain popularity in the nineteenth century. Hand held sticks generate forward motion rather than conventional foot pedals. Ives produced a discrete line of mechanical toys that attempted to emulate the experience of a life-sized velocipede ride. Most typically, they marketed this clockwork wonderment with a boy or girl rider. But they also produced this toy with Punch, a monkey rider and Uncle Sam. These latter examples are exceedingly scarce. To date, only three toy velocipedes have turned up with the monkey rider. The cast iron horse head at the front of the vehicle is also a very rare variation.



Goat Drawn Santa Sleigh

Made by Althof-Bergmann
New York - Circa 1880 - 20 1/2" Long

Overall Excellent Condition
(Substantial restoration to the body of the sled)
\$52,500



Hands down, this remarkable toy represents one of the greatest achievements in toy design in the 19th century. When wound for operation, two goats will guide Santa's sleigh across the parlor floor as they gallop up and down. For his part, Santa appears to lean forward to coax his magical beasts forward, drawing the sleigh across the star strewn sky.

For many years, there was only one extant example of this beautiful toy and it was proudly displayed as part of the Barenholtz Collection. It passed through the hands of several collectors, each time fetching in excess of \$150,000. Recently, a second example came to light and was sold at Noel Barrett Auctions for \$97,500. This particular sleigh was also recently unearthed from an old time doll collection. The goats retained much of their original paint. Sadly, the body of the sled was in such a poor state of preservation as to need significant restoration. Nevertheless, it is just the third specimen to ever come to market.

American Clockwork and Tin Toys



"Broadway & 5th Avenue" Omnibus

By the George Brown Company
Forestville, Ct. - 1875 - 12" Long
Nominal Restoration to Rear Door
Excellent Condition
\$27,500

At the close of the nineteenth century, these stately omnibuses ran up and down the north/south avenues of Manhattan. In an era of intense urban expansion, the city's burgeoning population was often ferried around town by these horse-drawn vehicles. They effectively connected residential neighborhoods with commercial districts and the workplace. And when Central Park opened to the public in 1873, these same omnibuses brought throngs of elated people from the southern reaches of the city northward for a day of recreation.



Covered Depot Wagon

By Francis, Field and Francis
Philadelphia - Circa 1860 - 14" Long
Excellent Condition
\$18,500

This type of open stagecoach was often referred to as a platform wagon. They were used almost exclusively for short trips, perhaps from a rail depot into town or between two adjacent communities. American tin toys of this early vintage are only rarely found in such a large scale as this wonderful Depot Wagon. All of the painted details and flourishes were done by hand.

American Clockwork and Tin Toys

“Fulton” Paddlewheel Steamboat

Probably Althof-Bergmann
New York - 1875 - 14” Long
Provenance: Tom Anderson Collection
Weiss Family Collection

Very Fine Condition
\$9500



Broadway & Lexington Avenue Trolley

Produced by Converse Toys
Winchendon, Ma.
Circa 1900 - 12½” Long

Pristine Condition
\$6500



Before the city’s renowned underground transit system (the subway opened in 1903), New York City residents navigated the streets with the use of horse drawn carriages, omnibuses and trolley cars. This vividly lithographed clockwork toy depicts the electric trolley system that worked for a brief time along several of Manhattan’s avenues. It is perhaps the single greatest toy ever created that depicts New York City transit.

“Plymouth Rock” Paddlewheel Steamboat

Probably Althof-Bergmann
New York - 1880 - 15” Long

Excellent Condition
\$8500



Girl & Dog Rocking Bell Toy

By Althof-Bergmann
New York
Circa 1880 - 7" Long

Excellent Condition
\$7250



"Firefly" Locomotive

By Merriam Manufacturing
Durham, Ct.
Circa 1880's - 7½" Long

Pristine Condition
\$4250



Equestrian on Horseback

By Althof-Bergmann
New York
Circa 1880 - 4" Long

Pristine Condition
\$2250



Express Wagon with ABC Blocks

By Merriam Manufacturing
Durham, Ct.
Circa 1880's - 14" Long

Pristine Plus Condition
\$4850



Monkey Riding Goat Bell Toy

By Althof-Bergmann and
Gong Bell Toys
New York
Circa 1880 - 9¼" Long

Pristine Condition
\$9500



Camel Bell Toy

By Althof-Bergmann
New York
Circa 1880 - 9¼" Long

Provenance: Barenholtz Collection
Illustrated Prominently on Page 111
Excellent Condition - \$5500





Horse Balance Toy
on a Wheeled Base
Made by Hull & Stafford
Clinton, Ct. - Circa 1870 - 9¾" Tall
Pristine Condition - \$10,500

Though mass produced, early American tin toys often resemble tiny folk art jewels because of their ethereal form and primitive silhouette. This kinetic balance toy is a perfect illustration of the pleasing effects of design minimalism.



Mechanical Horse Trainer

By Althof-Bergmann

New York - Circa 1871 - 9" Diameter

Excellent with Cardboard Box - \$18,500

This is one of the most fascinating early clockwork toys ever made. It was patented in the period just after the Civil War. The mechanism is cleverly housed inside the body of the horse. When wound, the horse and acrobat would roll straight forward in the hoop. When a string connects the trainer, who is stabilized on a cast iron base, the hoop will now run in a circle around him.

American Clockwork and Tin Toys



Drum Dancer

Ives, Blakeslee Company
Bridgeport, Connecticut
Circa 1880 9 1/2" high.
Excellent Plus - \$11,500

Daughter of the Regiment

Ives, Blakeslee Company
Bridgeport, Connecticut
Circa 1880 9 1/2" high
Excellent Plus - \$4200



Extremely rare with marching soldiers instead of eagles adorning the drum. Retains its original wooden box with paper label

A Cock Fight

Ives, Blakeslee and Company
Bridgeport, Connecticut
Circa 1875



Near Mint
\$14,500

An extremely rare clockwork toy. We know of only three examples to exist. Four roosters battle atop the box in realistic fashion.



The Juggler

Ives, Blakeslee Company - Bridgeport, Connecticut - Circa 1880
Excellent Plus - \$47,500

One of the rarest, largest and most desirable of all American clockwork toys is the "Juggler". This toy was most likely manufactured as a trade stimulator. It's impressive 16 inch height along with it's complex movements make it one of the truly great toys of that era. The finest of only three known examples.



American Clockwork and Tin Toys

Team of Galloping Horses

Whittaker, Ct. - Circa 1880. | Excellent Plus
Horses measure 15" long | \$9500

Entire toy with detachable
push stick measures 33".



The Cakewalk

By Automatic Toy Works
Connecticut
Circa 1870 - 9" high

Excellent Plus
\$7500



Described as a "Splendid Window Attraction", when wound the vaudevillian dancers would move in a lively and comical manner. The wholesale cost of the toy was \$3 at the time, a large sum of money. One of only a very few known to exist this toy was once part of the Bernard Barneholtz collection and can be seen pictured on page 195 of his book.



Rare & Important Lion Hose Reel

Made by the George Brown Company
Forestville, Ct. - Circa 1875
Good "as found" Condition
\$22,500

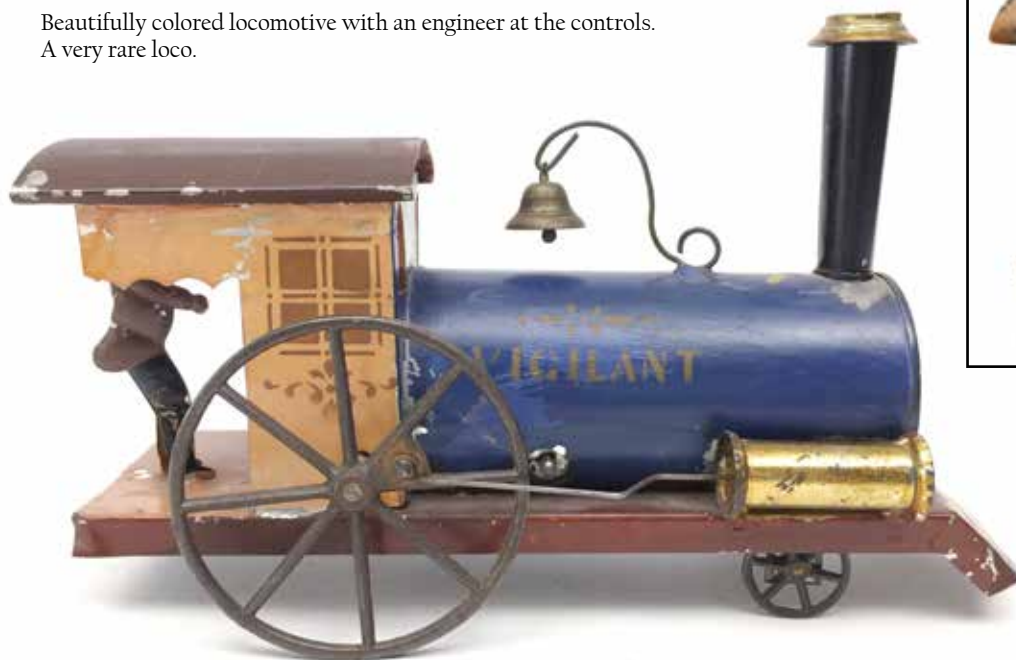
In the field of early American tin toys, fire toys are the rarest, most significant and most valuable. This magnificent Hose Reel recently surfaced from the attic of a house in Pennsylvania. It was lacking the reel and some of the wire adornment. These have been replaced, nevertheless, it is an exceedingly important early toy.

American Clockwork and Tin Toys

“Vigilant” Clockwork Locomotive with Engineer

Hull and Stafford | Excellent
Clinton, Ct. - 1880 - 9” Long | \$6200

Beautifully colored locomotive with an engineer at the controls.
A very rare loco.



“Nevada” Clockwork Locomotive

J. & E. Stevens | Near Mint
Cromwell, Connecticut | \$6500
Circa 1890





“Rocket” Clockwork Exploding Locomotive

Ives, Blakeslee and Company
Bridgeport, Connecticut - Circa 1875 . 11 1/2" long
Excellent Plus - \$9500

What has to be the rarest of all locomotives. This “Rocket” is clockwork driven and designed to explode as it travels, blasting its boiler, roof and smokestack in the process. It is a miracle that all of the original parts are present. A truly rare item.



American Clockwork and Tin Toys

Waltzing Couples with Flags

By Althof-Bergmann

New York - 1875 - 9 1/4" Long

Very Good Condition

\$7500



This is a toy that collector Barney Barenholtz acquired late in his lifetime. He absolutely adored it, but he passed it on to Tom Anderson when Tom expressed how much he loved it also.

Circus Menagerie Hill Climber

Made by D. P. Clark

Ohio - Circa 1900 - 15" Long

Pristine Condition

\$1850

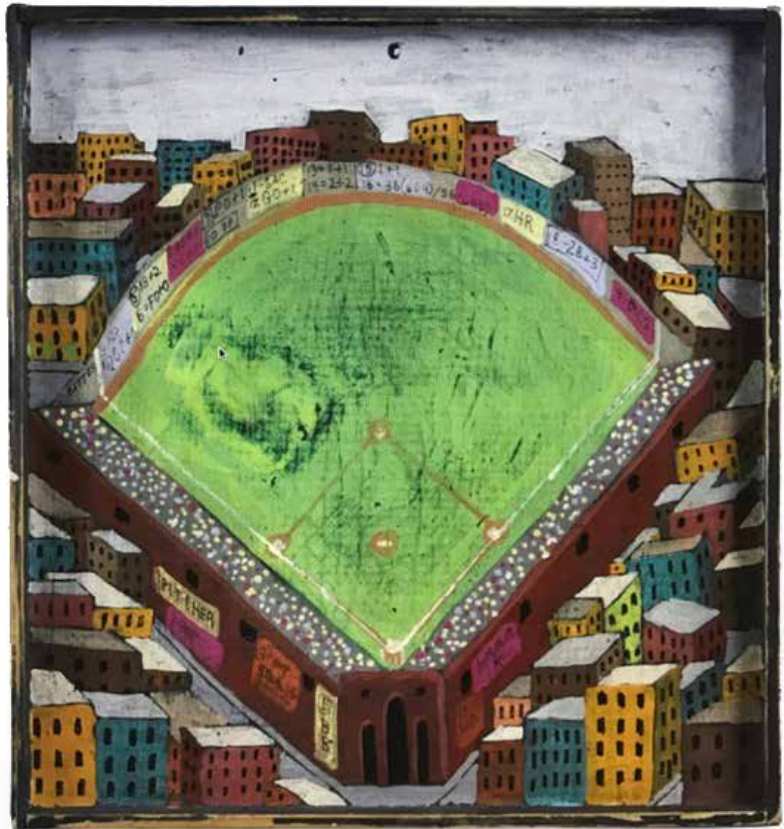


This is the most beautiful example of the rare Hill Climber to ever hit the market. You could literally look for decades before you would find one as beautiful as this.

Baseball Dice Game

American - Circa 1940's
 Excellent Condition
 \$4500

This wonderfully whimsical homemade children's game was used with three dice cubes. Various numerical permutations of the rolling of the dice, from as little as three ones to as great as three sixes, instruct and inform the action of the game, thereby determining which team is at bat and which is on the field. Base hits, strikes, balls and outs are all chronicled on the separate instruction sheet that accompanies the game board. Brilliantly devised and painted, the urban setting might be meant as a representation of Yankee Stadium in the Bronx or Ebbets Field, the home of the Brooklyn Dodgers. The intense color palette and the multiple perspective angles of the design are stylistically reminiscent of the work of folk art masters Ralph Fasanella and Vestie Davis.



Horse on Ornate Wheeled Base

India - 1940 - 19" Long x 22" Tall | Pristine Condition
 \$3750



Man Sawing Floor Planks Whirligig

Pennsylvania - 1925 - 24" Tall | Pristine Condition
 \$8500



Folk Art Toys

Felix the Cat

Jointed Figures
American - Circa 1935
4" and 8" Tall Respectively

Excellent Condition
\$1450



Mickey Mouse Bank

Cast Iron Version
French
Circa 1930 - 9" Tall

Excellent Condition
\$4500



Hippodrome Parisien

Made by Brevete
French - Circa 1920
12½" Diameter

Pristine with Box
\$2850



Donald Duck

Jointed Figure
Made by Knickerbocker Toys
American
Circa 1935 - 8½" Tall

Pristine Condition
\$1650



Bull & Bear Cutouts

American
Circa 1910 - 9" Tall

Near Mint Condition
\$950



WWI Biplane

American
Circa 1920
20" Long x 17" Wingspan

Pristine Condition
\$3500



Fire Hydrant

American
Circa 1930 - 9" Tall

Pristine Condition
\$950



Train Station

English - Circa 1920 - 12" Long
Excellent Condition - \$1200

"C. P. Huntington" Locomotive

American - Circa 1910 - 9½" Long
Excellent Condition - \$1850



"America" Locomotive & Tender

American
Circa 1910 - 47" Long

Excellent Condition
\$4250



Folk Art Toys

Young Bugler on Horseback

A Most Extraordinary Rocking Toy
Germany - Circa 1880's
9 1/2" Long x 9 1/2" Tall
Pristine Condition
\$8500

Upon it's discovery, David Pressland enthusiastically affirmed that this rocking toy was among the greatest German papier-mâché toys he had ever seen.



Colossal Doberman Pinscher Squeak Toy

Germany - Circa 1875
Toy is 9 1/2" Tall - Base is 8 3/4" x 3 3/4"
Pristine Condition
\$7500

Arguably, the most impressively scaled and sensitively rendered squeak toy to ever hit the marketplace. The gold foil papered collar and lock are made from the same type of paper as Dresden Christmas ornaments.



Admiral Dewey Waving the Flag

Probably German - Circa 1900 Pristine Condition
 5 1/2" Long x 8" Tall \$2800

With his victory at Manila Bay in the Spanish-American War, George Dewey became a household name and a true American Naval hero. This rare and unusual German platform toy is a great commemorative homage to him.



Plantation Dancers In Cabin

American - Circa 1890 Pristine Condition
 6 3/4" Deep x 6 3/4" Tall x 9" Long \$9800
 Provenance: Barenholtz Collection



When the crank is turned clockwise, the banjo player appears to strum his instrument and the dancers jig up and down. All the while, the ratchety plink plink music is piercing the air. This is truly one of the most extraordinary folk themed toys we have ever encountered.

Various Tin Novelty Toys

Tinplate Sedan with Sunroof

Made by Wells Ltd. Company | Pristine with Box
London, England | \$2750
Circa 1930's - 14" Long



Tinplate Rolls Royce

Made by the Mettoy Company | Excellent Condition with Box
English | \$2750
Circa Late 1930's - 14" Long



G - Man Pursuit Car

By Louis Marx Toys | Pristine Condition
New York | \$750
Circa 1930's - 14" Long



Two Tone Sedan

By Gebruder Marklin
German
Circa 1935 - 15" Long

Excellent Condition
\$3250



Blue Coupe

With Battery Powered Lights
English
Circa 1930 - 13" Long

Pristine Condition
\$1850



Blue Sedan

Japanese
Circa 1935 - 11½" Long

Restored Condition
\$1850



Various Tin Novelty Toys

Horseless Carriage

By Wilkins Hardware Company
Keene, New Hampshire
Circa 1905 - 9" Long

Excellent
Condition
\$1650



Gas Pumps

American - Circa 1930
8" and 9½" Tall

Excellent
Condition
\$675



Parcel USM Post

By Wilkins Hardware Company
Keene, New Hampshire
Circa 1910 - 7" Long

Pristine
Condition
\$1450



Fageol Bus

By Kingsbury Toy Company
Keene, New Hampshire
Circa 1928 - 17" Long

Excellent Condition
\$1800



Touring Car

With Georgian Windows
Made by Guntermann
German
Circa 1912 - 9" Long

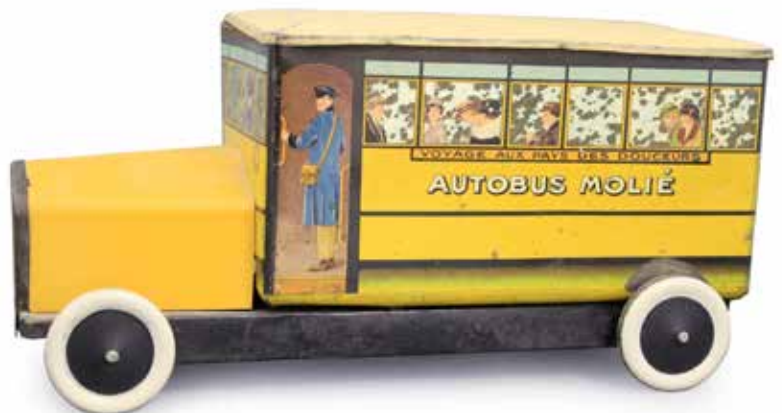
Very Fine Condition
\$4250



Autobus Molié

Biscuit Tin
By G. de Andreis & Cie
French
Circa 1920 - 11½" Long

Very Fine Condition
\$2250



Scarce Open Touring Car

By Issamayer
Germany
Circa 1912 - 6 1/2" Long

Pristine Condition
\$3850



A highly unusual German novelty toy that appears to imitate Lehmann's "Anxious Bride" toy. However, when this toy is wound, the action is even more comical. The chauffeur's neck shrinks and elongates and the fancy dressed lady passenger waves to her onlookers.

Children Sledding

Made by Doll & Cie.
Germany
1925 - 17" Long

Near Mint Condition
\$2750



This is one of the most unusual steam toy attachments anyone has ever seen. As the toy is operated, we witness a series of adventurous sledders coming courageously down the hill at break neck speed.

Various Tin Novelty Toys

UHU

Ernst Paul Lehmann
Brandenburg Germany
Circa 1920 - 9" Long

Excellent
\$2750



Tut Tut

Ernst Paul Lehmann
Brandenburg Germany
Circa 1920 - 6 3/4" Long

Pristine
\$3200



In original box

Anxious Bride

Ernst Paul Lehmann
Brandenburg Germany
Circa 1920 - 8 1/2" Long

Excellent
\$2400



Ampol

Ernst Paul Lehmann
Brandenburg Germany
Circa 1920 - 5" Long

Excellent
\$2200



Autobus

Ernst Paul Lehmann
Brandenburg Germany
Circa 1920 - 7 1/2" Long

Excellent
\$1700



Mikado Family

Ernst Paul Lehmann
Brandenburg Germany
Circa 1920 - 6" Long

Excellent
\$2400



Baldur

Ernst Paul Lehmann
Brandenburg Germany
Circa 1920 - 9 1/2" Long

Excellent
\$2000



Duo

Ernst Paul Lehmann
Brandenburg Germany
Circa 1920 - 7 1/2" Long

Excellent
\$2400



EPL I Zeppelin

Ernst Paul Lehmann
Brandenburg Germany
Circa 1920 - 7" Long

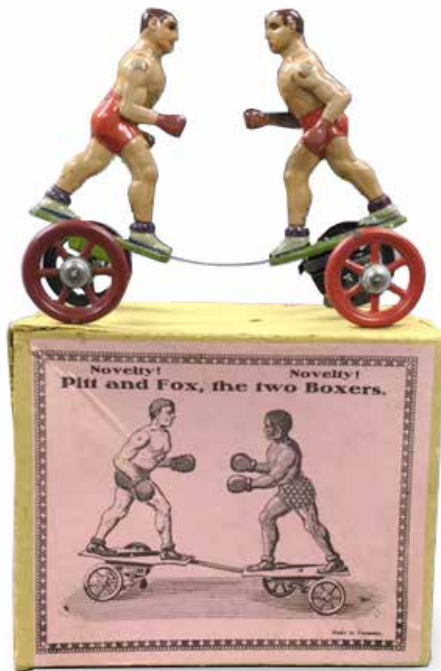
Excellent
\$950



Various Tin Novelty Toys

"Pitt and Fox" - The Two Boxers

Germany
 Circa 1920's - 6 3/4" Long | Mint in Original Box \$3250



Amusement Park Chairs Ride

American - Circa 1920 | Pristine Condition \$875
 5" Diameter x 11" Tall



Lehmann Motor Coach

Germany
 1910's - 5" Long | Pristine with Box \$1500



Hi-Way Henry Jalopy

By George Fischer
 Germany - 1930 - 10" Long | Excellent Condition \$3450



La Petite Marchande

By Ferdinand Martin
 Paris - 1900's - 7 1/2" Long | Mint in the Original Box \$4800



Various Tin Novelty Toys

Happiness in the Corner

George Heyde Company
Dresdren Germany - Circa 1910

Excellent Plus
\$1800



Three 90mm figures of life on the farm. From a play by Hermann Sudermann.

Satyr Nodding Band

George Heyde Company
Dresdren Germany - Circa 1910

Excellent Plus
\$3200



Set of six 90mm nodding Greek Satyr's playing violins, tambourine, cymbals, trumpet and the French horn.
The Satyr's were attendants to the mythological Bacchus.

Threshing Machine

Made by Gebruder Bing
Germany - 1902 - 10" Long

Excellent Condition
\$8500



This toy is pictured in "The Art of the Tin Toy" by David Pressland page 106.

Lamp Posts with Mailboxes

By Gebruder Marklin Company and Gebruder Bing
Germany - 1910 - 11" & 11 1/2" Tall
Rare, made for the American market.

Excellent Condition
\$3500

Early Automotive Vis-a-Vis

Made by Sigmund Gunthermann
Germany - 1905 - 9" Long

Excellent Condition
\$9500



The "Boston" Steam Pumper

Made by Jean Schoenner Company
Nuremberg Germany - 1900 - 14 1/2" Long

Excellent Condition
\$38,500



At this time, there are only two known extant specimens of this sensational early steam powered toy. Includes original period Pfeiffer driver and original burner.

German Toy Boats

“Möve” Gunboat - Live Steam

Made by Gebrüder Bing
Germany - 1904 - 22” Long

Excellent Condition
\$12,500



Gun Boat

George Carrette
Germany
Circa 1900 - 21” long

Excellent Plus
\$11,500



Terrific clockwork driven gun boat. Measures 14” to top of mast.

Amerika Passenger Liner

Gebruder Marklin Company | Excellent
Nuremburg, Germany | \$18,500
Circa 1915 18" long.



This is the rarest of the 5026 Series Liners being propelled by hot air. They are known as "Putt Putt" boats. In most live steam driven boats the boiler produces steam which is used to turn the propellers. In a "Putt Putt" the steam is exhausted directly behind the vessel. As it bubbles to the surface it creates a "putt putt" noise. These boats do not have propellers and are very difficult to find. Notice the unusual German spelling of "Amerika". A wonderful addition to any collection.

HMS S4 Torpedo Boat

Gebruder Marklin Company | Excellent Plus
Nuremburg, Germany | \$48,500
Circa 1907 - 20" long



An exceptional completely original example of this highly desirable Torpedo Boat. This clockwork example is in the early green and black color scheme.

German Toy Boats

Battleship

Gebruder J. Fleischmann | Excellent
Germany - Circa 1912 - 17" Long | \$4200

Clockwork driven battleship.
Provenance Richard Claus Collection



Torpedo Boat - Medium

Gebruder Bing | Excellent Plus
Germany - Circa 1904 - 10" Long | \$3600

Clockwork driven Torpedo Boat. This warship contains a clockwork mechanism which first propels the boat forward, then into a 180 degree turn back to port, as well as firing a time-delayed spark cap. This imaginative and complex mechanism greatly adds to the appeal of this wonderful toy.



Kasuga Torpedo Boat - Large

Gebruder Bing | Excellent Plus
Germany - Circa 1904 - 19" Long | \$4400

Clockwork driven Torpedo Boat. This warship has the same complex mechanism as the aforementioned.



Leviathan Passenger Liner

Gebruder Bing | Excellent
Germany - Circa 1923 - 19" Long | \$4800

Clockwork passenger liner.



Small Naval Coastal Gun

Gebruder Marklin Company
Nuremburg, Germany - Circa 1908

Near Mint
\$8500



This Marklin Coastal Gun features one staircase, a brass barrel gun and is finished in light blue. This example has the only known original box with pellets and the instructions for this desirable gun.

Small Naval Coastal Gun

Gebruder Marklin Company
Nuremburg, Germany - Circa 1910

Excellent
\$2400



A later gun finished in green with a tin barrel.

Large Naval Coastal Gun

Gebruder Marklin Company
Nuremburg, Germany - Circa 1908

Excellent Plus
\$7500



The largest of Marklin Coastal Guns features two staircases, has a brass barreled gun and is finished in light blue.

Steam Driven German Parade Ground

Doll & Cie
Germany - Circa 1936 - 7" long

Excellent Plus
\$2000



Tank - Handpainted

Germany - Circa 1915 6 1/2" long

Excellent
\$3500



Intricate movement.

German Toy Soldiers



Large Scale Wild West Set - 60 mm

George Heyde Company
Dresden Germany - Circa 1900
Pristine
\$42,500



The ultimate Heyde set. We know of only three complete examples of this 60mm set. It is a feast for the eyes, containing one of Heydes most dynamic and impressive vignettes ever produced. It depicts a mounted cowboy being gored by a buffalo with an Indian being trampled under hoof! Set also includes a frontier house, an oxen cart with oxen driver and a four horse stage coach being defended from attack. 65 Pieces.





Monumental North American Indian Warriors - 140 mm

George Heyde Company
Dresden Germany - Circa 1895
Pristine - \$14,500

Four very impressive 5 1/2" (140mm) figures. These intricately sculpted warriors brandish a knife, tomahawk and bow including a mounted warrior. We have never seen such magnificent figures.

German Toy Soldiers



American Encampment

Collection of US Troops for F.A.O Schwarz

George Heyde Company
Dresden Germany - Circa 1934
Pristine
\$58,000

This famous collection of sets was chronicled in Volume 24 Number 2 (Summer 2001) Old Toy Soldier, pages 28 -33. These 8 size 2 (48 mm) sets were offered in the Schwarz 1934 Christmas catalog and come with exceptional provenance. They are from the John Scheid Collection who was one of the premiere American pre- WWII toy soldier collectors. They are being offered only as a collection. The sets are the American Encampment originally tied, the extremely rare Trench Set, the General Staff originally tied, U. S. Signal Corps, Artillery Signal Detail, Field Telephone, Tank Attack and Bridging Set. This is a unique opportunity to own 8 extremely important American sets. A stunning 254 pieces.



General Staff

Trench Set



Tank Attack



Bridging Set



Artillery Signal Detail



US Signal Detail



Field Telephone

German Toy Soldiers

Aerodrome Set

George Heyde Company | Excellent Plus
Dresden Germany - Circa 1925 | \$14,500



A fantastic 48mm set depicting early aviation. This set retains the extremely rare original Heyde airplane with working control tower and ticket office. A wonderful civilian display.



Large Scale U.S. Display Set - 60 mm

George Heyde Company
Dresden Germany - Circa 1910
Excellent - \$16,000

A terrific 60mm display in its original wooden box. 69 pieces.
Set is missing one musician and one horse along with proper scale ambulance.

Prince of Wales

George Heyde Company
Dresden Germany
Circa 1920 120mm
Pristine - \$3200



French Officer

George Heyde Company
Dresden Germany
Circa 1910 120mm
Excellent - \$2650



Exceptional Kaiser Guillaume II

NORIS
Germany - Circa 1895 - 120mm
Excellent - \$3800



Exceptional Life Guard

NORIS
Germany - Circa 1895 - 120mm
Excellent Plus - \$5000



German Toy Soldiers

Flotilla

George Heyde Company
Dresden Germany - Circa 1910

Excellent
\$2000

Seven ships with 2 sets of waves
in original box.



Flotilla with Armed Escort

Allgeyer
Germany - Circa 1890

Excellent Plus
\$3400

Exceptionally early set was used as
a store display. It depicts a fleet of
sailing vessels along with an armed
escort of battleships and sailors.
In its original display case. 47 pieces.

Armed German Column

George Heyde Company
Dresden Germany - Circa 1907

Excellent Plus
\$3600

40mm demi round set in original large
display box. Contains pontoon sections,
artillery units, supply wagons and
ambulance. 63 pieces.



German Toy Soldiers

British Infantry

George Heyde Company
Dresden Germany - Circa 1920

Excellent
\$2500



Large display of size 2 figures in original box. From original family and retains original dust patina. 46 pieces.

Prussian Band with Music Stands

NORIS
Germany - Circa 1900

Excellent Plus
\$3200

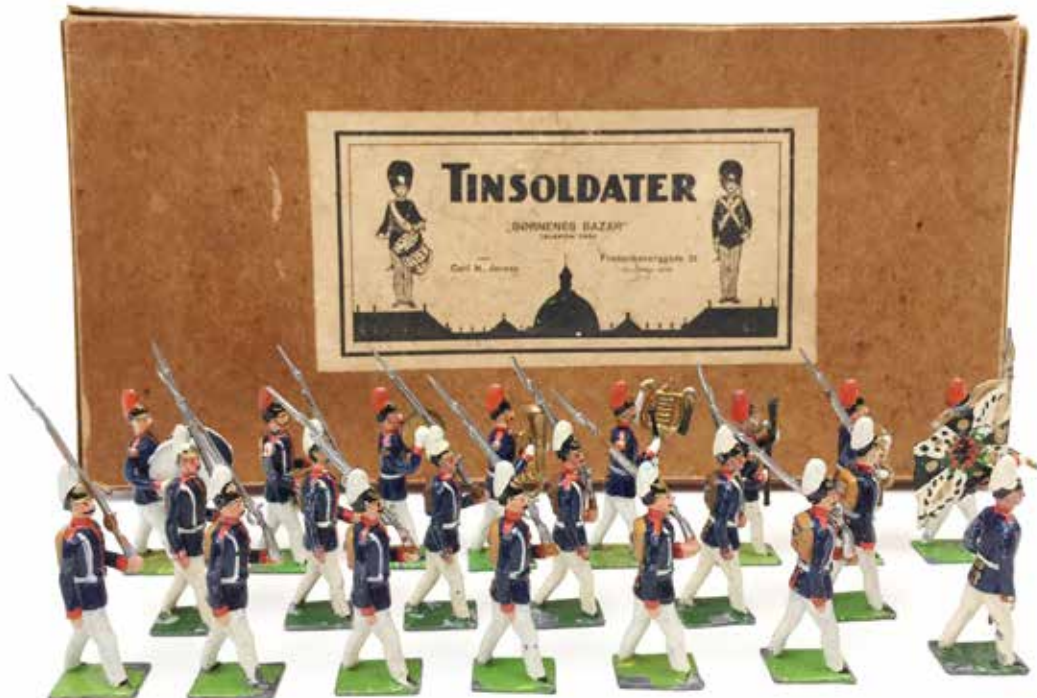


40mm demi round 26 piece set with a terrific polychrome label.

Prussian Marching Band and Infantry

George Heyde Company
Dresden Germany - Circa 1930

Excellent Plus
\$900



Twenty-one 48mm figures in Danish Distribution box.

German Toy Soldiers

7th Regiment Infantry Marching

George Heyde Company | Excellent Plus
Dresden Germany - Circa 1920 | \$750



Seventeen demi round 40mm figures tied to original tie card.

7th Regiment Infantry Marching

George Heyde Company | Excellent
Dresden Germany - Circa 1930 | \$1100



23 50mm figures in the original box. Several missing plumes

7th Regiment Infantry Marching

George Heyde Company | Excellent
Dresden Germany - Circa 1930 | \$600



Seven 60mm figures, one missing plume

British Infantry Marching - 70 mm

NORIS | Excellent Plus
Germany - Circa 1910 | \$2400



Nine 70mm figures

US Infantry

Possibly NORIS | Excellent
Germany - Circa 1900 | \$950



Terrific box made for US Export. 12 pieces 65mm. Interesting set in that the uniforms do not appear to be of any US Regiment or any French Regiment.

US Sailors in White

George Heyde Company | Excellent
Dresden Germany - Circa 1920 | \$950



Twelve 48mm figures in the original box.

US Army in Action

George Heyde Company | Excellent
Dresdren Germany - Circa 1910 | \$800



Twenty 48mm figurers in the original box

Britain Toy Soldiers

42nd Highlanders - Black Watch Set #11

W Britain | Excellent
 London England - Circa 1897 | \$4400



First version oval bases with plug hands.
 8 pieces including officer in original British Soldiers box.

United States Infantry Set #91

W Britain | Pristine
 London England - Circa 1938 | \$1650



On guard without mustaches. 8 pieces including officer tied in original Soldiers of the World box.

The Royal Dublin Fusiliers Set #109

W Britain | Pristine
 London England - Circa 1901 | \$9800



First version oval bases with all the dated paper labels present.
 Exceptional condition. 8 pieces in original slotted battle honors box.

The King's Royal Rifle Corps Set #98

W Britain | Excellent
 London England - Circa 1897 | \$3200



First version pigeon chested on oval bases.
 8 pieces including officer in original battle honors box.

Royal Marines Set #35

W Britain | Pristine
 London England - Circa 1935 | \$450



In original Types of the Royal Navy slot card box. 8 pieces.

Colours and Pioneers of the Scots Guards Set #82

W Britain | Pristine
 London England - Circa 1936 | \$650



Eight pieces tied in original Whisstock box. Has furled flag.

Infantry Officers of the British Army Set #1908

W Britain London England - Circa 1939 | Pristine - \$3600



Eight pieces tied in original box. A very rare and desirable set

Royal Engineers Pontoon Section Set #203

W Britain | Excellent Plus
London England - Circa 1930 | \$1200



Eight pieces including pontoon and bridging sections in original Whistock box.

Egyptian Army Camel Corps Set #48

W Britain | Excellent Plus
London England Circa 1925 | \$1500



Six pieces in original gold and black labeled box.

Egyptian Infantry Set #117

W Britain | Excellent Plus
London England - Circa 1925 | \$400



Eight pieces in original Whistock box.

Britain Toy Soldiers

Railway Station Staff Set #155

W Britain | Pristine
London England - Circa 1925 | \$1800



Fifteen pieces in the original Whisstock box. Includes the Station Master, Ticket Collector, Porters, Trolleys and Luggage.

Railway Station Staff Set #1256

W Britain | Pristine
London England - Circa 1925 | \$1800



Fifteen figures specially designed to go with "O" Gauge trains. In the original box.

Army Staff Car Set #1448

W Britain | Excellent Plus
London England - Circa 1938 | \$550



Split windshield, 2 pieces in original box.

U.S.A. Police for Gamages Set #428

W Britain | Excellent Plus
London England - Circa 1938 | \$4500



These specially ordered sets were designed solely for Gamages Department Stores in England. They are exceptionally rare. Tied in original Gamages box.

Royal Airforce Display for Gamages

W Britain | Excellent Plus
London England - Circa 1938 | \$6500



An exceptional, special assortment of Royal Airforce and Artillery figures. 28 figures in total are tied into the original Gamages box.

U.S.A. Infantry and Cavalry Set #1816

W Britain | Excellent Plus
London England - Circa 1939 | \$2500



Very rare 16 piece set tied in the original Types of the World's Armies box.

Royal Marine Light Infantry Band Set #1622

W Britain | Excellent Plus
London England - Circa 1938 | \$17,500



Perhaps the rarest and most desirable band of them all. The Royal Marine Light Infantry Band is the cornerstone of any great collection. 21 pieces in the original Types of the Royal Navy box. With impeccable provenance from the original owner.

Britain Toy Soldiers

Royal Horse Artillery in Steel Helmets Set #1339

W Britain
London England - Circa 1939

Near Mint
\$12,500



Extremely rare set featuring the highly desirable steel helmets. Tied in the original box and housed in protective leather bound case. This example has exceptional provenance. Bill Miele Collection to Dmitri Ilyinsky Collection. 13 Pieces.

U.S.A. Horse Artillery in Steel Helmets

Warren Manufacturing
Kenton Ohio - Circa 1938

Pristine
\$4800



Warren was the premiere manufacturer of toy soldiers just prior to WWII. The horses are particularly dynamic. 10 Pieces.

Volunteer Knock Down Set

American Soldier Company - Circa 1930

Pristine
\$2200



These sets were extremely popular. A pop gun was included in the set and the object was to shoot the figures and knock them down. 15 pieces including pop gun in original box.

Toyland Soldiers with Drum Corps

Milton Bradley Company
Springfield Massachusetts - Circa 1938

Excellent
\$700



Paper soldiers to shoot over. 49 Pieces in original box.

Racing Colours

Lord Astor Racing Colours

W Britain | Near Mint
 London England - Circa 1954 | \$550



RC2 in rare Race Course box.

John Hay Whitney Racing Colours

W Britain | Near Mint
 London England - Circa 1954 | \$750



Rare Race Course box.

Prince Aly Khan Racing Colours

W Britain | Near Mint
 London England - Circa 1954 | \$650



Lord Rosebery Racing Colours

W Britain | Pristine
 London England | \$550
 Circa 1938

Lord Londerry Racing Colours

W Britain | Pristine
 London England | \$550
 Circa 1938

Sir Hugo Cunliffe-Owen

W Britain | Pristine
 London England | \$600
 Circa 1938

Mrs. Dorothy Paget

W Britains | Pristine
 London England | \$600
 Circa 1938



Pair of Monumental Racing Jockeys

George Heyde Company | Excellent Plus
 Dresden Germany - Circa 1920 140mm | \$4800



Vintage Military Uniform



Colonel Uniform of the Coldstream Guards

English - Circa 1953

Pristine

\$5500



Beautiful Bearskin hat accompanies this complete uniform with belts, aiguillettes.
Mounted on mannequin (Additional shipping charge for mannequin).

Colonel Uniform of the 7th Hussars

English - Circa 1902 | Excellent \$12,500



This fantastic Edward VII period is complete with busby, and aiguillettes, Mounted on mannequin (Additional shipping charge for mannequin).

French Toys

Sapeur des Grenadiers 1812 Garde Imperial

Charles Sandre France - Circa 1920 | Excellent Plus
Measures 18" in height | \$6500



Le Funiculaire Des Alpes

Jeu de Societe | Excellent
France - Circa 1905 | \$3500



A lively and colorful game in which the handpainted children sled down the slide and score points. 20" long x 22" high x 8" wide.

Pompier Fire Brigade

FV | Excellent
French - Circa 1910 | \$7500



A terrific 16 piece set with fire pumper, ladder and water barrel. Complete with box which is in disrepair but does retain a very nice "Pompier" label.



JUGGLER