



Many of you wait with anticipation for this offering. Throughout the year we handle thousands of wonderful toys. The very best are saved for this special catalog.

Enhance your collection today.



TM

**RAY HARADIN**

Toys of Yesteryear

1039 Lakemont Drive  
Pittsburgh, PA 15243-1817  
(412) 343-8733  
Fax: (412) 344-5273  
email: raytoys@aol.com  
raytoys.com



Ray Haradin  
412-343-8733  
FAX 412-344-5273  
raytoys@aol.com

Consultant  
Leon Weiss  
917-991-7352  
leonweiss@me.com

Bre Day  
412-841-0623  
bremarieday@gmail.com

Consultant  
Steven Weiss  
212-729-0011  
sweiss57@me.com



[facebook.com/oldtoysoldier](https://www.facebook.com/oldtoysoldier)

[@oldtoysoldier](https://twitter.com/oldtoysoldier)

[@oldtoysoldier](https://www.instagram.com/oldtoysoldier)

[YouTube](https://www.youtube.com/channel/UC...) Subscribe to our channel - Ray and Bre Live

## Gebrüder Bing

Gebrüder Bing ("Bing Brothers") was founded in 1863 in Nuremberg, Germany by two brothers, Ignaz Bing and Adolf Bing. The company originally produced fine pewter and copper tableware before entering the then burgeoning field of toy production in 1880.

By the start of 20th century, a period also commonly referred to as the Golden Era of antique toys in terms of the recognition afforded a brief period of creative genius, Bing was the largest toy company in the world, rivaling its main competitor Marklin & Cie. every step of the way in their competition to capture the hearts, minds and imagination of the children of the rich and privileged around the world. Characteristic of this Golden Era period is the exceptional elegance of design, the superlative mechanics, the care and attention to even the smallest of detail, the highest caliber of finished paintwork and the unique glows of whimsy and joy.

Offered herein is a single owner lifetime collection of only the finest of surviving examples, a number of them simply unique to history, from the Golden Age of Gebrüder Bing production. It reflects a remarkable, brief period in European tin toy production, one that lasted only a handful of years, by a historical giant at the apex of its creative prowess. It is an unparalleled collection in exceptional condition that we have never before had the pleasure or privilege to be able to offer.



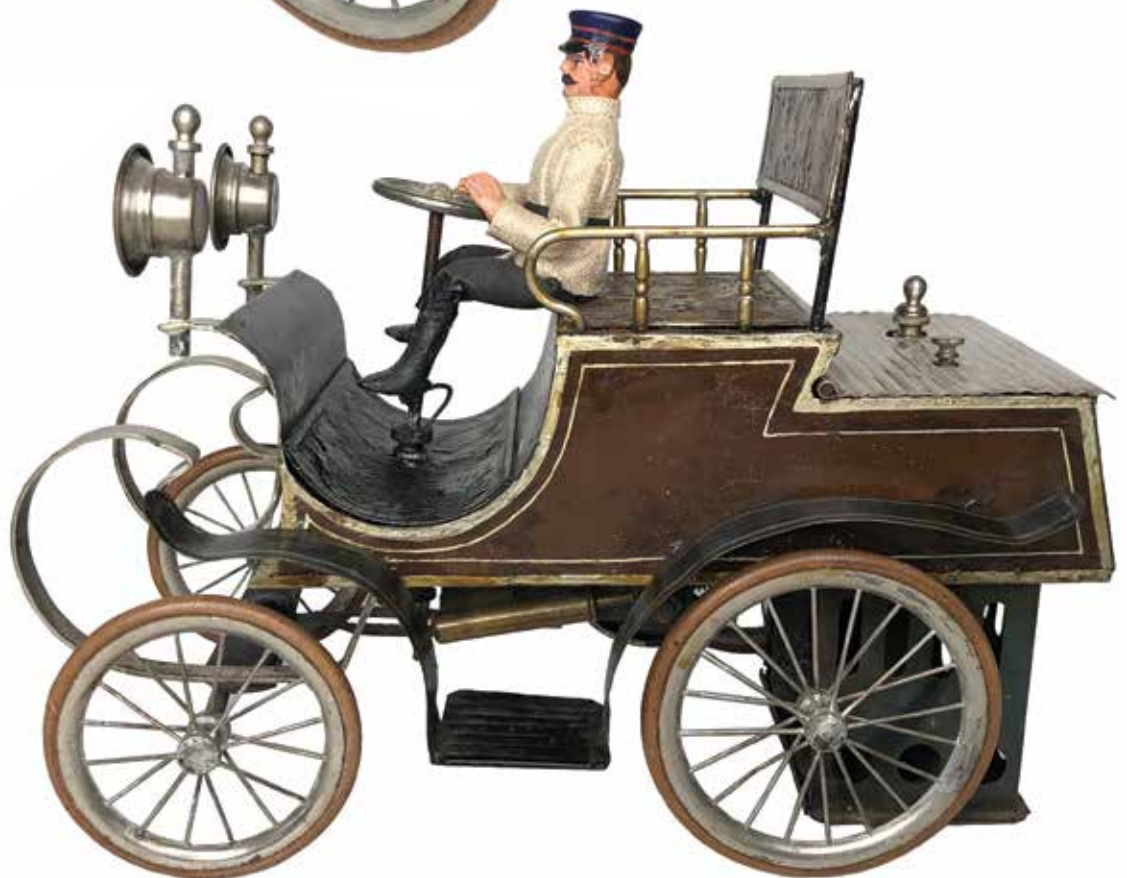




**Spider Steam Car**

Made by Gebruder Bing  
Nuremberg, Germany - Circa 1902 - 9" long  
Excellent Condition - \$27,500 [\(1\)](#)

From Bing's fabulous 1902 series  
this early steam driven vehicle is  
complete with original burner and  
period Pfeiffer driver.





## Bing Toys

### Open Tourer

Made by Gebrüder Bing  
Nuremberg, Germany - Circa 1900 - 7" long  
Pristine Condition - \$38,000 [\(2\)](#)

An immaculate example of this highly desirable clockwork early automobile includes original box and key.



**"Brake"**

Made by Gebrüder Bing  
Nuremberg, Germany - Circa 1902 - 10" long  
Excellent Condition - \$42,000 (3)



From Bing's fabulous 1902 series. The car is fitted with an automatic steering device which enabled it to run in an irregular circle. According to David Pressland, the most remarkable feature of this car is the paintwork, the quality of the lining and the finish that he believes is the best of any production toy. The toy includes original box and note of provenance from the past owner.







**Double Phaeton**

Made by Gebruder Bing

Nuremberg, Germany - Circa 1902 - 12 1/2" long

Provenance Don Kaufmann Collection

Excellent Condition - \$ 22,000 (4)

Clockwork driven.

**Ram Front Destroyer**  
Made by Gebruder Bing  
Germany - Circa 1898 - 30" long  
Excellent Condition - \$ 70,000 (5)



Exceptional boat with original wheeled stand and original shipping crate.

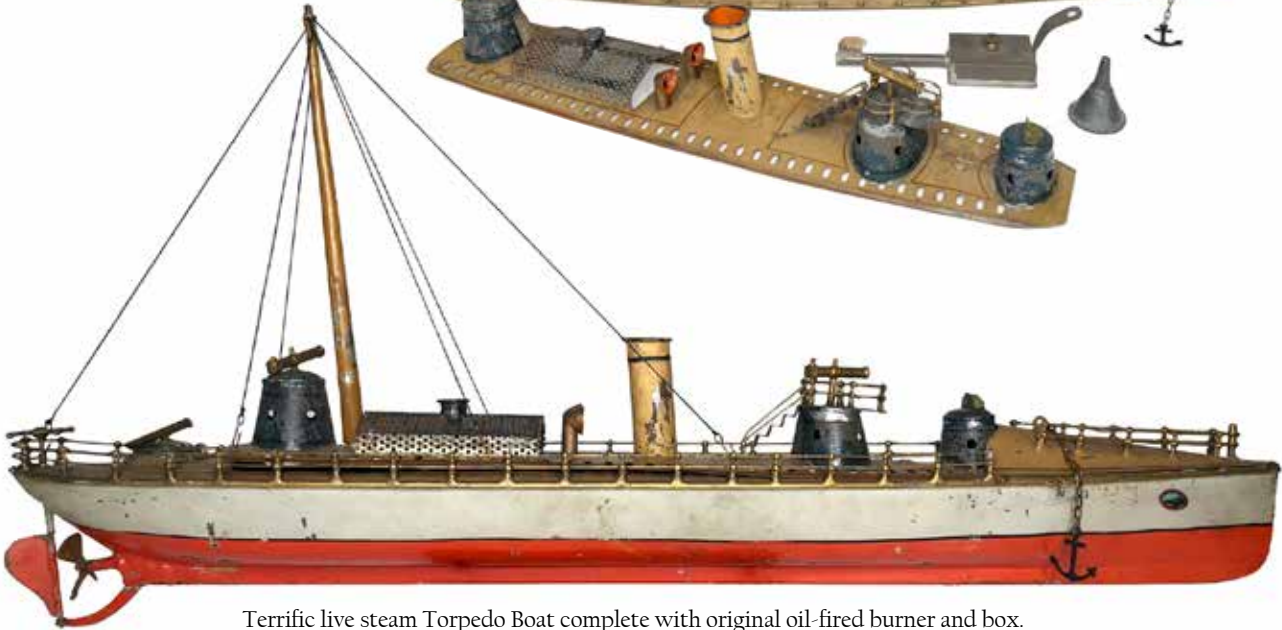




## Bing Toys

### Torpedo Boat

Made by Gebruder Bing  
Nuremberg, Germany - Circa 1902 - 22" long  
Provenance Richard Claus Collection.  
Excellent Condition - \$ 16,500 (6)

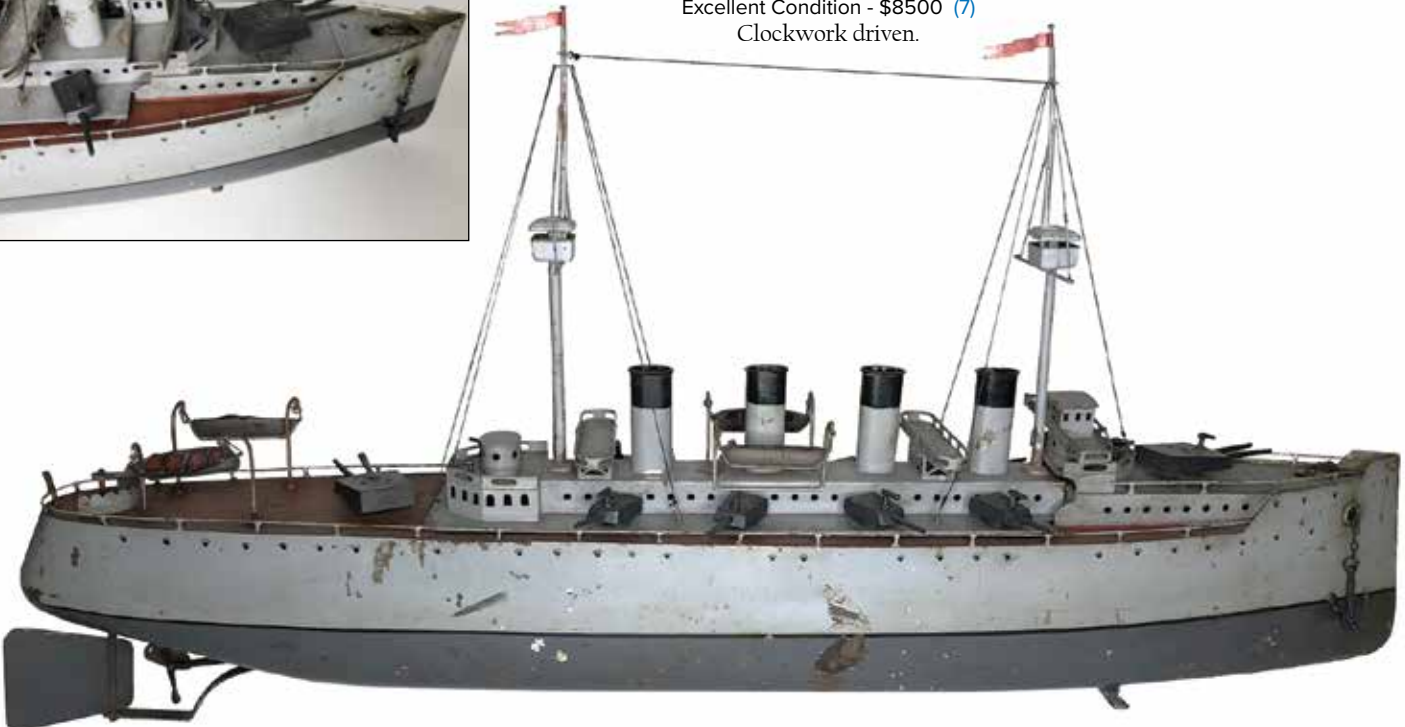


Terrific live steam Torpedo Boat complete with original oil-fired burner and box.



### Battleship

Made by Gebruder Bing  
Nuremberg, Germany - Circa 1909 - 32" long  
Excellent Condition - \$8500 (7)  
Clockwork driven.



**Victoria Steamer**

Made by Gebruder Bing  
Nuremberg, Germany - Circa 1898 - 14 1/2" long  
Excellent Condition \* \$18,500 [\(8\)](#)



An exceptional live steam riverboat, complete with burner and flag.  
Paint crazing blistering on starboard side from the one time this vessel was fired.

**Louise Riverboat**

Made by Gebruder Bing  
Nuremberg, Germany - Circa 1902 - 23" long  
Excellent Condition - \$16,500 [\(9\)](#)



Exquisite clockwork Riverboat with original wheeled stand.



## German Toys



Ernest Plank submarines are considered by many to be the epitome of submarine toy design. Offered here are two pristine working examples with their original boxes.



### Submarine

Made by Ernest Plank  
Germany - Circa 1905 - 14 1/2" long  
Provenance Richard Claus Collection  
Pristine Condition - \$ 7500 (10)

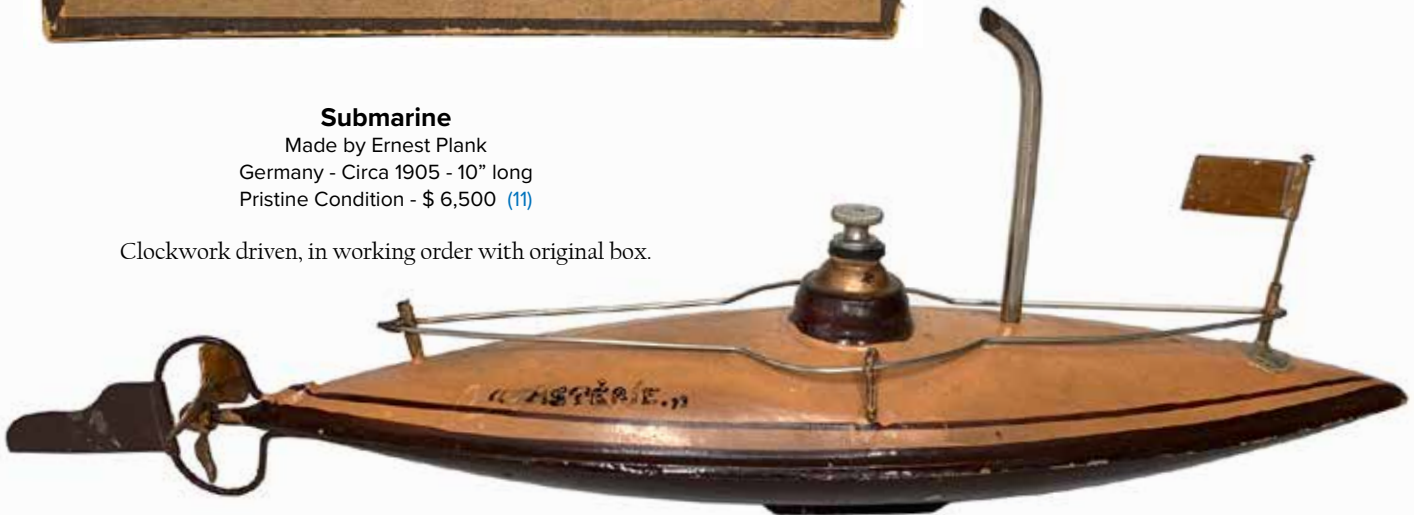
Clockwork drive in working order  
with original box.



### Submarine

Made by Ernest Plank  
Germany - Circa 1905 - 10" long  
Pristine Condition - \$ 6,500 (11)

Clockwork driven, in working order with original box.



### River Launch

Made by Issmeyer  
Germany Circa 1890.  
\$950 (12)

## **“La Plata”**

Four Funnel Ocean Liner

Gebrüder Marklin & Cie.

Nuremberg - 1910 - 38"

Exquisitely Restored - \$45,000 (13)



Amongst collectors of European toys and trains, the product line of the Marklin Company is seen as preminent, positioning them in a league far above that of the other toy makers in the period. They offered an exclusive line of vividly painted planes, trains, cars and boats. The attention to detail in their work has never been matched. Of course, production values with an unyielding penchant for perfectionism came at a great cost to the consumer. A steam powered ocean liner like “La Plata” would have cost about \$2500 if you adjust for inflation and the value of money over the last century. When it was discovered, the “La Plata” was in a poor state of preservation. All the parts were there, but the paint required extensive conservation. A virtually identical Marklin liner in very superior condition sold at auction for \$270,000 some years back.





# Marklin Floor Train

## Floor Train

Made by Gebruder Marklin  
Nuremburg, Germany - Circa 1900 - 43 inches in length  
Excellent Condition - \$ 19,500 (14)

Wonderful Marklin floor train.  
Colorful pull toy complete with Marklin  
accessories and period luggage.









## European Toys

### Steam Engine Mohr

Made by Krauss, Mohr & Co.  
Germany - Circa 1900- 9" by 10 1/2" by 15"  
Excellent Condition - \$2300 (15)



### Tall Electric Arc Street Lamps

Made by Gebrüder Marklin  
Nuremberg, Germany - Circa 1902 - 18 1/2" high  
Excellent Condition - \$8500 (16)

A matching pair of exceedingly rare and elegant street lamps that retain their original bulbs.



### Rare Postal Street Lamp

Made by Gebrüder Marklin  
Nuremberg, Germany - Circa 1902 - 11" high  
Excellent Condition - \$7800 (17)

Rare, made for the American Market with working mailbox.



### Railway Semaphore

Made by Gebrüder Marklin  
Nuremberg, Germany - Circa 1902 - 9 1/2" high  
Excellent Condition - \$725 (19)



### Rare Marklin Oil Lamps

Made by Gebrüder Marklin  
Nuremberg Germany - Circa 1900  
7 1/2" high  
Excellent Condition \$8500 (18)

Beautiful matching pair.



**Two-Toned Coupe**  
with Rumble Seat  
Johan Distler & Company  
Germany - 1925 - 13"  
Excellent - \$1950 (20)



**Chauffeured Limousine**  
with Luggage Rack  
Hans Eberl & Company  
Germany - 1915 - 10 1/2"  
Pristine - \$3300 (21)

**Two-Toned Saloon Car**  
Karl Bub & Company  
Germany - 1925 - 15"  
Near Mint - \$4500 (22)



**Chauffeured Limousine**  
with Fancy Headlights  
George Carette Company  
Germany - 1920 - 13 3/4"  
Pristine - \$4850 (23)



## Novelty Toys



### Frog Entertainer

Guntermann Toys  
Germany - 1900 - 6 1/2"  
Excellent Condition - \$2500 (24)



### Elephant with African Rider

Guntermann Toys  
Germany - 1900 - 6 1/4" x 4 1/4"  
Excellent Condition - \$2850 (25)



### Rabbit Hiking with Pipe, Cane & Napsack

Guntermann Toys  
Germany - 1900 - 7 1/2"  
Very Fine Condition - \$1850 (26)



### Flapping Wing Duck

Guntermann Toys  
Germany - 1900 - 6"  
(One Wing Replaced)  
Good Condition - \$345 (27)



### Bear & Poodle Circus Performers

Germany - 1920 - 6" x 5 1/4"  
Excellent Condition - \$1250 (28)



### El Gaucho Horse Rider

Guntermann Toys  
Germany - 1900 - 7" x 6"  
(Some Tasteful Restoration)  
Excellent Condition - \$1250 (29)



### Unusual Shuffling Dancer

Guntermann Toys  
Germany - 1900 - 7 1/4"  
Expertly Restored - \$1075 (30)



### L'Autopatte Fruit Vendor

By Fernand Martin & Cie.  
France - 1910 - 8" Long  
Near Mint with Box - \$2700 (31)



### Ambling Mr. Pumpkin Head

Unknown Manufacturer  
French - 1900 - 8" Tall  
Pristine Condition - \$1450 (32)



**3 Clowns Novelty Car**  
Made by Hans Eberl Toys  
Germany - 1918 - 7 1/4"  
Excellent Condition - \$2700 (33)

When the toy is wound, the clowns bodies and heads move to & fro.  
The toy functions perfectly.



**Jiggs in a Bumper Car**  
Made by Nifty Toys  
Germany - 1920 - 5"  
Excellent Condition - \$2800 (34)



**Bobble Head Cigar Smoker**  
Papier-mâché & Wood Base  
Germany - 1910 - 7" Tall  
Excellent Condition - \$825 (36)

**#13 Clown Rollover Circus Car**  
Made by Hans Eberl Toys  
Germany - 1918 - 10" Long  
Excellent Condition - \$2450 (35)



This toy possesses one of the most unusual mechanisms in the world.  
When they toy is played with, it will actually roll over and then continue on its way.

**Seated Clown Musicians**  
Made by Guntermann Toys  
Germany - 1910 - 9" x 7 1/2"  
(Some Expert Restoration)  
Excellent Condition - \$2250 (37)



This is one of the most visually appealing platform novelty toys we have ever encountered.

**Bobble Head Foxy Grandpa**  
Papier-mâché & Wood Base  
Germany - 1910 - 8" Tall  
Excellent Condition - \$550 (38)





## Art Deco Sculpture

Ferdinand Preiss (1882-1943)  
Erbach in Bavaria, Germany  
Artistic output circa 1910 - 1943

Preiss has long been considered the greatest unsung artist working in bronze and ivory in the 20th century. For true lovers of Art Deco sculpture, his skill has absolutely no equal. Compared to his contemporaries, his figures are relatively small in scale, and yet, they are flawless in their anatomical proportion. The blending of ivory and other materials, most often bronze, is known as “chryselephantine” work. Despite its origin in antiquity, the term “chryselephantine” more commonly refers to sculpture from the early twentieth century. Alberto Shayo has noted that Preiss’ creations evince a visual language that perfectly express the style of his times. This collection of different models represents one of the most significant offerings of his work in a very long time.

### “Spring Awakening”

A Scarce All Bronze Edition  
Presented on a Socle Base  
Sculpted by Ferdinand Preiss  
Germany - 1925 - 13 3/4"  
Pristine - \$18,500 (39)



The “Spring Awakening” figure is one of Preiss’ most exquisite creations. A beautiful young girl is depicted as emerging from the deep slumber of winter. In her effort to shake off sleep and wake up, she tilts her head back to greet the warm radiance of the spring morning. This gesture allows her thick springy curls to reach her shoulders. Her upper body is nude. A scarf tied around her waist covers her pelvic and pubic area, and yet, it adds greatly to the erotic charm of the sculpture. Like a theatrical curtain, a flawlessly draped shawl extends from the girl's shoulders and gathers at her ankles. Preiss’ use of this garment imbues the sculpture with a “classical aura” that effectively softens the implicit sexuality of the girl. It thereby renders the artwork more visually acceptable to a potentially prudish customer. The “Spring Awakening” model is typically found in bronze and ivory. This is only the second time that we have seen an all bronze specimen of this figure.

### The “Con Brio” Dancer

An All Bronze Example on a  
Striped Onyx Pyramidal Base  
Sculpted by Ferdinand Preiss  
Germany - Late 1920's - 13"  
Pristine - \$27,500 (40)

Among collectors of Art Deco sculpture, Preiss’ “Con Brio” figure has always been hugely popular. With her dynamic carefree pose and her scanty costume, “Con Brio” must be interpreted as an iconic representation of the “Roaring Twenties”. Preiss presents us with a magnificent dancer precariously balanced on the toes of her right foot. Her arms are stretched both in front of her and behind her. Presumably, this helps her concentrate on her balance. She is shoeless and is dressed only in a bikini top and bottom. On her head, we find a sort of turban-like cloche hat. Usually, the term “con brio” is applied to music. Webster’s definition, “in a vigorous or brisk manner”, really seems appropriate for this great statue.



## **Capering Nude Dancer on a Variegated Onyx Base**

Sculpted by Ferdinand Preiss  
Germany - Late 1920's - 12"  
Pristine - \$16,500 (41)

In many details, this spritely nude dancer seems to draw its inspiration from the "Con Brio" figure from the same period. In this incarnation, however, she's elevated on the toes of her left foot rather than the right. Her headdress has been reduced to a mere sash tied to hold her bangs down. This allows for the further development of sculpted hair at the top of her head, a very nice added feature. Though small in scale, this figure is emphasized by very very bold movement. This represents an extremely rare figure that seldom comes to market.



## **An Exuberant Nude Silvered Bronze on a Scarce Flower Pot Base**

Sculpted by Ferdinand Preiss  
Germany - Late 1920's - 19 1/4"  
Pristine - \$18,500 (42)

Here again, we find Preiss' intense interest in balance and outstretched arms. The pose, with its blatant sense of sexual freedom, seems reminiscent of the work of the pioneering female choreographer Isadora Duncan. The figure appears to organically gather it's strength from the ground up. She's presented as an exotic flower born and reaching skyward from the figurative "soil" of the flower pot base. This is a very Rare & Desirable model from Preiss' oeuvre.



## Art Deco Sculpture

### Female Fencer with Stylish Bobbed Haircut

Rare Cut Corner Triangular Base  
By Ferdinand Preiss (1882-1943)  
Germany - Late 1920's - 7" Tall  
Pristine Condition - \$24,500 (43)



Though small in scale, this athletic female figure evinces a surprisingly powerful presence.



### Boy with a Bocce Ball

By Ferdinand Preiss (1882-1943)  
Circular Green & Black Onyx Base  
Germany - Early 1930's - 6 3/4" Tall  
Mint Condition - \$22,500 (44)

An absolutely magnificent specimen of this rare model.

### The Flapper Girl in a Very Flirtatious Pose

By Dr. Otto Poertzel (1876-1967)  
Germany - Late 1920's - 7" Tall  
Pristine Condition - \$10,500 (45)



Poertzel often collaborated with Preiss in the development of new models, however, this one is by him exclusively.



### Sunny Boy & Girl with Hoop

A Very Scarce Bronze Pair on Matching Green Onyx Bases  
Sculpted by Ferdinand Preiss  
Germany - 1930 - 11" & 11 1/4"  
Near Mint Condition - \$22,500 (46)

These patinated bronze children are extremely rare and desirable in this large format. Typically, they are found as smaller chryselephantine works. It's not really known why Preiss offered only certain of his models in an "all bronze" treatment like this stunning pair. This presents a very unique opportunity to acquire two very unusual sculptures by Preiss. Their flawless condition has no comparison.





**The Beach Dancer on a  
Bell Shaped Green Onyx Base**

Model aka "Con Motto"

Sculpted by Ferdinand Preiss

Germany - Late 1920's - 15" Tall

Pristine - \$75,000 (47)

Beach Dancer is one of the tallest and most impressive figures from Preiss' entire artistic output. The level of painstaking detail required to produce the haunting chryselephantine effects of this particular model is unparalleled. The ivory arms, legs, abdomen and head need to be in absolute perfect proportional balance with the bronze elements of her bathing suit in order to achieve the desired realism. The labor intense process required for this particular model (#1225) made it one of the most expensive that Preiss ever created. As a result, it seems that few were ever produced. Indeed, there are only three known examples of Beach Dancer in the world. In this light, Beach Dancer should be valued as the very pinnacle of Preiss' artistic ability.





### **The Scarf Dancer**

By Alexandre Kelety (1874-1940)

Hungarian - Late 1920's - 11" Tall

Pristine - \$6750 (48)

This magnificent statue really expresses the “new found” sexual freedom for women that developed in the 1920's. When considering the figure on its sociocultural merits, one is reminded of the bold modernity of D. H. Lawrence's two “sister heroines” from *Women in Love*. The technique of enameled paint used on the scarf was known as “crejo” decoration. Of the various Art Deco sculptors, Kelety, perhaps more than any other, was very fond of this decorative additive.



### **The Iron Maiden**

Erotic Transformational Bronze

Austrian - Circa 1910's - 10" Tall

Pristine - \$6500 (49)

The interest in hidden erotic figuration became fashionable during the ostensibly prudish Edwardian Era. In Austria, the makers of Vienna bronze statues satisfied the demand for sexualized depictions of women by hiding them beneath elaborate costuming and rigging them with surprise opening mechanisms. When closed, this sculpture resembles the medieval torture device known as the “Iron Maiden”.

However, when the trick mechanism is pushed, the doors swing open to reveal a nude young female. Contrary to the pain she should feel from the internally set spikes, she appears to be very calm and relaxed.



## Performer with Arched Back

On a Green Onyx Octagonal Base  
Sculpted by Ferdinand Preiss  
Germany - 1925 - 10" Tall  
Pristine - 38,500 (50)



This exotic showgirl is another very rare specimen by Preiss. Fewer than a handful are known to exist. Once again, to achieve the mind-blowing effects of the chryselephantine process, extreme attention must be paid to body and costume proportions.



## "A Night Out"

By Georges Rigot  
Bronze and Ivory on a Rhomboid  
Shaped Onyx Base  
French - Mid 1920's - 13 1/4"  
Pristine - 14,500 (51)

A coquettish young lady has stepped out for an evening on the town. She is outfitted in a flaring, knee length fur-trimmed coat and wears a sensible pair of heeled shoes. She throws her pretty head back confidently knowing the onlookers find her attractive.





## Still Banks



### 1882 Villa Bank

Kyser & Rex Company  
Philadelphia - 1880's - 5 1/2"  
Mint Condition - \$875 [\(52\)](#)



### Turreted Prison Bank

Kyser & Rex Company  
Philadelphia - 1880's - 5 1/2"  
Pristine Condition - \$825 [\(53\)](#)



### Home Savings Bank

with Lion Cub Finial  
J. & E. Stevens Company  
Cromwell, CT - 1891 - 6"  
Pristine Condition - \$425 [\(54\)](#)



### Building with Belfry Bank

Kenton Hardware Co.  
Kenton, OH - 1890's - 8 1/4"  
Pristine Condition - \$4500 [\(55\)](#)



### Globe Savings Fund

Kyser & Rex Company  
Philadelphia - 1888 - 7"  
Pristine Condition - \$5250 [\(56\)](#)



### London's Temple Bar

Sydenham & McOustra  
England - 1900 - 4"  
Excellent Condition - \$1150 [\(57\)](#)



### Presto Bank

Kyser & Rex Company  
Philadelphia - 1890's - 4 1/2"  
Pristine Condition - \$750 [\(58\)](#)



### English Country Villa

Sydenham & McOustra  
England - 1900 - 4"  
Excellent Condition - \$750 [\(59\)](#)





**Small Cupola Bank**

Red, White & Blue  
J. & E. Stevens Company  
Cromwell, CT - 1880's - 3 1/2"  
Very Fine Condition - \$325 (60)



**Deluxe Roof Bank**

Yellow, Green & Black  
Grey Iron Company  
Mount Joy, PA - 1900  
Pristine Condition - \$750 (61)



**Medium Cupola Bank**

Red, White & Blue  
J. & E. Stevens Company  
Cromwell, CT - 1880's - 4 1/4"  
Excellent Condition - \$375 (62)



**Large Crown Bank**

J. & E. Stevens Company  
Cromwell, CT - 1880's - 5"  
Excellent Condition - \$950 (63)



**Large House with Bay Window**

J. & E. Stevens Company  
Cromwell, CT - 1875 - 4 7/8"  
Excellent Condition - \$5250 (64)



**Large Crown Bank**

J. & E. Stevens Company  
Cromwell, CT - 1890's - 5"  
Excellent Condition - \$950 (65)



**City Bank with Crown**

J. & E. Stevens Company  
Cromwell, CT - 1880's - 6"  
Very Fine Condition - \$1650 (66)



**Home Mechanical Bank**

Without Dormer Windows  
J. & E. Stevens Company  
Cromwell, CT - 1880's - 5 1/2"  
Pristine Condition - \$2850 (67)



**Deluxe State Bank**

Gray, Yellow, Green & Red  
J. & E. Stevens Company  
Cromwell, CT - 1895 - 5 1/2"  
Excellent Condition - \$1250 (68)



## Still Banks



### Small Flat Top State Bank

Kyser & Rex Company  
Philadelphia - 1890's - 3 1/2"  
Fine Condition - \$750 (69)



### Hansel & Gretel

at the Witch's Cottage  
Austria - 1900 - 4"  
Pristine Condition - \$2850 (70)



### Small Flat Top State Bank

Kyser & Rex Company  
Philadelphia - 1890's - 3 1/2"  
Pristine Condition - \$1450 (71)



### Bank with Script Letters

Grey Iron Casting Co.  
Mount Joy - 1895 - 5 3/4"  
Near Mint Condition - \$575 (72)



### State Bank - Solid Door

Scarce 6 7/8" Tall Specimen  
Kyser & Rex Company  
Philadelphia - 1895  
Pristine Condition - \$625 (73)



### State Bank

Straight Letters - Solid Door  
Grey Iron Casting Co.  
Mount Joy, PA - 1890's - 5 1/2"  
Near Mint Condition - \$375 (74)



### Large Cupola Bank

Made for the Christmas Market  
J. & E. Stevens Company  
Cromwell, CT - 1880's - 5 1/2"  
Excellent Condition - \$625 (75)



### World's Fair Administration Building

American - 1893 - 6"  
Very Fine Condition - \$1150 (76)



### Large Cupola Bank

Made for the Christmas Market  
J. & E. Stevens Company  
Cromwell, CT - 1880's - 5 1/2"  
Pristine Condition - \$875 (77)



**Tiny State Bank**  
Kyser & Rex Company  
Philadelphia - 1895 - 3 1/2"  
Pristine Condition - \$325 (78)



**Indiana Silo Bank**  
"A Good Place to Put Money"  
American - 1920 - 3 3/4"  
Pristine Condition - \$1075 (79)



**Six Sided Building**  
Kyser & Rex Company  
Philadelphia - 1890's - 2 3/8"  
Pristine Condition - \$685 (80)



**Medium Cupola Bank**  
Rare Candy Apple, Green  
J. & E. Stevens Company  
Cromwell, CT - 1880's - 4 1/4"  
Very Fine Condition - \$450 (81)



**Home Savings Bank**  
Tan, Khaki and Yellow  
J. & E. Stevens Company  
Cromwell, CT - 1896 - 5 7/8"  
Excellent Plus Condition - \$675 (82)



**Medium Cupola Bank**  
Unusual Stenciled Roof  
J. & E. Stevens Company  
Cromwell, CT - 1880's - 4 1/4"  
Excellent Condition - \$575 (83)



**City Bank with Teller**  
Copper Plated Finish  
H. L. Judd Mfg. Co.  
Wallingford, CT - 1895 - 5 1/4"  
Near Mint Condition - \$875 (84)



**City Bank with Chimney**  
Designed by Thomas Swan  
J. & E. Stevens Company  
Cromwell, CT - 1880's  
Pristine Condition - \$4250 (85)



**Cleveland Clock Savings**  
Copper & Bronze Flashed Finish  
Unknown Manufacturer  
Cleveland, Ohio - 1900 - 4 7/8"  
Excellent Condition - \$1250 (86)



## Still Banks



### Three Domed Banks

A. C. Williams

Ravenna, OH - 1920 - 4 3/4", 4 1/2" & 3 5/8"

Pristine Condition - \$525 for the Set [\(87\)](#)



### Three High Rise Buildings

Kenton Hardware Co.

Kenton, OH - 1920 - 5 1/2", 4 5/8" & 3 1/4"

Pristine Condition - \$1125 for the Set [\(88\)](#)



### Liberty Bell

By J. M. Harper

Chicago - 1908 - 3 3/4"

Mint Condition - \$375 [\(89\)](#)



### Double Door Bank

Deluxe Silver and Gold Finish

Ravenna, OH - 1920 - 5 1/2"

Near Mint Condition - \$575 [\(90\)](#)



### Women's Relief Bell

Kenton Hardware

Ohio - 1938 - 3 3/4"

Mint Condition - \$325 [\(91\)](#)



### Rare Set of Four Flat Iron Building Banks

Kenton Hardware Co. - 1920 -

3 1/4", 5 1/2", 5 3/4", & 8 1/4"

Excellent Condition on All - \$3450 for the Set [\(92\)](#)



### Columbia Tower

Scarce Nickel Plated Finish

Grey Iron Casting Co.

Mount Joy, PA - 1897 - 6 7/8"

Excellent Condition - \$1350 [\(93\)](#)





**Eiffel Tower Bank**  
Sydenham & McOustra  
England - 1910 - 8 3/4"  
Near Mint Condition - \$1850 (94)

**Central United Church**  
Maryland - 1988 - 7"  
Mint Condition - \$395 (95)



**Independence Hall Tower**  
Deluxe Polychrome Version  
Enterprise Mfg. Company  
Philadelphia - 1876 - 9 1/2"  
Near Mint Condition - \$4750 (96)



**Independence Hall Bank**  
Rare Fully Expanded Version  
Enterprise Mfg. Company  
Philadelphia - 1876 - 6 1/4" T x 11 1/4" L  
Excellent Condition - \$3450 (97)



**Small Independence Hall**  
Enterprise Mfg. Company  
Philadelphia - 1876 - 9"  
Very Fine Condition - \$975 (98)

**Large Independence Hall**  
Enterprise Mfg. Company  
Philadelphia - 1876 - 10"  
Excellent Condition - \$1850 (99)

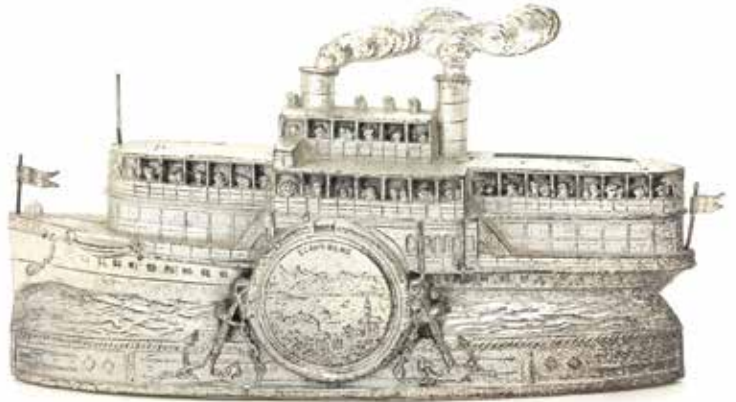




## Still Banks



**Jackie Coogan at Organ**  
Germany - 1920's - 3 1/4"  
Pristine Condition - \$595 (100)



**Riverboat**  
Souvenir Bank  
Germany - 1920's - 4"  
Pristine Condition - \$495 (101)



**Monkey Cage**  
Penny Toy Bank  
Germany - 1910's - 3"  
Pristine Condition - \$875 (102)



**Raths Sparglobus**  
Raths Globe Bank  
Germany - 1910's - 4 1/2"  
Pristine Condition - \$975 (103)



**Elephant Cage**  
Penny Toy Bank  
Germany - 1920's - 2 7/8"  
Pristine Condition - \$875 (104)



**Snowman Bank**  
Silvered Lead  
Germany - 1930's - 5 1/4"  
Pristine Condition - \$395 (105)



**Dachshund by Barrel**  
Silvered Lead  
Germany - 1920's - 2 3/4"  
Pristine Condition - \$525 (106)



**Snowman with Broom**  
Silvered Lead  
Germany - 1930's - 5 1/2"  
Excellent Plus Condition - \$450 (107)



**Bull Dog Head**  
Germany - 1920's  
Near Mint Condition - \$875 (108)



**Little Sailor Boy**  
Germany - 1920  
Pristine Condition - \$2250 (109)



**Boxer Head**  
Germany - 1920's  
Pristine Condition - \$475 (110)



**Donkey Looks Right**  
Germany - 1920's  
Excellent Condition - \$225 (111)



**Clown Head Bank**  
on Ruffled Collar  
Germany - 1920's  
Excellent Condition - \$850 (112)



**Donkey Looks Left**  
Germany - 1920's  
Pristine Condition - \$225 (113)



**Seated Rabbit**  
Germany - 1920's  
Excellent Condition - \$1075 (114)



**Rare Halloween Cat**  
Germany - 1920's  
Pristine Condition - \$1850 (115)



**Leonberger**  
Germany - 1920's  
Excellent Condition - \$750 (116)



## Still Banks



### **G. O. P. Elephant Bank**

Arcade Mfg. Company  
Freeport, IL - 1930 - 3 7/8"  
Pristine Condition - \$485 [\(117\)](#)



### **Minuteman Bank**

Hubley Mfg. Company  
Lancaster, PA - 1920's - 6"  
Excellent Plus Condition - \$575 [\(118\)](#)



### **Quilted Lion Bank**

Ober Mfg. Company  
Chagrin Falls, OH - 1905 - 3 3/4"  
Excellent Plus Condition - \$625 [\(119\)](#)



### **Sharecropper Bank**

A. C. Williams  
Ravenna, OH - 1920's - 5 1/2"  
Excellent Condition - \$285 [\(120\)](#)



### **Man on Bale of Cotton Bank**

U. S Hardware Company  
New York City - 1890's - 5"  
Excellent Condition - \$1650 [\(121\)](#)



### **Golliwog Bank**

Chamberlain & Hill  
England - 1895 - 6 1/2"  
Excellent Plus Condition - \$950 [\(122\)](#)



### **Mulligan the Cop**

A. C. Williams Company  
Ravenna, OH - 1910's"  
Excellent Condition - \$1650 [\(123\)](#)



### **The Capitalist**

Ober Mfg. Company  
Chagrin Falls, OH - 1905  
Excellent Condition - \$1250 [\(124\)](#)



AC Williams produced advertising examples of their "Mulligan" Bank. This example was made for Hamburgers Boys Dept.



**Globe on Arc Bank**  
 Grey Iron Casting Co.  
 Mount Joy, PA - 1905 - 5 1/4"  
 Excellent Condition - \$345 (125)



**Circus Elephant Bank**  
 Hubley Mfg. Company  
 Lancaster, PA - 1935 - 3 7/8"  
 Mint Condition - \$375 (126)



**Globe Semi-Mechanical**  
 Bell Ringing Bank  
 Enterprise Mfg. Company  
 Philadelphia - 1880 - 5 3/4"  
 Excellent Condition - \$1350 (127)



**Elephant on Circus Tub**  
 A. C. Williams  
 Ravenna, OH - 1920's - 5 3/8"  
 Near Mint Condition - \$275 (128)



**Apple on Three Leaves Bank**  
 Rare Granny Smith Variety  
 Kyser & Rex Company  
 Philadelphia - 1890's  
 Pristine Plus Condition - \$4500 (129)



**Baseball on Three Bats**  
 Hubley Mfg. Company  
 Lancaster, PA - 1914 - 5 1/4"  
 Pristine Condition - \$2850 (130)



**Thrifty - The Wise Pig**  
 Hubley Mfg. Company  
 Lancaster, PA - Early 1930's - 6 5/8"  
 Mint Condition - \$395 (131)



**Camel Banks**  
 A. C. Williams  
 Ravenna, OH - 1920's - 4 3/4" & 7 1/4"  
 Pristine Condition - \$975 for the Set (132)



**Porky Pig Bank**  
 Hubley Mfg. Company  
 Lancaster, PA - Early 1930's - 5 1/2"  
 Excellent Condition - \$275 (133)



## Doorstops



**Charleston Dancers**

Designed by Fish  
Hubley Mfg. Company - 1928 - 8 7/8"  
Pristine Condition - \$3500 [\(134\)](#)



**Bathing Girls**

Designed by Fish  
Hubley Mfg. Company - 1928 - 10 7/8"  
Near Mint Condition - \$3500 [\(135\)](#)



**Parlor Maid**

Designed by Fish  
Hubley Mfg. Company - 1928 - 9 1/4"  
Near Mint Condition - \$3500 [\(136\)](#)



**Popeye with Pipe**

Hubley Mfg. Company  
Lancaster, PA - 1929 - 9"  
Finest Known Example - \$9500 [\(137\)](#)



**Sailor & Barrel of Rum**

Littco. Products  
Littlestown, PA - 1932 - 11 3/8"  
Near Mint Condition - \$4250 [\(138\)](#)



**Messenger Boy**

Designed by Fish  
Hubley Mfg. Company - 1928 - 10"  
Pristine Condition - \$2250 [\(139\)](#)



**Soldier Boy**  
 "I'LL DUMA BEST"  
 Unknown Maker - 1920 - 10"  
 Pristine Condition - \$2450 (140)



**Bellhop**  
 H. L. Judd Company  
 Wallingford, CT - 1920 - 8 7/8"  
 Pristine Condition - \$750 (141)



**Police Boy**  
 Unknown Maker - 1925 - 10 1/2"  
 Pristine Plus Condition - \$1850 (142)



**Accordion Player**  
 Spencer Mfg.  
 Gilford, CT - 1928 - 7"  
 Excellent Plus Condition - \$1750 (143)



**Little Black Sambo**  
 Blodgett Studios  
 Lake Geneva, WI - 1925 - 8 3/4"  
 Finest Known Example - \$4400 (144)



**Banjo Player**  
 Spencer Mfg.  
 Gilford, CT - 1928 - 7"  
 Pristine Plus Condition - \$2250 (145)



**Swinging Golfer**  
 Hubley Mfg. Company  
 Lancaster, PA - 1930 - 10"  
 Excellent Plus Condition - \$1250 (146)



**Small Rotund Caddy**  
 Unknown Maker - 1920 - 6"  
 Excellent Condition - \$1375 (147)



**Caddy in Knickers**  
 Hubley Mfg. Company  
 Lancaster, PA - 1930 - 8"  
 Pristine Condition - \$2850 (148)



## Doorstops



### Red Riding Hood & Wolf

Nuydea Company  
Chicago, IL - 1920  
7 1/2" x 9 1/2"  
Pristine Condition - \$1750 (149)



### Dolly Dimple

Hubley Mfg. Company  
Lancaster, PA - 1935 - 7 3/4"  
Near Mint Condition - \$625 (150)



### Green Fawn

By Taylor Cook  
American - Dated 1930 - 10"  
Near Mint Condition - \$1250 (151)



### Dunce Bear School Boy

Unknown Maker  
American - 1930 - 9 5/8"  
Mint Condition - \$1250 (152)



### Green Monkey

By Taylor Cook  
American - Dated 1930 - 8 3/8"  
Pristine Condition - \$1250 (153)



### Red Riding Hood with Basket

Hubley Mfg. Company  
Lancaster, PA - 1930 - 9 1/2"  
Excellent Plus Condition - \$950 (154)

### Duck & Lady Bug

Hubley Mfg. Company  
Lancaster, PA - 1930  
7 1/2" x 10 1/2"  
Pristine Plus Condition - \$2250 (155)





**Lady with Fan**  
Littco. Products  
Littlestown, PA - 1930 - 9 7/8"  
Near Mint Condition - \$825 (156)



**Geisha Girl**  
Hubley Mfg. Company  
Lancaster, PA - 1930 - 7"  
Pristine Condition - \$750 (157)



**Colonial Woman**  
Littco. Products - Original Label  
Littlestown, PA - 1930 - 10 1/4"  
Near Mint Condition - \$825 (158)



**Street Singers**  
Hubley Mfg. Company  
Lancaster, PA - 1930  
6 1/2" x 7 3/4"  
Pristine Condition - \$1250 (159)



**Olive Picker**  
Hubley Mfg. Company  
Lancaster, PA - 1930  
7 3/4" - 8 3/4"  
Pristine Condition - \$1075 (160)



**Serenading Troubadour**  
Candlestick Company  
American - 1930 - 11 1/2"  
Near Mint Condition - \$2850 (161)



**Flamenco Dancer**  
Spencer Mfg.  
Gilford, CT - 1928 - 9 1/2"  
Mint Condition - \$1350 (162)



**Standing Geisha**  
Hubley Mfg. Company  
Lancaster, PA - 1930 - 10 1/4"  
Excellent Plus Condition - \$825 (163)



## Doorstops



### Startled Halloween Cat

Rearing with Arched Back

Spencer Mfg. - 1920's

11 1/2" x 8 1/2"

Pristine Condition - Finest Known Example - \$6250 (164)

This wonderful spooked cat represents one of the most dynamic doorstops ever produced. Having seen something ghoulish and frightening, the cat digs his paws into the ground, rears back and arches his spine. The highest sense of dramatic realism is effectively conveyed by this pose. Only a handful of examples of this masterpiece exist.

### Halloween Girl

Littco. Products

Littlestown, PA - 1928

13 3/4" - 9 1/2"

Pristine Condition - \$32,500 (165)

A little girl dressed as an impish white ghost carries her jack-o-lantern. The Halloween Girl doorstop is widely accepted by collectors as the most significant and important design in the field. At this time, there are only five known authentic specimens. Here is a golden opportunity to acquire this rare iconic piece.





**Raggedy Ann Bookend**

Hubley Mfg. Company  
Lancaster, PA - 1930 - 5 1/2"

Near Mint Condition - \$4500 for the Pair (166)



**Uncle Sam Doorstop**

Unknown Maker  
American - 1920 - 12"  
Near Mint Condition - \$17,500 (167)



**Raggedy Andy Bookend**

Hubley Mfg. Company  
Lancaster, PA - 1930 - 5 1/2"

Near Mint Condition - \$4500 for the Pair (168)



**Punch & Judy Doorstop**

Deluxe Fanciful Polychromed Version  
London, England - Circa 1900  
Punch 12" x 9" & Judy 12" x 7 1/2"  
Near Mint - \$7500 for the Pair (169)



Mrs. Punch cradles infant Punch in her arms. At the same time, she can be seen lifting her dress up to reveal her petticoat and bloomers, hoping to catch the eye of her husband. However, Punch does not respond to her overt display of affection. To the contrary, he has turned his back to her and is seen thumbing (or picking) his massive curving nose. His pooch Toby, decked out in an equally foppish costume, sits loyally by his side. The fully saturated color and quality of these doorstops have no equal.



## Doorstops

### Rooster Doorstop

Bradley & Hubbard

Meridan, CT - 1910

11" x 9"

Pristine Condition - \$3850 (170)



### Turkey Doorstop

Bradley & Hubbard

Meridan, CT - 1910

12 1/2" x 10 1/2"

Near Mint Condition - \$7500

(171)



**Black Bear with Honey**

American - 1925 - 14 1/2"

Pristine Plus Condition - \$8500 (172)



**Brown Bear with Honey**

American - 1925 - 14 1/2"

Pristine Plus Condition - \$7500 (174)

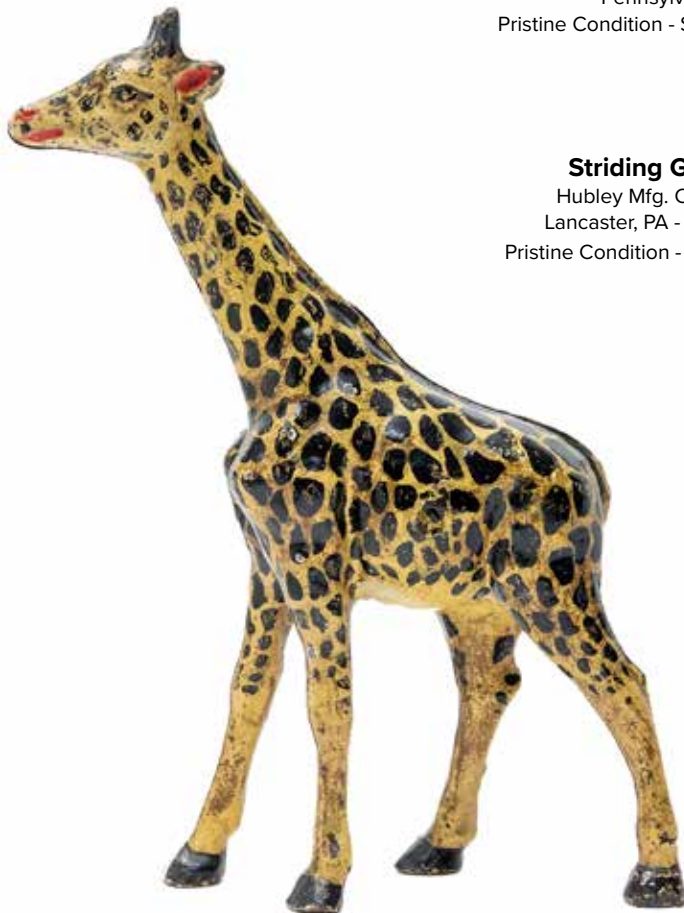


**Bear Cub Paperweights**

Wilton Products

Pennsylvania - 1940

Pristine Condition - \$625 for the Pair (173)



**Striding Giraffe**

Hubley Mfg. Company

Lancaster, PA - 1920 - 13"

Pristine Condition - \$12,500 (175)





## Doorstops



### House with Waterwheel & Bridge

Albany Foundry  
Albany, NY - 1925  
10 1/4" x 7 1/2"  
Pristine Condition - \$1250 [\(176\)](#)



### Windmill

American - 1925  
8 1/2" x 7"  
Near Mint Condition - \$675 [\(177\)](#)



### Large Windmill

A. M. Greenblatt  
Boston, MA - 1926  
10 x 11 1/2"  
Pristine Condition - \$950 [\(178\)](#)



### Story Book House

Eastern Specialty Mfg.  
American - 1925  
7 1/4" x 8 1/2"  
Excellent Plus Condition - \$675 [\(179\)](#)



### Cottage in the Woods

Hubley Mfg. Company  
Lancaster, PA - 1925  
8 1/4" x 7 1/4"  
Pristine Condition - \$875 [\(180\)](#)



### Cottage with Picket Fence

Hubley Mfg. Company  
Lancaster, PA - 1925  
7 1/2" x 5 1/2"  
Excellent Plus Condition - \$625 [\(181\)](#)



### Cape Cod Cottage

Eastern Specialty Mfg.  
American - 1925  
8 1/2" x 6"  
Pristine Condition - \$525 [\(182\)](#)



### Windmill

National Foundry  
American - 1925  
7" x 7"  
Pristine Plus Condition - \$750 [\(183\)](#)



### House with Flowering Vine

Woman Ascends Staircase  
Eastern Specialty - 1925  
8 1/2" x 5 3/4"  
Pristine Condition - \$750 [\(184\)](#)



**House with Porch**

Bradley & Hubbard  
Connecticut - 1925  
8" x 5"

Pristine Condition - \$675 (185)



**Drum Major**

Hubley Mfg. Company  
Lancaster, PA - 1935 - 13"  
Mint Condition - \$850 (186)



**Girl in Canoe**

American - 1920  
10" x 4 1/4"

Pristine Condition - \$1250 (187)



**Poppies in Basket**

C. H. F. Company  
American - 1920  
10 1/2" x 8 1/2"

Pristine Condition - \$1250 (188)



**Art Deco Flowers**

In a Clay Pot  
American - 1928  
10" x 9 1/2"

Pristine Condition - \$1375 (189)



**Girl Watering Flowers**

Littco. Products  
Littlestown, PA - 1930  
12" x 8 1/2"

Near Mint Condition - \$975 (190)



**Girl Holding Skirt**

Bradley & Hubbard  
Meridan, CT - 1915 - 13"  
Excellent Condition - \$2750 (191)



**Mammy - Hands on Hips**

Littco. Products  
Littlestown, PA - 1930 - 13 1/2"  
Pristine Condition - \$1075 (192)



## Mechanical Banks



### Gem Bank

Judd Mfg. Company  
Wallingford, CT - 1880  
Pristine Plus Condition - \$1850 (193)



### Dog on Turntable

Outstanding Green Highlights  
Judd Mfg. Company  
Wallingford, CT - 1880's  
Near Mint Condition - \$3500 (194)



### Monkey - Coin in Stomach

Att. Ives, Blakeslee Company  
Bridgeport, CT - 1880's  
Excellent Condition - \$3450 (195)



### Bull Tosses Boy in Well

Scarce Early Fantasy Conversion  
American - 1890  
Provenance - Hegarty Collection  
Near Mint Condition - \$5500 (196)



### Bear Hugs Tree Stump

Scarce Ebony Jappanned Finish  
Judd Mfg. Company  
Wallingford, CT - 1880's  
Near Mint Condition - \$6500 (197)



### Pay Phone Bank

Deluxe Painted Finish  
J. & E. Stevens Company  
Cromwell, CT - 1928  
Near Mint Condition - \$4400 (198)

### Watchdog Safe

Combination is 2 - 1 - 7  
J. & E. Stevens Company  
Cromwell, CT - 1890's  
Near Mint Condition - \$6250 (199)





### Initiating Bank - 2nd Degree

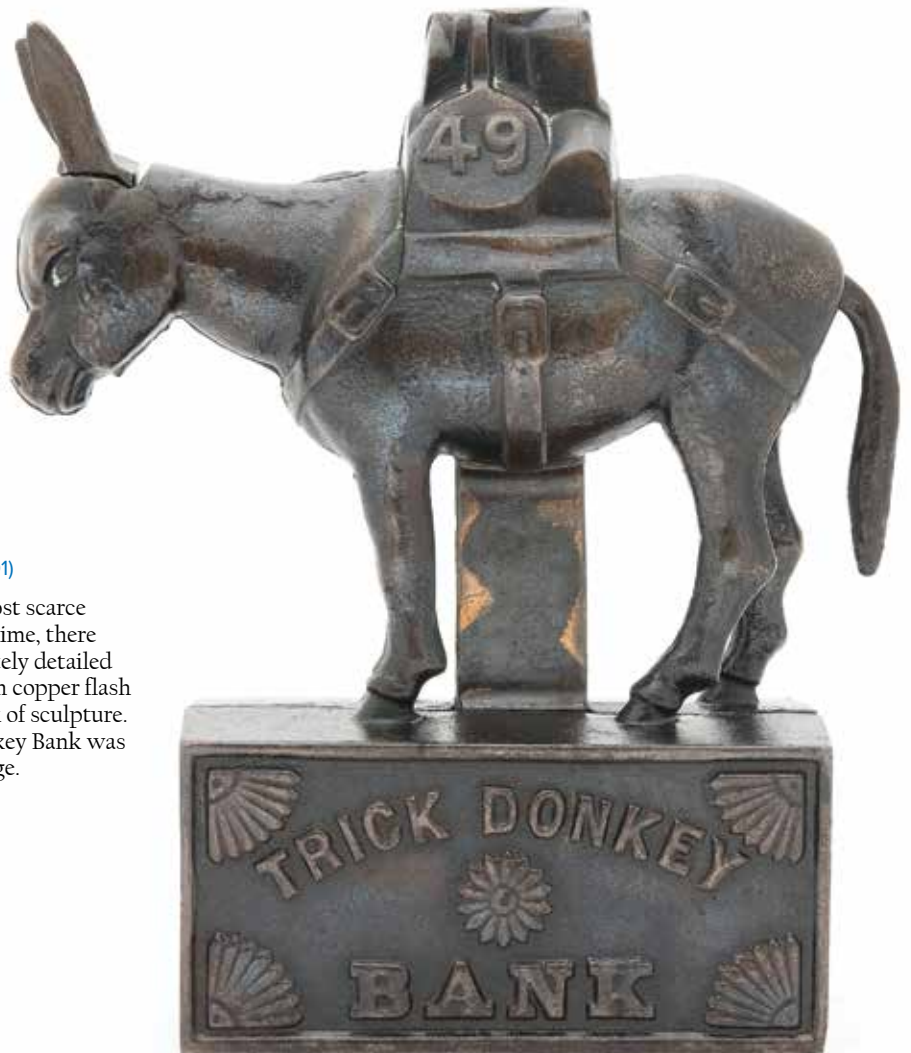
aka Goat, Frog & Old Man

Mechanical Novelty Works

New Britain, CT - 1880

Pristine Plus Condition - \$14,500 (200)

This is an extremely desirable specimen because the Old Man is featured with a copper finish. Compositionally, it really helps to set the bank in a more aesthetic frame work.



### Trick Donkey Bank

Possibly Charles Bowen

American - Dated 1897

Pristine Plus Condition - \$18,500 (201)

This represents an offering of one of the most scarce mechanical toy banks in existence. At this time, there are only four known examples of this exquisitely detailed casting. Though made of iron, it is finished with copper flash highlights to make it resemble a gleaming work of sculpture. Remember, the period in which the Trick Donkey Bank was created was known as the Gilded Age.



## Mechanical Banks



**Mosque Bank**  
Ebony Japanned Finish  
Judd Mfg. Company  
Wallingford, CT - 1880's  
Excellent Condition - \$2850 (202)



**Artillery Bank**  
Copper Plated Finish  
Shepard Hardware  
Buffalo, NY - 1892  
Pristine Condition - \$3300 (203)



**Mosque Bank**  
Desirable Copper Plated Finish  
Judd Mfg. Company  
Wallingford, CT - 1880's  
Near Mint Condition - \$7500 (204)

When the crank is turned, Quasimodo appears in the dome of the cathedral. He holds a tray in his upstretched arms. Place your coin on his tray and turn the crank again. He retreats into the bank and deposits your coin.

## Called Out Bank

Extremely Rare Cast Iron Specimen

J. & E. Stevens Company

Cromwell, CT - 1900

Near Mint Condition - \$27,500 (205)

The short-lived skirmish known as the Spanish-American War seems to inform the imagery of the "Called Out Bank". When coins are pushed into the slot, a second soldier pops through the top of the tent and stands at attention. Early mechanical bank collectors suggested that J. & E. Stevens never released this bank into the marketplace because a resolution to the conflict was achieved almost immediately. This effectively explains why colors were never assigned to the toy bank and why so few of them exist.



## Shoot the Chute Bank

J. & E. Stevens Company

Boxed Second Casting

Connecticut - Late 1940's

Near Mint Condition - \$12,500 (206)

Buster Brown and Tige take a sled ride down a steep incline. This represents a sensational 1940's copy made from the original factory mold by pioneering toy bank hobbyist Mark Haber. In modern times, bank collectors refer to these early copies as desirable "collectible forgeries". A boxed period specimen in pristine condition might run as much as \$95,000.



## Mechanical Banks



### Elephant with Three Stars

Super Scarce Copper Flash Finish  
American - 1890  
Pristine Condition - \$6500 (207)



### Small Standing Rabbit

Lockwood Mfg. Company  
South Norwalk, CT - 1890  
Pristine Condition - \$1950 (208)



### Standing Bear - Slot in Chest

Unique Copper Plated Specimen  
Kenton Hardware Co.  
Kenton, OH - 1900  
Mint Condition - \$7000 (209)



### Buffalo - Twist Tail

Scarce Copper Finish  
American - 1890's  
Near Mint Condition - \$3500 (210)

### Guessing Bank - Male Figure

Also used as a Gambling Device  
Patented by E. McLoughlin - May 1877  
Pristine Plus Condition - \$12,500 (211)

A happy-faced gentleman sits backwards in his chair and invites us to make a wager. If we guess the number correctly, he will pay us 5 to 1 on our penny. However, the numerals on the clockface run 1 to 6 twice. Therefore, the banker always has the odds slightly in his favor.



### Court Jester and Monkey

Unusual Square Tiered Base  
German - 1890's  
15 1/4" Tall

Pristine Condition - \$9500 (212)

Like the Tammany Bank, coins placed in the Jester's right hand are deposited into a small satchel because of the law of gravity. All-in-all, a very satisfying and amusing bit of entertainment for the price of a penny.





## Mechanical Banks



### **Giant on Rocks**

H. L. Judd Company  
Wallingford, CT - 1884  
Pristine Condition - \$28,500 (213)

The Giant Bank is the scarcest bank that Judd produced. We find the giant standing on a rocky ledge of a narrow mountain pass. He is brandishing an old bumpy and gnarled club. At first glance, he looks formidable and mean, though, in reality, he's merely encouraging you to save money. Press the lever beneath his left foot and he will raise his arms and open his mouth. Simultaneously, his jaw lowers and he sticks out his tongue to accept your deposit. Presumably, once his appetite for coins is satisfied, he will let you pass by him without further incident.



### **Little Joe Bank**

John Harper Company  
England - 1925  
Pristine Plus Condition - \$675 (214)



### **Dinah Bank**

John Harper Company  
England - 1911  
Pristine Condition - \$1250 (215)



### **Uncle Tom Bank - No Lapels**

Scarce in Red Costume  
Kyser & Rex - 1880's  
Pristine Condition - \$4800 (216)

## Mechanical Banks

### The Hindu Bank

Kyser & Rex Company  
Philadelphia - 1882  
Frank Kidd Collection  
Excellent Condition - \$9500 (217)



This is arguably the most difficult bank to find in good condition. The broad sides of his cheeks and forehead typically cause a great deal of wear. This is truly an exceptional specimen.

### Jolly "N" Bank

J. & E. Stevens Company  
Cromwell, CT - 1897  
Pristine Plus Condition - \$2250 (218)



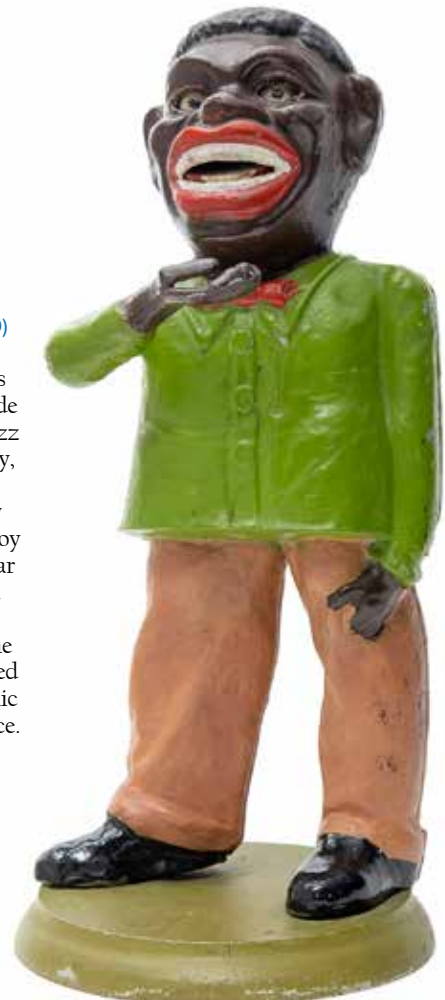
A sublime example of this classic coin swallowing toy bank.



### The Al Jolson Bank

aka The Jazz Singer  
Austrian - 1930 - 13 1/2"  
Finest Known Example  
Mint & Bright Condition - \$9500 (219)

Collectors have speculated that this impressive bank was made to coincide with the European release of "The Jazz Singer" in the late 1920's. Historically, this film is recognized as being the first feature length film with a fully synchronous musical score. For the toy bank, we find Al Jolson in the circular spotlight of the stage. Even though the figure is fixed in position with screws on the bottom of the base, the performer is imbued with an animated liveliness that stems from the dynamic positioning of his legs in a wide stance.





### Girl Skipping Rope

J. & E. Stevens Company

Cromwell, CT - 1890

Excellent Condition - \$45,000 [\(220\)](#)



For old-time bank collectors, the Girl Skipping Rope represents the closest thing there is to a Holy Grail. It's not that it is particularly rare, it's just the one classic bank that every collector hopes to be able to add to his or her collection one day. In fact, the Mechanical Bank Collectors of America designated it as their mascot when the club was founded in the late 1950s. It is regarded as the most complex toy bank ever devised and brought to market. When assembled, it consists of more than 50 separate parts, including iron casting, screws, and springs. To operate this beauty, you must give the mechanism a strong counter-clockwise turn until you hear it lock into place. Pushing the operating lever engages the powerful brass spring and iron flywheel, causing the girl to skip 8 to 10 times. As she skips, her head pivots from left to right and her legs move forward and backward with each pass of the rope.

**Merry-Go-Round Bank**

Made by Kyser & Rex  
Philadelphia - 1880's

Excellent Condition - \$42,500 (221)



For most children, their first ride on the carousel represents a very exciting and exhilarating experience. They must overcome their fear of the hurried, often dizzying whirl around and around, as they fearlessly try to reach for the brass ring and win a prize. This bank very effectively captures that moment of transformative bliss. The ticket man, wand in hand and peaked yellow cap on his head, takes your coin. The children sit atop carousel animals that include a swan, an ostrich, a dog, a camel, and an elephant. Turning the crank animates the action and sounds a bell.



## Mechanical Banks

### Hall's Liliput Bank

Patriotic Colors

J. & E. Stevens Company

Cromwell, CT - 1877

Pristine Condition - \$3500 (222)



### Hall's Excelsior Bank

Patriotic Colors

J. & E. Stevens Company

Cromwell, CT - 1869

Pristine Plus Condition - \$4250 (224)



Historically, the Hall's Excelsior Bank represents the first patent of a mechanical toy bank in cast iron.

### Patronize the Blindman

J. & E. Stevens Company

Cromwell, CT - 1878

Pristine Condition - \$14,500 (225)



In postbellum Reconstructionist America, children became all too familiar with giving alms to maimed and injured veterans of the Civil War. Clearly the Patronize Bank derives its thematic inspiration from such scenarios.

### The Multiplying Bank

Finished in Patriotic Red, White & Blue

J. & E. Stevens Company

Cromwell, CT - 1880's

Pristine Condition - \$4750 (223)



There is no significant animated action for the Multiplying Bank. Coins are merely deposited through a slot in the roof. However, an optical illusion is created by angled mirrors internally set to cause every deposit to appear multiplied.

### Magic Bank

Patriotic Colors

J. & E. Stevens Company

Cromwell, CT - 1876

Excellent Plus Condition - \$3750 (226)





## Panorama Bank

Green & Red Color Variant

J. & E. Stevens Company

Cromwell, CT - 1875

Pristine Plus Condition - \$34,500 (227)



## Deluxe Painted Palace Bank

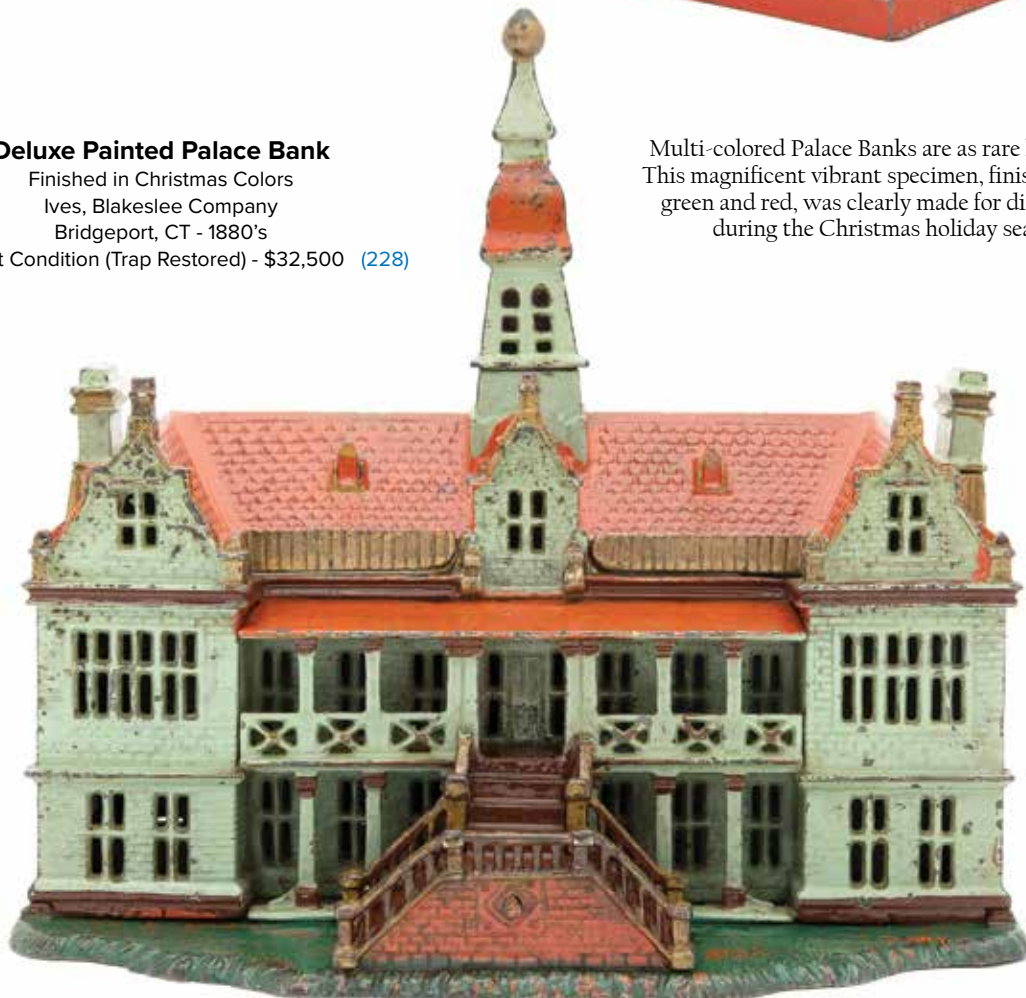
Finished in Christmas Colors

Ives, Blakeslee Company

Bridgeport, CT - 1880's

Near Mint Condition (Trap Restored) - \$32,500 (228)

Multi-colored Palace Banks are as rare hen's teeth. This magnificent vibrant specimen, finished in mint green and red, was clearly made for distribution during the Christmas holiday season.





## Mechanical Banks



### **Pelican - Baseball Player**

Trenton Lock & Hardware Company  
Trenton, NJ - 1880's  
Pristine Condition - \$7500 [\(229\)](#)



### **Uncle Sam Bust**

Ives, Blakeslee Company  
Bridgeport, CT - 1890  
Near Mint Condition- \$5250 [\(230\)](#)



### **Pelican - Man Thumbs Nose**

Trenton Lock & Hardware Company  
Trenton, NJ - 1880's  
Excellent Plus Condition - \$4500 [\(231\)](#)

Pennies deposited in his top hat cause Uncle Sam's beard to wiggle. Like every politician, he appears to take every available chance to make a speech.



### **Owl Turns Head**

Scarce White Owl  
J. & E. Stevens Company  
Cromwell, CT - 1880's  
Pristine Condition - \$9500 [\(232\)](#)



### **North Pole Bank**

J. & E. Stevens Company  
Connecticut - 1950  
Near Mint Condition - \$8500 [\(233\)](#)



### **Owl Turns Head**

Yellow & Brown Barn Owl  
J. & E. Stevens Company  
Cromwell, CT - 1880's  
Near Mint Condition - \$2500 [\(234\)](#)

The "pure white" variation of the Owl Turns Head Bank is perhaps 100 times more rare than the other color combinations. Notice also the pale yellow glass eyes utilized with the white owl.

This rare historically themed bank appears to have been assembled from original Stevens' foundry parts in 1950 and painted at that time.

The present example is one of the most finely painted and detailed specimens we have ever come across.

## Mechanical Banks



### Frog on Round Base

Scarce Yellow, Red & Blue  
J. & E. Stevens Company  
Cromwell, CT - 1872  
Pristine Plus Condition - \$3450 (235)



### Rabbit in Cabbage

Marketed as "Flop-Ears"  
Kilgore Mfg. Company  
Westerville, OH - 1928  
Mint & Boxed - \$6250 (236)



### Frog on Round Base

Red & Blue Base  
J. & E. Stevens Company  
Cromwell, CT - 1872  
Excellent Condition - \$1950 (237)



### Jumbo on Wheels Bank

An Unlicensed Image of Barnum's Jumbo  
Kyser & Rex Company  
Philadelphia - 1884  
Excellent Condition - One Wheel Damaged - \$1650 (238)



### Toad on Stump

Scarce Chartreuse Colored Toad  
J. & E. Stevens Company  
Cromwell, CT - 1890's  
Pristine Condition - \$3200 (239)



### Light of Asia Bank

Kyser & Rex Company  
Philadelphia - 1880's  
Very Fine Condition - \$4750 (240)



### Owl - Slot in Book

Known as "Blinky the Owl"  
Kilgore Mfg. Company  
Westerville, OH - 1928  
Pristine Condition - \$1850 (241)



### Frog on Rock

Known as "Jug-O-Rum"  
Kilgore Mfg. Company  
Westerville, OH - 1928  
Mint & Boxed - \$5250 (242)



### Owl - Slot in Head

Known as "Blinky the Owl"  
Kilgore Mfg. Company  
Westerville, OH - 1928  
Pristine Condition - \$2750 (243)



## Mechanical Banks

Kyser & Rex produced a line of pipe organ-themed banks that include this wonderful quartet. Trained monkeys dressed as bell hops facilitate the deposit of your coins when you turn the crank. Children also enjoy the auditory stimulation of ringing chimes as the crank is turned.



**Miniature Organ Bank**

Kyser & Rex Company  
Philadelphia - 1880's  
Pristine Condition - \$1650 (244)



**Medium Organ Bank**

Kyser & Rex Company  
Philadelphia - 1880's  
Pristine Condition - \$1075 (245)



**Organ Bank - Boy and Girl**

Kyser & Rex Company  
Philadelphia - 1880's  
Excellent Plus Condition - \$2700 (246)



**Organ Bank - Cat and Dog**

Kyser & Rex Company  
Philadelphia - 1880's  
Excellent Condition - \$2750 (247)

James Bowen's frog bank is one of the most poignantly designed banks created in the late 19th Century. It depicts a playful moment between two frogs in which pennies placed on the baby frog's tummy are kicked into his mother's mouth when the lever is pressed. In order to create the glistening effects of the frog's skin, the lady painters at the Stevens' foundry deployed their best skills. Note also the two-toned green treatment of the swirling sea grass.

**Two Frogs Bank**  
J. & E. Stevens Company  
Cromwell, CT - 1882  
Near Mint & Bright - \$10,500 (248)

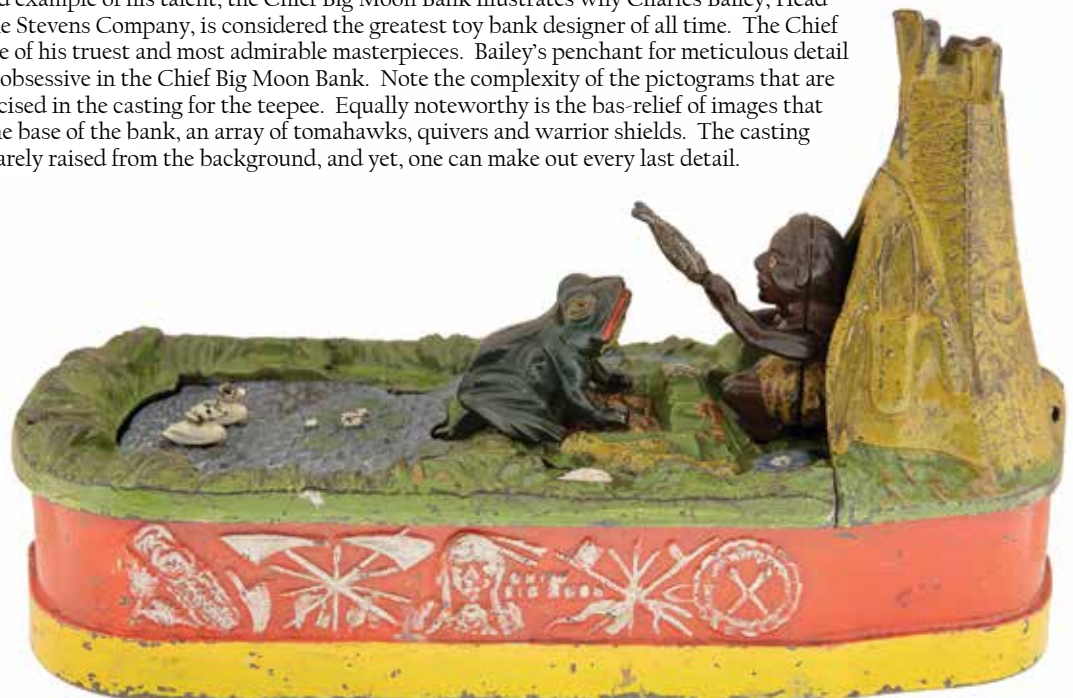


**Chief Big Moon**  
Conventional Base Colors  
J. & E. Stevens Company  
Cromwell, CT - 1899  
Excellent Condition - \$3450 (249)



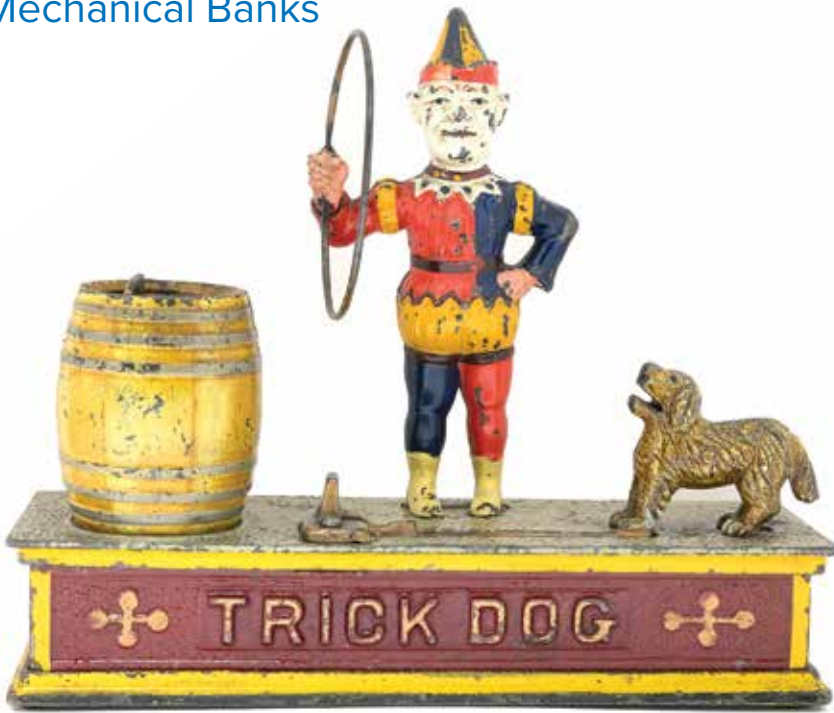
As an isolated example of his talent, the Chief Big Moon Bank illustrates why Charles Bailey, Head Designer at the Stevens Company, is considered the greatest toy bank designer of all time. The Chief Big Moon is one of his truest and most admirable masterpieces. Bailey's penchant for meticulous detail verges on the obsessive in the Chief Big Moon Bank. Note the complexity of the pictograms that are shallowly incised in the casting for the teepee. Equally noteworthy is the bas-relief of images that decorate the base of the bank, an array of tomahawks, quivers and warrior shields. The casting is barely raised from the background, and yet, one can make out every last detail.

**Chief Big Moon**  
Red & Yellow Base Colors  
J. & E. Stevens Company  
Cromwell, CT - 1899  
Pristine Condition - \$9500 (250)





## Mechanical Banks



### Trick Dog with Six-Part Base

Shepard Hardware Company

Buffalo, NY - 1890's

Excellent Condition - \$2450 (251)

This bank represents the original patent for a bank designed with a dog jumping through a hoop. It is one of the most beautiful offerings from Shepard's Excelsior Series. In particular, note the skill in the trompe l'oeil paintwork used to signify the wooden staves of the barrel.

### Monkey Bank

Hubley Mfg. Company

Lancaster, PA - 1930's

Near Mint Condition - With Original Chain - \$2750 (252)

Wedge your coin into the mouth of the well dressed little monkey and press the lever. Then watch as he leaps forward to deposit your penny into the organ grinder's hurdy-gurdy.



### Modern Trick Dog Bank

Hubley Mfg. Company

Lancaster, PA - 1935

Mint Condition - \$1500 (253)

This is a very late production toy bank that exhibits an identical engineering design to the antecedent by Shepard Hardware that it copies. A powerful spring and lever cause the circus dog to dutifully jump through the hoop and deposit your coins in the barrel.



**Mammy & Child**  
Red Dress Variant  
Kyser & Rex Company  
Philadelphia - 1885  
Pristine Plus Condition - \$18,500 (254)

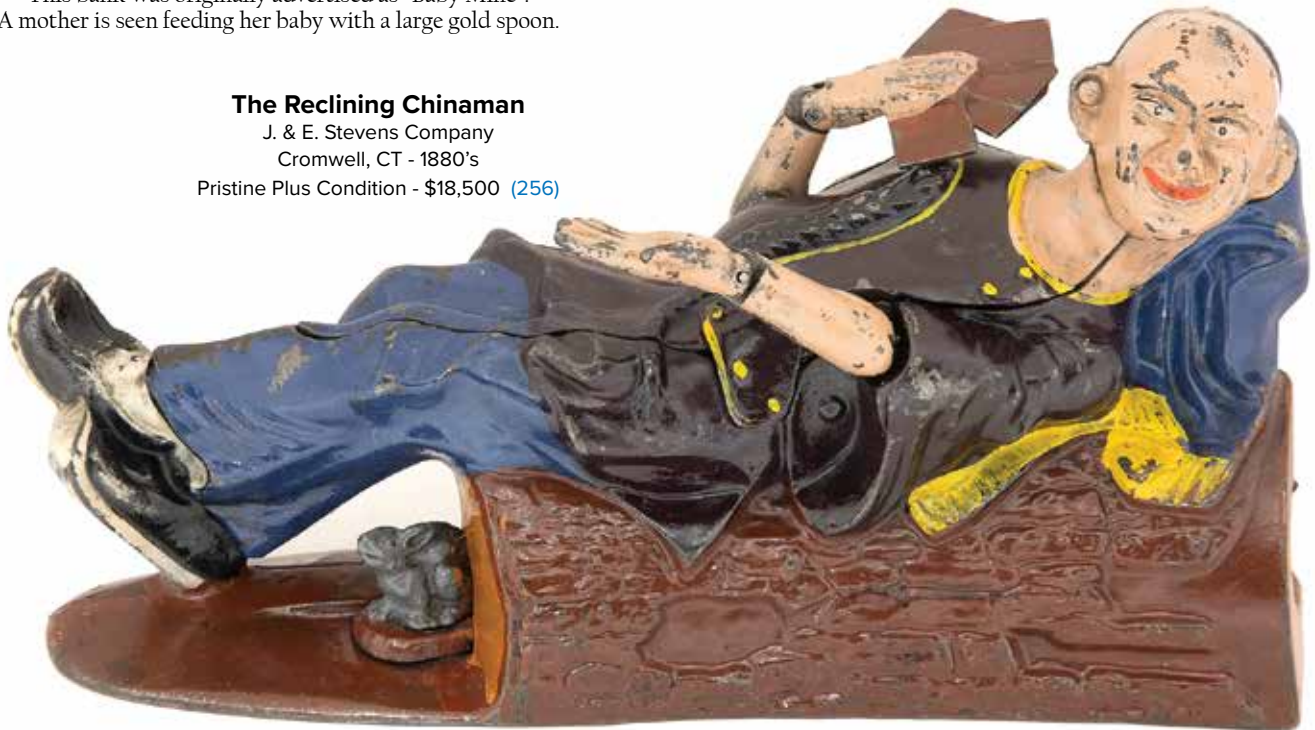
This bank was originally advertised as “Baby Mine”. A mother is seen feeding her baby with a large gold spoon.

**Stump Speaker Bank**  
Shepard Hardware Company  
Buffalo, NY - 1886  
Pristine Plus Condition - \$9500 (255)



The imagery for the Stump Speaker Bank clearly references the carpetbagger phenomenon that arose after the Civil War. The garish opulence of this humorous “dandy” is perhaps the greatest illustration of satire in mechanical bank production.

**The Reclining Chinaman**  
J. & E. Stevens Company  
Cromwell, CT - 1880's  
Pristine Plus Condition - \$18,500 (256)



A man invites us to play a hand of poker with him. At first glance, this bank appears relatively harmless, however, something far more sinister is afoot. On close examination, we discover disturbing symbolism that portrays the Chinese as having very bad character, marked by duplicity and underhandedness. This irrational belief system was commonly referred to in the press as “Yellow Peril”. Such ill-founded racist fears tragically illustrate the American society’s inability to allow diverse foreign social groups easy assimilation into the fabric of its culture. His “otherness” is emphasized by his exotic coolie costume and his long braided queue that curls down to his hips. Coins placed in his jacket pocket disappear when you press the activating lever. Simultaneously he lowers his right hand to reveal four aces. He mocks us with a smirk because he knows he has tricked us and “pocketed” our money.





### Initiating Bank - 1st Degree

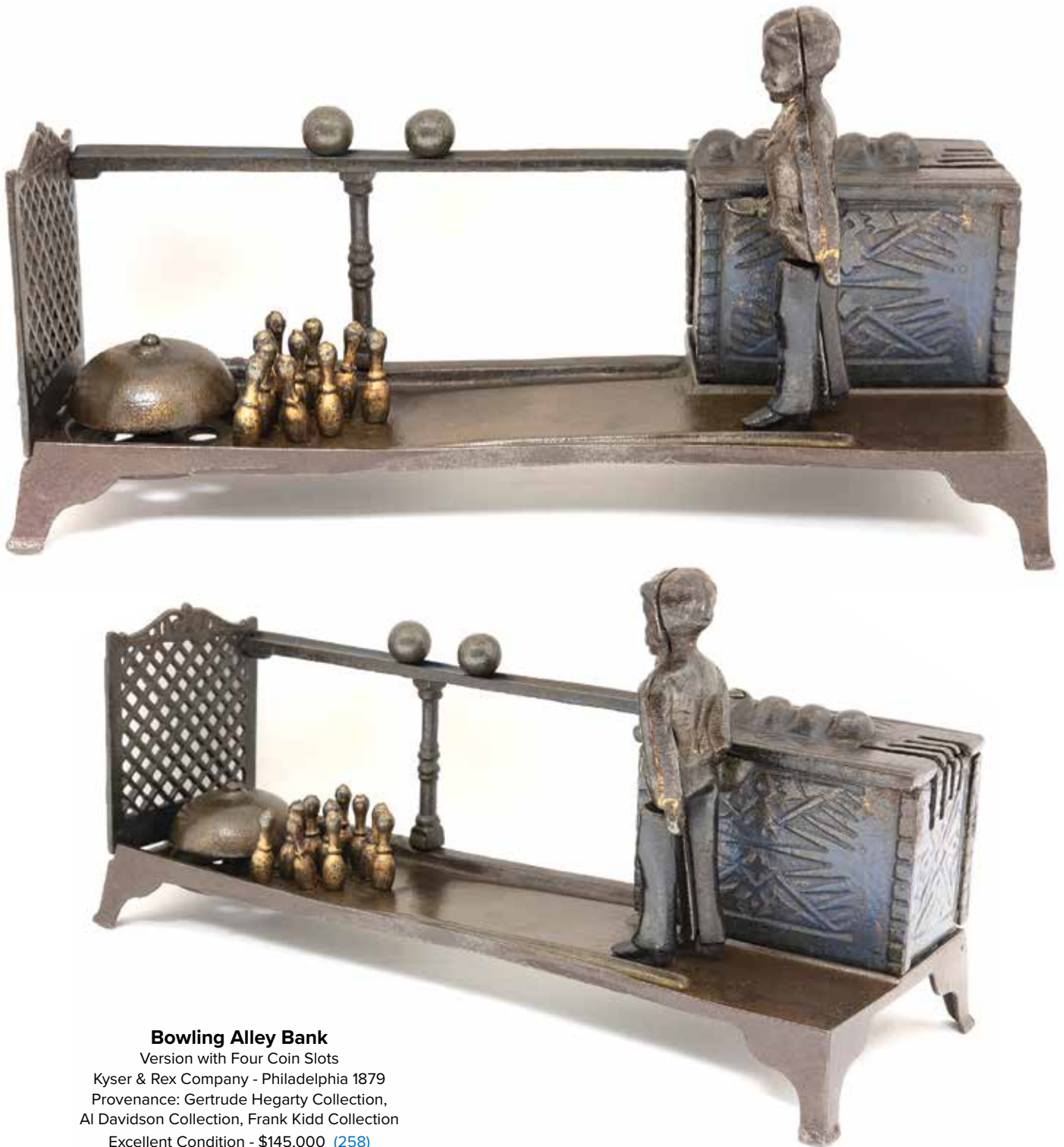
Mechanical Novelty Works

New Britain, CT - 1880's

Pristine Condition - \$28,500 (257)

The imagery deployed in the Initiating Bank may not be fully understood; nonetheless, it is very captivating because of its dynamic action. Three unlikely companions: a goat, a frog and a black male youth, are participants in some sort of ritualistic initiation into a secret society. A coin placed on the boy's tray is deposited into the frog's mouth after the lever activation causes the goat to ram the boy in the bottom with its horns. This rare bank is almost never found in such beautiful condition as this example.





### **Bowling Alley Bank**

Version with Four Coin Slots

Kyser & Rex Company - Philadelphia 1879

Provenance: Gertrude Hegarty Collection,  
Al Davidson Collection, Frank Kidd Collection

Excellent Condition - \$145,000 [\(258\)](#)

In her book on toy banks, Ina Bellows records that as early as 1940, several collectors claimed to have seen an example of the elusive Bowling Alley, but no definitive corroborative photographic evidence surfaced at that time. It was whispered about as a sort of toy bank Loch Ness Monster. Not until Colvert and Gertrude Hegarty revealed to fellow bank enthusiasts that they had discovered and acquired an all-original specimen of the "Bowling Alley" did a wider audience get to look at and review the bank on its merits. To play with the toy, place a ball in the bowler's right hand and insert a coin into one of the four slots. The man leans forward, releasing the ball, which knocks over pins and rings a bell. To make the bank ready again, you must straighten the bowler, reset the pins, and place the ball back in the bowler's hand.



## Mechanical Banks



### Eagle and Eaglets

J. & E. Stevens Company  
Cromwell, CT - 1880's

Near Mint with Box - \$7000 (259)

Stevens marketed this toy as the American Eagle Bank. Place a penny in the eagle's beak and watch as she leans forward to feed her young.



### Speaking Dog Bank

Shepard Hardware Company  
Buffalo, NY - 1895

Pristine with Box - \$8500 (260)

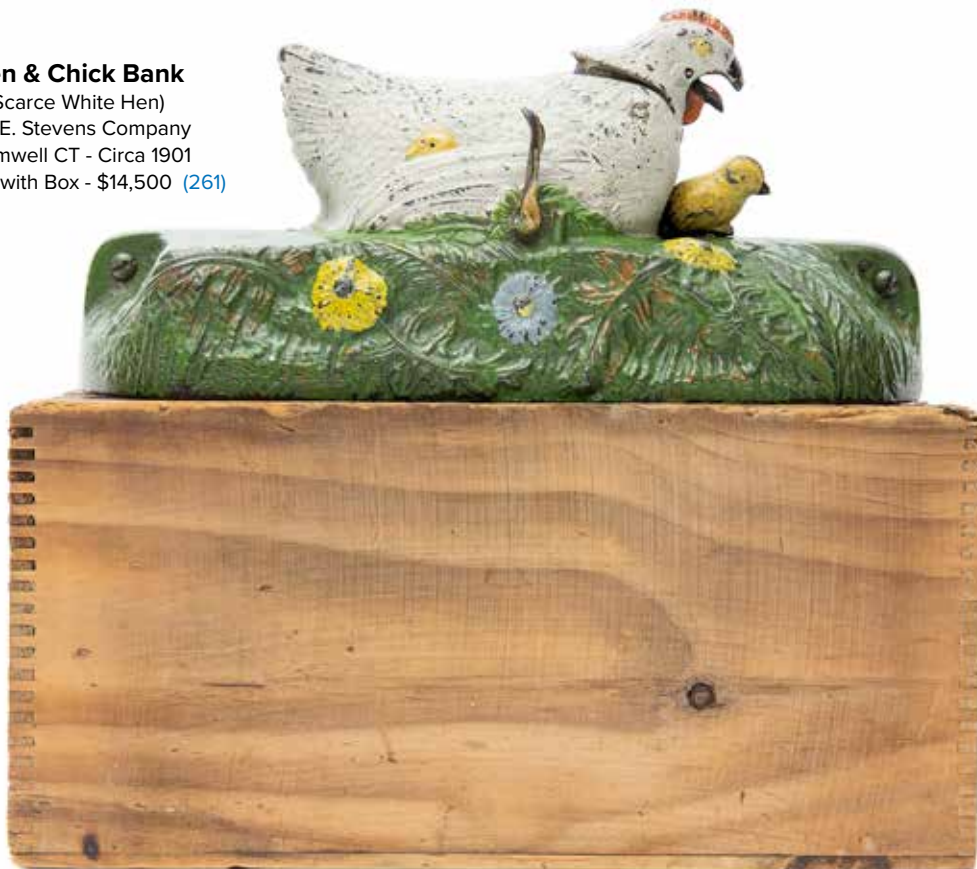
The girl is seen giving her dog barking lessons. As the penny drops into the garden bench, the dog's mouth opens and his tail wags.

### Hen & Chick Bank

(Scarce White Hen)

J. & E. Stevens Company  
Cromwell CT - Circa 1901

Pristine with Box - \$14,500 (261)



Charles Bailey's handiwork can be seen in the detailed foliage designs of the base. When the lever is retracted, a small yellow chick emerges from beneath her warm bosom and the coin drops into the base.

## Squirrel & Tree Stump

Mechanical Novelty Works  
New Britain, CT - 1880's  
Provenance - Frank Kidd Collection  
Pristine Plus Condition - \$12,500 (262)



Like the squirrel who hides his surplus acorns when times are good, the child who saves his spare pennies will turn them into dollars. Lessons on the virtues of thrift and economy were of vital significant to Victorian society.

## Boy Robbing Bird's Nest

J. & E. Stevens Company  
Cromwell, CT - 1897  
Excellent Plus Condition - \$8500 (264)



A boy discovers a bird's nest in the low lying branch of a tree. His curiosity peaked, he tosses his blue hat onto the grass and shimmies up the berry laden vines. As he edges his way towards the nest, the branch suddenly snaps, toppling both him and the nest to the ground.

## Rooster Bank

Kyser & Rex Company  
Philadelphia - 1880's  
Near Mint Condition - \$4500 (263)



Pennies are carefully balanced in the slot in the tail feathers of the bird. When the operating lever is pulled backwards, the rooster's head retracts and his beak opens and closes as if he is crowing for your coins.

## Eagle and Eaglets

Pale Green Base Variant  
J. & E. Stevens Company  
Cromwell, CT - 1880's  
Pristine Plus Condition - \$5500 (265)



This represents a particularly choice example of the Eagle and Eaglets Bank with a great profusion of fire engine red highlights.



## Mechanical Banks



**Tabby Bank**  
Unknown Maker  
American - 1890's  
Excellent Condition - \$2250 (266)



**Punch & Judy Bank**  
Rare Medium Letters  
Shepard Hardware Company  
Buffalo, NY - 1884  
Mint Condition - \$10,500 (267)



**Santa Claus Bank**  
Shepard Hardware Company  
Buffalo, NY - 1889  
Excellent Condition - \$3200 (268)

In the pantheon of mechanical toy banks, this is one of the very few models for which a distribution patent was registered in Great Britain.



**Clown on Globe**  
J. & E. Stevens Company  
Cromwell, CT - 1901  
Pristine with Box - \$6500 (269)



**Boy on Trapeze**  
aka French's Automatic Savings Bank  
J. Barton Smith  
Pennsylvania - Late 1880's  
Near Mint Condition - \$8500 (270)

This dynamic circus themed bank delivers two different actions, much to the delight of the viewer. First, set the lever in the up position and carefully turn the globe around. Watch the clown spin round and round when you push the lever down. Pushing the button found beneath the clown's posterior activates the second movement; he flips up into a handstand.

When adjusted properly, the weight of different coin sizes are meant to cause the trapeze artist to make a different number of revolutions. For a nickel, he will turn once and for a quarter, he will turn twice.



**Spring-Jawed Parrot**

Germany - 1920's  
Pristine Condition - \$3850 (271)



**Zoo Bank**

Kyser & Rex Company  
Philadelphia - 1890  
Excellent Condition - \$2450 (272)



**Spring-Jawed Monkey**

Germany - 1920's  
Pristine Condition - \$14,500 (273)

Press the face of the monkey and the shutters open, revealing the faces of a lion and bear.



**Monkey & Coconut**

J. & E. Stevens Company  
Cromwell, CT - 1880's  
Excellent Condition - \$2850 (274)

Darwin's Theory of Evolution provides the root inspiration for the imagery portrayed in this amusing bank.



**Bull Dog Bank**

J. & E. Stevens Company  
Cromwell, CT - 1880's  
Provenance - Frank Kidd Collection  
Mint Condition - \$9500 (275)

Without a doubt, this represents one of the most exalted specimens of the Bull Dog Bank.



## Mechanical Banks

### Harold Lloyd Bank

Germany - 1920's  
Excellent Condition - \$4500 (276)



### Pinball Vending Bank

Germany - 1920's  
Excellent Condition - \$750 (277)



### Cross Legged Minstrel

G. Levy Company  
London - 1909  
Pristine Condition - \$2850 (278)



### Minstrel Bank

Saalheimer & Strauss  
Germany - 1928  
Pristine Condition - \$875 (279)



### Little Jocko Musical Bank

Strauss Mfg. Company  
New York City - 1910's  
Excellent Plus Condition - \$6250 (280)



This unusual bank only operates after a penny is forcibly pushed through the slot in the monkey's cup.

### Mickey Mouse Bank

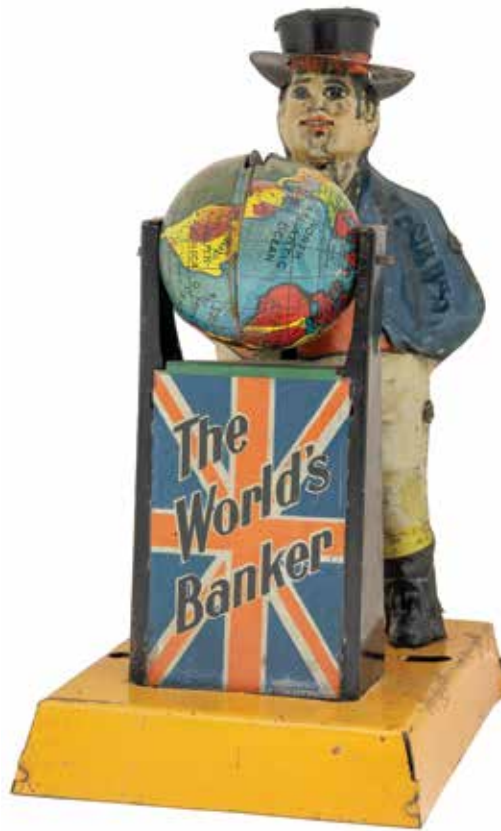
Hand Pointing Version  
Saalheimer & Strauss  
Germany - 1933  
Excellent Condition - \$7500 (281)







**Arched Top Sailor Bank**  
Probably English - 1930's  
Mint Condition - \$2250 (282)



**The World's Banker**  
Rare Lithographed Tin Bank  
Germany - 1920  
Excellent Condition - \$9500 (283)



**Arched Top Monkey Bank**  
Probably English - 1930's  
Mint Condition - \$1750 (284)

Depictions of John Bull, the symbolic personification of Great Britain, are extremely scarce and desirable in toy form.



**British Lion Bank**  
Saalheimer & Strauss  
Germany - 1920's  
Excellent Condition - \$3950 (285)



**Magie Bank**  
Germany - 1930  
Mint Condition  
With Rare Original Box - \$7500 (286)



**Teddy Bear Bank**  
Saalheimer & Strauss  
Germany - 1920's  
Excellent Condition - \$4950 (287)



## Mechanical Banks



### Easter Rabbit Cottage Bank

Paper Litho on Cardboard  
Germany - 1920's  
Pristine - \$2850 (288)

Gravity effectuates the deposit of pennies placed on the rabbit's tray.  
Extremely scarce.



### Santa Claus Cottage Bank

Paper Litho on Cardboard  
Germany - 1920's  
Near Mint - \$3500 (289)

In this sweet cardboard and wood bank, a magical living snowman deposits your coins into Santa's workshop.

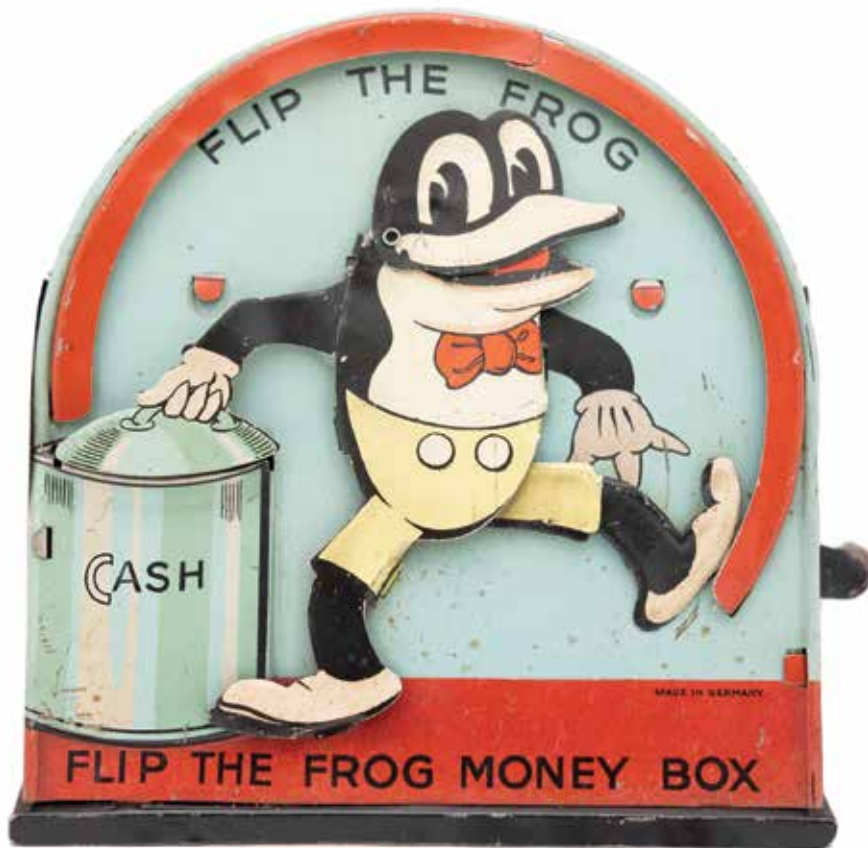


### Cyliax Kakao Vending Bank

Germany - 1925  
Pristine - \$4800 (290)

From their flagship store in Berlin, G. Cyliax offered a wide array of sweets that included jams, marmalades, biscuits, cocoas and chocolates. The graphics incorporated in this vending bank are some of the finest ever created. At this time there are only three known specimens of this unusual toy bank.





## Flip the Frog Money Box

Germany - 1930's

Made for the English Market

Provenance - Steckbeck Collection

Pristine Condition - \$62,500 (291)

Flip was the creation of long time Walt Disney friend Ub Iwerks. The animator left Walt Disney Studios and established his own cartoon studio. "Flip the Frog" was the first color/sound cartoon series distributed in the two-color British Multicolor system. For this reason the colorful croaker became extremely popular with British children. There is only one extant high quality specimen of "Flip the Frog" in the world.



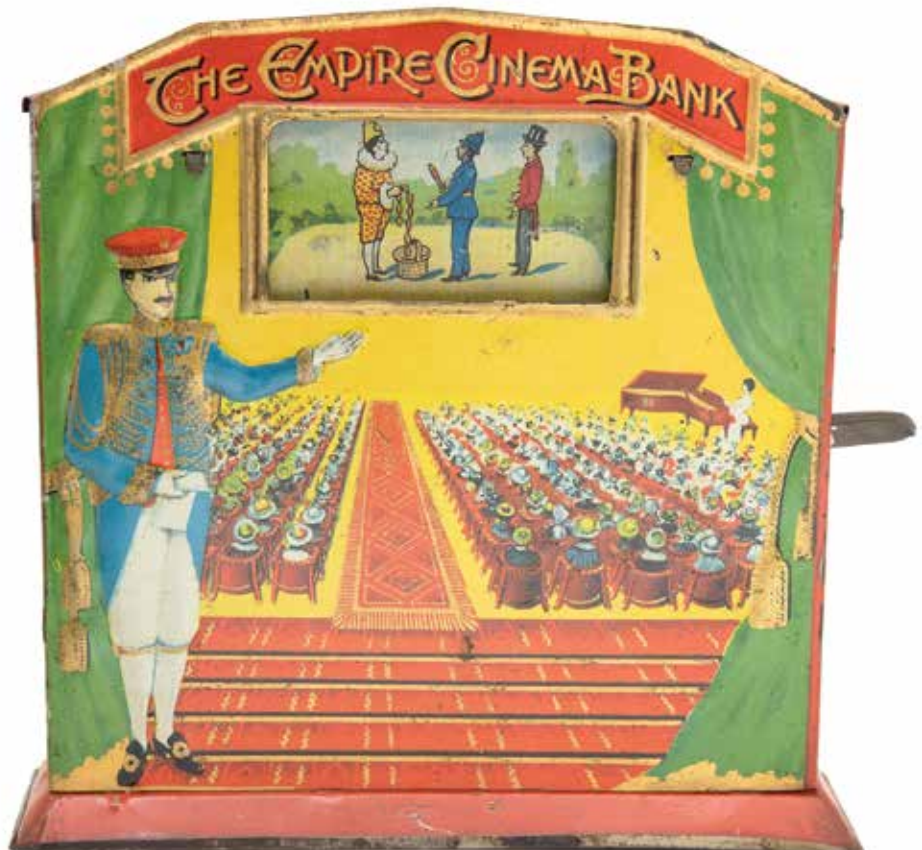
## The Empire Cinema Bank

Germany - Late 1910's

Made for the English Market

Pristine Condition - \$28,500 (292)

The Empire Theatre first opened in London's West End in 1884. Built at the north side of Leicester Square, it was operated as a variety theatre and ballet venue until its conversion to a film cinema in the years just before WWI. Perhaps this bank was made for sale and distribution at the theatre. When the curtains are closed, it reads, "Watch The Next Picture". The narrative is told in four images. In the first image a dapper gentleman and a clown meet in the park. In the second image the clown "eyes up" the sausages dangling from the picnic basket. In the third image he reaches over to grab them as the policeman looks on. In the final image, the policeman confronts the sausage thieving clown as the red coated gentleman looks on.





## Mechanical Banks



**Milking Cow Bank**  
J. & E. Stevens Company  
Cromwell, CT - 1890  
Excellent Plus Condition - \$18,500 (293)

The "Milking Cow" is one from the series of staged pedestal toy banks made by the Stevens Company in the late 19th Century. A young farm hand must milk the cow without encountering her objection to his task. Start by placing your penny in the slot found on the cow's back. Upon pushing the giant red flower, (which is the lever), watch as the cow uses her right rear leg to kick the boy and his milk pail off his stool. This is a sensational example of the bank.



### Mule Entering the Barn

Green Colored Barn  
J. & E. Stevens Company  
Cromwell, CT - 1880's  
Pristine Plus Condition - \$4500 (294)

This vividly colored bank depicts farm life in a very charming and whimsical way. It deploys a powerful brass spring to effectuate the action. Place a penny between the mule's hind legs. He somersaults into the barn to make your deposit when the lever is pressed. In the same moment, a small spotted dog runs out from the beneath the floorboards.



## Uncle Remus Bank

Kyser & Rex Company  
Philadelphia - 1890  
Excellent Plus Condition - \$13,500 (295)

Remus has gotten into a neighbor's chicken coop and attempts to "borrow" his supper. Unfortunately the constable interrupts his plans.

## Organ Grinder & Bear

Kyser & Rex Company  
Philadelphia - 1882  
Pristine Condition - \$9500 (296)

Two boys poke their heads above the fence to get a free preview of the trained bear show. On the surface, this bank appears sweet and folksy. However, to the contrary, the imagery actually draws from a very tragic American narrative. On closer inspection, we find that the organ grinder is a maimed Confederate soldier. Standing beside his large plantation, he looks desperate and dispirited. He has lost his left leg in the Civil War and can be seen with a peg leg. Since he can no longer farm effectively, he has needed to train a bear to receive your alms and support his family.



## Leap-Frog Bank

Shepard Hardware Company  
Buffalo, NY - 1890  
Excellent Condition - \$5500 (297)

Two little boys playfully leap frog over each others backs. When the boy in the yellow shirt touches the lever, the penny drops into the tree.



## Mechanical Banks



### William Tell Bank

J. & E. Stevens Company  
Cromwell, CT - 1897

Pristine Condition - \$2250 (298)

The folk narrative of William Tell was first described and illustrated in a Swiss chronicle from the late 15th Century.

### Octagonal Fort Bank

Unknown Maker  
American - 1880

Very Fine Condition - \$6250 (299)

The Octagonal Fort Bank appears to reference the land and sea conflict that took place at Fort Sumter. We find a tall fortification located at the shoreline. One single great black cannon is meant to illustrate the unending artillery bombardment that the South showered on the North. These were the first shots of the Civil War. However, in this telling of the narrative, coins are shot, not cannon balls.



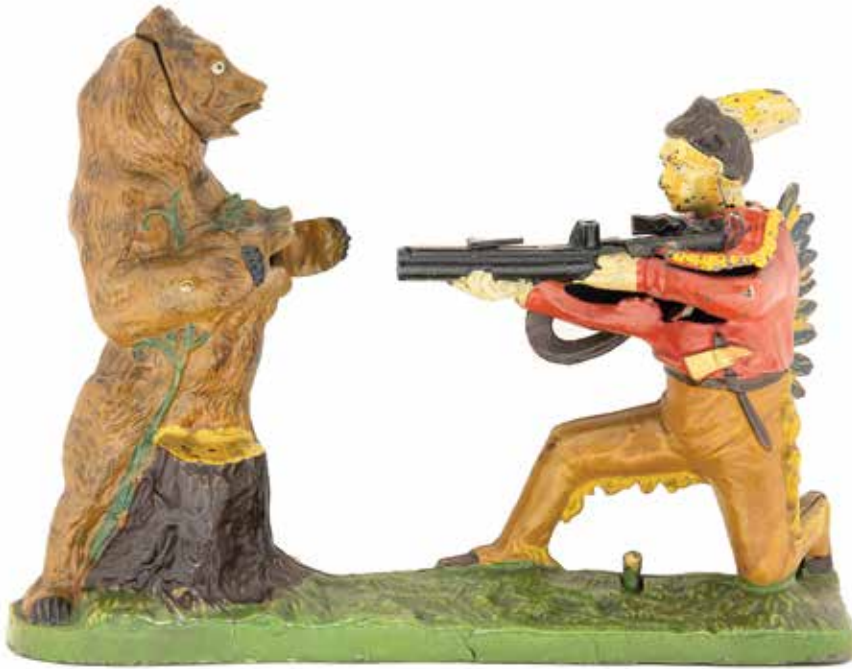
### Creedmoor Bank

J. & E. Stevens Company  
Cromwell, CT - 1880's

Pristine Condition - \$2250 (300)

The National Rifle Association (NRA) staged a series of long-range precision shooting competitions at its new facility on the Creed property in upstate New York. This bank showcases a foreign participant in that matchup.





## Indian and Bear

J. & E. Stevens Company  
Cromwell, CT - 1890's

Pristine Condition - \$5750 (301)

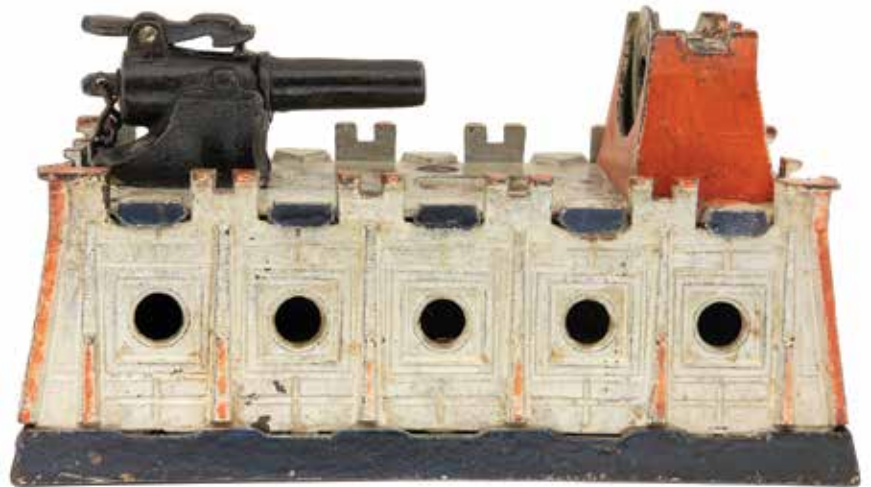
Stevens marketed this toy as the Bear Hunt Bank. From a crouching position, the young Indian Brave takes aim at the ferocious bear in front of him. The bear's mouth opens with a last defiant roar

## Hold the Fort Bank

Five Hole Version  
Samuel Clark Inventor  
Unknown Manufacturer - 1877

Excellent Condition (Minor Restoration) - \$7500 (302)

A terrific representation of an artillery fortification from the Civil War Era. Tiny steel BBs knock your pennies into the bank when the cannon is fired.



## Lion Hunter Bank

J. & E. Stevens Company  
Cromwell, CT - 1911

Pristine Condition - \$11,500 (303)

At the end of his term in office, Teddy Roosevelt went on an extended safari in Africa. The Lion Hunter Bank presents us with an image of Teddy as a brave man who possesses unlimited courage. He stares down the barrel of his rifle and looks unflinchingly into the eyes of the lion. Whether such celebrated anecdotes of TR's fearlessness are genuine or not, they provide the folklore upon which his legacy is based.



## Mechanical Banks



### Mason & Hod Carrier

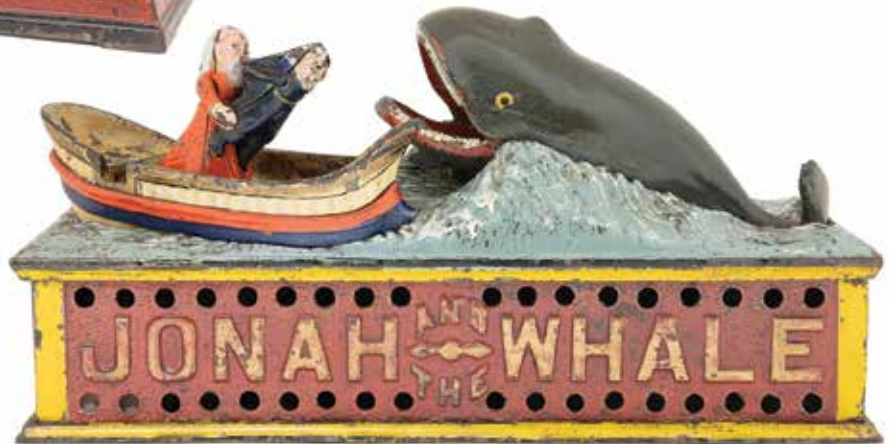
Shepard Hardware Company  
Buffalo, NY - 1890  
Excellent Condition - \$6750 (304)

Though the racism inherent in the Mason Bank is not immediately recognizable, it is nonetheless directly under our nose. The bank depicts two laborers. Who are these men? The brick layer is meant as the stereotype of an Italian immigrant and the hod carrier, with his orange hair and leprechaun facial features, clearly satirizes the Irish. Ironically, America's cities were built by men from immigrant populations such as these.

### Jonah and the Whale

Shepard Hardware Company  
Buffalo, NY - 1888  
Excellent Condition - \$4250 (305)

The parable of Jonah and the Whale plays out in three discreet chapters; disobedience to God while in his service, repentance for the misdeed and ultimately, forgiveness by God. Remarkably, all of these narrative elements are present in this tiny toy bank.



### "Give Me a Penny"

Magic Trick Drawer Bank  
Friend W. Smith Jr.  
Bridgeport, CT - 1870  
Near Mint Condition - \$3250 (306)

Pull the drawer out. A picture of a monkey rises and asks you for a penny.



### Lion and Monkeys

Taller Tree Variant  
Kyser & Rex Company  
Philadelphia - 1880's  
Pristine Plus Condition - \$6750 (307)

A mother and her infant monkey have scampered up the trunk of a tree to escape the razor sharp teeth of Mister Lion. They placate his need for nourishment by tossing him a penny.



**Clown Book Ends**  
Hubley Mfg. Company  
Lancaster, PA - 1940  
Mint Condition - \$975 (308)



**Merry-Go-Round**  
Semi-Mechanical Bank  
Grey Iron Casting Co.  
Mount Joy, PA - 1920's  
Mint-Mint-Mint - \$2850 (309)



**Humpty Dumpty Bank**  
Shepard Hardware Company  
Buffalo, NY - 1882  
Very Fine Condition - \$2500 (310)



**"Bill E. Grin"**  
J. & E. Stevens Company  
Cromwell, CT - 1915  
Excellent Plus Condition - \$6750 (311)  
Coins pushed through the slot in the clown's head cause his eyes to roll and his tongue to stick out.



**English Clown Bust**  
Chamberlain & Hill, Ltd.  
Walsall, England - 1920's  
Pristine Condition - \$12,500 (312)  
This gem is one of the top specimens of the English Clown Bust in the world.



## Mechanical Banks

### Bad Accident Bank

J. & E. Stevens Company

Cromwell, CT - 1888

Pristine with Box - \$9500 (313)

A farmer is seen driving his mule-drawn cart to market. Foolishly, he eats a slice of watermelon, taking his eye off the country road in front of him. Suddenly, a small boy emerges from behind some foliage. This frightens the mule, who rears backwards, ultimately toppling the cart. Reckless and neglectful behavior has caused a bad accident.



## 'Spise the Mule Bank

Jockey Thrown From Mule  
J. & E. Stevens Company  
Cromwell, CT - 1890

Pristine Plus Condition - \$4500 (314)

A young man dressed as a jockey sits atop the mule. The mule stubbornly refuses to move forward before the bank is operated. Place a coin below the jockey's tongue and push the button. The mule kicks his hind legs out and catapults the boy forward off his makeshift saddle.



## Peg-Leg Beggar

H. L. Judd Company  
Wallingford, CT - 1880

Excellent Condition - \$5250 (315)

A Civil War veteran, hat in hand, sits at the street corner and begs for charity. Such tragic sights were all too familiar to the generation of children born in the Reconstructionist Era. On a side note and of special interest, Judd Hardware lost a patent infringement case with J. & E. Stevens in civil court. They were required to pay Stevens \$2,200 which was a great sum of money in the 1880's.



## 'Spise the Mule Bank

Boy Seated on Bench  
J. & E. Stevens Company  
Cromwell, CT - 1897

Pristine Plus Condition - \$5250 (316)

A young boy attempts to give his mule some disciplinary education. He emphasizes this lesson with use of a rigged stick. But the mule outwits the boy by swinging around and kicking him in the face, flipping him onto his back.





## Mechanical Banks



### Clown, Harlequin & Columbine

Designed by James H. Bowen

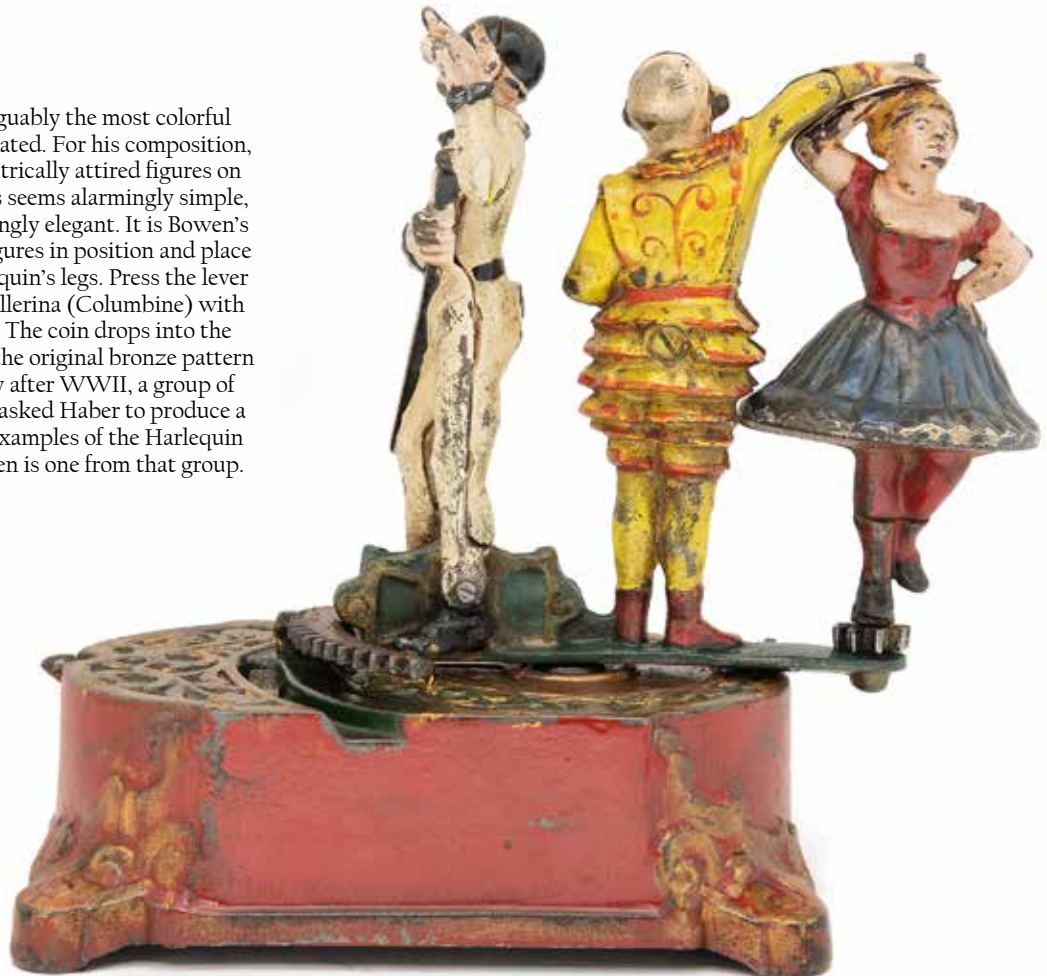
Secondary Production - 1950

J. & E. Stevens Company

Cromwell, Connecticut

Excellent Condition - \$14,000 [\(317\)](#)

The Harlequin bank is arguably the most colorful and animated bank ever created. For his composition, Bowen presents three theatrically attired figures on a silver and gold stage. This seems alarmingly simple, and yet, the effect is hauntingly elegant. It is Bowen's true masterpiece. Set the figures in position and place a penny between the Harlequin's legs. Press the lever and the clown spins the ballerina (Columbine) with great dexterity and poise. The coin drops into the stage. Mark Haber owned the original bronze pattern for this rare bank. Shortly after WWII, a group of early toy bank enthusiasts asked Haber to produce a small group of secondary examples of the Harlequin Bank. The present specimen is one from that group.



**Calamity Bank**  
Yale Tackles Harvard  
J. & E. Stevens Company  
Cromwell, CT - 1905  
Excellent Condition - \$28,500 (318)



The Calamity Bank portrays football as it was played at the beginning of the 20th Century. In this period, there were no professional leagues, rather football was established as a battleground between collegiate teams. Long standing rivalries emerged at that time that still exist today. Perhaps the most notorious is the one between Harvard and Yale. These are the two teams depicted in the Calamity Bank. In the present example we find two defense tacklers from Yale (Blue Details) taking down a running fullback from Harvard (Crimson Details). The ball players wear only flimsy leather epaulets and beanie caps. Such nominal protective gear often caused serious injury among the players. This is re-enacted by the action of the bank in which the tackle is characterized by head butting and violent crashing into each other. Teddy Roosevelt, who had a dim view of collegiate football, had planned to incorporate the abolition of the game into his platform for reelection in 1904. Luckily his political advisors talked him out of it.





## Mechanical Banks

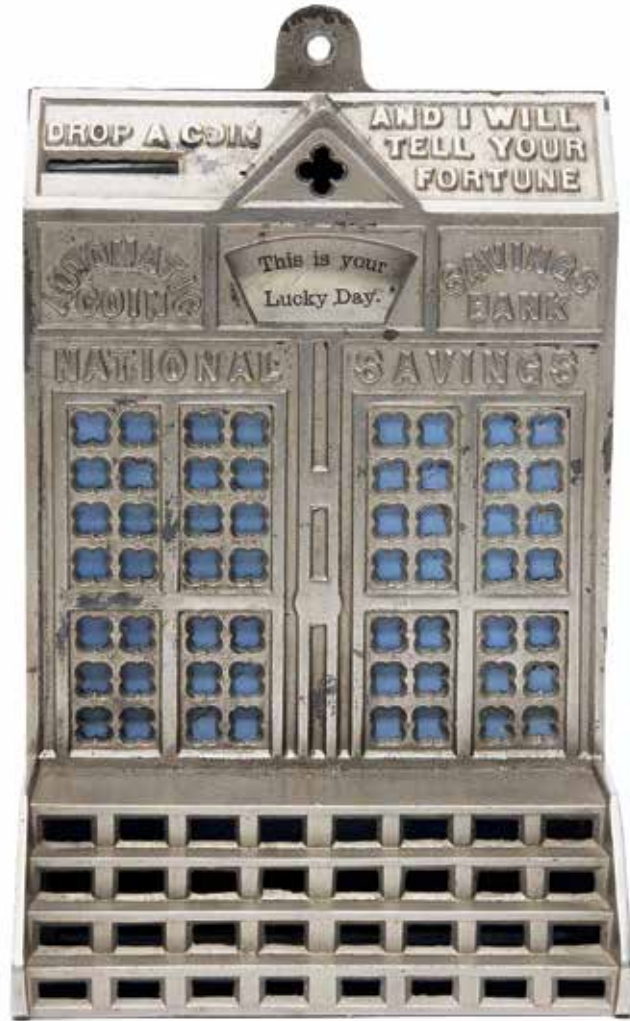
### Automatic Coin Savings Bank

Unknown Manufacturer

American - 1890

Near Mint Condition - \$8250 [\(319\)](#)

This represents an extremely scarce nickel plated version of the bank. Produced during the Gilded Age, this would have resembled a gleaming silver ornament. In the present example, we find a small cast iron tongue with a hole in it at the top of the bank. This allowed the owner the option of hanging it on the wall.



### U. S. Bank with Spires

A Scarce Bronze Example

French - 1875

Pristine Condition - \$14,500 [\(320\)](#)

Over the years, several early copies of American mechanical banks appear to have been produced during the same period in France. These have included examples of the US Bank, the Magic Bank, the Hold the Fort Bank and the Home Bank, among others. In most cases, the French embellished their output with fanciful spires. This particular bank was for many years a proud component of the Mosler Collection.

**Hold the Fort - 5 Holes**

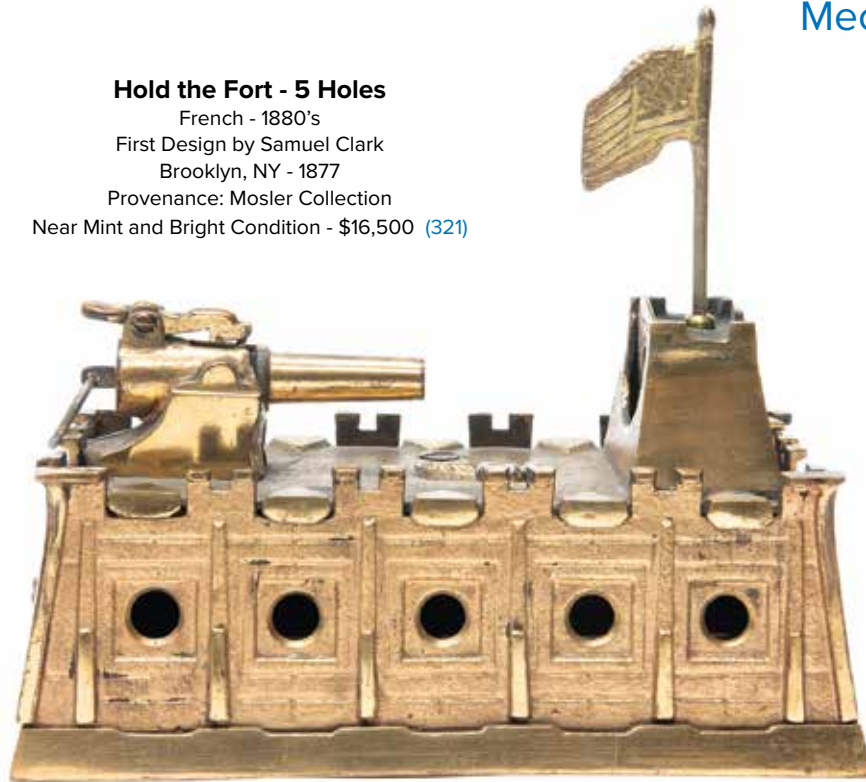
French - 1880's

First Design by Samuel Clark

Brooklyn, NY - 1877

Provenance: Mosler Collection

Near Mint and Bright Condition - \$16,500 [\(321\)](#)



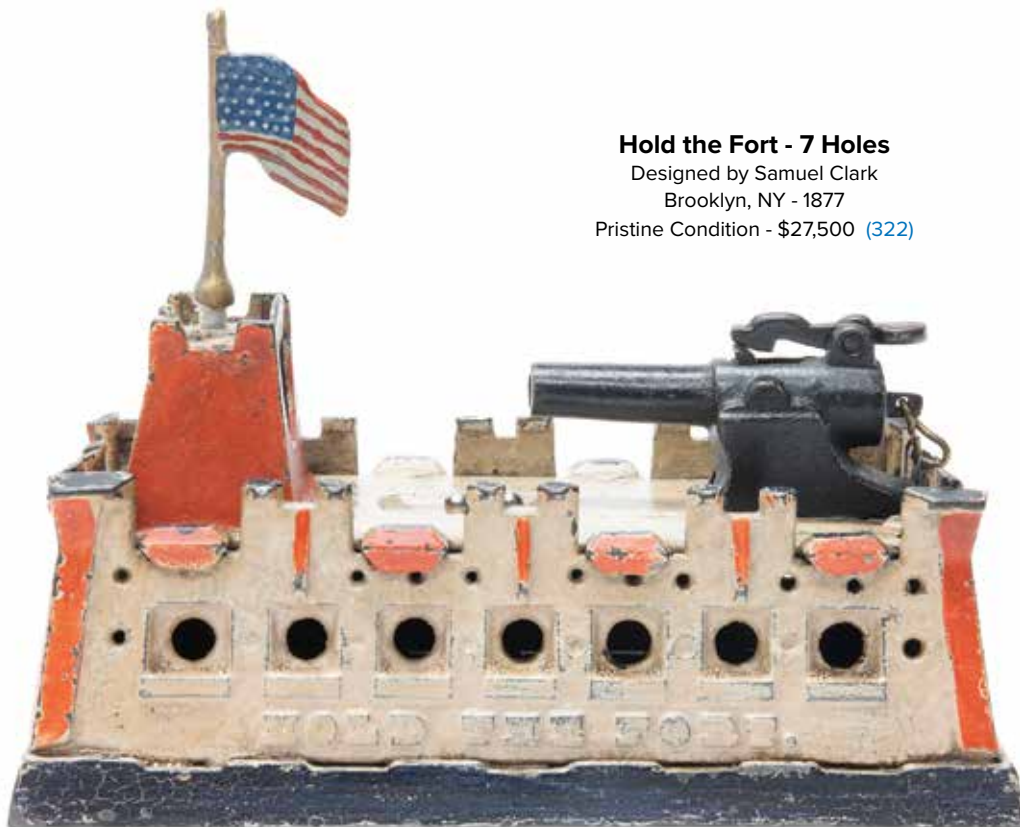
Here again, we find a very unusual all bronze version of an American bank. It is definitely not a pattern, but rather a production piece made to satisfy the demand for glittering metallic toy banks in Europe. Like the U. S. Bank presented in this catalog, we feel this specimen of Hold the Fort is most probably French.

**Hold the Fort - 7 Holes**

Designed by Samuel Clark

Brooklyn, NY - 1877

Pristine Condition - \$27,500 [\(322\)](#)



When the Civil War ended, many munitions foundries were repurposed to create a diverse array of products in cast iron. Even children's toys were fashioned from cast iron in the postbellum era. Mechanical bank enthusiasts have long held a special fascination for a small group of banks inspired by military events of the War Between the States. This particular bank appears to reference the battle waged at Fort Sumter near Charleston, South Carolina on April 12, 1861. Confederate artillery fired upon the garrison, and the Union forces were compelled to flee when the supply line to the fort was cut off.



## Mechanical Banks



### Pig in Highchair

J. & E. Stevens Company  
Cromwell, CT - Dated 1897  
Pristine Condition - \$1800 (323)

Here is another bank made during the height of the gilded age. Like a gleaming piece of silver our cloven-hooved little friend gobbles down our pennies.



### Gem Registering Bank

J. & E. Stevens Company  
Cromwell, CT - 1893  
Excellent Condition - \$1450 (324)

### Novelty Bank

Yellow, Red & Blue  
J. & E. Stevens Company  
Cromwell, CT - 1880  
Near Mint Condition - \$5500 (325)



### Teddy and the Bear

J. & E. Stevens Company  
Cromwell, CT - 1906  
Pristine Condition - \$4500 (326)

Conservationist Teddy Roosevelt was associated with brown bears from the outset of his presidency. The coin is jettisoned from Teddy's gun, entering a slot in the tree when the bear suddenly pops up from within.





**"Old Black Joe"**  
Self-Walking Figure  
Ives, Blakeslee Company  
Bridgeport, CT - 1877  
Pristine Condition - \$4850 (327)



**General Butler**  
Self-Walking Figure  
Ives, Blakeslee Company  
Bridgeport, CT - 1877  
Pristine with Box - \$6850 (328)



**Santa Claus**  
Self-Walking Figure  
Ives, Blakeslee Company  
Bridgeport, CT - 1877  
Excellent Condition - \$4850 (329)



**Caped Arab with Rifle**  
By A. Theroude  
French - 1890  
Pristine Condition - \$2850 (330)



**Zouave Autoperipatetikos**  
American - 1890  
Pristine with Box - \$3850 (331)



**Caped Blackamoor with Rifle**  
By A. Theroude  
French - 1890  
Near Mint Condition - \$3500 (332)



## Clockwork Toys



**Cakewalk Dancers**  
Ives, Blakeslee Company  
Bridgeport, CT - 1880  
Provenance - Haradin Collection  
Excellent Condition - \$5500 [\(333\)](#)



**Monkey Churning Butter**  
Ives, Blakeslee Company  
Bridgeport, CT - 1880  
Excellent Condition - \$6250 [\(334\)](#)



**Woman's Rights Advocate**  
Ives, Blakeslee Company  
Bridgeport, CT - 1880  
Excellent Condition - \$6250 [\(335\)](#)

This scarce and desirable activist is an image of the historical figure, suffragette Sojourner Truth.



**Plantation Jigger**  
Brower's Patent  
Connecticut - 1875  
Excellent Condition - \$4450 [\(336\)](#)

## Juba Dancers

Automatic Toy Works  
Connecticut - 1875 - 8" Tall  
Pristine Condition - \$2500 (337)



This toy has a wonderful brass plaque on the reverse side of the base that identifies it as having been sold at a fancy scientific shop in London. An extremely superior example of this toy.

## Circus Bear with Pole

Probably Ives, Blakeslee  
Bridgeport, CT - 1880's - 9"  
Pristine Condition - \$2250 (338)



## Young Queen Victoria

Autoperipatetikos Doll  
American - 1865 - 9" Tall  
Near Mint with Box - \$2250 (339)



This doll typically has a pressed papier-mâché head. The glazed china portrait bust of Queen Victoria presents us with another instance of an American toy maker providing a product for the European market.

## Mechanical Tricyclist

Stevens & Brown Company  
Connecticut - 1880 - 8" Tall  
Pristine Condition - \$2500 (340)



Stevens & Brown offered their iconic mechanical tricycle with both boy and girl riders, either with blonde hair or dark hair. They even marketed an African-American male rider on this tricycle.



## American Toys

### Oxen Drawn Farm Dray

By Merriam Mfg. Company  
Durham, CT - Circa 1880  
Near Mint Condition - \$5500 (341)

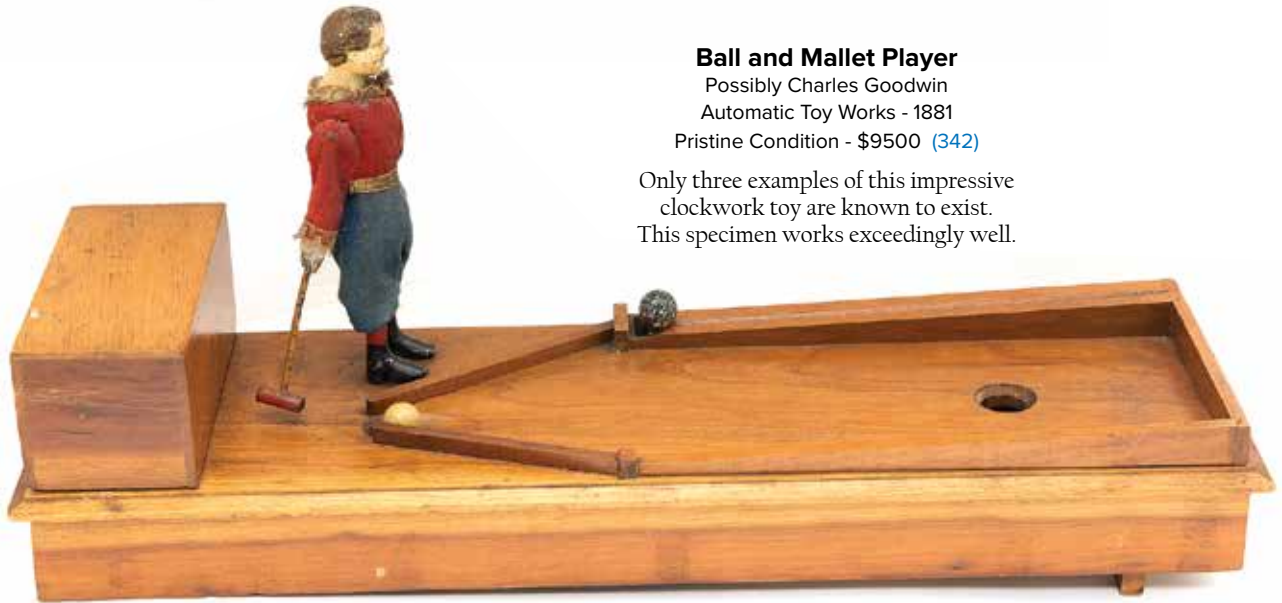
Examples of early American tin toys are only seldom found in such beautiful condition as this toy. The farmer seated in the dray's bed is also a very unusual feature of this lovely toy.



### Ball and Mallet Player

Possibly Charles Goodwin  
Automatic Toy Works - 1881  
Pristine Condition - \$9500 (342)

Only three examples of this impressive clockwork toy are known to exist. This specimen works exceedingly well.



### Fire Pumper

American Tin Bell Toy  
James Fallows Company  
Philadelphia - 1880's  
Provenance - Barenholtz Collection - \$3750 (343)

The ringing bell configuration is a very desirable feature of this American tin toy.



### The Bicycle Rider

By Althof-Bergmann  
New York City - 1877  
Perelman Toy Museum Collection  
Excellent Condition - \$8500 (344)



An adventurous athletic boy takes his boneshaker bicycle out for a spin. Give the toy a good wind and he will circle round and round. The bicycle has grooved wheels that fit on the decorated track. It is powered by a wire arm from the clockwork mechanism located in the central round housing. This rare toy was patented by John Conklin of Seneca Falls, New York.

### Central Park Carousel

By Althof-Bergmann  
New York City - 1880  
Excellent Condition (Cloth Canopy Restored) - \$8500 (345)



Before the advent of dedicated amusement parks, carousels were erected and taken down at state and local fairs. Of course, they were relatively small in scale. In their earliest form these small wonderments were powered by hand. When the toy is wound, we observe the ride operator cranking up and down while the horses and gondolas with their riders, go round and round.





**Circus Acrobat and Trainer**

Rare Mechanical Hoop Toy

Althof Bergmann

New York City - 1880

Provenance - Bill Jones Collection - \$12,500 [\(346\)](#)

The mechanical action for this toy is extremely unique. The hoop can be played with by itself. The laws of physics would cause the hoop to roll forward in a straight line. When it is tethered to the trainer who pivots on a heavy cast lead base, the toy will circle around the trainer.



**Patriotic Hoop Toy**  
By the George Brown Company  
Forestville, CT - 1875 - \$13,500 [\(347\)](#)

For the Centennial of the United States, the George Brown Company created a small group of extravagant patriotic mechanical toys. Concentric hoops of different size cause the flag waving boy to roll in a circular pattern. This was a very costly and fragile toy and therefore, very few examples have survived into modern times. The minimalist design of the mechanical hoop renders it a visual stunner.





**Mechanical Tricyclist**

French - 1895

Toy works well.

9 1/2" x 10 1/2"

Excellent Condition - \$5500 [\(348\)](#)



**Large Clown Tricyclist**

French - 1895

Toy works well.

14" x 15"

Very Fine Condition - \$7500 [\(349\)](#)



**Mechanical Circus Acrobat**

Peddles with his Hands

Probably by Descamps

French - 1895 - 12"

Pristine Condition - \$7000 (350)

When the toy is wound the clown acrobat simulates pedaling the small front wheel with his hands. The toy is in a remarkable state of preservation and it works well.



**Early Automotive Trap**

French - 1895

9 1/2" x 10"

Pristine Condition - \$5250 (351)

With its bisque headed chauffeur doll, this fascinating early automobile has a sensitive feminine look. In the day, such vehicles were referred to as horseless carriages because the very same coach and wheel makers assembled them. It is interesting to note that this toy does not have a clockwork mechanism. It is remarkably well preserved.



## European Toys

### Delicate Horse Drawn Sleigh

Made by Lutz  
Germany - Circa 1880 - 10" long  
Excellent Condition - \$14,500 [\(352\)](#)



The epitome of childhood. This delicately crafted and ornately detailed horse drawn sleigh demonstrates the expert craftsmanship of the early German makers.



### Fortified Bridge

Made by Gebruder Bing  
Nuremberg Germany - Circa 1909  
30" long ( 69" with ramps) x 14" deep  
Excellent Condition \$5800 [\(353\)](#)



### Elephant Bell Toy

Made by N. N. Hill  
Connecticut - 1895  
Pristine Condition - \$1350 (354)



### Frog Rides Turtle

Rare Figural Bell Toy  
Made by N. N. Hill  
Connecticut - 1900  
Near Mint Condition - \$1250 (355)



### Ding Ding Bell Toy

Pussys Not in the Well  
Made by Gong Mfg. Company  
Connecticut - Circa 1890  
Excellent Condition - \$2750 (356)



### Double Tramp Bell Ringer

Made by Gong Mfg. Company  
Connecticut - Circa 1890  
Finest Known Example  
Near Mint Condition - \$6500 (357)

The single figured "Tramp" bell toy is as common as can be. However, this gorgeous gem, which presents two tramps spinning on what looks like a six-petaled flower, is as rare as hen's teeth.



## Cast Iron Automotive

### Automotive Spider Phaeton

Made by Harris Toy Company  
Toledo, Ohio - 1900 - 6" Long  
Excellent Condition - \$1250 [\(358\)](#)



### Stutz Bearcat Roadster

By Kilgore Mfg. Company  
Westerville, Ohio - 1928 - 10 1/2" Long  
Excellent Condition - \$1950 [\(359\)](#)

### Buick Four Door Sedan

With Whitewall Tires  
Arcade Mfg. Company  
Freeport, IL - 1933 - 8 1/2" Long  
Excellent Condition - \$2500 [\(360\)](#)



### Mid-Size Yellow Taxi

Arcade Mfg. Company  
Freeport, IL - 1928 - 9" Long  
Pristine Condition - \$1650 [\(361\)](#)



## Alphonse & Gaston

Comic Character Auto  
Kenton Hardware Co.  
Kenton, OH - 1911 - 7 1/2"

Excellent Condition - \$4800 (362)

Alphonse & Gaston was a turn of the century American comic strip by Frederick Oppen. It featured a clumsy pair of Frenchmen who had an overly developed sense of politeness. Even seated, they can be seen obsequiously bowing to one another.

## Rare Katzenjammer Kids

Articulated Spanking Toy  
Kenton Hardware Co.  
Kenton, OH - 1910 - 11 1/2"

Excellent Condition - \$2850 (363)

The Katzenjammer Kids featured Hanz & Fritz a wild set of twins who often rebelled against the authority of their mother, Mama K. Here, we see she has rounded up her "bad boys" with her donkey dray and she disciplines Fritz over her lap while Hanz is seen bellowing because he knows that he is next.



## Sight Seeing Auto

Scarce Comic Character Toy  
Kenton Hardware Co.  
Kenton, OH - 1911 - 10 1/4"

Pristine Condition - \$8500 (364)

This rare automotive charabanc features five of the most important characters from turn of the century comic strips. Included are the Sailor, Der Captain, Mama Katzenjammer, Gloomy Gus and Happy Hooligan. This incredibly scarce toy never turns up complete and in such wonderful condition as this one.



## Cast Iron Toys

### Back-to-Back Trap

Kenton Hardware Company  
Kenton, OH - 1900 - 13"

Excellent Condition - \$4500 (365)



### Hansom Cab

By Welker & Crosby  
Brooklyn, NY - 1890 - 13"

Excellent Condition - \$4500 (366)



### Fancy Landau

with Opening Doors  
Wilkins Mfg. Company  
Keene, NH - 1895 - 15 3/4"

Pristine Condition - \$4500 (367)



### Spider Phaeton

Lady & Dog Passengers  
Hubley Mfg. Company  
Lancaster, PA - 1900 - 13 1/2"

Very Fine Condition - \$4500 (368)





### Two Seat Surrey

By Welker & Crosby  
Brooklyn, NY - 1889 - 15"

Mint Condition - \$19,500 (369)

It could be reasonably argued that this delicate cast iron toy is the most beautiful fancy carriage ever created. Details such as hand painted pin stripes and flourishes decorate the body of the carriage.

And for the saddle of the horse Welker & Crosby deployed four different colors: blue, red, gold and black.



### Horse Drawn Dog Cart

Rare Oversized Scale  
Ives, Blakeslee Company  
Bridgeport, CT - 1890 - 16"  
Pristine Condition - \$18,500 (370)

Few fancy carriage toys were ever made in a large scale format, however Ives, Blakeslee & Company presents us with three noteworthy exceptions; a hansom cab, a dog cart and a cutter sleigh. This dazzling trio represents the most beautifully detailed cast iron toys ever produced and brought to market.





## Cast Iron Toys

### Two Horse Hose Reel

Dent Hardware  
Fullerton, PA - 1912 - 21"  
Mint Condition - \$6250 [\(371\)](#)



### Two Horse Fire Pumper

Oversized Format  
Kenton Hardware Company  
Kenton, OH - 1910 - 24"  
Near Mint Condition - \$6750 [\(372\)](#)



### Three Horse Hook & Ladder

Electroplated Finish  
Dent Hardware  
Fullerton, PA - 1914 - 30 1/2"  
Excellent Condition - \$5250 [\(373\)](#)



**The #53 Fire Pumper**

Buffalo Malleable Iron Toy Co.  
New York - 1890 - 19"

Near Mint Condition - \$7500 (374)



**Fire Chief Buckboard**

Wilkins Hardware  
Keene, NH - 1895 - 12 1/2"  
Excellent Condition - \$3750 (375)

**F. D. Chief Wagon**

Pratt & Letchworth  
Buffalo, NY - 1892 - 14"  
Pristine Condition - \$5500 (376)



**Hook & Ladder**

Rare Deluxe Example  
Pratt & Letchworth  
Buffalo, NY - 1892 - 24"  
Pristine Condition - \$6500 (377)





## Cast Iron Toys

### Overland Circus Carriages

Kenton Hardware Company

Kenton, OH - 1940's

Near Mint Condition - \$3450 for the Set (378)



This trio of circus toys constitutes a complete set known as the "Overland Circus". In the field of cast iron animal-drawn toys, their late-period production is a real chronological aberration. By 1940, a generation of children had already enjoyed playing with cars, trucks and other forms of automated transport. In fact, as early as 1910 toy makers had seen a rapid decline of interest in animal drawn vehicles. Why then, did Kenton Hardware Company introduce this group of animal drawn toys in late 1939? With their vivid patriotic hues, it seems plausible that they represent a sort of "American" nostalgia for simpler and safer times. The bombing at Pearl Harbor forced the United States to join its European allies in their conflict with Germany. It also immediately necessitated the end of cast iron toy production. However, Kenton resumed production of their "Overland Circus" set when WWII came to an end.



## **"Star Brand Shoes"**

Promotional Giveaway  
American - 1917 - 8 1/4"

Excellent Condition - \$2250 (379)

In an effort to secure your loyal business, rival shoe companies often offered these advertising gifts as an incentive.

## **Beach Patrol Surfer**

Hubley Mfg. Company  
Lancaster, PA - 1930 - 7 3/4"

Very Fine Condition - \$8250 (380)

Hubley offered this unusual toy with both a male and female surfer. They were intended as advertisement for Jantzen Bathing Suits of Portland, Oregon.



## **Automotive Overland Circus**

Lion Cage Wagon  
Kenton Hardware Company  
Kenton, OH - 1928 - 7 1/4"

Near Mint Condition with Box - \$4500 (381)

Kentons automotive menagerie trucks are exceedingly scarce. This lion cage is from the smaller size format. It is the only example we have ever seen complete with its cardboard box.



## Cast Iron Toys



### **Popeye Spinach Motorcycle**

Authorized by King Features  
Hubley Mfg. Company  
Lancaster, PA - 1938 - 5 1/2"  
Near Mint Condition - \$1650 [\(382\)](#)



### **Fire Chief Wagon**

Miniature Scale  
Hubley Mfg. Company  
Lancaster, PA - 1906 - 11 1/4"  
Pristine Condition - \$1075 [\(383\)](#)



### **Champion Policeman**

on Blue Motorcycle  
Hubley Mfg. Company  
Lancaster, PA - 1935 - 5"  
Near Mint Condition - \$385 [\(384\)](#)



### **Elaborate Fire Pumper**

Kenton Hardware Company  
Kenton, OH - 1938 - 15"  
Excellent Condition - \$1950 [\(385\)](#)



### **Deluxe Ladder Truck**

Kenton Hardware Company  
Kenton, OH - 1938 - 21"  
Pristine Condition - \$2250 [\(386\)](#)

**1908 Presidential Advertisements**

American Circa 1908

\$2,800 (387)

William J. Bryan vs. William H. Taft



**Land on Roosevelt Elephant**

Made by Kenton 1936

Near Mint Condition - \$950 (388)

**Santa Sleigh in Blue**

Made by Hubley

Lancaster Pennsylvania Circa 1900

Excellent Condition - \$2800 (389)



**Flying Artillery**

Made by Ives

Connecticut Circa 1885

Excellent Condition - \$8500 (390)



An iconic toy. Exceptional condition on this rare galloping version.



## Folk Art

### Michael Rothloff (1855-1930)

Athens, Pennsylvania

Active carver from 1905 to 1930

Maggie and Jiggs Figures - \$8500

Charlie Chaplin Figure - \$7500 (391)

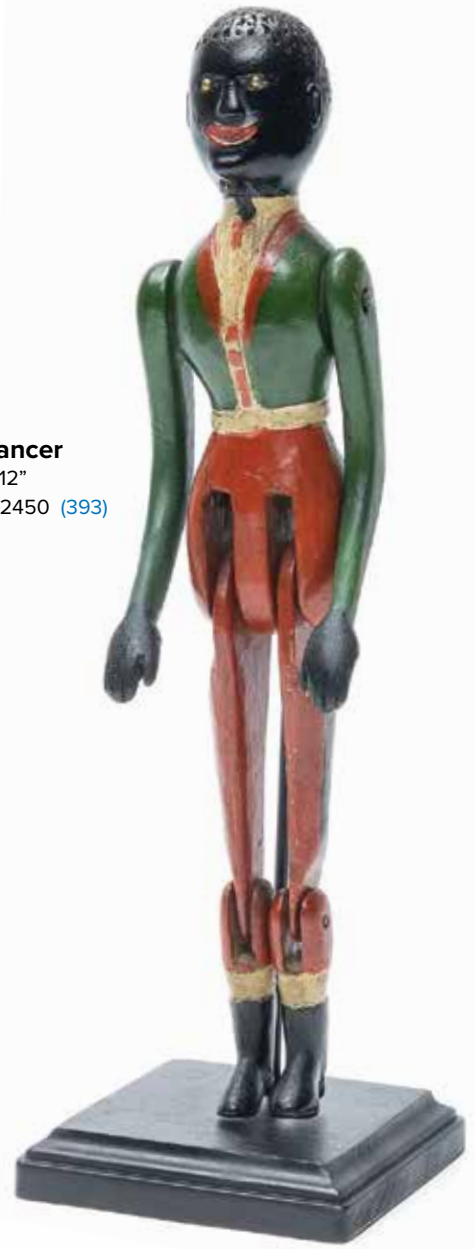
Michael Rothloff and his wife Anna were emigrants to the United States from Leitzburg, Germany. They arrived in 1880 and settled in Athens, Penn. They had eight children together. For many years, Rothloff was employed by a local furniture company as a master cabinet maker and veneerer. Once retired, he turned his passion for wood-working towards creating small carvings of human and animal figures. This included historic personages, suffrage activists, circus acrobats, devils, skeletons, local townspeople and a vast array of four legged critters.

Thirty years ago, Gemini Antiques had the good fortune to acquire a significant body of Rothloff's work at an auction in New York City. Those amazing magical carvings introduced us to the most famous folk art collectors in the country. It was exciting to offer the work to the likes of Bob Bishop, Herbert Hemphill, Ralph Esmerian and Barney Barenholtz, among others. Today, the Museum of American Folk Art owns a good collection of Rothloff carvings. The present three figures surfaced at a later date. They patently illustrate Rothloff's keen awareness of the "pop culture" of his day. Charlie Chaplin was the great movie star of the Silent Era and Maggie & Jiggs were the notorious arguing comic strip spouses serialized in the newspapers.





**Dancing Black Dandy**  
Early Whirligig Wind Toy  
American - 1860's - 13"  
Stunning Original Patina - \$8800 [\(392\)](#)



**Articulated Jig Dancer**  
American - 1860 - 12"  
Extraordinary Condition - \$2450 [\(393\)](#)



**Harlequin String Toy**  
English - 1875 - 13 1/4"  
Outstanding Condition - \$2450 [\(394\)](#)





**The Royal Hussar**  
Dredging Company Barge  
By the Bliss Mfg. Company  
Pawtucket, RI - 1895 - 18 1/2"  
Excellent - \$1450 (395)

**Milk License No. 4  
Delivery Wagon**

By the Bliss Mfg. Company  
Pawtucket, RI - 1895 - 16"  
Excellent - \$3850 (396)

At this time, we believe this to be the only known extant specimen of the this beautiful paper lithographed toy. The milkman and the jugs of milk are original to the toy.



**Ding Dong Bell  
Shooting Target Game**

By the Bliss Mfg. Company  
Pawtucket, RI - 1895 - 14 1/2"  
(Two Knobs Lacking)  
Excellent - \$1250 (397)

**“BANDY” Drum Major Doll**

Advertising Mascot for GE  
Art Quality Cameo Products  
Allegany, PA - 1940's - 19"  
Pristine & Bright - \$1875 (398)

**“Happy Hotpoint” Pixie Doll**

Advertising Mascot for Hotpoint Stoves  
Art Quality Cameo Products  
Allegany, PA - 1950 - 15 1/2"  
Near Mint & Bright - \$1650 (399)

**Patriotic Teddy Bear Assemblage**

Steiff and Various Other Makers  
American - 1910's - 19 1/2"  
Astonishing Construction - \$4500 (400)

This is one of the sweetest and most appealing objects that we have seen in a very long time. Some clever collector of toys and patriotic memorabilia has put together a wonderful composition with the use of a late 19th century drum and an early period Steiff Teddy Bear. Other adornments include a clicker, a noisemaker, a candy box, a fan and five 48 star flags. Simply delightful!!!





**Collection of 15 Hat Stands**

Mixed Makers and Origins

All Circa 1925 to 1940

Smallest is 8 1/2" & Tallest is 11"

Excellent to Near Mint - \$2450 (401)

This group includes 2 animals, 3 portrait busts, 2 soldiers, 3 full figures, 2 ladies heads, 2 stylized flowers and a bizarre spotted abstraction.



**Collection of 15 Hat Stands**

Mixed Makers and Origins

All Circa 1925 - 1950

Smallest is 9" & Tallest is 12"

Excellent to Near Mint - \$2950 (402)

This group includes a clown, a gendarme, a Noel Coward Dandy a roaring 20's head, an apple, 2 full figures, a top hatted head, 2 abstract Asian girls and 5 ladies heads.



## Squeak Toys

### The Nodding Mallard

Platform Pull Toy  
Germany - 1900  
15" Long x 14" Tall  
Pristine - \$7500 (403)



### Doberman Squeak Toy

Germany - 1875 - 10 1/2"  
Excellent - \$4800 (404)



### Dachshund Skittle Set

Germany - Late 1920's  
16" Long x 10" Tall  
Excellent - \$3850 (405)



This amusing toy includes seven skittles and three original wood balls. Children enjoyed setting the pins up and playfully knocking them down.

## Noah's Ark Toys

Noah's Ark toys are commonly referred to as "Sunday Toys" because they were most often played with after church service in the hours before dinner. Gathering together as a family, parents could reenact the narrative of the catastrophic deluge with their children. In this way, The Noah's Ark toy functioned to stimulate the development of good character and spiritual awareness. Remember, it had been humanity's selfish ways and corrupt sense of morality that had prompted God to punish mankind with the flood in the first place. The Noah's Ark could serve another instructional purpose as well. Just as Noah, his wife, sons and daughters-in-law were meant to select all the various species for safe harbor on the ark, the parent might hold each animal up and ask their child to identify and name each type of animal before it was safely put back in the ark. Today, these colorful ark toys are feverishly competed for by lovers of folk art.



### Early Blue Noah's Ark

Germany - Circa 1850 - 19" Long  
Includes Sixty Plus Pairs of  
Animal, Bird and Human Figures  
Excellent Patina - \$8250 (406)

### Monumental Noah's Ark

Germany - Circa 1875 - 30" Long  
Includes Fifty Plus Pairs of  
Animal, Bird and Human Figures  
(Expert Restoration to Roof Lid)  
Excellent Condition - \$8500 (407)



### Cream Colored Noah's Ark

Germany - Circa 1895 - 18" Long  
Includes 40 Plus Pairs of  
Animal, Bird and Human Figures  
Outstanding Condition! - \$6250 (408)





## Squeak Toys



**Chanticleer Candy Container**

Head Marked "2340L"

Germany - 1895 - \$2500 (409)



**Double Rooster Platform Toy**

Erzegebirge, Germany - 1840's - \$3850 (410)

German carved wood toys of this quality seldom turn up in the market place.



**Dove Squeak Toy**

Germany - 1870 - \$750 (411)



**Nodding Soldier**

Germany - 1880 - 8"

Excellent Condition - \$1650 (412)



**Turkey Squeak Toy**

Germany - 1890 - \$1075 (413)



**Court Jester Riding Rooster**

Unusual Articulated Action

Germany - 1900 - \$2500 (414)

**Heron Squeak Toys**

Germany - 1890

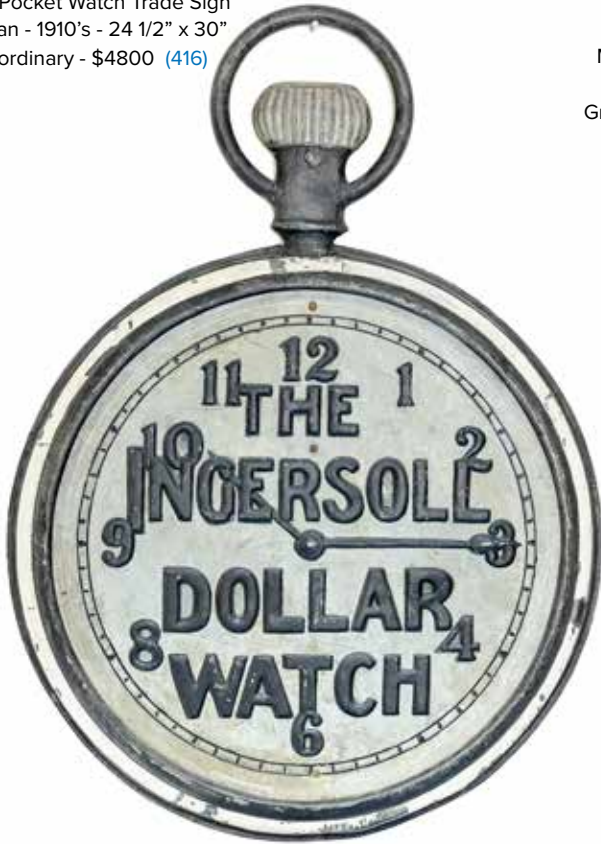
9" Heron \$750

6 1/4" Heron - \$675 (415)



### The Ingersoll Dollar Watch

Classic Pocket Watch Trade Sign  
American - 1910's - 24 1/2" x 30"  
Extraordinary - \$4800 (416)



This is one of the finest watch trade signs that has ever hit the market.  
It is made of sheet zinc and it retains a great original painted surface.

### Organ Grinder and Monkey

Novelty Blinking Eye Clock  
Made by Bradley & Hubbard  
Meriden, CT - 1890 - 17 1/2" Tall  
(Presently Not Working)  
Great Original Paint - \$9500 (417)



### Eagle Shooting Target

American - 1920's  
11" Wide x 14" Tall  
In use Surface - \$2250 (418)



### Pop Art Hamburgers Charger

Signed Anderson & Dated 1971  
American - 20" Diameter  
Mint - \$3200 (419)

With its graphic depiction of floating hamburgers, this wonderful ceramic charger appears to owe its inspiration source to the exaggerated color work of pop artist Wayne Thiebaud. Much like Andy Warhol, Thiebaud has made a lifetime career out of elevating commonplace objects into the exalted sphere of high art.





### Six Large Penguin Skittles

Lathe Carved with Separate Beaks  
Complete with 2 Original Bowling Balls  
American - Late 1920's - 12 1/2" Tall

Excellent - \$13,500 for set Or sold individually for \$2500 each. [\(420\)](#)

These whimsical penguin bowling pins represent the purest expression of Art Deco minimalism that we have ever seen. Essentially, they are bowling pin shaped with separately applied beaks. This form seems to be visually developed from the sleek architectonic cocktail shakers from the period.



### Rare Complete Set of Six Figural Tobacco Tins

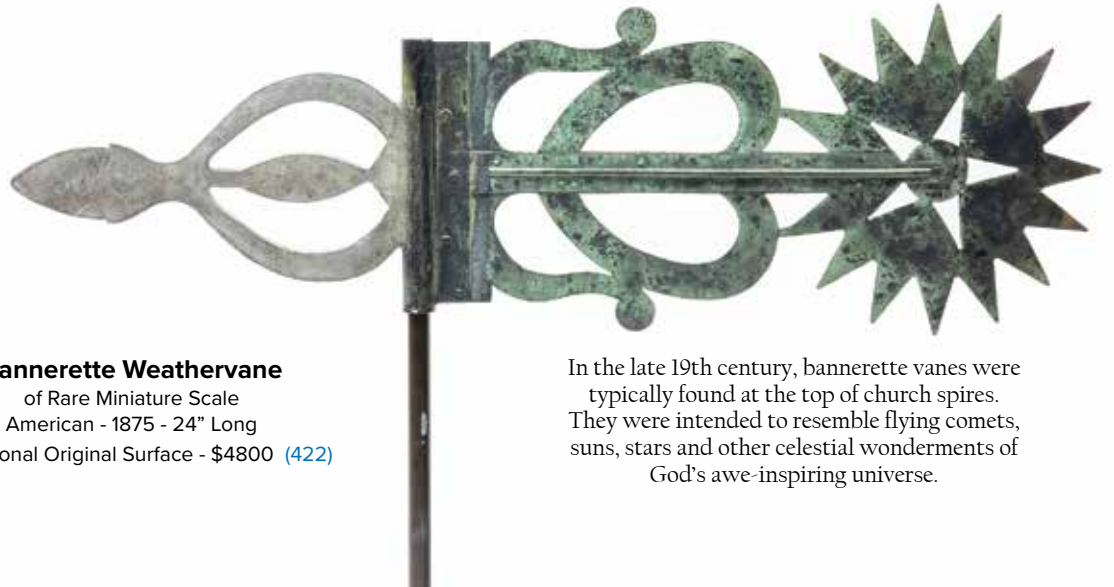
Virginia - Circa 1910 - 7" Tall

Excellent to Pristine

\$7500 for the Complete Set [\(421\)](#)

It is a very rare moment in time when a collector is offered a chance to acquire a complete set of six roly poly tobacco tins. Such a set comprises the following personages: Shopkeeper, Mammy, Dutchman, Opera Singer, Scotland Yard and the Satisfied Customer. Of course, there are some minor dings and scratches, but the overall look of this set is both consistent and superb.





**Bannerette Weathervane**  
of Rare Miniature Scale  
American - 1875 - 24" Long  
Exceptional Original Surface - \$4800 (422)

In the late 19th century, bannerette vanes were typically found at the top of church spires. They were intended to resemble flying comets, suns, stars and other celestial wonderments of God's awe-inspiring universe.



**Sailing Ship & Paddlewheel Steamboat Weathervane**

American - 1890 - 22" Long  
Terrific Polychrome Surface - \$2800 (423)

This unusual handmade vane appears to resolve the debate about nautical speed on the nation's waterways. In this telling of the competition, we clearly find the steam powered paddle-wheeler far in the lead of the wind powered clipper ship.



**Small Quill Weathervane**  
Probably Harris Company  
Boston - 1875 - 36" Long  
Several Layers of Re-Gilding - \$5500 (424)

Quill-shaped weather vanes were created for use on the cupolas of courthouses, government buildings and institutional centers of learning. This was designed to convey the impression that America was a nation of great philosophical and political thinkers who put their pen to paper.



## Weathervanes

### Strutting Gamecock Vane

Possibly by A. L. Jewell  
Waltham, MA - 1875 - 15"  
Great Weathered Surface - \$4850 [\(425\)](#)



### Crowing Rooster Vane

with Orb and Directional Arrow  
A. J. Harris Company  
Boston, MA - 1890 - 18"  
Excellent - \$4500 [\(426\)](#)



### Trotting Horse Weathervane

Unknown American Maker  
Circa 1890 - 24" Long  
Pristine - \$2450 [\(427\)](#)



Fashioned from a durable piece of sheet iron, it appears that this vane may be the skillful handiwork of a blacksmith.

## Running Dog Weathervane

Probably Cushing & White  
Waltham, MA - 1900 - 32" Long  
Gorgeous Original Surface - \$18,500 [\(428\)](#)



Among the animal-themed weathervanes, the Running Dog is perhaps the most charismatic and well modeled. The jagged serrated lines of the dog's tummy, legs and tail make for a dynamic silhouette. It is a very scarce form that rarely comes on the market.

## Automotive Weathervane

Unknown American Maker  
Circa 1910 - 30" Long  
Magnificent Original Patina - \$22,000 [\(429\)](#)



Depictions of automobiles as source material for weathervane production are extremely scarce. This exciting exception appears to be a "one-off" created by a talented metal-worker rather than an established weathervane manufacturer. Simple stark design gives this two dimensional beauty a minimalist elegance that mass produced vanes only rarely attain. For purists, the surface of this weathervane is unmatched.



## DesFontaines Figures



### **Napoleon Bonaparte**

Made by Josianne DesFontaines  
Paris France - Circa 1960 -  
Pristine Condition - \$9500 (430)

An exceptional execution of Jean Louis David's  
Grand Saint Bernard 1800. Signed on side of  
base Jdesfontaine.



### **General LaSalle 1775 - 1809**

Made by Josianne DesFontaines  
Paris France - Circa 1960  
Excellent Condition - \$7,500 (431)

Wonderful rendition of LaSalle smoking his pipe while at the gallop.  
Signed on base JDesFontaines.



### **Timbalier Bavaois**

Made by Josianne DesFontaines  
Paris France - Circa 1960  
Pristine Condition - \$7,500 (432)

A beautiful figure signed on base JDesFontaines.

### Officer de Grenadiers a Cheval

1st Empire Garde Grande Tenue

12" high, base 10" long

Made by M. Riffet

France Circa 1967

Excellent Condition - \$7500 (433)

A masterful figure signed on base.



### Officer de Grenadiers Porte Aigle

1st Empire

Made by Riffet France Circa 1967

11" to the top of the removable banner.

Excellent Condition - \$2100 (434)



### Hussar Officer

10" to top of plume.

Made by Riffet France Circa 1967

Excellent Condition - \$1700 (435)



### Artillery a Cheval Trumpeter de la Garde

9" to top of plume.

Made by Riffet France Circa 1967

Excellent Condition - \$2100 (436)



## Fouille Figures



**Artillery a Pied**  
1st Empire #142A 7 1/4" high  
Made by G. Fouille  
France - Circa 1960  
Pristine Condition - \$1,400 (437)



**Hussar 2nd Regiment Officer**  
1st Empire #204 8 1/4" high  
Made by G. Fouille  
France - Circa 1960  
Pristine Condition - \$1,500 (438)



**Murat Roi de Naples**  
1st Empire #241 10" high  
Made by G. Fouille  
France - Circa 1960  
Pristine Condition - \$2,600 (439)

With original box.



**Carabinier a Cheval 1810 - 1815**  
1st Empire #12621 9 1/2" high  
Made by G. Fouille  
France - Circa 1960  
Pristine Condition - \$2,100 (440)



### Dragoons

Made by CBG Mignot

90mm (Size 4 Grandeur) Dragoons from the Gerbeau period. Paris France Circa 1883

Pristine Condition - \$7000 (441)

Reference: Christian Blondeau's book, Petits Soldats, page 203.



### French Army

Made by CBG Mignot

90mm (Size 4 Grandeur) French Army 1916. Circa 1916.

Pristine Condition - \$12,500 (442)



This is the only known CBG Size 4 (3" tall), Grandeur boxed set in existence. This magnificent boxed set is in near mint condition and the figures are still originally tied into the box. Consisting of 25 French soldiers in khaki uniforms, including a mounted officer, flagbearer 2 buglers, 2 officers and 19 soldiers marching at slope.

The exact set is shown on page 132 of Christian Blondeau's 1993 book, Soldats de Plomb & Figurines Civiles Collection CBG Mignot



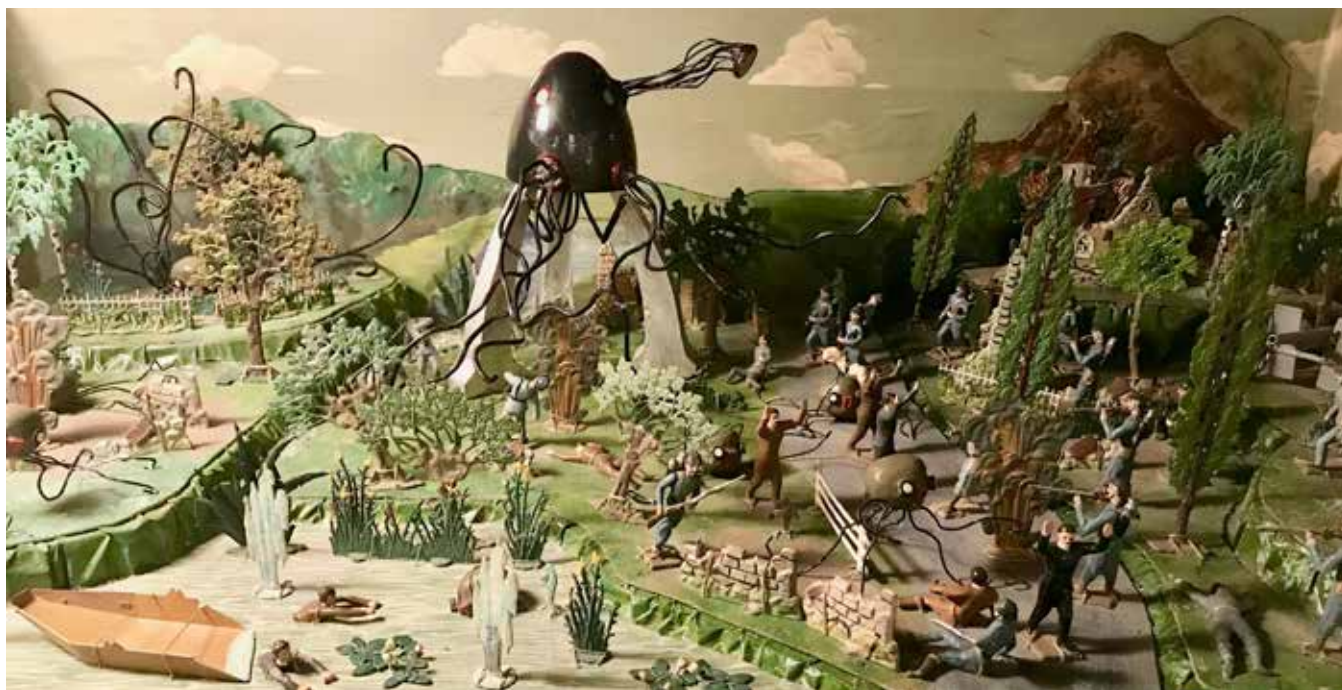
### French Gun Team

Made by CBG Mignot

Paris France Large Size 4 Figures Circa 1910

Very Good Condition - \$3400 (443)





Henri Mignot's Magnificent Creation:

The War of the Worlds Diorama

Made by CBG Mignot

Paris France Circa 1925

Excellent Condition - \$60,000 (444)







In 1925, Henri Mignot, produced a one-of-a-kind diorama, the War of the Worlds, based on H.G. Wells' 1898 eponymous novel. This imaginative set was created three years before Buck Rogers debuted in comic strip form in 1928.

In the diorama, Mignot crafted an imposing tripod complete with a heat ray, eight tentacled Martians, and hand painted all of the backdrops and buildings. He also used 30 Horizon Blue Soldiers, 15 civilians, and many other décor pieces from CBG Mignot stock to create this set. The diorama is housed in the company's largest, red diorama box measuring, 37" x 20" x 10". Everything in the set is in superb condition.

As an interesting historical note, in the early 1930's, H.G. Wells visited Paris, saw the diorama on display in Mignot's shop window and came into the store to congratulate him on his creation.







**Round-a-Bout**

Britains Set 1439  
London England Circa 1937  
Very Good Condition - \$6500 (445)

This rare Britains is the very important example from the Britains Archive Sale Lot 240.



**Mammoth Circus**

Britains Set 1539  
London England Circa 1950  
Near Mint Condition - \$1,850 (446)

The iconic set that resurrected Britains after World War II.

# **Mickey Mouse & Friends #1645**

Britains

London England Circa 1938

Pristine Condition, Box Excellent - \$28,500 (447)

This extremely rare set is one of the most iconic and sought after sets ever produced by Britains. One of only three known boxed examples, this one came by the descendant of a Britains Factory worker. Contains Clarabelle, Pluto, Mickey, Minnie, Donald and Goofy.



## **Pluto**

From Britains Set 1645

London England Circa 1938

Pristine Condition - \$1400 (448)



## **Goofy**

From Britains Set 1645

London England Circa 1938

Pristine Condition - \$2200 (449)



## **Mickey Mouse Soldier Set**

Made by Marx

Boston Massachusetts Circa 1936

Pristine Condition - \$1100 (450)

A beautiful example of this popular game.



## Toy Soldiers

### Cowboys and Indians

Made by Soljertoy  
New York, New York Circa 1928  
Rare 12 Pieces (one tomahawk missing).  
Excellent Condition - \$1400 [\(451\)](#)

Excellent and extremely rare figures from this short lived manufacturer. They were in business for barely over a year.



### North American Indians #35A

Made by Britains  
London, England Circa 1939 7 Pieces  
Very Good Condition, Box Excellent - \$275 [\(452\)](#)



### Indians Knockdown Set

Made by Feix  
Brooklyn New York Circa 1908 17 Pieces  
Excellent Condition, Box Very Good - \$1800 [\(453\)](#)



Very nice knockdown set in beautiful condition.

### Yellow Four Wheel Farm Lorry

Britains Set 59F  
London England Circa 1934  
Excellent Condition - \$2800 (454)



The brightly colored pre War examples of these Farm Lorries are very desirable.

### Civilian Motorcycle with Sidecar in Baby Blue

Britains Set 641  
London England Circa 1938  
Excellent Condition - \$3800 (455)



### Sir Kreamy Nut

Britains  
London England Circa 1938  
Pristine Condition - \$225 (456)



### Queen Elizabeth

Britains Madame Tussaud's T4  
London England Circa 1950  
Excellent Condition - \$200 (457)



### King Henry VII

Britains Madame Tussaud's T1  
London England Circa 1950  
Excellent Condition - \$200 (458)







**Racing Colours H.H.  
The Aga Khan**

Britains Racing Series  
London England Circa 1955  
Excellent Condition - \$200 (459)

**The Black Watch Half Set**

Britains No. 2126  
London England Circa 1959  
3 Pieces originally tied.  
Excellent Condition - \$325 (460)



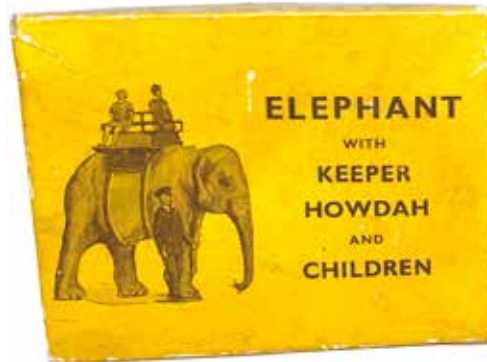
**Bluejackets B Series**

Britains No. 22B  
London England. Circa 1920  
7 Pieces.  
Excellent Condition - \$750 (461)



**Elephant Ride**

Britains No. 25Z  
London England Circa 1955 5 Pieces  
Excellent Condition - \$625 (462)



**Indian Elephant**

Britains No. 901  
London England Circa 1955  
Excellent Condition - \$150 (463)



**Miniature Greenhouse**

Britains No. 053  
London England Circa 1938  
Excellent Condition - \$775 (464)



### Painters and Ladder

Britains No. 1495  
London England Circa 1950 4 Pieces  
Pristine Condition - \$875 (465)



### R.A.M.C Hospital Staff

Britains No. 1910 London England Circa 1941 - \$16,500 (466)



Extremely rare steel helmeted set. This is the only known boxed example. 24 Pieces. Figures near mint and originally tied. Box Very Good with original end label. Provenance Frank Leo Collection. Protective leather bound box is included.



### Cameronians (Scottish Rifles) in Rare Gamages Box

Britains No. 1913  
London England Circa 1941 7 Pieces  
Marching at the Slope.  
Excellent Condition - \$4500 (467)



## Britains



### Royal Marines in Tropical Dress

Britains No. 1619  
London England Circa 1938 8 Pieces  
Excellent Condition - \$1800 [\(468\)](#)



### Royal Marine Light Infantry

Britains No. 1620  
London England Circa 1938 8 Pieces  
Excellent Condition - \$1100 [\(469\)](#)



### Infantry Officers

Britains No. 1908  
London England Circa 1940 7 Pieces  
Excellent Condition - \$2500 [\(470\)](#)

### South African Mounted Infantry with Moveable Arms

Britain No. 38  
London England Circa 1930 5 Pieces  
Pristine Condition - \$1000 [\(471\)](#)







**French Dragons**  
 Britains No. 140  
 London England Circa 1930  
 5 Pieces  
 Pristine Condition - \$850 (472)



**Skinner's Horse**  
 Britains No. 271  
 London England Circa 1930  
 5 Pieces  
 Excellent Condition - \$350 (473)



**Royal Canadian Mounted Police**  
 Britains No. 1349  
 London England Circa 1930  
 5 Pieces  
 Excellent Condition - \$300 (474)

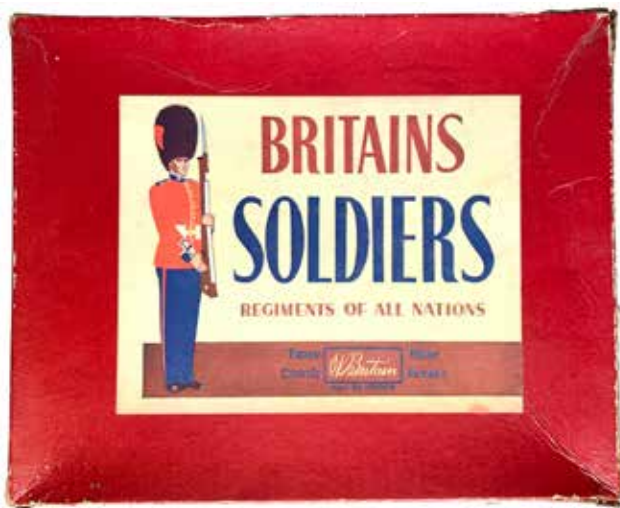


**Grenadier Guards**  
 Britains No. 1327  
 London England Circa 1955.  
 16 Pieces  
 Excellent Condition  
 originally tied - \$275 (475)



### Aviators in Short Coats

Britains No. 330 London England  
Circa 1936 8 Pieces.  
Excellent Condition - \$675 (476)



Very rare post war example of this desirable set.

### Rare Indian Mountain Battery

Britains No. 2019  
London England Circa 1946 11 Pieces  
Excellent Condition originally tied. Box Excellent. - \$5500 (477)



### Infantry Active Service

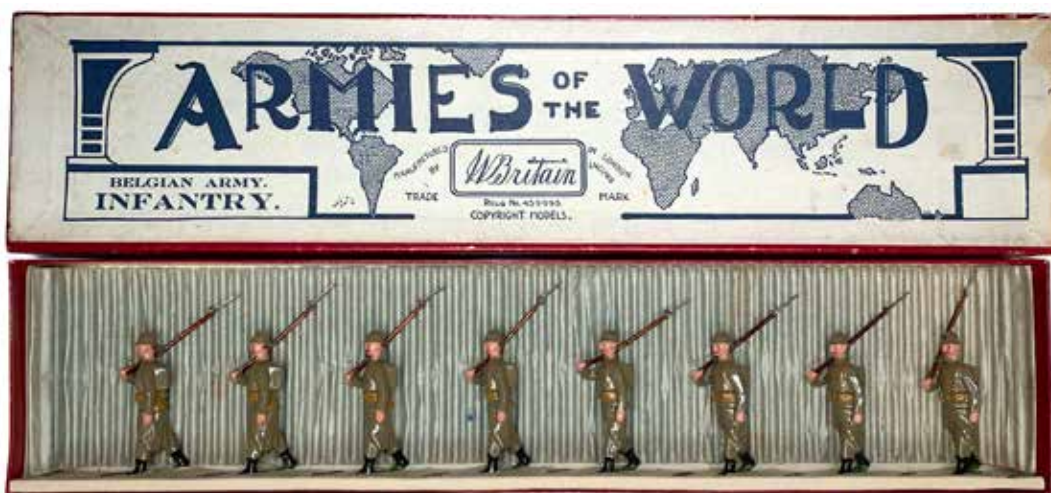
Britains No. 195  
London England Circa 1936  
8 Pieces  
Pristine Condition - \$550 (478)





### Belgian Infantry

Britains No. 1389  
London England Circa 1936  
8 Pieces  
Pristine Condition - \$450 (479)



### 5th Dragoon Guards

Very rare 1st Version with tin swords.  
London England Circa 1897  
5 Pieces  
Excellent Condition - \$3800 (480)

### Horse Guards

Made by Gebruder Heinrich  
50mm Germany Circa 1883 5 Pieces.  
Condition Excellent - \$7000 (481)

An extremely rare German set  
that forecasts the rise of Britains Ltd.  
in the west.





**Air Raid Warden's Post**

Very rare Britains No. 1858.  
London England Circa 1940  
Includes 2 Air Raid Wardens  
\$2500 (482)



**Extremely Rare Gun Shed, Gunners Quarters and Stairs**

Britains No. 1736, 1739 and 1740  
London England Circa 1940  
\$8500 (483)



Three of the rarest buildings Britains produces. This grouping contains the only known Flight of Stairs.

## German Toy Soldiers

### US Infantry with Music

Made by Scheller  
60mm Germany Circa 1880 20 Pieces  
Condition Near Mint - \$9500 (484)



Exceptionally early and beautiful large scale figures made by this early manufacturer. The condition is astonishing with the figures still originally tied into the box.



### US Infantry with Music

Made by Scheller  
60mm Germany Circa 1880 29 Pieces  
Condition Near Mint - \$15,500 (485)



An even larger example of the previous set in equal condition. Enough to make any collector's heart flutter.

### Prussian Infantry

Made by Gebruder  
Heinrich 80mm Germany Circa 1900  
Terrific full rounded figures.  
Large scale 80mm 18 Pieces  
Excellent Condition in nice early original wooden box - \$8000 (486)







**US 12th Regiment Marching**

Made by George Heyde

60mm Nuremberg Germany Circa 1900

Very large and impressive set. 47 Pieces

Condition Very Good, Box Very Good - \$8000 [\(487\)](#)



## Hussar Cavalry and Band

Made by George Heyde  
48mm Nuremberg Germany Circa 1928 36 Pieces.  
Condition Excellent - \$2300 (488)

Very unusual boxed set. It is believed that the German figures were boxed by a Danish retailer in a sturdy wooden box.



## Lancers

Made by George Heyde  
48mm Nuremberg Germany Circa 1924 24 Pieces  
Condition Excellent - \$2000 (489)



Very unusual boxed set. It is believed that the German figures were boxed by a Danish retailer.



## French Zouaves and Regimental Band

Made by George Heyde  
48mm Nuremberg Germany Circa 1934 72 Pieces  
Condition Excellent - \$3000 (490)

Very unusual boxed set. It is believed that the German figures were boxed by a Danish retailer.





## German Toy Soldiers

### Royal Horse Pontoon Section

Made by George Heyde

48mm Nuremberg Germany Circa 1920 28 Pieces.

Excellent Condition, Box Excellent - \$2450 [\(491\)](#)



### US Encampment with Cavalry

Made by George Heyde

48mm Nuremberg Germany Circa 1920 75 Pieces

Condition Excellent - \$12,500 [\(492\)](#)

### Royal Horse Artillery

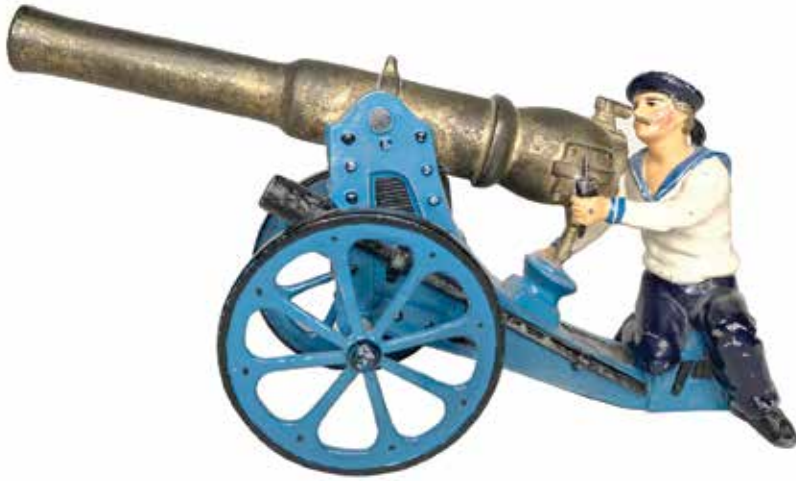
Made by George Heyde

60mm Nuremberg Germany Circa 1920 15 Pieces

Near Mint example of this large scale boxed set.

\$4000 [\(493\)](#)





## Monumental Naval Gunner

Made by George Heyde  
110mm Nuremberg Germany Circa 1912  
Pristine Condition. One of the most fantastic  
figures I have seen - \$3800 [\(494\)](#)

**The Kaiser's Fleet**  
Made by George Heyde  
Nuremberg Germany Circa 1912  
Excellent Condition - \$9500 [\(495\)](#)

An exceptional example of  
Heyde's skilled craftsmanship.



## Sailors in Action

Made by George Heyde  
Nuremberg Germany - Circa 1920 - 20 Pieces  
Excellent Condition - \$2400 [\(496\)](#)

**Naval Flotilla**  
Made by Spenkuch Demi-Rounds  
Germany Circa 1911 31 Pieces  
Excellent Condition, Box Very Good - \$3200 [\(497\)](#)





## German Toy Soldiers

### Landsknecht Knights with Medieval Castle

Made by George Heyde

48mm Nuremberg Germany Circa 1910 21 Pieces.

Castle measures 16" X 8" X 9" high.

Very Good Condition - \$12,500 (498)

Includes exceedingly rare hand painted tinplate, three turreted Medieval Castle.



### The Siege

Made by George Heyde

48mm Nuremberg Germany Circa 1910 60 Pieces.

Excellent Condition - \$22,500 (499)

Includes one of the rarest and most desired items Heyde ever produced - the feared Catapult. Fantastic set.

**Egyptians and Nubian Battle**

Made by George Heyde  
48mm Nuremberg Germany Circa 1920  
36 Pieces  
Condition Excellent - \$12,000 [\(500\)](#)



**Streets of Hong Kong with Emperor**

Made by George Heyde  
48mm Nuremberg Germany Circa 1910 49 Pieces  
Condition Very Good - \$26,500 [\(501\)](#)



A wonderful rendition of the Boxer Rebellion including Empress Dowager Cixi.



## German Toy Soldiers



### French Foreign Legion and Attacking Arabs

Made by George Heyde

48mm. Nuremberg Germany Circa 1910 60 Pieces.

Condition Excellent - \$5200 [\(502\)](#)



### Mounted Arabs

Made by George Heyde

60mm Nuremberg Germany Circa 1910 6 Pieces

Condition Excellent - \$2400 [\(503\)](#)



### Monumental Mounted Arab with Rifle

Made by George Heyde

80mm Nuremberg Germany Circa 1912

Very Good Condition - \$1550 [\(504\)](#)

## German Toy Soldiers



### German Jaeger

Made by George Heyde  
48mm Nuremberg Germany Circa 1920 23 Pieces.  
Pristine Condition, Box Excellent - \$850 (505)



### Prussian Infantry and Cavalry

Made by Spenkuch 48mm Germany Circa 1910 26 Pieces.  
Excellent Condition, Box Excellent - \$1,450 (506)



### Color Company Dismounted

Made by George Heyde Set No. 992 48mm  
Nuremberg Germany Circa 1912 55 Pieces.  
Condition Excellent, Box Good - \$3800 (507)

Wonderful large display.



### Austro-Hungarian Prussian Battle

Made by George Heyde  
48mm Nuremberg Germany Circa 1920 10 Pieces  
Excellent Condition - \$1450 (508)

Includes the wonderful figure of a Cavalryman shot and falling from his steed. Most likely are representation of the Battle of Königgrätz 1866.



# German Toy Soldiers

## League of Nations

Made by Heyde

Nuremberg Germany Circa 1920. 134 Pieces.

\$25,500 (509)



The League of Nations was a precursor to the United Nations established after World War One with the mission to maintain the peace. This set was most likely manufactured as a window display. The horses are attached in squadrons of five per tin base. A truly impressive display.





## Elephant Hunt

Made by Heyde  
Nuremberg Germany Circa 1910  
\$9500 (510)



This most iconic of all the hunt sets includes two fantastic vignettes.

## Observation Set

Made by Heyde  
Nuremberg Germany Circa 1912 54 pieces  
Excellent Condition - \$29,500 (511)

What an incredible set containing not only a zeppelin but the extremely rare observation balloon with wagon. One of Heyde's finest sets with it's original box. This particular example was first sold at the famous Charles Morell in London, England.





## German Toy Soldiers



### Bullfighters

Made by Spenkuch

Demi-rounds, Germany Circa 1910. 33 Pieces

Excellent Condition with Exquisite box label - \$3800 (512)



### Battle of Morat 1476

Made by George Spenkuch

Germany Circa 1900 54 Pieces

Pristine Condition - \$3800 (513)

### Franco Prussian

Made by Haffner Demi-Rounds

Nuremberg Germany Circa 1908 50 Pieces

\$3200 (514)





## Monumental Jockey

Made by George Heyde  
80mm Nuremberg Germany Circa 1925  
Excellent Condition - \$450 (515)



## Vikings

Made by George Heyde  
48mm Nuremberg Germany  
Circa 1912 - 18 Pieces  
\$2100 (516)



## Huntsman with Dogs

Made by George Heyde  
80mm Nuremberg Germany Circa 1925  
Excellent Condition - \$200 (517)

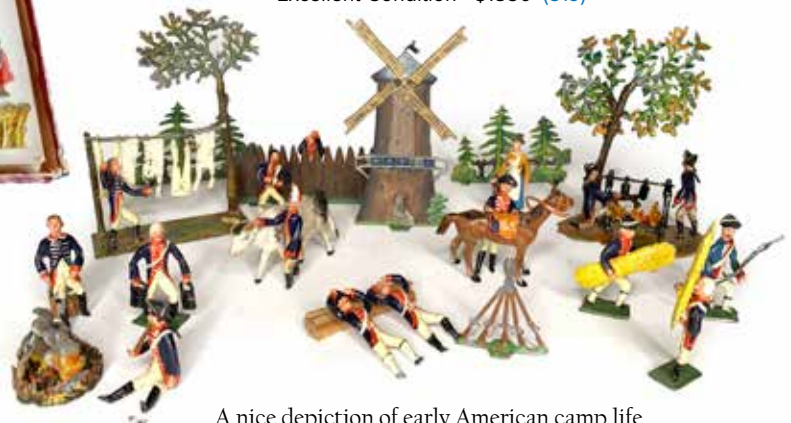


## The Farm

Made by Spenkuch Germany - Circa 1912 - 60 Pieces  
Excellent Condition \$3200 (518)

## Revolutionary War Encampment

Made by George Heyde Nuremberg Germany - Circa 1920 17 Pieces  
Excellent Condition - \$1850 (519)



A nice depiction of early American camp life.



## German Toy Soldiers



### Hessians

Made by George Heyde  
70mm Nuremberg Germany  
Circa 1920 12 Pieces  
Excellent Condition - \$3200 (520)



### Monumental Lancer

Made by George Heyde  
110mm Nuremberg Germany Circa 1910  
Very Good Condition - \$3200 (521)

Lance is detachable.



### Monumental Hindenburg Figure

Made by NORIS  
120mm Germany Circa 1915  
Excellent Condition  
with original box - \$2850 (522)

### Prussian Lancers "Rohrenottos"

Made by Haffner  
Germany Circa 1890 6 pieces 5 1/2" High  
Excellent Condition, Box Good - \$9500 (523)

The ultimate German figure. These highly desirable figures are constructed by casting the front and rear ends of the figures along with the mounted lancer as demi-rounds. The three pieces are then attached to a tin cylinder giving the figure a visually dynamic and realistic look. Notice every horse is different. Our favorite figures.







### Spanish Army and Navy Supply Column

Made by Capell

Barcelona Spain - Circa 1920 230 Pieces

\$15,500 [\(524\)](#)

An exceedingly rare and monumental display from Spain's most revered manufacturer. Known for their 45mm figures they also produced these 50mm solid cast figures with plug heads. An impressive set.





## American Toys

**The “HARRY” Sled**  
with Exuberant Decoration  
American - 1876 - 12”  
Pristine - \$7500 ([525](#))



An inscription on the reverse reads, “This sled was made for Harry (me) by my father in 1876 and painted by Charles Mountfort, a neighbor”.



**American Tin Omnibus**  
Francis, Field & Francis  
Philadelphia - 1850  
Largely Restored - \$38,500 ([526](#))



Francis, Field & Francis was in business on Philadelphia's South Street as early as 1830. They were primarily known for their small line of tole ware kitchen products, but they added tin toy production to their creative commercial output shortly thereafter. These early toys are prized not only by toy collectors but also by folk art collectors. Vivid hues and hand-painted details, including pinstripe flourishes and flowers, are some of the trademark features of their painting style. This particular omnibus toy recently emerged from the attic of a house in Pennsylvania. It was discovered in a poor state of preservation and therefore needed to be conserved. Very, very, very few toys by Francis, Field and Francis have ever come to light.

