



CYBER TOY AUCTIONS TOYS & BANKS



SEPTEMBER 10, 2016 - 10:00 AM



Saturday, September 10, 2016

**Cyber Toy Auctions
Toys & Banks**

10:00 AM EST

CATALOG 1

**"Your modern day flea market for old and new toys.
A virtual toy show assembled from prestigious
collections across the world!"**



P: 412-343-8733



F: 412-344-5273



E: cybertoyauctions@gmail.com



A: PO BOX 13323
Pittsburgh, PA 15243



www.cybertoyauctions.com



www.facebook.com/cybertoyauctions



www.twitter.com/cybertoyauction



[@cybertoyauctions](https://www.instagram.com/cybertoyauctions)

JULIAN ABERNETHY | BREANNE DAY | RAY HARADIN | LEON WEISS | STEVEN WEISS

How to Bid



Register

- Log in or create an account on LiveAuctioneers.com
- Register for our sale a couple days prior!!



Bid

- Place your bids before or during the live sale on LiveAuctioneers.com via computer, phone or tablet.
- We also accept absentee bids via email, phone, fax, or snail mail.



Pay

- You will receive your invoice within 7 days.
- We accept PayPal, MC, Visa, Amex, Discover, money order or check.



Ship

- Your items will be delivered via USPS Mail to your front door.
- US Shipping is \$12 per lot.
- Additional fees will apply for overseas.

"Gary guarantees the items are as described. If an error was made you will be refunded fully."



Bidding Increment Chart

Through Liveauctioneers.com the bidding increments are set as follows:

\$5-\$50
increase
\$5 per bid

\$50-\$200
increase
\$10 per bid

\$200-\$500
increase
\$25 per bid

\$500-\$1000
increase
\$50 per bid

\$1000-\$5000
increase \$100
per bid

\$5000-\$10,000
increase \$500
per bid

\$10,000+
increase
\$1000
per bid



1 Three Dog Banks Three German Dog Banks, circa 1920. They are all made of a combination of lead and tin. They range from 2" to 4.5" tall. All three in fine condition. Dog on top of ball has a dent on the backside of ball. Dog next to ball has had its clasp reattached. Estimate: \$125-\$200



2 Three Silver Lead Banks Three German Silver Lead Banks, circa 1920. They range from 4.75" to 7.5" long. All three in excellent condition. Estimate: \$125-\$150



3 Two Silver Lead Banks Two Silver Lead Banks, Japan / Germany, circa 1920. They range from 3" to 4" tall. Both in excellent condition. Pigs in Satchel has a 2.5" crack around the bottom circumference of the bank. Fish has a crack that starts from the corner of the mouth (around 1.5" long) and one down the middle of the mouth (around 1" long). It has been crudely repaired. Estimate: \$40-\$60



4 Daikoku (God of Wealth) Daikoku (God of Wealth), Japan, Pre WWII. Made of lead. He is 4.5" tall. He is in fine condition. He has a 2" crack behind his hat. Estimate: \$25-\$50



5 Jackie Coogan by Chest Jackie Coogan by Chest, Germany, circa 1920. Made of lead. He is 3.25" tall x 3.5" wide. The bank is in good condition. Estimate: \$100-\$150



6 Two Lead Banks Boy with Feather in Cap on Wood Pile and Printer with Roll, Germany, circa 1920. Both made of lead. Boy with Cap is 6" tall and Printer with Roll is 5.5" tall. Boy with Cap is in excellent condition. Printer with Roll is in fine condition. Estimate: \$250-\$350



7 Old Beggar Man Old Beggar Man, Germany, circa 1890. Made of white metal. He is 7.5" tall. The bank is in very fine condition. This is a rare bank. Estimate: \$75-\$125



8 Fireman on Base Fireman on Base, England, circa 1890. Made of sheet metal and tin. He is 7.75" tall. Overall in excellent condition. The nozzle of the hose is broken off and missing. This is a rare bank. Estimate: \$75-\$125



9 Two Still Banks Man Carrying Basket and Madonna of the Trail. Man with Basket is German, circa 1920. Madonna of the Trail is American, circa 1920. Man with Basket is in excellent condition and is 7.75" Tall. Madonna of the Trail is in fine condition and is 8.5" tall. Madonna of the Trail was not originally a bank; someone has cut a coin slot in the backside of the pedestal on which she is standing. Estimate: \$100-\$150



10 Three Souvenir Banks Three Souvenir Banks, Germany, circa 1920. All made of lead. They range from 3.25" to 4" long. All three in very fine condition. Estimate: \$100-\$150



11 Nurnberg Souvenir Bank Nurnberg Souvenir Bank, Germany, circa 1920. Made of lead. The bank is 2.5" tall x 3.5" wide. Very fine condition. Estimate: \$75-\$125



12 Three Souvenir Banks Three Souvenir Banks, Germany, circa 1920. All made of lead. They range from 3.25" to 4.75" tall. They range from very fine to excellent condition. (5" hole in one bank.) Estimate: \$100-\$150



13 Coln Cathedral Souvenir Bank Coln Cathedral Souvenir Bank, Germany, circa 1920. Made of lead. The bank is 4" tall x 3.75" long. The bank is in poor condition. There is a crack that starts between the towers and runs down both sides to the base. It is also missing the locking mechanism. Estimate: \$25-\$50



14 Man with Flour Sack Man with Flour Sack, Germany, circa 1920. Made of lead. The bank is 6.5" tall. He is an old repaint. His locking hasp and clasp are both missing. Estimate: \$175-\$225



15 Dog on Top of Tree Trunk, Inkwell Dog on Top of Tree Trunk, Germany, circa 1900. Made of lead. The inkwell is 2.75" tall. The inkwell is in excellent condition. Retains glass ink holder. Estimate: \$100-\$150



16 Black Clown Bust Bank Black Clown Bust, Germany, circa 1900. The Clown is made of lead, the base is made of tin. The clown is 3.5" tall. The bank is in fair condition, it is missing the trap. Estimate: \$100-\$150



17 Two Tin Banks Flower Basket and Infantry Helmet With Medallion made in Germany, circa 1930. Both are made of tin. The basket is 3" long, the helmet is 3.5" long. Both banks are in very fine condition. Estimate: \$50-\$100



18 Two Tin Banks "Wanamaker" Bank is made by Stollwerck, Germany, circa 1910 and is 3.25" long. Punch and Judy Bank, Germany, circa 1900 and is 2.75" tall. Both banks are in very fine condition. Estimate: \$200-\$300



19 Two Tin Banks Stollwerck Church with One Steeple, Germany, circa 1910 and is 3.25" tall. Stollwerck Church with Two Steeples, Germany, circa 1910 and is 3.25" tall. Both banks are in fine condition. Church with One Steeple's base is upside down. Church with Two Steeples has one replaced steeple. Estimate: \$80-\$120



20 Two Tin Banks Gingerbread House, Germany, circa 1930 and is 3" tall x 4.25" long. Tin Church, Germany, circa 1930 and is 6" tall x 3.25" long. The Gingerbread House is in very fine condition. The Tin Church is in fine condition. Estimate: \$150-\$200



21 Thermo X Gas Fireplace Bank Thermo X Gas Fireplace, made by Burnett Ltd. England and is 4.5" tall x 4.5" wide. The bank is made of tin and in very fine condition. Some denting to the backside. Estimate: \$50-\$100



22 Two Tankard Banks Sterling Silver Tankard, probably English, circa 1870 and is 3.25" tall. Silver Plate Over Brass Tankard, Continental, circa 1890 and is 3.75" tall. Both in very fine condition. The Sterling Silver Tankard's clasp is broken in half, the half broken off is missing. The Silver Over Brass Tankard is missing part of the locking mechanism. Estimate: \$150-\$200



23 Three Urn Banks Three Urns, Silver-plated, European, circa 1920. They range from 4" to 4.5" tall. Estimate: \$100-\$150



24 Three Still Banks Two Silver Plated Mugs and a Cupid Under Mushroom, German, circa 1930's. They range from 3.25" to 4.5" tall. Estimate: \$150-\$250



25 Two Brass Urns Two Brass Urns, German, circa 1920's. They range from 5.5" to 6" tall. Estimate: \$50-\$100



26 Two Shoe Banks Souvenir Shoe, Germany, circa 1920. Lead with tin base/trap and is 4.5" long. Shoe With Bow, Germany, circa 1900. White metal with tin top plate and is 5.5" long. Souvenir Shoe is in fine condition. Shoe With Bow is in excellent condition. Estimate: \$80-\$120



27 North Enskilda Bank North Enskilda Bank, Swedish, circa 1900's. The bank is made of brass and is 6.25" tall. The bank is in excellent condition. Estimate: \$100-\$150



28 Santa Bank Santa Bank, unknown, circa 1930. The bank is made of brass and is 6.5" tall. The bank is in excellent condition. Estimate: \$125-\$175



29 Oddfellow Bank Oddfellow Bank, Danish, circa 1900's. The bank is made of brass and is 4.5" tall. The bank is in excellent condition. Estimate: \$50-\$100



30 Two Souvenir Banks Bankers Life Company / The Eastern National Bank, American, circa 1940's. They are 3.25" to 4" tall and are made of white metal. Fine to Excellent Condition. Estimate: \$50-\$100



31 English Cupola English Cupola, Chamberlain & Hill, England, circa 1900's. The bank is made of cast iron and is 6.25" tall. The bank is in very fine condition. Estimate: \$125-\$175



32 Two Brass Banks Two Brass Banks, unknown manufacturer, circa 1900/1970. The banks are both made of brass and are 4.5" and 5.5" tall. Both banks are in very fine condition. Estimate: \$50-\$100



33 "Caisse" Bank "Caisse" Bank, French, circa 1900's. The bank is made of white etal and is 6.25" tall. The bank is in very fine condition. One pedestal leg is broken off, but present. Estimate: \$75-\$100



34 "Banque" with Rooster Finial "Banque" with Rooster Finial, French, circa 1900's. The bank is made of brass and is 5.75" tall. The bank is in very fine condition. Estimate: \$100-\$150



35 Swedish Banking Bank Swedish Bank, circa 1900's. The bank is made of brass and is 4.5" tall. The bank is in excellent condition. Estimate: \$50-\$100



36 German Elementary School German Elementary School, circa 1890. The bank is made of lead. The bank is in poor condition. Estimate: \$150-\$200



37 Independence Hall Bank Independence Hall, United States, circa 1930. This bank is made of aluminum and is 5.25" tall. The bank is in near mint condition. Estimate: \$50-\$100



38 Tin House Bank Tin House Bank, United States. The bank is made of tin with a paper overlay and is 5.75" tall. The bank is in fine condition, one screw missing underneath. Estimate: \$75-\$100



39 Two Mosque Banks Mosque Two Story and Mosque Three Story, A. C. Williams of Ohio, circa 1900's. Mosque Two Story is 2.875" tall and Mosque Three Story is 3.5" tall. Both are made of cast iron. Both banks are in fine condition. Estimate: \$75-\$125



40 Three Building Banks Included are a Domed Bank Large, Domed Bank Small and a Skyscraper Small. All were made by A. C. Williams of Ohio, circa 1900's. They range from 3" to 4.75" tall and are all made of cast iron. All three banks are in fine condition. Estimate: \$100-\$150



41 Crown Bank, Small Crown Bank, Small was made by J. & E. Stevens of Connecticut, circa 1890. The bank is 3" tall and made of cast iron. The bank is in good condition. Estimate: \$125-\$175



42 State Bank State Bank was made by Kenton of Ohio, circa 1900. The bank is 5.75" tall and made of cast iron. The bank is in good condition. Estimate: \$100-\$150



43 Dordrecht Bank Dordrecht Bank was made in Holland, circa 1800's. The bank is 7.125" tall and made of cast iron. The bank is in fine condition. Estimate: \$200-\$300



44 Two Building Banks One, a Fort Dearborn Bank, American, circa 1930's. The other a Capitol Street, circa 1930. Fort Dearborn is 4.5" tall x 4.25" wide, Capitol Street is 2.75" tall x 4.25" wide. Both are made of white metal. Both banks are in very fine condition. Estimate: \$40-\$80



45 Two Building Banks One, a Columbia Tower, made by Grey Iron Casting of Pennsylvania, circa 1890's. The other is a Reid Library-Lake Forest College, American, circa 1930. The Tower is 6" tall, Reid Library is 3.5" tall and both are made of cast iron. Both are in poor condition. The Columbia Tower is missing the spire at the top of the bank. Estimate: \$200-\$300



46 Two Tin Houses Two Tin Houses, American, circa 1930's. They are 4" and 5.25" respectively. Both are in excellent condition. Estimate: \$80-\$120



47 Two Tin Buildings One, a National Bank, American, circa 1890's. One, a Cottage, American, circa 1900's. They are 3" and 4" respectively. National Bank in fine condition. Cottage in excellent condition. Estimate: \$50-\$100



48 Nurnberg Cottage Biscuit Box Nurnberg Cottage Biscuit Box, Germany, circa 1920's. The Biscuit Box is 5.75" tall x 6.5" wide and made of tin. The Biscuit Box is in pristine condition. Estimate: \$75-\$125



49 Two Alms Boxes St. Olav Bus Alms Box, Norway, circa 1920. Missions des Peres Capucins, Unknown, circa 1920. Both Alms Boxes are made of tin. They are 5" and 6" respectively. Both Alms Boxes are in very fine condition. Estimate: \$60-\$80



50 Three Tin Building Banks Three Tin Building Banks, various manufacturers, circa 1920. They range from 2.5 to 3.25" tall. All are in very fine condition. Estimate: \$40-\$60



51 Two Kasse Banks Two tin Kasse banks, German, circa 1890's. Both are about 6.5" tall. They are both in fine condition. Estimate: \$60-\$80



52 "Caisse" Bank "Caisse" Bank, French, circa 1920's. The "caisse" bank is 8.75" tall and made of white metal. The bank is an old repaint. Estimate: \$80-\$120



53 Cottage Bank Cottage Bank, unknown manufacturer, circa 1930's. The bank is 5.25" tall x 5.75" wide and made of sheet steel. The bank is in excellent condition. Estimate: \$125-\$175



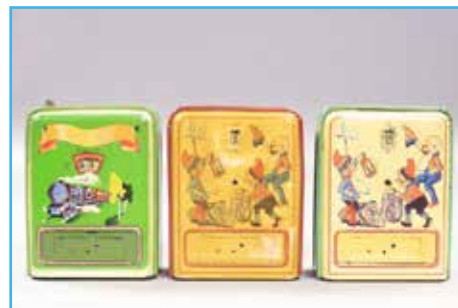
54 Three Tin Building Banks Three Tin Building Banks, unknown manufacturer, circa 1950's/60's. They range in size from 3.25" to 5.25" tall. All three banks are in excellent condition. Estimate: \$50-\$100



55 Two Tin Building Banks Two Tin Building Banks, one is a cottage, the other, a windmill, unknown manufacturer, circa 1940's. The Cottage is 4" wide and the Windmill is 4.5" tall. Both banks are in excellent condition. Estimate: \$80-\$120



56 Two Tin Building Banks Two Tin Building Banks, one is German which reads "The Answers", one is French which reads "Champion-Lebel Kremlin Bicetre", circa 1920's. One 3" tall the other 7" long. Both banks are in fine condition. "The Answers" is missing one tin tab on roof. Estimate: \$80-\$120



57 Three Registering Banks Three Registering Banks, two are German, one is French, circa 1935. All three banks are 5" tall and made of tin. All three banks are in pristine condition. Estimate: \$75-\$125



58 Three Registering Banks Three Registering Banks, one is German, one is Swedish, and one is American, circa 1935. All three banks are 5" tall and made of tin. Banks range from fine to very fine condition. Estimate: \$75-\$125



59 Three Registering Banks Three Registering Banks, Germany, circa 1935. They range in size from 4.25" to 5.25" tall and they are made of tin. They range from very fine to pristine condition. Estimate: \$75-\$125



60 Two Still Banks TV / Your Dream Banks are 4.75" tall each. American, circa 1950's. Excellent Condition. Estimate: \$75-\$125



61 Three Registering Banks Three Registering Banks, one is English, two are German, circa 1935. All three banks are around 4.75" tall and all are made of tin. All three banks are in very fine condition. Estimate: \$50-\$100



62 Two TV Banks Two TV Banks, American, circa 1940's. They are both 4.75" tall and made of tin. Both banks are in very fine condition. One TV bank is missing base plate. Estimate: \$75-\$125



63 Two Tin Banks Two Tin Banks, one is German U. S. Zone, one is unknown, circa 1940's. Both banks are 5" long and made of tin. Both banks are in very fine condition. Hippo Bank not presently working. Estimate: \$50-\$100



64 Three Registering Banks Three Registering Banks, German/French/Unknown, circa 1940's. They range from 4.25 to 5.5" tall and are all made of tin. All three banks are in very fine condition. Estimate: \$50-\$100



65 Two TV Banks Two T. V. Banks, American, circa 1940's. They are both 4.75" tall and made of tin. Both banks are in very fine condition. Estimate: \$75-\$125



66 Two Registering Banks Two Registering Banks, German/French, circa 1935. One is 5" tall, the other is 5.25" tall and both are made of tin. Both banks are in very fine condition. Estimate: \$100-\$150



67 Two Rectangular Savo Banks Two Savo Banks, Philadelphia, circa 1930's. Both are 2.5" tall x 3" wide and made of tin. Both banks are in fine condition. Estimate: \$75-\$125



68 Three Still Banks Two Spheres on Pedestal Feet and One Mirrored Dresser, unknown manufacturer, circa 1920's. Red Sphere is made of tin. Brass Colored Sphere is made of brass, Mirrored Dresser is made of sheet metal (glass mirror). The Spheres are 3" tall, the Dresser is 4" tall. The Brass Sphere and Dresser are in very fine condition. The Red Sphere is in fair condition. The Red sphere is missing the coin slot protector and its hinge is broken. Estimate: \$100-\$150



69 Three Safe Banks Included are a Daisy Safe, Security Safe Deposit and Safe. American, circa 1900's. They range from 3.25" to 4" tall and are all made of cast iron. They range from fine to very fine condition. The Security Safe Deposit has a broken lock, some pieces are present. Estimate: \$75-\$125



70 Japanese Safe Japanese Safe, American, circa 1900's. The safe is 5.5" tall x 4.5" wide and made of cast iron. The bank is in poor condition. The safe has been broken near the key hole. One piece has been glued back in place, the other piece is missing. Estimate: \$40-\$60



71 Safe with Green Door Safe with Green Door, American, circa 1900's. The safe is 4.25" tall and 3" wide and made of cast iron. The bank is in good condition. The top plate has been broken in half. Two strips of sheet metal have been screwed to the left and right side to hold the piece together. Estimate: \$60-\$80



72 Two Registering Banks One is a "Phoenix" Dime Register Trunk the other is a Savings Chest, both American, circa 1890's. They are 3.75" and 4.5" tall respectively and both made of cast iron. They are both in good condition. "Phoenix" Dime Register Trunk is not presently working. Estimate: \$125-\$175



73 Four Still Banks Included are: two Drums, one Sheriff Hat and one Fez. America/Japan, circa 1900 - 1940s. Drums are 3" tall, Fez is 3.25" tall and Sheriff Hat is 6.5" wide. The two Drums and Sheriff Hat are made of tin. The Fez is made of steel. The one Drum, Fez and Sheriff Hat are in fine condition. The Lincoln and Washington Drum is in poor condition. Estimate: \$80-\$120



74 Three Assorted Tin Banks American / European, circa 1920's. They are 4" to 6" tall and made of tin. They are all in fine condition. Estimate: \$100-\$150



75 Four Tin Still Banks Included are: a Blue Refrigerator, a Radio, a Camp Bank and a Tiny Building. American, circa 1920 - 1940. They range from 2.25" to 3.75" tall and all are made of tin. All banks are in fine condition. Estimate: \$75-\$125



76 Two Clock Banks Two Clock Banks, American / Scottish, circa 1890's/1920's. One is wooden and 4.5" tall, the other is tin and 5.25" tall. Both in fine condition. Tin Clock has a missing clock hand and looks as if something was ripped off of the top. Estimate: \$100-\$150



77 Five Clock Banks Five Clock Banks, American circa 1995 - 1940. The clocks range from 2.25" to 2.75" tall and are all made out of tin. The clocks range from poor to fine condition. Estimate: \$75-\$125



78 Three Still Banks Included are: a Bookcase, a Globe and The Child's Bank. American and English circa 1910 - 1930. The Bookcase is 3.25" tall and made of wood. The Globe is 4.5" tall and made of tin. The Child's Bank is 4" tall and made of tin. All three banks are in good condition. Estimate: \$75-\$125



79 Two Still Banks One is a Majestic Ice Box made by Arcade, circa 1930's and the other is a "Radio Bank" made by Hubley, circa 1920's. They are 3.25" and 4.5" respectively and both are made of cast iron. The Radio Bank is in fine condition while the Majestic Ice Box is in fair condition. Estimate: \$125-\$175



80 Three Refrigerator Still Banks Included are: two GE Refrigerators (Small) and one GE Refrigerator (Large). They were made by Hubley of Pennsylvania, circa 1930's. The small refrigerators are 3.5" tall and the large refrigerator is 4" tall. All three are made of cast iron. The large refrigerator and small green refrigerator are in good condition. The small white refrigerator is completely repainted. Estimate: \$125-\$175



81 Three Kitchen Themed Still Banks Included are: one Electrolux Refrigerator, American, 4" tall and made of white metal; one Magic Chef Oven, American, 3.5" tall and made of white metal; one Revo Electric Cooker Stove, American, 5.5" tall and made of tin. All three banks are in good condition. Estimate: \$75-\$100



82 Three Tin Still Banks Included are: a Windmill, a Humpty Dumpty Bank and a Santa Claus climbing a ladder. They range in size from 5" to 7" tall and are all made of tin. Windmill is in very fine condition. Humpty Dumpty and Santa Claus are in good condition. Estimate: \$80-\$120



83 Five Tin Cylinder Banks Included are: Five Cylinder Banks. They range in size from 4" to 6" tall. They are in good to very fine condition. Estimate: \$100-\$150



84 Three Tin Banks Included are Three Tin Banks. They range from 5" to 6.5" long. They are all in very fine condition. Estimate: \$75-\$100



85 Three Vending Banks Included are Three Vending Banks. They range from 5" to 6" tall. They are in fine to very fine condition. The top right corner of the green bank is broken out and missing. Estimate: \$150-\$225



86 Three Tin Banks Included are: Three Tin Banks. They are all 5" long. All three are in fine condition. Estimate: \$75-\$100



87 Two Still Banks Included is a Prudential Rock, American, circa 1930's. Prudential Rock is 4" long. Also included is a Globe with Cherub Finial, unknown maker, circa 1930's. The Globe is 7.5" tall. The Globe is paper over metal with a wooden base. Both banks are in excellent condition. Estimate: \$50-\$75



88 Singer Sewing Machine Singer Sewing Machine, Germany, circa 1925. The Sewing Machine stands 5.125" tall and is made of tin and iron. The bank is in very fine condition. Estimate: \$175-\$225



89 Three Vehicle Themed Banks Included are: Armored Car Savings Bank, World Lines Transport Bus and Cragston Savings Bank. The Armored Car Savings Bank is 9.25", made of tin and in excellent condition with original box. The World Lines Transport Bus (battery operated) is 11" long, Made in Japan, made of tin and in very fine condition. The Cragston Savings Bank is 10" long, made of tin and in very fine condition. (bell works well!) Estimate: \$200-\$300



90 Jolly Joe the Clown Jolly Joe the Clown was manufactured by Saalheimer & Strauss of Germany, circa 1925. The bank is made of tin and is 6.75" tall. The bank is in fair condition. Some fading and denting. Estimate: \$300-\$400



91 Gwenda Money Box A very rare bank, no battery housing and replaced eyes. The bank is 4" tall, English, circa 1920. Estimate: \$200-\$300



92 Nodding Cat Windup Mechanical Bank, Japan, circa 1960. The bank is 7" tall and made of tin. Estimate: \$150-\$200



93 Nodding Scotsman England, circa 1930. The bank is 7.5" tall. The bank is in pristine condition. Estimate: \$125-\$175



94 Animal Cruelty Prevention Alms Box This is an alms box for the Prevention of Cruelty to Animals in London. The bank is 10" long x 7.5" tall and made of wood. The bank is in fine condition. Heavy wear on the paper litho roof. Estimate: \$150-\$200



95 Home Bank, Tin The Home Bank was made in America, circa 1900's. The bank is 6.5" tall and made of tin. The bank is in very fine condition, some fading to the front of the bank. Estimate: \$75-\$125



96 Zentral Spar Kasse German, circa 1910. The bank is 7.5" tall and made out of sheet steel. The bank is in pristine condition. Estimate: \$100-\$150



97 Crescent Cash Register Crescent Cash Register was made by J. & E. Stevens of Connecticut, circa 1900's. The bank is 6.25" tall x 5" wide and made of cast iron. The bank is in poor condition. Estimate: \$175-\$225



98 Raegan Mechanical Bank Political Feud Between Ronald Raegan and Tip O'Neill Bank was made by Miley's Inc. of Ohio, circa 1980's. The bank is 9.5" tall and made of aluminum. The bank is in pristine condition. Estimate: \$100-\$150



99 National "Your Savings" Cash Register National "Your Savings" Cash Register, American, circa 1900's. The bank is 6.75" tall x 5" wide and made of cast iron. The Cash Register is in poor condition. Estimate: \$175-\$225



100 Panorama Panorama Mechanical Bank manufactured by J. & E. Stevens of Connecticut, circa 1880's. The bank is 6.5" tall and made of cast iron. The bank is repainted, the back left corner of the roof is broken out and is missing the picture wheel. (retains original trap) Estimate: \$300-\$500



101 Flying Saucer Bank Flying Saucer Bank was manufactured by Duro Mold of Detroit, circa 1950's. The bank is 3.75" tall. The bank is in good condition. Estimate: \$75-\$125



102 Chimpanzee Chimpanzee was manufactured in France, circa 1910. He is 5" tall and made of white metal. The bank is in fine condition. The metal rod that makes the jaw wobble has been replaced. The trap has a tear and has been soldered into place. Estimate: \$100-\$150



103 Two Mechanical Banks Bank of Education and Economy, American, circa 1890's. The bank is 3.5" tall and made of cast iron. The Bank of Education and Economy is in fine condition (glass is cracked and it is missing the paper slip insert). Hall's Lilliput manufactured by J. & E. Stevens of Connecticut, circa 1880's. The bank is 4.5" tall and made of cast iron. The bank is in excellent condition (missing figure and trap). Estimate: \$200-\$400



104 Speaking Dog Speaking Dog manufactured by J. & E. Stevens of Connecticut, circa 1880's. The bank is 7.5" long and made of cast iron. The bank has been repainted a long time ago! Estimate: \$150-\$250



105 Jolly N. Aluminum Jolly N. Aluminum, Austrian, circa 1950's. The bank is 6.25" tall. The bank is in fair condition. He is presently not working (eyes do not roll), missing his trap and original screws near his ears. (He has been soldered together.) Estimate: \$125-\$175



106 Treasure Chest Music Bank Treasure Chest Music Bank, unknown maker, circa 1930. The bank is 3.5" tall x 5" wide and made of white metal. The bank is in fine condition. (music plays) Estimate: \$200-\$400



107 Chandlers Bank Chandlers Bank, American, circa 1900's. The bank is 4.5" tall and made of sheet metal. The bank is in poor condition (some rusting). Estimate: \$250-\$300



108 Book of Knowledge U.S. and Spain The bank is in pristine condition (missing original plastic medallion). Estimate: \$100-\$150



109 Book of Knowledge Artillery Bank The bank is in pristine condition (missing original plastic medallion). Estimate: \$100-\$150



110 Book of Knowledge Punch and Judy Bank The bank is in pristine condition. Estimate: \$100-\$150



111 The Battle of Fort Sumter Mechanical Bank The Battle of Fort Sumter Mechanical Bank, Made in China. The bank is in near mint condition. Estimate: \$20-\$40



112 Book of Knowledge Dentist Bank The bank is in pristine condition. (Missing original plastic medallion.) Estimate: \$125-\$175



113 Book of Knowledge Indian and the Bear The bank is in pristine condition. (Missing original plastic medallion.) Estimate: \$125-\$175



114 Galloping Cowboy Bank Galloping Cowboy Bank, Japan, circa 1950. The bank is 7.5" tall and made of tin. The bank is in very fine condition. Estimate: \$150-\$250



115 Bureau Trick Drawer Bureau Trick Drawer, American, circa 1890's. The bank is 4.25" wide and made of wood. The bank is in fine condition. Estimate: \$75-\$100



116 Penny Saver Register Bank Penny Saver Register Bank, American, circa 1920's. The bank is 5.25" tall and made of iron. The bank is in fine condition. Estimate: \$200-\$300



117 Two Mechanical Banks Chad Valley Minstrel, England, circa 1930's. The bank is 5" tall and made of tin. Chad Valley Minstrel is in very fine condition (fading to front of bank). Monkey and Parrot manufactured by Saalheimer & Strauss of Germany, circa 1930's. The bank is 6" tall and made of tin. Monkey and Parrot is in very fine condition (blemish below parrot's head). Estimate: \$300-\$400



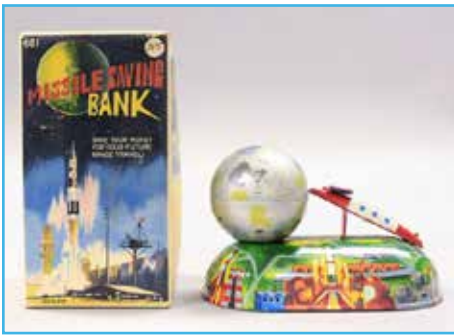
118 Galloping Cowboy Bank Galloping Cowboy Bank, Japan, circa 1950. The bank is 7.5" tall and made of tin. The bank is in excellent condition. Estimate: \$200-\$300



119 Flying Saucer Bank Flying Saucer Bank was manufactured by Duro Mold of Detroit, circa 1950's. The bank is 3.75" tall. The bank is in near mint condition. Estimate: \$75-\$125



120 Two Mechanical Banks Captain Kid Mystery Bank, unknown maker. The bank is 4" wide and made of tin. The bank is in fine condition (top of bank dented, the bank does not work). Get Rich Quick Cash Register, Marx Toys, circa 1950. The bank is 3.5" tall and made of tin. The bank is in very fine condition. Estimate: \$50-\$75



121 Missile Savings Bank Missile Savings Bank, Japan, circa 1950's. The bank is 4.5" tall and made of tin. The bank is in near mint condition with original box. Estimate: \$250-\$350



122 Fishing Bears Fishing Bears, Japan, circa 1950's. The bank is 7" square and made of tin. The bank is in excellent condition and retains two fish. (Baby bear is missing one ear.) Estimate: \$200-\$300



123 Sports Bank Sports Bank, made in China, circa 1980. The bank is 8" tall and made of white metal. The bank is in excellent condition. Estimate: \$75-\$125



124 Two Windmill Banks Cragstan Red Mill Bank made in Japan, circa 1950's. The bank is 5.5" tall and made of tin. The Cragston Red Mill Bank is in near mint condition with original box. The Szelmalom Persely Windmill Bank, Made in Hungary, circa 1950's. The bank is 4" tall and made of tin. The Szelmalom Persely Windmill Bank is in near mint condition with original box. Estimate: \$150-\$200



125 Two Tin Banks Included are: a TV Bank and a Registering Bank. They are both made of tin. The TV Bank is in fine condition (dent on top of bank). The registering bank is in fine condition. Estimate: \$100-\$150



126 The "Treasure Chest" Bank The "Treasure Chest" Bank was made in Japan, circa 1960. The bank is 10.5" tall and made of plastic. The bank is in excellent condition with original box. Estimate: \$100-\$150



127 Two Mechanical Banks The Hand From Uncle Bank was made in Japan, circa 1960. The bank is 3.25" tall and made of plastic. The Hand From Uncle Bank is in pristine condition with original box. The Sweathogs Action Bank was made in China, circa 1975. The bank is 4.5" tall and made of plastic. The Sweathogs Action Bank is in pristine condition with original box. Estimate: \$75-\$125



128 Two Mechanical Banks Presto Drawers Bank, American, circa 1950. The bank is 4.5" tall and made of plastic. The bank is in near mint condition with original box. The Brink's Armored Car was manufactured by Andy Grad Toys of Pennsylvania, circa 1960. The bank is 6.75" long and made of plastic. The bank is in very fine condition with original box. (Box with tears and other wear.) Estimate: \$100-\$150



129 Three Mechanical Banks Included are: a Japanese Temple Bank, Frankenstein Hand Bank and a Tomato Bank. They are all in pristine condition with their original boxes. Estimate: \$75-\$125



130 Two Mechanical Banks Clown Arched Top, England, circa 1930. The bank is in good condition. (Missing its trap) Clown Bank, Black Face, England, circa 1930's. The bank is in fine condition (tear on nose, minor repaint on the front of his shirt). Estimate: \$175-\$225



131 Popeye Knockout Bank Popeye Knockout Bank manufactured by Straits Mfg. of Detroit, circa 1930's. The bank is made of tin and in very fine condition. Estimate: \$200-\$300



132 Kick Inn Bank Kick Inn Bank manufactured by Presto Novelty Co. of St. Louis, circa 1920's. The bank is made of wood and is 9.5" long. The bank is in poor condition. (Part of the front of donkey is broken off and repainted, replaced ears, missing tail.) Estimate: \$100-\$150



133 Zentral Spar Kasse German, circa 1910. The bank is 7.5" tall and made out of sheet steel. The bank is in pristine plus condition. Estimate: \$200-\$300



134 Recording Bank Recording Bank, American, circa 1890's. The bank is 6.75" tall and made of cast iron. The bank is in pristine condition. Estimate: \$250-\$350



135 Little Joe Bank Little Joe Bank manufactured by John Harper of England, circa 1920's. The bank is 5" tall and made of cast iron. The bank is in fine condition. Estimate: \$200-\$300



136 Creedmoor Bank Creedmoor Bank manufactured by J. & E. Stevens, circa 1880. The bank is 10" long and made of cast iron. The bank is in fair condition. (Replaced screws.) Estimate: \$100-\$150



137 Hubley Elephant Elephant Howdah Pull Tail manufactured by Hubley of Pennsylvania, circa 1930's. The bank is 9" long and made of cast iron. The elephant's body is repainted. The rest of the bank is in excellent condition. Estimate: \$250-\$300



138 Frog on Round Base Frog on Round Base was manufactured by J. & E. Stevens of Connecticut, circa 1880's. The bank is 4" tall and made of cast iron. The bank is in very fine condition. Estimate: \$500-\$700



139 Presto Bank Presto Bank was manufactured by Kenton Hardware of Ohio, circa 1890's. The bank is 4.5" tall and made of cast iron. The bank is in very fine condition. Estimate: \$275-\$375



140 Organ Bank - Medium Organ Bank Medium was manufactured by Kyser & Rex of Pennsylvania, circa 1880's. The bank is 6" tall and made of cast iron. The bank is in very fine condition, (Missing the trap.) Estimate: \$350-\$550



141 Bill E. Grin Bill E. Grin manufactured by J. & E. Stevens of Connecticut, circa 1900's. The bank is 4.25" tall and made of cast iron. The bank is in fine condition; Some touch up. Estimate: \$400-\$600



142 Dog on Turntable Dog on Turntable manufactured by H. L. Judd Co. of Connecticut, circa 1890's. The bank is 4.75" tall and made of cast iron. The bank is in excellent condition. (Pretty green iron wash!) Estimate: \$550-\$750



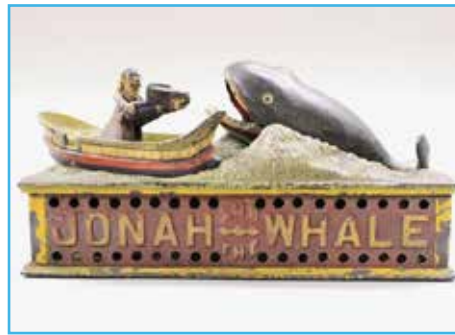
143 Owl Turns Head Owl Turns Head manufactured by J. & E. Stevens of Connecticut, circa 1880's. The bank is 7.5" tall and made of cast iron. The bank is in very fine condition. Estimate: \$400-\$600



144 Bull Dog, Coin on Nose Bull Dog Coin on Nose manufactured by J. & E. Stevens of Connecticut, circa 1880's. The bank is 7.5" tall and made of cast iron. The bank is in very fine condition. Estimate: \$800-\$1000



145 Trick Pony Bank Trick Pony Bank manufactured by Shepard Hardware of New York, circa 1880's. The bank is 7.75" tall and made of cast iron. The bank is in very fine condition. Estimate: \$2000-\$3000



146 Jonah and the Whale Jonah and the Whale manufactured by Shepard Hardware of New York, circa 1890's. The bank is 5.25" tall and made of cast iron. The bank is in fine condition. (Missing the trap.) Estimate: \$1200-\$1500



147 Tammany Bank Tammany Bank manufactured by J. & E. Stevens of Connecticut, circa 1880's. The bank is 5.75" tall and made of cast iron. The bank is in excellent condition. Estimate: \$450-\$650



148 Stump Speaker Bank Stump Speaker Bank was manufactured by Shepard Hardware of New York, circa 1880's. The bank is 9.75" tall and made of cast iron. The bank is in fine condition. Estimate: \$900-\$1200



149 Jolly N. Mechanical Bank Jolly N. Mechanical Bank was manufactured by Shepard Hardware of New York, circa 1890's. The bank is 6.5" tall and made of cast iron. The bank is in good condition. Estimate: \$350-\$450



150 Mule Entering Barn Mule Entering Barn was manufactured by J. & E. Stevens of Connecticut, circa 1880's. The bank is 5" tall and made of cast iron. The bank is in excellent condition. Estimate: \$1400-\$1800



151 Creedmoor Bank Creedmoor Bank was manufactured by J. & E. Stevens, circa 1880. The bank is 10" long and made of cast iron. The bank is in very fine condition. Estimate: \$400-\$600



152 Trick Dog Six Part Base Trick Dog Six Part Base was manufactured by Shepard Hardware, circa 1880's. The bank is 7.5" tall and made of cast iron. The bank is in good condition. Estimate: \$700-\$900



153 Teddy and the Bear Teddy and the Bear was manufactured by J. & E. Stevens of Connecticut, circa 1900's. The bank is made of cast iron. The bank is in pristine and bright condition. Estimate: \$2000-\$3000



154 Two Still Banks Included is a Prudential Rock, American, circa 1930's. Prudential Rock is 4" long. Also included is an elaborately decorated Tin Treasure Chest, circa 1900's. The Chest is 3.5" long. Both banks are in very fine condition. Estimate: \$75-\$100



155 Nickel Savings Bank Nickel Savings Bank, American, circa 1880's. The bank is 7" tall and made of cast iron. The bank is in poor condition. (Missing the coin trap in front.) Estimate: \$125-\$175



156 Two Sculptures Included are: a Windmill and a Girl with Parasol. The Windmill is 8.75" tall and made of wood. The Girl with Parasol is 7.25" tall and made of cast iron. Both are in pristine condition. Estimate: \$125-\$175



157 Two Still Banks Two Cottage with Porch Bungalow Banks, Grey Iron Casting, circa 1920's. The banks are 3.75" tall and made of cast iron. Both banks are in poor condition. The light green and white Bungalow Bank has significant rust. The dark green Bungalow Bank has a replaced trap. Estimate: \$150-\$200



158 Bean Pot Bean Pot Nickel Register, American, circa 1900's. The bank is 3" tall and made of cast iron. The bank is in fine condition. Estimate: \$175-\$225



159 Two Still Banks Included are two Shoe Still Banks, unknown maker, circa 1900's. They are 6" and 6.25" long. Both are made of lead. The banks are both in very fine condition. Estimate: \$75-\$125



160 Round Duck Round Duck, Kenton, circa 1930's. The bank is 4" tall and made of cast iron. The bank is a very well done repaint. Rare bank! Estimate: \$150-\$200



161 Trunk Bank Trunk Bank, American, circa 1890's. The bank is 3.5" long and made of cast iron. The bank is in excellent condition. Estimate: \$75-\$125



162 Domed Mosque Domed Mosque was manufactured by Grey Iron Casting Co., circa 1900's. The bank is 4.25" tall and made of cast iron. The bank is in poor condition. (Small crack is under bank.) Estimate: \$100-\$150



163 Two Still Banks Included are: One Car Garage and a Two Car Garage, A. C. Williams, circa 1925. Both banks are 2.5" tall and made of cast iron. Two Car Garage is in very fine condition while the One Car Garage is in fine condition. Estimate: \$150-\$200



164 Two Still Banks Included are: Victorian House Large and a Victorian House Small, J. & E. Stevens, circa 1890's. They are 4.5" and 3.25" respectively. Both are made of cast iron. They are in good condition. Estimate: \$100-\$150



165 Two Still Banks House with Porch, Large was manufactured by A. C. Williams of Ohio, circa 1915. The bank is 4" tall and made of cast iron. Domed Bank, Large was manufactured by A. C. Williams of Ohio, circa 1900. The bank is 4.75" tall and made of cast iron. Both banks are in fine condition. Estimate: \$100-\$150



166 Two Still Banks Skyscraper, 2nd Largest was manufactured by A. C. Williams of Ohio, circa 1910. The bank is 5.5" tall and made of cast iron. Caisse Bank, French, circa 1900. The bank is 6.25" tall and made of brass. Both banks are in very fine condition. Estimate: \$150-\$250



167 Villa Bank Villa Bank was manufactured by Kyser & Rex of Pennsylvania, circa 1890's. The bank is 5.75" tall and made of cast iron. The bank is in excellent condition. Estimate: \$350-\$550



168 Two Still Banks Tower Bank, John Harper of England, circa 1900. The bank is 9.25" tall and made of cast iron. Space Heater "Bird" Chamberlain & Hill, England, circa 1890's. The Tower Bank is in very fine condition. The Space Heater "Bird" is in fair condition (rusting). Estimate: \$350-\$450



169 Home Savings Bank with Dog Head Finial Home Savings Bank, J. & E. Stevens of Connecticut, circa 1890. The bank is 5.75" tall and made of cast iron. The bank is in excellent condition. Estimate: \$200-\$300



170 Independence Hall, Large Independence Hall, Enterprise Mfg., circa 1880's. The bank is 10" tall and made of cast iron. Rare Large Version. Possibly a very old repaint. Estimate: \$350-\$450



171 Two Still Banks Roper Stove, Arcade, circa 1920. The bank is 3.75" tall and cast iron. U. S. Mail (Hanging), A. C. Williams of Ohio, circa 1930. The bank is 5" tall and made of cast iron and tin. Both banks are in very fine condition. Estimate: \$150-\$200



172 Two Still Banks Two-Faced Black Boy - Small, A. C. Williams, circa 1910. The bank is 3.125" tall and made of cast iron. Cash Registering with Mesh, Arcade Toys, circa 1910. The bank is 3.5" tall and made of cast iron. The Two-Faced Black Boy is in fine condition, the Cash Register is in excellent condition. Estimate: \$175-\$225



173 Two Still Banks Dog "I Hear a Call", American, circa 1900. The bank is 8" long and made of cast iron. St. Bernard with Pack, A. C. Williams, circa 1910. The bank is 7.75" long and made of cast iron. Both banks are in very fine condition. Estimate: \$250-\$350



174 Four Still Banks Included: A Vault, TV, Music Cabinet and Mailbox. Various makers. All banks are made of tin and range from 4.25" tall to 7" tall. They range from good to very fine condition. Estimate: \$50-\$100



175 Telephone Bank Telephone Bank, Germany, circa 1940's. The bank is 5" tall and made of tin. (String with a cord.) The bank is in very fine condition. Estimate: \$100-\$150



176 Fireplace Bank Fireplace Bank, England, circa 1930's. The bank is 4.5" tall and made of tin. The bank is in very fine condition. Estimate: \$75-\$125



177 Singer Sewing Machine Singer Sewing Machine, Germany, circa 1925. The sewing machine stands 5.125" tall and is made of tin and iron. The bank is in very fine condition. Estimate: \$250-\$325



178 Three Still Banks Included are two Safe Banks and one Fire Alarm. Red Safe, Germany, circa 1920. Green Safe, England, circa 1930. Fire Alarm, Japan, circa 1950. They range in height from 3.5" to 6" tall and are all made of tin. The banks are in excellent condition. Estimate: \$150-\$200



179 Three Cylinder Banks The banks are American and English, circa 1930 - 1950. They are all in very fine condition. Estimate: \$50-\$100



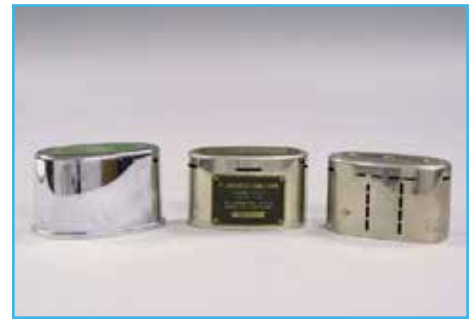
180 Three Still Banks Three post box banks. Made in England and China, circa 1900 / 1960. They range in condition from fine to very fine condition. Estimate: \$75-\$125



181 Three Still Banks Three cylinder banks, circa 1900 - 1930. They range from 2" to 3" tall and are all made of tin. They are in fine condition. Estimate: \$75-\$125



182 Hand Painted Cottage Bank Cottage Bank, circa 1900. The bank is 5.25" tall and made of tin. The bank is in very fine condition. (Clasp for lock is broken/missing.) Estimate: \$200-\$300



183 Three Registering Banks One for Halifax Building Society, The First National Bank and Central Office. They range from circa 1920's - 1930's. They are 2.25" tall and made of white metal. The banks are in fine condition. Estimate: \$40-\$60



184 Two Souvenir Banks Two Souvenir banks: one a St. Paul's Ev. Luth. Church, the other a German building. The Church is 6" tall and the German building is 3.25" tall. They are both in fine condition. The trap on the church has rust. The bottom of the German building is flaking. Estimate: \$150-\$200



185 Two Still Banks Two Tin Chests, one American and one French, circa 1900. The banks are 2.5" and 3.5" tall respectively. Both banks are made of tin. They are in poor condition. Estimate: \$40-\$60



186 Two Still Banks Israeli Money Saver and Columbian National Life, 1940s/60's. They are 4.25". Pristine condition. Estimate: \$50-\$75



187 Two Still Banks Edwardian Crown and Prussian Helmet, circa 1920. They are 3.25" to 3.75" tall and made of spelter. They are fine to excellent. Estimate: \$175-\$225



188 Three Tin Still Banks Included are two Cash Register and one School Bank, circa 1930. They are all 3" tall and made of tin. They are in very fine condition. Estimate: \$75-\$125



189 Two Still Banks Ivory Salt Elephant and Bilikin (Rare with writing), circa 1920. They are 4.25" and made of lead / cast iron. Bilikin very good. Elephant excellent. Estimate: \$150-\$250



190 Christmas Roast Pig Probably Ives of Connecticut, circa 1890. It is 7.5" long and made of cast iron. The bank is in fine condition. Estimate: \$175-\$225



191 Two Still Banks Mutt and Jeff and Young Negro, American / English, circa 1920. They are in fair to very good condition. Estimate: \$175-\$225



192 Birth Bank with Clock English, circa 1860. The bank is 7.5" tall and made of sheet steel and brass. The bank is in very good condition. Estimate: \$150-\$200



193 Telephone Bank Structo Toys, American, circa 1930's. The bank is 10.5" tall and made of sheet steel. The bank is in good condition. Estimate: \$75-\$125



194 Liberty Bell on Base American, circa 1926. The bank is 7.5" tall and made of lead with wood base. The bank is in excellent condition. Estimate: \$125-\$175



195 Three Still Banks Included are a Barrel, Alarm Clock and Idle Boy Drum, American, circa 1890 to 1930. They are 3" to 4" tall and made of tin. They are in very fine to excellent condition. Estimate: \$100-\$150



196 American Tin Bank Building American, circa 1880. The bank is 4.5" tall and made of tin. The bank is in good condition. (Base is reattached.) Estimate: \$100-\$150



197 Elastolin Monkey Atop Crate Elastolin, German, circa 1920. The bank is 4.75" tall and made of composition. The bank is in very fine condition. Estimate: \$175-\$225



198 Two Still Banks Included are an Elsie the Cow and Gen. MacArthur, American, circa 1940's. They are made of white metal and composition respectively. They are in excellent condition. Estimate: \$175-\$225



199 Key American, circa 1905. The bank is 8" tall and made of white metal. The bank is in fine condition. Estimate: \$50-\$100



200 Bugs Bunny at Barrel Manufactured by Moss Mfg., circa 1930. The bank is 5.5" tall and made of white metal. The bank is in excellent condition. Estimate: \$50-\$100



201 National Savings Bank American, circa 1930. The bank is 4.75" tall and made of white metal. The bank is in very fine condition. Estimate: \$75-\$125



202 Two Still Banks Included are a Small Reindeer and a Lion Tail Between Legs, circa 1915. The banks are 6" and 3" tall respectively. Both are made of cast iron. The banks are in very fine condition. (35% of lion is repainted.) Estimate: \$75-\$125



203 Elephant with Howdah, Large A. C. Williams, circa 1930. The bank is 5" tall and made of cast iron. The bank is in fine condition. Estimate: \$75-\$125



204 Spaniel Begging German, circa 1900. The bank is 4.5" tall and made of spelter. The bank is in very fine condition. (Hinge is broken.) Estimate: \$175-\$225



205 Bugs Bunny at Tree Trunk Manufactured by Moss Mfg., circa 1930. The bank is 5.5" tall and made of white metal. The bank is in excellent condition. Estimate: \$75-\$125



206 Mickey Mouse American 1970's. The bank is 9" tall and made of cast iron. The bank is in excellent condition. Estimate: \$25-\$50



207 Three Toy Vehicles Made by Barclay, circa 1930. They range from 2.75" to 3.75" long and are made of lead. They are in very fine condition. Estimate: \$60-\$90



208 Four Manoil Figures American, circa 1930. They are in very fine to excellent condition. Estimate: \$25-\$50



209 Three Windup Cars Two windup trucks and one car, Tri-Ang, circa 1930's. They are 3.25" long and made of tin. They are in excellent condition. (Red truck is missing one tire.) Estimate: \$150-\$250



210 Four Windup Cars Japanese, American and English, circa 1930's/40's. They range from 2.5" to 5" long and are made of tin. They are in very fine to pristine condition with 2 original boxes. Estimate: \$200-\$300



211 Three Windup Cars Occupied Japan, circa 1940's/50's. They range from 3.5" to 5" long and they are made of tin. The cars are in pristine condition with original boxes. (Some boxes with tears.) Estimate: \$200-\$300



212 Two Cars Occupied Japan, circa 1940's/50's. They range from 4" to 5" long and they are made out of tin/celluloid. They are in fine condition. (Celluloid head is dented.) Estimate: \$75-\$125



213 Two Windup Sedans Occupied Japan, circa 1940's/50's. They are both 5" long and made of tin. They are in very fine condition. Estimate: \$60-\$80



214 Two Tanks Occupied Japan, circa 1940's/50's. They are 3" long and made of tin. They are in pristine condition (one original box). Estimate: \$80-\$120



215 Two Cars Schuco Mfg. and U. S. Zone Germany, circa 1940's. They are 5.5" long and made of tin. The cars are in excellent condition. Estimate: \$200-\$300



216 Two Trucks Two red trucks, American, circa 1940's. They are 6.5" long and made of tin / slush cast. One is in very good condition and the other excellent. Estimate: \$60-\$80



217 Four Sedans Four Sedans, two American (are banks) and two Occupied Japan. They range from 5" to 6" and are made of tin. They range from very fine to excellent condition. Estimate: \$175-\$225



218 Two Racing Vehicles Race car by Marx, Racing Motorcycle made in Occupied Japan. They are both 5" long and made of tin. They are in excellent condition. Estimate: \$100-\$150



219 Saloon Car Louis Marx, circa 1930's. The car is 8.5" long and made of tin. Saloon car is in good condition. Estimate: \$50-\$100



220 Two Vehicles German, circa 1920's. The coupe is made by Bing. They range from 4.5" to 6.5" long and are made of tin. They are in good condition. Estimate: \$225-\$275



221 Over the Hill Toy The toy is made by Alps of Occupied Japan, circa 1940's. Pristine in original box. Estimate: \$150-\$250



222 Four Airplanes American, circa 1920's/30's. They are slush cast. The airplanes are in good condition. Estimate: \$75-\$125



223 Gyrocopter and Rollover Plane American / Japanese, circa 1930's/40's. They have a 5" to 5.5" wingspan and both are made of tin. They are in fine to excellent condition. Estimate: \$75-\$125



224 Two Marx Airplanes Louis Marx, circa 1930's/40's. They have a 7" to 8" wingspan and are made of tin. They are in very fine condition. Estimate: \$150-\$200



225 Two Alligators German, circa 1930's/40's. They are 6.5" to 8" long. They are in excellent condition. Estimate: \$75-\$125



226 Two Windup Bird Toys Japanese, circa 1940's. They are 3.5" and 4.25" tall and made of tin. Excellent condition. (One not working.) Estimate: \$50-\$75



227 Two Windup Ducks The Duck who lays eggs is made by Marx, the other is rare and made in Great Britain. They are both in very fine condition. Estimate: \$225-\$275



228 Jumping Parrot Occupied Japan, circa 1950's. The parrot is 5" tall and made of tin. He is in pristine condition in its original box. Estimate: \$60-\$80



229 Three Novelty Toys Three Novelty Toys, German/Japanese, circa 1940's. They are 2" to 4" tall and made of tin. They are in excellent condition (2 original boxes) Estimate: \$75-\$125



230 Two Toys Kangaroo and Walking Pig, Occupied Japan, circa 1940's. They are 3.5" to 4.5" tall and made of tin. They are in pristine condition. (Pig box is missing 1 flap.) Estimate: \$75-\$125



231 Two Toys Japanese, circa 1950's. The birds are 7" to 7.5" long and made of tin (bird's legs are plastic). They are in very fine condition. (Bird has one toe broken and missing.) Estimate: \$75-\$125



232 Two Animal Toys Occupied Japan, circa 1952. They are 4" to 5" long and made of tin (simulated fur). They are in pristine condition. (Original boxes with dents or tears.) Estimate: \$60-\$80



233 Monkey with Banjo Occupied Japan, circa 1940's. He is 4" tall and made of tin/fabric. He is in excellent condition with original box. Estimate: \$60-\$80



234 Windup Toys Occupied Japan / Japan, circa 1950's/60's. They are 3.25" to 6" long and made of tin. They are in excellent condition. Estimate: \$75-\$125



235 Two Windup Toys German / Japanese, circa 1930's/40's. They are 5" to 5.5" long and made of tin. They are in excellent condition. Estimate: \$100-\$150



236 Cowboy on Horseback German, circa 1930's. The toy is 5.5" long and made of tin. The Cowboy on Horseback is in fine condition. (Needs a clean.) Estimate: \$125-\$175



237 Ride'em Cowboy Manufactured by Wyandotte of Pennsylvania, circa 1950's. The toy is 6.5" long and made of tin. The toy is in excellent condition. Estimate: \$125-\$175



238 Knife Sharpener German, circa 1930's. The toy is 4.75" tall and made of tin/flint. The toy is in fine condition. Estimate: \$60-\$90



239 Monkey Drummer with Cymbals Japanese, circa 1950's. He is 7" tall and made of tin. The Drummer is in very fine condition. Estimate: \$50-\$75



240 Drumming Soldier Made by Louis Marx Co. of New York, circa 1930's. He is 9.25" tall and made of tin. The bank is in very fine condition. Estimate: \$75-\$125



241 Drummer Boys Manufactured by J. Chein of New Jersey, circa 1930's. Both are about 8.75" tall and made of tin. The banks are in very fine condition. (One is missing drum sticks.) Estimate: \$75-\$125



242 George the Drummer Boy Manufactured by Louis Marx of New York, circa 1930's. The toy is 9.25" tall and made of tin. The toy is in excellent condition. Estimate: \$125-\$175



243 Clown One Man Band Japanese, circa 1955. The toy is 10" tall and made of tin/fabric. He is in excellent condition. Estimate: \$100-\$150



244 Hula Hooping Girl Japanese, circa 1950's. She is 9" tall and made of tin. Estimate: \$60-\$80



245 Drum Major Manufactured by Wolverine Supply Co. of Pennsylvania, circa 1935. He is 13.5" tall and made of tin. He is in very good condition. Estimate: \$125-\$175



246 Two Comic Cars Occupied Japan, One called "Groggy" and one called "Cowboy", circa 1950. They are 4.5" long and made of tin. One fine, one excellent. Estimate: \$100-\$150



247 Cowboy Car (Hard Plastic) Louis Marx Co. of New York, circa 1955. It is 5.5" long and in excellent condition. Estimate: \$100-\$150



248 Leaping Lena and Old Jalopy Louis Marx, circa 1930/1950. The toys are 6.5" and both are made out of tin. They are both in fine condition. Estimate: \$175-\$250



249 Leaping Lena Made by Ferdinand Strauss, circa 1925. The toy is 8" long and made of tin. The toy is in very fine condition. Estimate: \$175-\$250



250 Joy Rider Louis Marx, circa 1930. The toy is 8" long and made of tin. The toy is in very fine condition. Estimate: \$175-\$225



251 Whoopee Car Louis Marx, circa 1930. The toy is 9" long and made of tin. The toy is in fine condition. Estimate: \$150-\$200



252 Two Toys Included: Kampus Car and Station Wagon. Louis Marx, circa 1950's. They are both 6" long and made of tin. The toys are in very fine to pristine condition. Estimate: \$100-\$150



253 Two Mickey Mouse Cars Louis Marx, circa 1950's. They are 6" to 6.75" long and made out of tin/plastic. They are in excellent condition. (Plastic parts are in fine condition.) Estimate: \$125-\$175



254 Tank Louis Marx Co. of New York, circa 1925. The toy is 10" long and made of tin. The toy is in very good condition. Estimate: \$80-\$120



255 Amos & Andy "Fresh Air" Taxi Louis Marx of New York, circa 1925. The toy is 8" long and made of tin. It is in fine condition. Estimate: \$250-\$325



256 Two Rail Yard Favorites One made in Japan is a 5.5" long hand car, the other made in U. S. Zone Germany is 6" electric luggage transport. They are both made of tin and are in excellent condition. Estimate: \$125-\$175



257 Honeymoon Express Made by Louis Marx of New York, circa 1930. The bank is made of tin and in very fine condition. Estimate: \$125-\$175



258 Double Billiards Players - Large Wolverine Toy Co. of Pennsylvania, circa 1940's. The toy is 14" long and made of tin. Pristine condition. (Lacks billiard ball.) Estimate: \$150-\$200



259 Bombo the Monkey Unique Art Co. of New Jersey, circa 1930's. It is 9.5" tall and made of tin. Excellent plus condition. Estimate: \$100-\$150



260 Felix the Cat Walker Probably made by Guntermann of Germany, circa 1920. He is 6.25" tall and made of tin. Very good condition. Estimate: \$225-\$275



261 Two Windup Toys Two Occupied Japan windup toys. A Skating Hobo and a Monkey with Chairs. They are 4.5" to 5" tall made of tin. They are in fine to very fine condition. Estimate: \$75-\$125



262 Busy Lizzie Germany, circa 1930's. She is 7.5" tall and made of tin. Very fine condition. Estimate: \$150-\$200



263 German Go Round Probably by J. Meier of Germany. The toy is 6" tall and made of tin. Fair condition. Estimate: \$75-\$125



264 Cat Chasing Mouse Germany, circa 1935. The toy is 9" long and made of tin. Very fine condition. (Missing one eye and one ear.) Estimate: \$50-\$100



265 The Dance Germany, circa 1890. This fantastic toy is hand cranked. Sadly it is missing one of the dancing couples and the fiddler lacks his right arm. The toy has a 7" diameter and is made of tin. Very good paint condition. Estimate: \$350-\$550



266 Ostrich Cart Occupied Japan, circa 1940's. The toy is 6" long and made of tin/plastic legs. Very fine condition. Estimate: \$75-\$125



267 Donkey Cart Ferdinand Strauss, circa 1925. The toy is 9.5" long and made of tin. Fine condition. (Donkey is missing front legs.) Estimate: \$60-\$80



268 Charleston Trio Louis Marx, circa 1925. The toy is 10" tall and made of tin. Very fine condition. (Man is missing arms and banjo.) Estimate: \$100-\$150



269 Two Bubbling Toys One a Baby and one a Drunk. Japan, circa 1930's. They are 2.5" to 3" tall and made of celluloid/glass. They are excellent with original boxes. Estimate: \$75-\$100



270 Two Celluloid Toys Japanese, circa 1930's. They are 4.5" to 5.5" tall and made of celluloid. Fine condition. Estimate: \$75-\$125



271 Three Celluloid Toys Japanese, circa 1930's. They are 5.5" to 6" tall and made of celluloid. Very good to fine condition. (One with original box.) Estimate: \$80-\$120



272 Two Windup Toys Japanese, circa 1940's. They are 3.5" to 4" long and made of celluloid. Fine condition. Estimate: \$40-\$60



273 Three Celluloid Toys Japanese, circa 1930's. They are 4.5" to 5.75" tall and made of celluloid. Very fine condition. Estimate: \$100-\$150



274 Two Dog Toys Japanese, circa 1950's/60's. They are about 6" long and made of tin/felt. Excellent condition with original boxes. Estimate: \$50-\$100



275 Two Celluloid Toys Japanese, circa 1940's. They are 5" and 8" long respectively. Very fine to pristine. (One original box.) Estimate: \$100-\$150



276 Two Celluloid Toys Japanese, circa 1940's. They are 8" and 8.5" tall respectively. Both excellent. Estimate: \$125-\$175



277 "Swimmer" Toy Japanese, circa 1950's. The swimmer is 5.5" long and made of celluloid. Pristine in original box. Estimate: \$60-\$90



278 Clown Riding Donkey Japanese, circa 1930's. The toy is 6.5" long and made of celluloid. The toy is in very fine condition. (Donkeys ears are a little loose.) Estimate: \$100-\$150



279 Two Dog Themed Toys Japanese, circa 1950's. The toys are 4.5" long and made of celluloid. Very fine condition. Estimate: \$75-\$125



280 Hollywood and Vine Japanese, circa 1940's. The toy is 8.5" tall and made of celluloid. Fine condition. (Coat soiled.) Estimate: \$80-\$120



281 Two Boxed Toys Japanese, circa 1950's/60's. They are 4.5" and 7.5" respectively, one is tin and one is celluloid. Excellent condition with original boxes. Estimate: \$125-\$175



282 Two Summersaulting Toys One is a Boy Scout and one is a Sailor. Japanese, circa 1940's. They are 7.5" and 8.5" tall respectively and made of celluloid/steel. Excellent condition. Estimate: \$150-\$225



283 Roaring Lion Occupied Japan, circa 1940's. The toy is 6" long and made of tin/felt. Excellent condition with original box. Estimate: \$60-\$80



284 Two Celluloid Toys Japanese, circa 1950's. They are 9" to 10" tall and made of celluloid. Very fine. (One with original box.) Estimate: \$100-\$150



285 Three Toys Japanese, circa 1940's/50's. They are 5" to 7" long and made of tin or celluloid. Very fine to pristine. Estimate: \$150-\$200



286 Two Sledding Toys Japanese, circa 1950. They are 3.5" long and made of tin/celluloid. Very fine condition. Estimate: \$50-\$75



287 Two Skiing Toys U. S. Zone Germany, circa 1948. They are 5.5" long and made of tin. Excellent plus condition. Estimate: \$80-\$120



288 Two Walking Toys One is a Pirate, and one is a Peace Corps Man. Japanese, circa 1960's. They are 6.5" tall and made of tin. Excellent condition. Estimate: \$100-\$150



289 Two Schuco Clown Musicians Schuco, circa 1930's. They are 4.5" tall and made of felt/tin. Fine condition. (One is missing violin.) Estimate: \$100-\$150



290 Two Monkey Violinists Schuco, circa 1930's. They are 4.5" tall and made of felt/tin. Very fine condition. (One is missing his cap.) Estimate: \$125-\$175



291 Father and Daughter Mice Schuco, circa 1930's. The toy is 4.5" tall and made of felt/tin. Very fine. Estimate: \$75-\$125



292 Busy Mike Sand Toy J. Chein, circa 1940's. The toy is 9.5" tall and made of tin. Pristine condition. Estimate: \$80-\$120



293 Two Turtle Windup Toys One is German, circa 1920. He is 7" long and made of composition/wood/metal. The other is Occupied Japan, circa 1940. He is 6" long and made of celluloid/tin. They are in very fine to excellent condition. Estimate: \$100-\$150



294 Two Toys Japanese, circa 1940's. The clown is 5.25" tall and the Surprise Radio is 5" wide. Both are made of tin. They are in very fine condition with original boxes. Estimate: \$80-\$120



295 Buttercup Toy Germany, circa 1915. The toy spins around when wound. The toy is 6.75" tall and made of tin. Good condition. Estimate: \$250-\$350



296 Two Windup Toys Occupied Japan, circa 1940's. One is a Rotund Cat and one a Smiling Boy. They are 5.5" and 6.5" tall respectively and made of tin/plastic. Excellent plus condition. Estimate: \$200-\$300



297 Two Windup Toys Bellhop Monkey by Louis Marx, "Ridem Cowboy" made in Occupied Japan. They are 4" to 5" tall and made of tin. Excellent condition. (Both have original boxes.) Estimate: \$100-\$150



298 Colonial Soldier on Horseback Germany, circa 1930's. The toy is 6.5" long and made of tin. Very fine condition. Estimate: \$175-\$225



299 Two Windup Toys Occupied Japan, circa 1940's. They are 4" long and made of tin. Very fine condition. Estimate: \$80-\$120



300 Three Animal Toys Penguin, Pig and a Pelican. Occupied Japan, circa 1950. They are 3" to 3.5" tall or long and made of tin. Pristine condition. Estimate: \$100-\$150



301 Three Rabbit Toys Occupied Japan, circa 1950. They are 2.5" to 4.5" long and made of tin. They are in excellent condition. Estimate: \$80-\$120



302 Painted Windup Bird Germany, circa 1920. The toy is 8" long and made of tin. Fair condition. Estimate: \$100-\$150



303 Windup Beetle Toy Germany, circa 1930. The toy is 5.25" long and made of tin. Excellent condition. Estimate: \$100-\$150



304 Frog on Cycle Germany, circa 1920. The toy is 5.5" tall and made of tin. Good condition. Estimate: \$300-\$400



305 Two Windup Dogs Japanese, circa 1950's. They are 3.25" / 4.75" long and made of tin. They are in excellent condition with one original box. Estimate: \$75-\$125



306 Two Windup Toys Occupied Japan, circa 1940's. They are 4.5" and 5" long respectively. Made of tin. Excellent condition. Estimate: \$100-\$150



307 Candy Loving Canine in Box Japan, circa 1955. He is made of tin. It is mint in the original box. Estimate: \$50-\$75



308 Toddler Riding Pelican Occupied Japan, circa 1940's. The toy is 6" long and made of tin/celluloid. Very fine condition. Estimate: \$60-\$90



309 Two Celluloid Toys Japan, circa 1950. One is a Santa Sleigh that is 8.5" long. The other is a boy in cart that is 5" long. They are made of tin/celluloid. Very fine condition. Estimate: \$80-\$120



310 Boy in Rowboat Japan, circa 1950's. The toy is 7.5" long and made of tin. Very fine condition. Estimate: \$50-\$75



311 Two Celluloid Toys Japan, circa 1948. One is a young Mexican with Sombrero that is 5.75" long and the other is a Native American that is 7.75" long. Both are made of celluloid. Very fine condition. Estimate: \$100-\$150



312 "Knock Out" Prize Fighters Made by Ferdinan Strauss of New York, circa 1930. The toy is 6" long and made of tin. Fine condition. (Ring needs restringing.) Estimate: \$125-\$175



313 Two Windup Toys One is a Policeman by J. Chein and is 5.5" tall. The other is a Walking Porter with Suitcase and is 4" tall. Both made circa 1950. They are made of tin/celluloid. They are in fine to excellent condition. Estimate: \$75-\$125



314 Two Natives on Alligators Occupied Japan, circa 1950. They are 11" long and made of celluloid. Very good condition. (One is missing the native's hand.) Estimate: \$40-\$60



315 Xylophone Player with Box Japan, circa 1950. It is 5" tall and made of tin/celluloid. Excellent with original box. Estimate: \$50-\$75



316 Two Celluloid Toys Both made in Occupied Japan, circa 1940's. One is a Clown Pulling Donkeys Tail that is 7.5" long. The other is Mary and Her Lamb that is 6" long. Both made of celluloid. Very fine condition. (Mary is missing an umbrella.) Estimate: \$100-\$150



317 Celluloid Horses with Jockeys Occupied Japan, circa 1940's. The toy is 6" long and made of tin/celluloid. Very fine condition. Estimate: \$60-\$90



318 Boy Gymnast Occupied Japan, circa 1940's. The toy is 6.5" tall and made of tin/steel frame. Very fine condition. Estimate: \$80-\$120



319 Pluto Gyroscopic Toy Made in America, circa 1939. The toy is 9" long and made of tin. Very fine condition. Estimate: \$80-\$120



320 Boy Riding a Sled Probably German, circa the late 1930's. It is 7" long and made of tin/felt. Excellent condition. Estimate: \$100-\$150



321 Two Celluloid Toys Japan, circa 1950's. One is a young Japanese Woman with her Baby and is 4.5" tall. The other is a Toddler that is 6" tall. Both are made of celluloid. Very fine to excellent condition. (One with original box.) Estimate: \$80-\$120



322 Horse & Jockey Made in Germany, circa 1935. The toy is 5" long and made of tin. Very fine condition. Estimate: \$100-\$150



323 Roaring Lion Occupied Japan, circa 1950. It is 5.5" long and made of tin/felt. The toy is virtually mint in its original box. Estimate: \$60-\$90



324 Bird Cage Made in Japan, circa 1950. The toy is 8.5" tall and made of tin/celluloid/plastic. Excellent condition. (Missing tiny part of cage.) Estimate: \$100-\$150



325 Three Celluloid Toys Occupied Japan or Japan, circa 1940's/50's. They are 5.5" to 6" tall and made of celluloid/tin. Very good to very fine condition. Estimate: \$75-\$125



326 Two Racing Vehicles One probably French, circa 1930's is 4.5" long and a rollover car. The other is made in Occupied Japan and is 4.25" long. They are both made of tin. Excellent condition. Estimate: \$125-\$175



327 Flatbed Friction Toy with Merry Go Round Japan, circa 1955. The toy is 8.25" and made of tin. Excellent condition. Estimate: \$60-\$90



328 Mickey & Minnie Mouse Handcar Made by the Lionel Corporation of New York. The toy is 9" long and made of tin/composition. Good condition. (Minnie's legs are broken but present.) Estimate: \$100-\$150



329 Drummer Boy Made in America. The toy is 7" tall and is made of tin. Very fine condition. Estimate: \$60-\$90



330 Bumper Car American, circa 1930's. The toy is 9.5" long and made of tin/sheet steel. Fine condition. Estimate: \$150-\$200



331 Three Person go Round Buffalo Toys, circa 1930. The toy is 14" tall and made of tin. Very fine condition. Estimate: \$225-\$275



332 Two Celluloid Toys Occupied Japan, circa 1950. Sweeping Girl is 7.5" tall, Animal Fantasy Toy is 7" tall. Fine to very fine. Estimate: \$80-\$120



333 Two Soldier Toys Japan, circa late 1950's. They are 6" tall and 8" long respectively. One is made of celluloid and the other tin. Pristine with original boxes. Estimate: \$120-\$150



334 Three Animal Themed Toys Included are a Walking Giraffe, Wandering Chimpanzee and a Rabbit. Japan, late 1950's. They range from 4" to 6.5" tall or long. They are made of tin. Pristine with boxes. Estimate: \$125-\$175



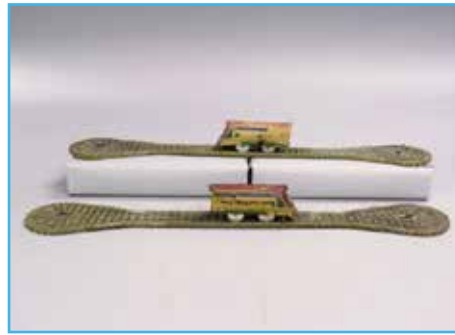
335 Three Kitty Toys Made in Japan, circa late 1950's. They are 5" to 6" long and made of tin/simulated fur. Pristine condition with boxes. Estimate: \$75-\$125



336 Two Bird Themed Toys One is a Swan made in Occupied Japan, circa 1950 and is 5.25" long. The other a Happy Hen made in New York, circa 1935 and is 5.5" long. They are both made of tin. Pristine with original boxes. Estimate: \$100-\$150



337 Mickey & Minnie Mouse Acrobats Made in Japan, circa 1938. The toy is 10" tall and made of celluloid/steel. Fair condition. (Celluloid with some dents.) Estimate: \$150-\$200



338 Two Train Turnaround Toys Unknown maker, circa 1940's. They are 17" long and made of tin. Fair condition. Estimate: \$50-\$75



339 Two Train Turnaround Toys One is German, and one is Japanese, circa 1950's/60's. They are both 15" long and made of tin. Very fine or better condition. (One with original box.) Estimate: \$50-\$100



340 Over and Under Toy Made by Wolverine, circa 1930's. The toy is made of tin. Pristine with original box. Estimate: \$125-\$175

Next Auction
November 12, 2016
Always accepting
quality consignments.

OLD TOY SOLDIER



Next issue November 2016
 oldtoysoldier.com



Ray Haradin
 Toys of Yesteryear
 raytoys.com

OLD TOY SOLDIER



AUCTIONS USA

Investment Rarities 2016
 October 8th, 2016
 oldtoysoldierauctions.com



Keystone Toys
 November 12th, 2016
 Cyber Toy Auctions
 facebook.com/cybertoyauctions

Follow us!



Next sale October 14th and 15th, 2016
 Spectacular Stills.
 The Ralph Dye, Tom Kellogg and
 Tim Steckbeck Collections
 rslauctions.com



Terms and Conditions



1. Cyber Toy Auctions acts as an agent for the seller. The contract for the sale of the property is between the seller and the buyer. No statements made within this catalog or made by a representative of or employee of Cyber Toy Auctions shall be deemed to be a warranty, representation, or assumption of liability with respect to the property's age, condition, size, quality, variety, importance, provenance, or historical relevance. All property is sold "as is".

2. All sales are final.

3. Buyers are responsible for satisfying themselves concerning the condition of the property.

4. The auctioneer will be solely responsible for determining the bidding increments.

5. The auctioneer will be the final judge in deciding which bidder has won an item. In the event of a dispute, the auctioneer at his discretion, shall decide whether to reopen bidding or not.

6. To provide Cyber Toy Auction's Customers with an exciting and rewarding auction experience we guarantee the items are as described. If an error was made you will be refunded fully upon the return of the lot. You MUST contact Cyber Toy Auctions within 7 days of receiving the item in order to receive a refund. After 7 days the items are sold "AS IS" and are NOT RETURNABLE. Items must be paid for within 30 days of sale.

7. In order to bid, you must first register on LiveAuctioneer's website. Cyber Toy Auctions reserves the right, in our sole discretion, to refuse your registration or participation in the auction or to revoke your permission to participate before, during or after the sale.

8. Submit all questions regarding upcoming auction items at least 48 hours prior to the date of auction. We will make every effort to answer all submitted questions in a timely manner. However, we cannot guarantee that questions submitted within 48 hours of the auction date will be answered prior to the auction.

9. By bidding online, by written bid, telephone or other means, the buyer indicates acceptance of these Terms and Conditions.

10. Absentee Bids: Cyber Toy Auctions are authorized to execute bids on your behalf. Complete an Absentee Bid Form and return to Cyber Toy Auctions BEFORE the absentee bid deadline. We cannot accept "Buy" bids. In the event that two identical bids are received, the first bid form received by Cyber Toy Auctions will have preference.

11. As soon as you place and confirm your bid amount, your bid is submitted. You accept and agree that bids submitted by you are final. Neither Cyber Toy Auctions nor the

Consignor is responsible for any errors in bidding. We reserve the right to reject any bid. The highest bidder acknowledged by the Cyber Toy Auctions will be the purchaser. Cyber Toy Auctions has absolute and sole discretion in the case of error or dispute with respect to bidding, and whether during or after the sale, to determine the successful bidder, to re-open the bidding, to cancel the sale or to re-offer and re-sell the item in dispute. If any dispute arises after the sale, our sale record is conclusive. By participating in the sale, you represent and warrant that any bids placed by you, or on your behalf, are not the product of any collusive or other anti-competitive agreement and are otherwise consistent with federal and state antitrust law.

12. The buyer is required to pay Pennsylvania sales tax 7% unless exemption is allowed under the laws regulating such tax. Dealers must present a valid tax ID certificate in order to qualify for exemption.

13. All accounts are to be settled within 15 days of the end of the sale.

14. Payment may be made by cash, personal check, credit card or PayPal. A 23% buyer's premium will be added to all successful bids. A 3% discount will be applied for payment made by cash or personal check making the buyer's premium 20%, if paid within 15 days. Discount only applied to payment made within this time frame. An additional 3% will be added to bids made through LiveAuctioneers. Cyber Toy Auctions reserve the right to hold all merchandise paid by check until payment has been cleared by the bank. This may take up to one month.

15. There will be a \$50 charge added to all wire transfers.

16. In the event property is not paid for in full, Cyber Toy Auctions may pursue one or more of the following rights or remedies. A) charge interest at 2% per month of the unpaid balance. B) hold the defaulting buyer liable for the total amount due and commence legal proceedings for its recovery together with interest, legal fees and costs to the fullest extent permitted under applicable law. C) Cancel the sale D) resell the property E) pay the seller the amount up to the net proceeds payable in respect to the amount bid by the default buyer minus one bid. F) Or to take such other action as we deem necessary or appropriate.

17. Shipping may be arranged through Cyber Toy Auctions for a fee of \$12 per lot. International and large items will incur additional costs. Shipped items may take up to 45 days to be delivered.

18. Cyber Toy Auctions has the capability to ship to international bidders. By law, Cyber Toy Auctions cannot, and will not, declare lesser values for any international purchases and all shipments will include the invoice with purchase totals including the buyer's

premium and shipping cost. All international bidders are responsible for knowing their country's laws on importing items and for paying all customs and duties on the items.

19. Cyber Toy Auctions are not responsible for any typographical errors or omissions in this catalog or price key. Photographs in this catalog are of the actual objects being sold but are not shown to scale.

20. Cyber Toy Auctions reserves the right to withdraw any property before, during and after the sale and shall have no liability whatsoever for such withdrawal.

21. In no event will our liability to a purchaser exceed the purchase price actually paid. Cyber Toy Auctions will not be responsible for any errors or failures to execute bids placed online or for any errors or omissions in connection therewith including, without limitation, errors or failures caused by (i) a loss of connection to the internet or the LiveAuctioneer's Online Platform software by either Cyber Toy Auctions or the client; (ii) a breakdown or problem with Cyber Toy Auction's or LiveAuctioneer's Online Platform software; or (iii) a breakdown or problem with a client's Internet connection, mobile network or computer.

22. Cyber Toy Auction's content on LiveAuctioneer's Online Platform ("Web Site" or "Platform") is published and maintained by LiveAuctioneers. If you are a registered user of LiveAuctioneers, the LiveAuctioneer's Privacy Policy governs your agreement with LiveAuctioneers with respect to LiveAuctioneer's collection, use, storage, and disclosure of your personal information. Cyber Toy Auctions does not control and is not responsible for the information and privacy practices of LiveAuctioneers on the LiveAuctioneer's Web site, which is operated entirely by LiveAuctioneers. You agree that Cyber Toy Auctions and its affiliates will not be responsible for, and that you release Cyber Toy Auctions and its affiliates from, any and all claims, liabilities, damages, losses and expenses related to unauthorized access to or use of, or any security breach relating to or affecting, LiveAuctioneer's collection, use, storage, and disclosure of your personal information.

23. All rights reserved. Entire contents Copyright 2016. Cyber Toy Auctions Copyright includes, but not limited to, print, media, microfilm and electronic media, such as CD-ROM's and online computer services.

24. The rights and obligations with respect to the Terms and Conditions shall be governed by the laws of the state of Pennsylvania.

25. If any part of these Terms and Conditions are found by any court to be invalid, illegal or unenforceable, that part shall be discounted and the rest of the conditions shall continue to be valid to the fullest extent permitted by law.

